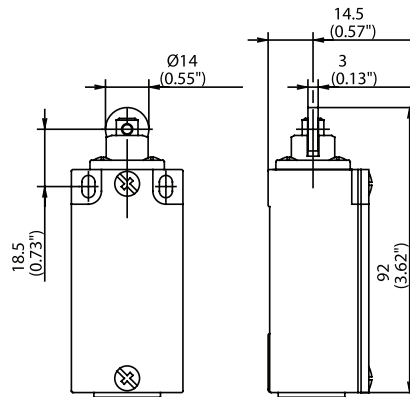


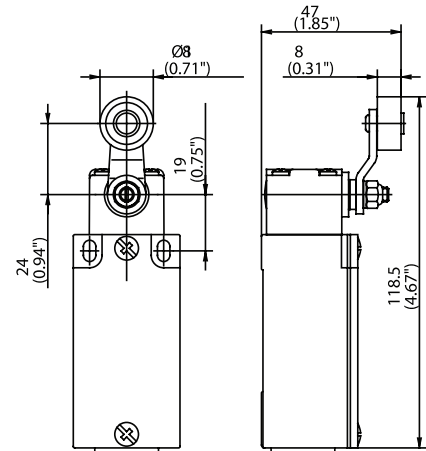
GC Series



RIW



AH

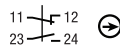


Switching Operation

1 NC / 1 NO Contacts

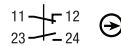
Slow Action

602.1117.029
GC-U1Z RIW



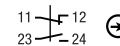
Snap Action

602.1367.626
GC-SU1Z RIW



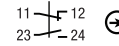
Slow Action

602.1135.102
GC-U1Z AH



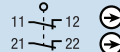
Snap Action

602.1385.634
GC-SU1Z AH



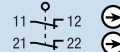
2 NC Contacts

602.1817.172
GC-A2Z RIW



-
-

612.1835.833
GC-A2Z AHS



-
-

2 NO Contacts

602.1817.154
GC-E2 RIW



-
-

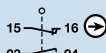
602.1835.160
GC-E2 AH



-
-

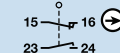
1 NC / 1 NO Contacts Overlapping

602.1317.030
GC-UV1Z RIW



-
-

602.1335.133
GC-UV1Z AH



-
-

Replacement actuator:

391.2170.518

391.2350.722

Technical Information

	Slow Action	Snap Action
Maximum Switching Voltage	240V	240V
Max. Switching Amps (up to)*	10A	10A
B10d (up to)*	20 Million	20 Million
Mechanical Service Life (up to)*	3 x 10 ⁶	10 x 10 ⁶
Switching Frequency	≤ 100/min	≤ 100/min
Operating Temperature	-30 °C to +80 °C	-30 °C to +80 °C
Protection Rating	IP65	IP65
Utilization Category (up to)*	AC-15, Ue/Ue 240V 3A	AC-15, Ue/Ue 240V 3A
Rate Insulation Voltage	400VAC	400VAC

Approvals

* Depending on switching system - see technical information for details



	Slow Action	Snap Action
Maximum Switching Voltage	240V	240V
Max. Switching Amps (up to)*	10A	10A
B10d (up to)*	20 Million	20 Million
Mechanical Service Life (up to)*	10 x 10 ⁶	10 x 10 ⁶
Switching Frequency	≤ 100/min	≤ 100/min
Operating Temperature	-30 °C to +80 °C	-30 °C to +80 °C
Protection Rating	IP65	IP65
Utilization Category (up to)*	AC-15, Ue/Ue 240V 3A	AC-15, Ue/Ue 240V 3A
Rate Insulation Voltage	400VAC	400VAC



Special features/variants (on request)

- Available for high temperature range and following contacts:
2 NC / 1 NO contact (larger enclosure)
2 NC / 2 NO contact (larger enclosure)

Special features/variants (on request)

- Available with different roller diameters, bent or straight lever and with different lever lengths

Drawing dimensions in mm

Mouser Electronics

Authorized Distributor

Click to View Pricing, Inventory, Delivery & Lifecycle Information:

[Altech:](#)

[602.1817.172](#) [602.1385.634](#) [602.1135.102](#) [602.1367.626](#) [602.1335.133](#) [602.1117.029](#) [602.1317.030](#)