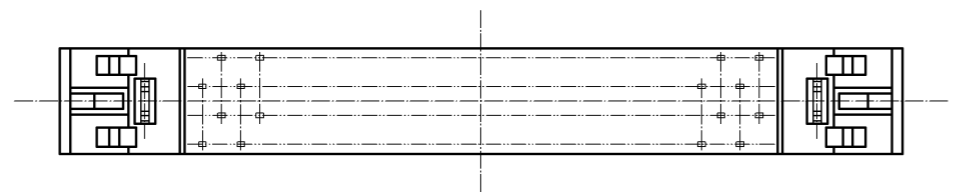
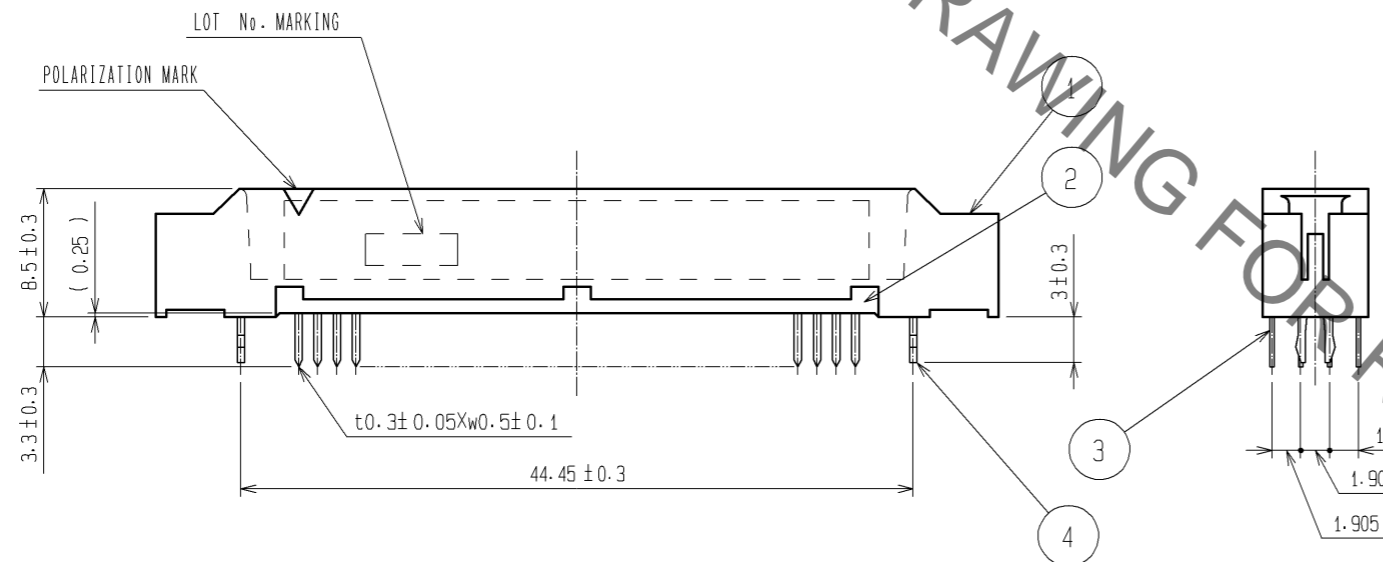
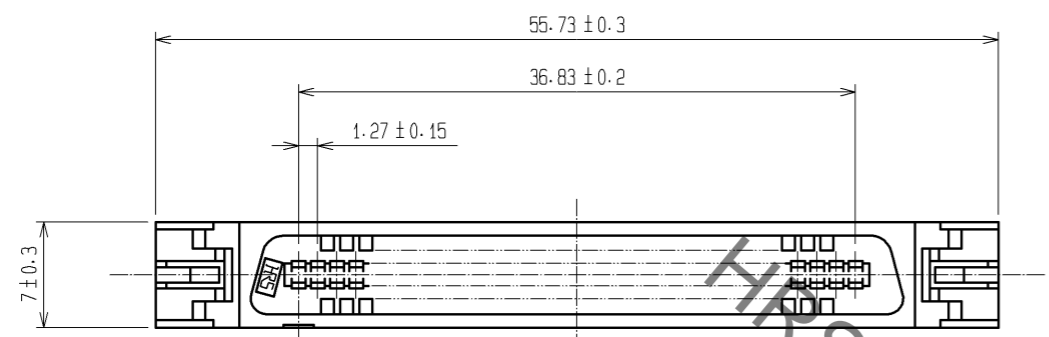
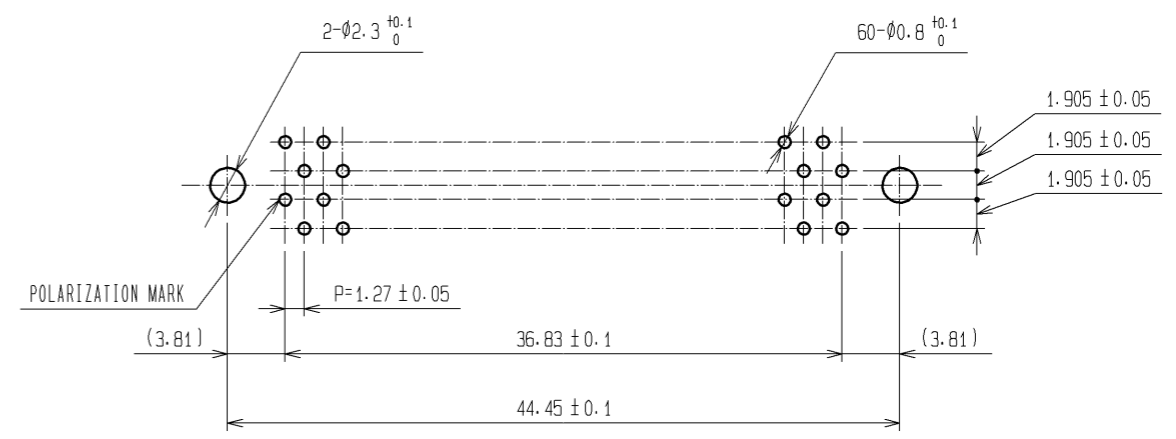


Oct.1.2020 Copyright 2020 HIROSE ELECTRIC CO., LTD. All Rights Reserved.
 In case of consideration for using Automotive equipment / device which demand high reliability, kindly contact our sales window correspondents.



RECOMMENDED PC BOARD HOLE PATTERN(MOUNTING SIDE)



NOTE 1 THE DIMENSIONS IN PARENTHESES ARE FOR REFERENCE.

4	PHOSPHOR BRONZE	TIN-PLATING							CONTACT AREA:GOLD 0.2 #m min.
1,2	POLYAMIDE	BLACK UL94V-0		3	PHOSPHOR BRONZE				DIP AREA:TIN-PLATING 2#m min.
									UNDER PLATING:NICKEL 2#m min.
NO.	MATERIAL	FINISH .	REMARKS	NO.	MATERIAL	FINISH .	REMARKS		
UNITS		SCALE	COUNT	DESCRIPTION OF REVISIONS			DESIGNED	CHECKED	DATE
mm		2 : 1							
HRS HIROSE ELECTRIC CO., LTD.		APPROVED : HS. OKAWA	08.07.16	DRAWING NO.		EDC3-082376-21			
		CHECED : HT. YAMAGUCHI	08.07.16	PART NO.		FX2B-60P-1.27DSAL(71)			
		DESIGNED : KN. SHIBUYA	08.07.15	CODE NO.		CL572-0855-3-71			
		DRAWN : AH. EDASHIGE	08.06.17						