

THIS DRAWING IS UNPUBLISHED.

RELEASED FOR PUBLICATION

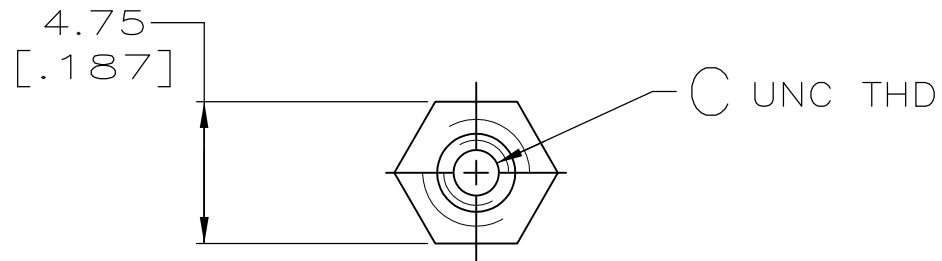
© COPYRIGHT - By -

ALL RIGHTS RESERVED.

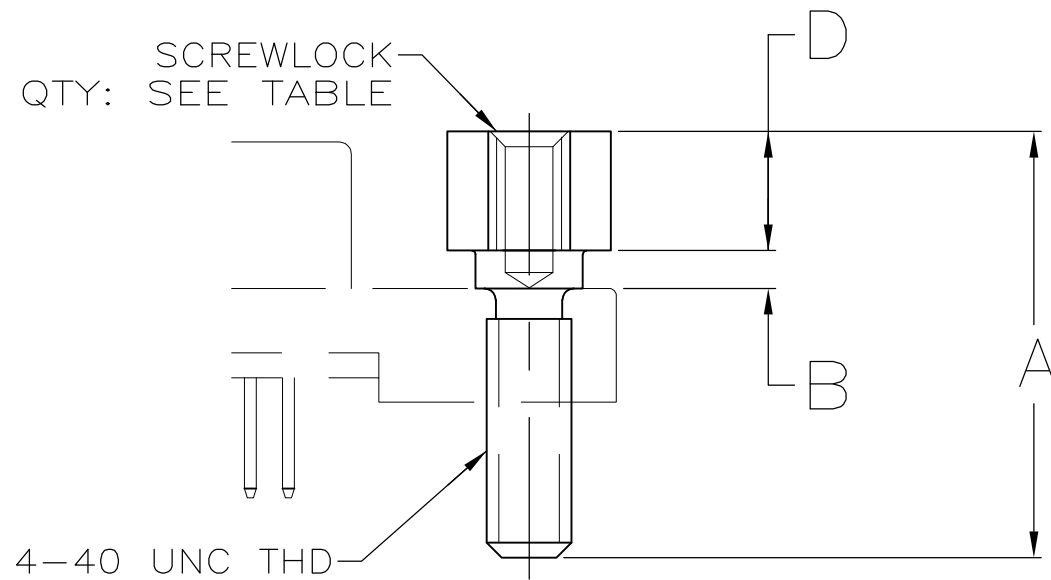
LOC GP DIST 00

REVISIONS

P	LTR	DESCRIPTION	DATE	DWN	APVD
	M3	REVISED PER ECO-11-004835	11MAR11	RK	HMR



1 OBSOLETE PARTS: OBSOLETE CIS STREAMLINING PER D.RENAUD/D.SINISI



1	OBSOLETE	1000	4.19 [0.165]	2-56	1.07 [0.042]	14.27 [0.562]	<del>749087-8</del>
	OBSOLETE	1000	3.99 [0.157]	2-56	1.27 [0.050]	14.27 [0.562]	749087-7
	OBSOLETE	2	3.71±0.05 [0.146±0.002]	2-56	1.27 [0.050]	13.92 [0.548]	749087-6
	OBSOLETE	1000	3.99 [0.157]	4-40	1.27 [0.050]	18.29 [0.720]	749087-5
		2	4.19 [0.165]	2-56	1.07 [0.042]	14.27 [0.562]	749087-4
		1000	3.99 [0.157]	2-56	1.27 [0.050]	9.65 [0.380]	749087-3
		2	3.99 [0.157]	2-56	1.27 [0.050]	9.65 [0.380]	749087-2
		2	3.99 [0.157]	2-56	1.27 [0.050]	14.27 [0.562]	749087-1
SCREWLOCKS PER BAG			D	C	B	A	PART NUMBER

THIS DRAWING IS A CONTROLLED DOCUMENT.

DWN D.GELTZ 11/24/93

CHK R.STONE 02/25/94

APVD -

PRODUCT SPEC -

APPLICATION SPEC -

WEIGHT -

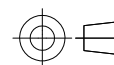
CUSTOMER DRAWING

STE TE Connectivity

SCREWLOCK KIT, FEMALE, AMPLIMITE, .050 SERIES

SIZE	CAGE CODE	DRAWING NO	RESTRICTED TO
A3	00779	C-749087	-

DIMENSIONS: INCHES



TOLERANCES UNLESS OTHERWISE SPECIFIED:

0 PLC	± -
1 PLC	± -
2 PLC	± 0.13 [0.005]
3 PLC	± -
4 PLC	± -
ANGLES	± -

MATERIAL STAINLESS STEEL

FINISH -

SCALE	SHEET	REV
4:1	1 OF 1	M3

# Mouser Electronics

Authorized Distributor

Click to View Pricing, Inventory, Delivery & Lifecycle Information:

[TE Connectivity:](#)

[749087-1](#)