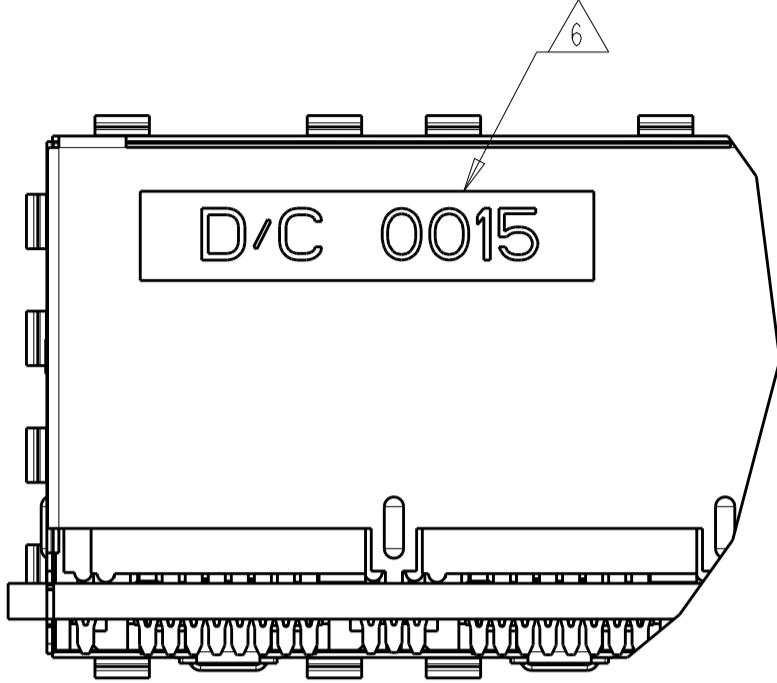
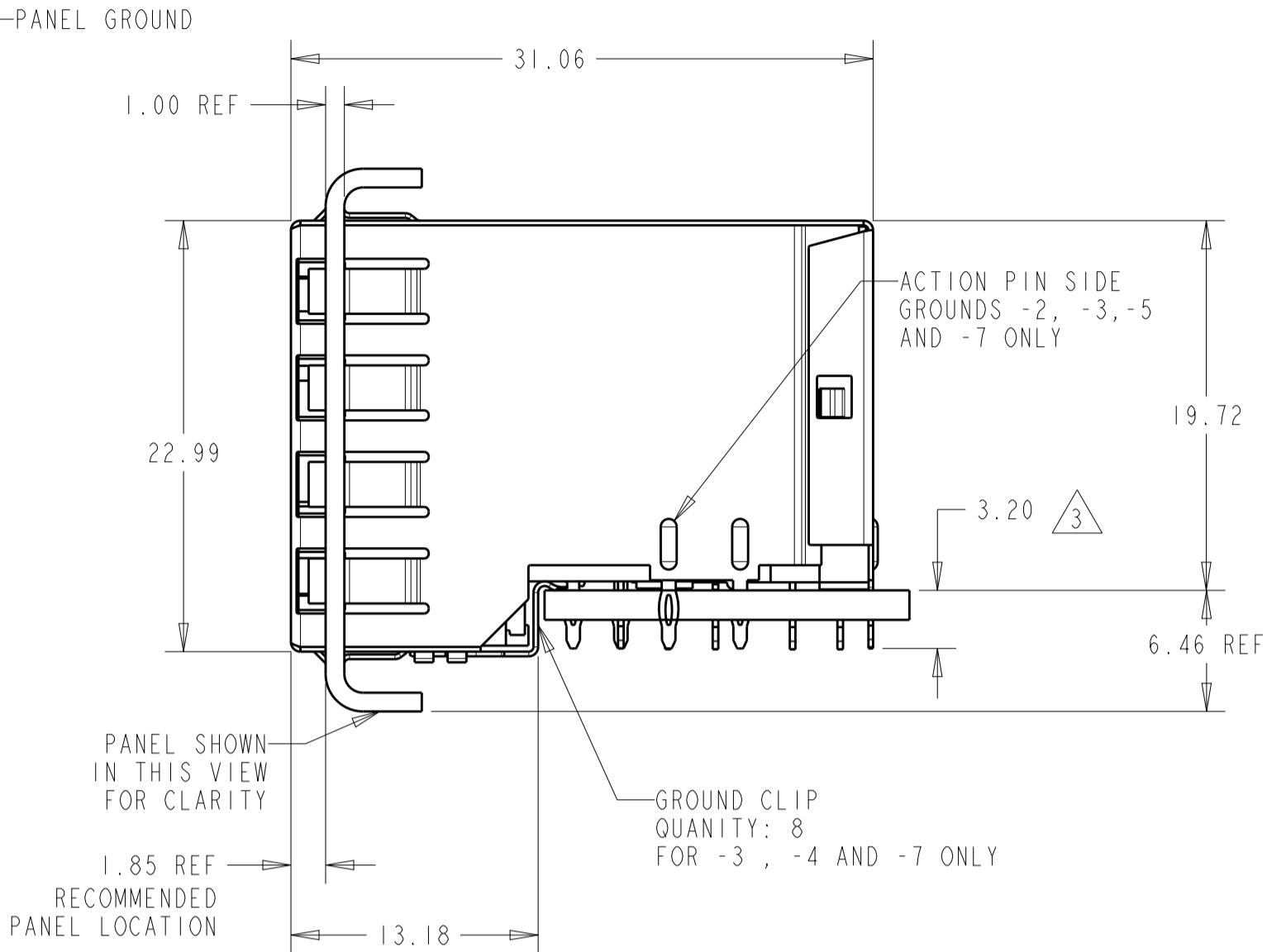
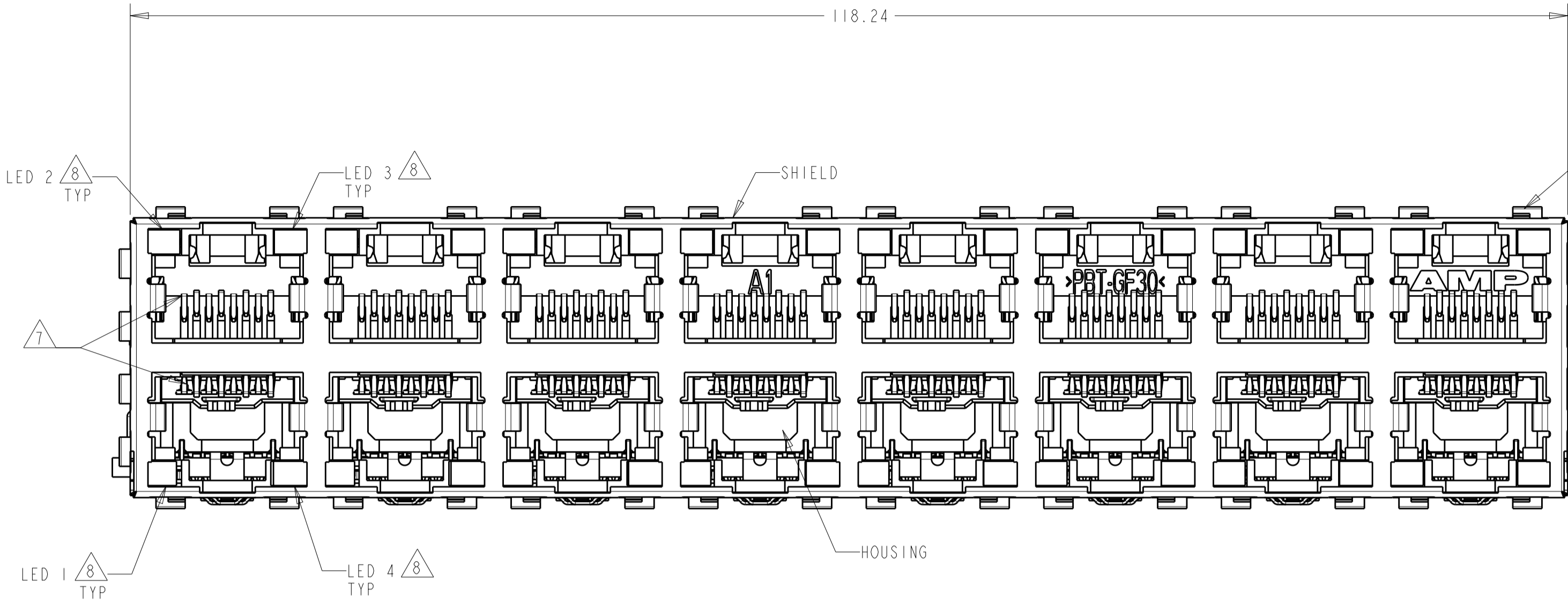
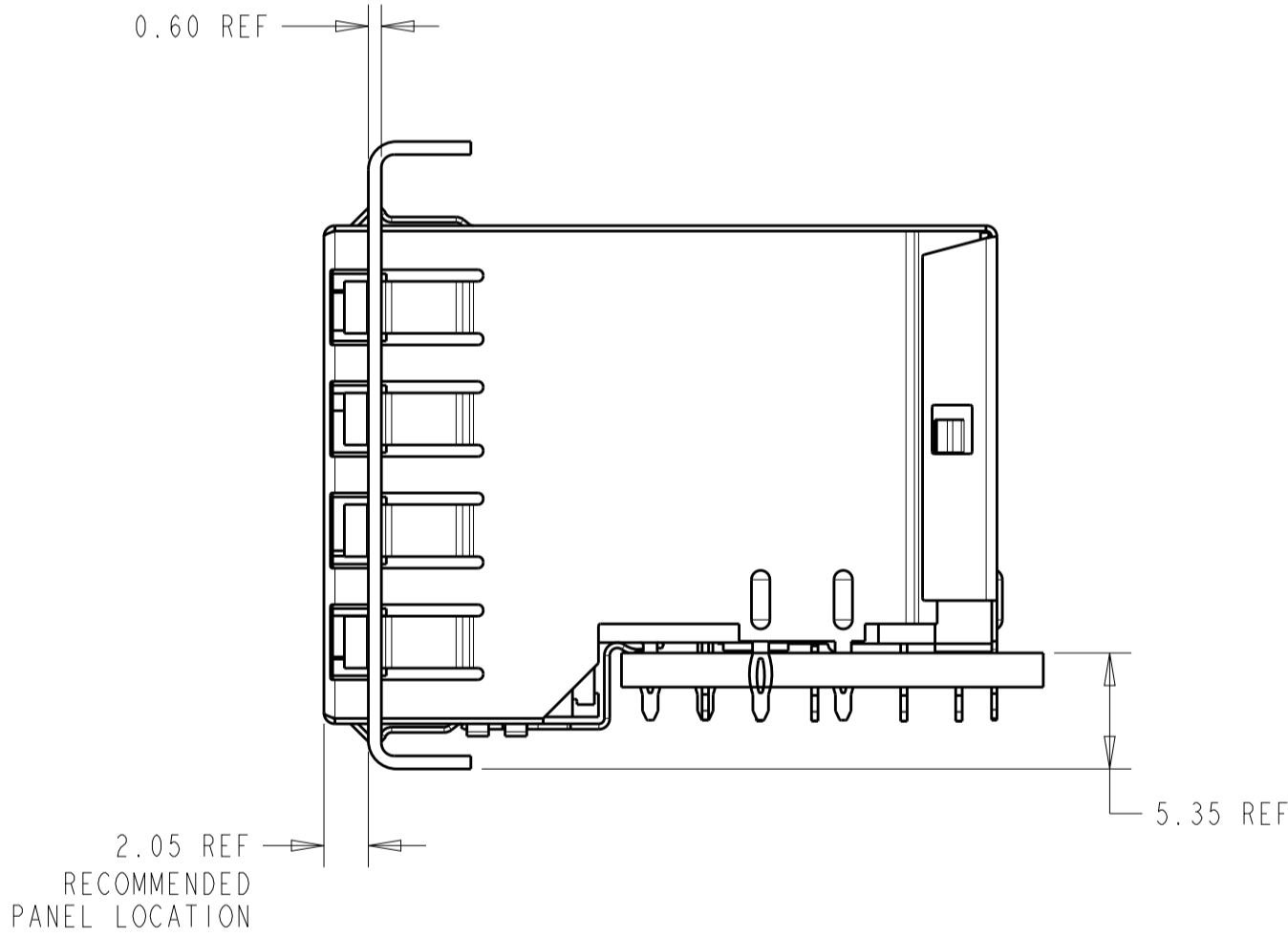


REVISIONS					
P	LTR	DESCRIPTION	DATE	DWN	APVD
D		REV PER ECR-09-024937	12NOV2009	DZ	SY
E		ECO-15-006810	22JAN2016	LL	SH



ATCA PANEL AND
PRINTED CIRCUIT BOARD
ASSEMBLY LAYOUT



AMC PANEL AND
PRINTED CIRCUIT BOARD
ASSEMBLY LAYOUT

- MATERIAL:
HOUSING:
PBT POLYESTER, BLACK, UL 94V-0
TERMINALS:
0.33 THICK PHOSPHOR BRONZE PLATED WITH 1.27µm MINIMUM THICK
HARD GOLD IN LOCALIZED AREA AND 2.0µm MINIMUM THICK
MATTE TIN IN COMPLIANT PIN TERMINAL AREA
OVER 1.27µm MINIMUM THICK NICKEL UNDERPLATE

SHIELD:
0.25 THICK COPPER ALLOY PLATED WITH 2.03µm MINIMUM TIN
OVER 1.27 µm MINIMUM NICKEL

GROUND CLIP: 0.25 THICK COPPER ALLOY PRE-PLATED WITH 2.03µm
MINIMUM MATTE TIN OVER 1.27µm MINIMUM NICKEL

LIGHT EMITTING DIODE (LED):
DIFFUSED EPOXY LENS, 12.95 CARBON STEEL WIREFRAME LEADS
PREPLATED WITH 8.89µm THICK Sn/Cu OVER 2.03µm THICK Ag
OVER 1.02µm THICK Cu OVER 3.56µm THICK Ni OVER
1.02µm THICK Cu UNDERPLATE

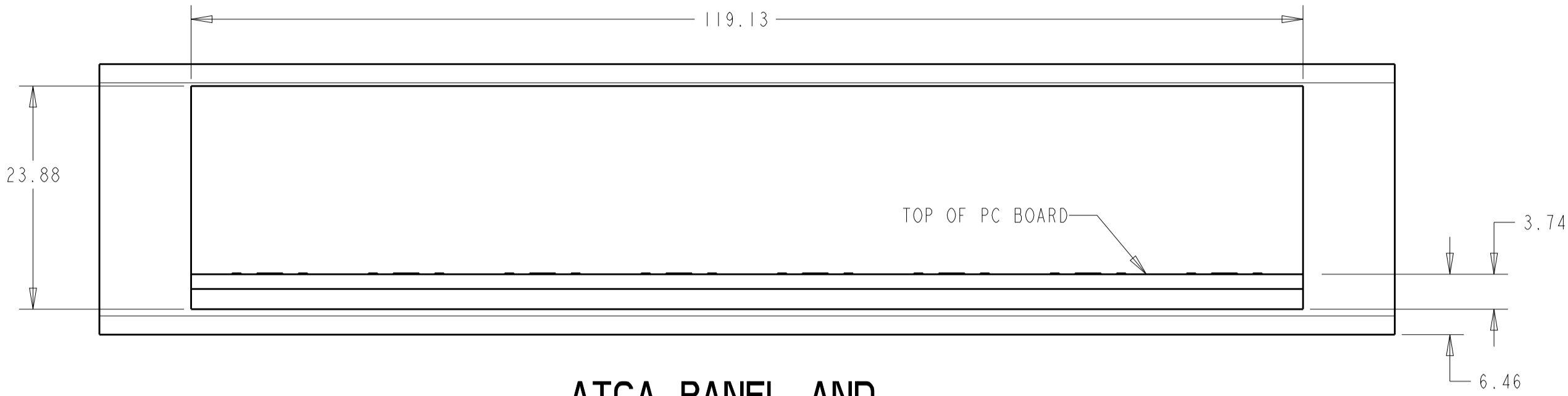
LED COMPLIANT PIN CONTACTS:
0.3 THICK BRASS PLATED WITH 2µm MINIMUM MATTE TIN OVER
1.27µm MINIMUM NICKEL UNDERPLATE.
- JACK CAVITY CONFORMS TO FCC RULES AND REGULATIONS, PART 68
SUBPART F.

- 3 MAXIMUM PIN LENGTH 3.40 FROM TOP SURFACE OF PC BOARD
- 4 FINISHED PLATED THROUGH HOLE DIAMETER - ANNULAR RING
DIAMETER 1.3 TO 1.5
- 5 DATUMS AND BASIC DIMENSIONS ESTABLISHED BY CUSTOMER
- 6 DATE CODE LOCATED ON REAR OF PART APPROXIMATELY AS SHOWN
- 7 CONTACTS ARE NOT INTENDED TO BE ALIGNED WITH EACH OTHER
- 8 SUGGESTED OPERATING CURRENT FOR LEDS IS 20mA

15.88	GREEN/YELLOW	GREEN/YELLOW	GREEN/YELLOW	GREEN/YELLOW	YES	WITH GROUND CLIP	1888655-7
16.13	YELLOW	YELLOW	GREEN/YELLOW	GREEN/YELLOW	YES	WITHOUT GROUND CLIP	1888655-6
16.13	YELLOW	YELLOW	GREEN	GREEN	YES	WITHOUT GROUND CLIP	1888655-5
15.88	GREEN	GREEN	GREEN	GREEN	NO	WITH GROUND CLIP	1888655-4
15.88	GREEN	GREEN	GREEN	GREEN	YES	WITH GROUND CLIP	1888655-3 (SHOWN)
16.13	GREEN	GREEN	GREEN	GREEN	YES	WITHOUT GROUND CLIP	1888655-2
16.13	GREEN	GREEN	GREEN	GREEN	NO	WITHOUT GROUND CLIP	1888655-1
M DIM	LED #4 (LOWER-RIGHT)	LED #3 (UPPER-RIGHT)	LED #2 (UPPER-LEFT)	LED #1 (LOWER-LEFT)	SHIELD SIDE ACTION PIN	DESCRIPTION	PART NUMBER

THIS DRAWING IS A CONTROLLED DOCUMENT.		DWN L.A.MAYER 31OCT2006	NAME STACKED MODULAR JACK ASSEMBLY, 2 X 8, 8 POSN, SHIELDED, PANEL GROUND, OFFSET, CAT 5	SIZE A1	CAGE CODE 00779	DRAWING NO 1888655	RESTRICTED TO -
DIMENSIONS:		CHK J.WESTMAN 31OCT2006					
mm		APVD S.FLICKINGER 31OCT2006					
TOLERANCES UNLESS OTHERWISE SPECIFIED:		PRODUCT SPEC 108-1854					
MATERIAL		APPLICATION SPEC 114-2160					
SEE NOTE 1		WEIGHT -					
		CUSTOMER DRAWING					

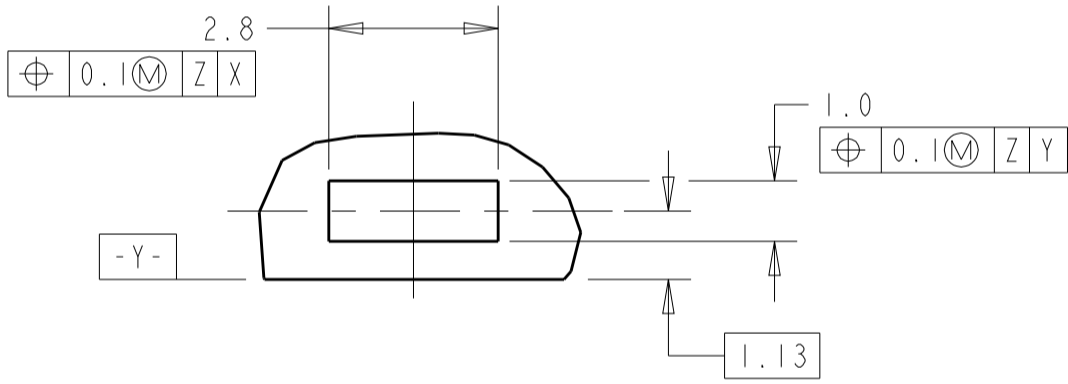
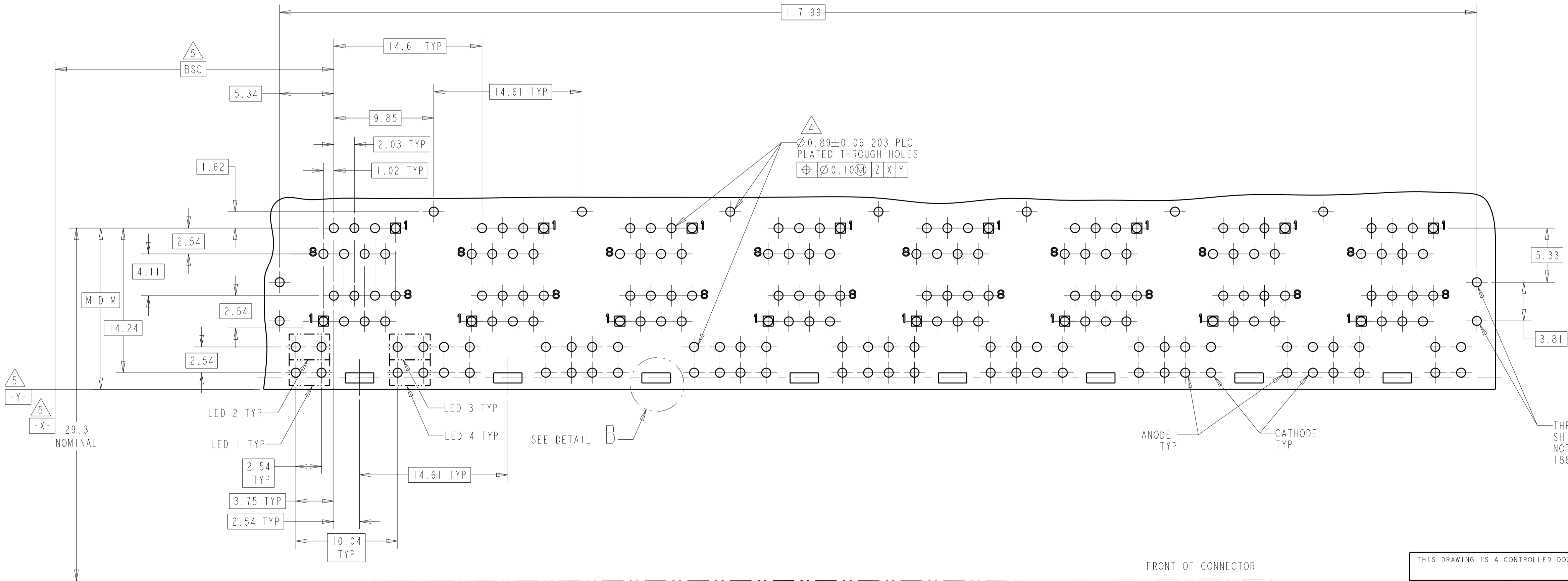
REVISIONS					
P	LTR	DESCRIPTION	DATE	DWN	APVD
-	-	SEE SHEET 1	-	-	-



ATCA PANEL AND
PRINTED CIRCUIT BOARD LAYOUT
SCALE 2:1



AMC PANEL AND
PRINTED CIRCUIT BOARD LAYOUT
SCALE 2:1



DETAIL B
SCALE 8:1
PLATED PADS REQUIRED FOR
1888655-3, -4 AND -7 (PRODUCT WITH
GROUNDING CLIP)
8 PLC

PC BOARD LAYOUT
(COMPONENET SIDE)

THIS DRAWING IS A CONTROLLED DOCUMENT.		DWN L.A.MAYER 31OCT2006		
DIMENSIONS:		CHK J.WESTMAN 31OCT2006		
mm	TOLERANCES UNLESS OTHERWISE SPECIFIED:	APVD S.FLICKINGER 31OCT2006	NAME	
	0 PLC ± 1 PLC ±0.13 2 PLC ± 3 PLC ± 4 PLC ±	PRODUCT SPEC 108-1854	STACKED MODULAR JACK ASSEMBLY, 2 X 8, 8 POSN, SHIELDED, PANEL GROUND, OFFSET, CAT 5	
MATERIAL	ANGLES ±1° FINISH	APPLICATION SPEC 114-2160	SIZE	RESTRICTED TO
SEE NOTE 1	-	WEIGHT	A1 00779 ©=1888655	-
	-	CUSTOMER DRAWING	SCALE 2:1	SHEET 2 OF 2 REV E

Mouser Electronics

Authorized Distributor

Click to View Pricing, Inventory, Delivery & Lifecycle Information:

[TE Connectivity:](#)

[1888655-6](#)