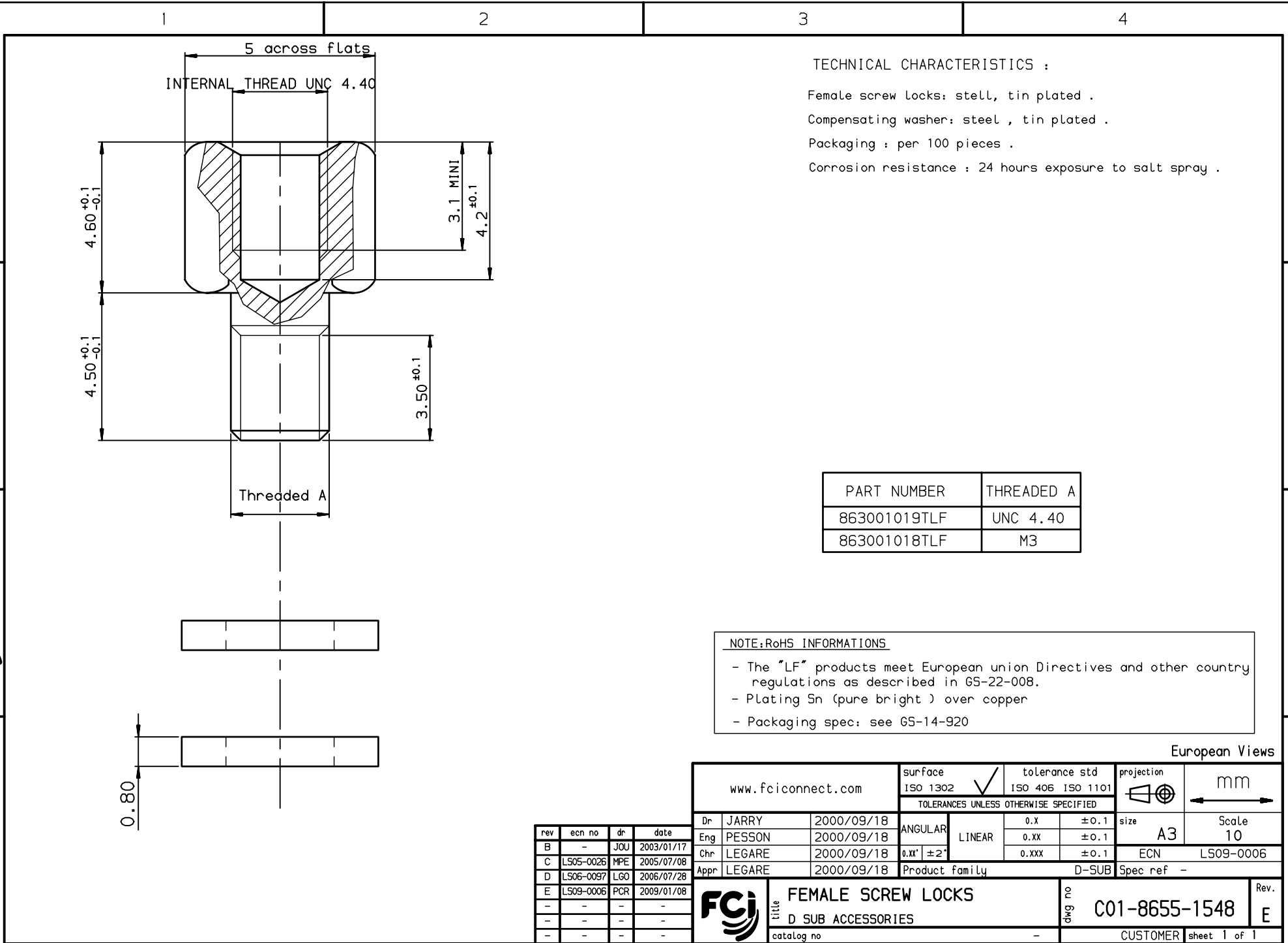


Copyright FCI, FCI



TECHNICAL CHARACTERISTICS :

Female screw locks: steel, tin plated .
Compensating washer: steel , tin plated .
Packaging : per 100 pieces .
Corrosion resistance : 24 hours exposure to salt spray .

PART NUMBER	THREADED A
863001019TLF	UNC 4.40
863001018TLF	M3

NOTE:RoHS INFORMATIONS

- The "LF" products meet European union Directives and other country regulations as described in 65-22-008.
- Plating Sn (pure bright) over copper
- Packaging spec: see 65-14-920

rev	ecn no	dr	date
B	-	JOU	2003/01/17
C	LS05-0026	MPE	2005/07/08
D	LS06-0097	LGO	2006/07/28
E	LS09-0006	PCR	2009/01/08
-	-	-	-
-	-	-	-
-	-	-	-

www.fciconnect.com		surface ISO 1302 <input checked="" type="checkbox"/>	tolerance std ISO 406 ISO 1101	projection 	mm
TOLERANCES UNLESS OTHERWISE SPECIFIED					
Dr	JARRY	2000/09/18	ANGULAR	0.X	± 0.1
Eng	PESSON	2000/09/18	LINEAR	0.XX	± 0.1
Chr	LEGARE	2000/09/18	0.XX' $\pm 2'$	0.XXX	± 0.1
Appr	LEGARE	2000/09/18	Product family		D-SUB
Title				size	Scale
FEMALE SCREW LOCKS				A3	10
D SUB ACCESSORIES				ECN	LS09-0006
catalog no				Spec ref	-
FCI				dwg no	C01-8655-1548
Rev.				sheet	1 of 1
				CUSTOMER	

REV F - 2006-04-17

Mouser Electronics

Authorized Distributor

Click to View Pricing, Inventory, Delivery & Lifecycle Information:

[FCI / Amphenol:](#)

[863001018TLF](#) [863001019TLF](#)