

## Pin/socket, panel feed-through - SM-7EE1N8AS000 - 1605824


Please be informed that the data shown in this PDF Document is generated from our Online Catalog. Please find the complete data in the user's documentation. Our General Terms of Use for Downloads are valid (<http://phoenixcontact.com/download>)



Pin/socket, panel feed-through, straight, M40, M40, number of positions: 4+3+PE, type of contact: Socket, Crimp connection, Axial O-ring, 4x Ø4,2, shielded: yes, cable diameter range: 0 mm ... 0 mm

RoHS

### Key Commercial Data

|              |   |
|--------------|---|
| Packing unit | 1 pc  |
| GTIN         | <br>4 046356 255059 |
| GTIN         | 4046356255059   |

### Technical data

#### General

|  |                  |
|--|------------------|
| Type of locking                            | M40              |
| Coding                                     | N                |
| Contact connection method                  | Crimp connection |
| Type of contacts                           | Socket           |
| Number of positions                        | 8                |
| Nominal current per power contact at 25°C  | 30 A             |
| Nominal current per signal contact at 25°C | 70 A             |
| Conductor entry                            | 0 mm ... 0 mm    |
| Pg housing screw connection                | none             |
| Mounting type                              | 4x Ø4,2          |

#### Ambient conditions

|                      |                   |
|----------------------|-------------------|
| Ambient temperature  | -40 °C ... 125 °C |
| Degree of protection | IP67              |

#### Material

|                            |  |
|----------------------------|--|
| Housing material           | Turned parts: copper zinc alloy (CuZn), die-cast parts: zinc (GD-Zn) |
| Insulator material         | PA 6.6   |
| Gasket and O-ring material | FPM  |

# Pin/socket, panel feed-through - SM-7EE1N8AS000 - 1605824

## Technical data

Specifications according to DIN EN 61984:2001

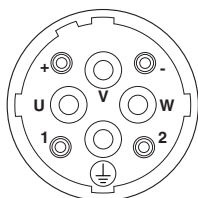
|  |        |
|--|--------|
| Installation height max.                       | 3000 m |
| Nominal / operating voltage of power contacts  | 250 V  |
| Rated surge voltage of power contacts          | 4 kV   |
| Overvoltage category of power contacts         | III    |
| Degree of pollution of power contacts          | 3      |
| Nominal / operating voltage of signal contacts | 630 V  |
| Rated surge voltage of signal contacts         | 6 kV   |
| Overvoltage category of signal contacts        | III    |
| Degree of pollution of signal contacts         | 3      |

## Environmental Product Compliance

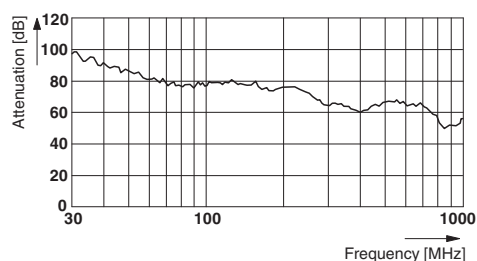
|            |   |
|------------|---|
| REACH SVHC | Lead 7439-92-1  |
| China RoHS | Environmentally Friendly Use Period = 50  |
|            | For details about hazardous substances go to tab "Downloads", Category "Manufacturer's declaration" |

## Drawings

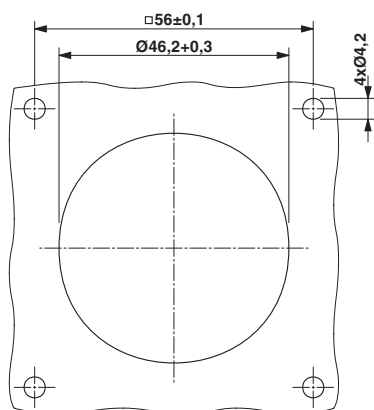
Schematic diagram



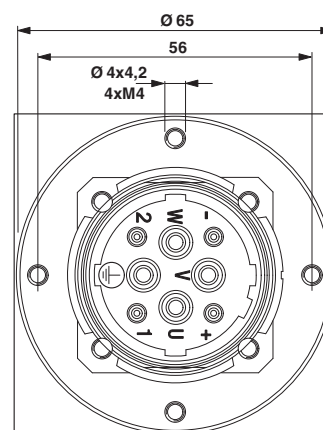
Diagram



Dimensional drawing

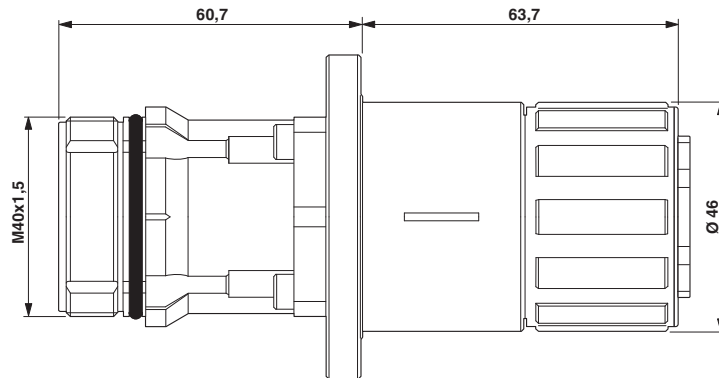


Dimensional drawing



## Pin/socket, panel feed-through - SM-7EE1N8AS000 - 1605824

Dimensional drawing



Phoenix Contact 2018 © - all rights reserved  
<http://www.phoenixcontact.com>

PHOENIX CONTACT GmbH & Co. KG  
Flachsmarktstr. 8  
32825 Blomberg  
Germany  
Tel. +49 5235 300  
Fax +49 5235 3 41200  
<http://www.phoenixcontact.com>

# Mouser Electronics

Authorized Distributor

Click to View Pricing, Inventory, Delivery & Lifecycle Information:

Phoenix Contact:

1605824