

9

8

7

6

5

4

3

2

1

E

D









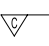

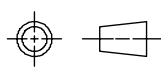
C

B

A

ASSEMBLY WITHOUT CAP IN TUBE

CKT SIZE	DIM A	DIM B	PC TAIL DIMENSION "C" = 3.00			PC TAIL DIMENSION "C" = 1.90				
			PLATING OPTION: 5	PLATING OPTION: 4	PLATING OPTION: 6	PLATING OPTION: 5	PLATING OPTION: 4	PLATING OPTION: 6		
04	4.19	2.00	79107-7001	79107-7051	X	79107-7126	79107-7201	79107-7251	X	79107-7326
06	6.19	4.00	79107-7002	79107-7052	X	79107-7127	79107-7202	79107-7252	X	79107-7327
08	8.19	6.00	79107-7003	79107-7053	X	79107-7128	79107-7203	79107-7253	X	79107-7328
10	10.19	8.00	79107-7004	79107-7054	X	79107-7129	79107-7204	79107-7254	X	79107-7329
12	12.19	10.00	79107-7005	79107-7055		79107-7130	79107-7205	79107-7255		79107-7330
14	14.19	12.00	79107-7006	79107-7056	X	79107-7131	79107-7206	79107-7256	X	79107-7331
16	16.19	14.00	79107-7007	79107-7057	X	79107-7132	79107-7207	79107-7257	X	79107-7332
18	18.19	16.00	79107-7008	79107-7058	X	79107-7133	79107-7208	79107-7258	X	79107-7333
20	20.19	18.00	79107-7009	79107-7059	X	79107-7134	79107-7209	79107-7259	X	79107-7334
22	22.19	20.00	79107-7010	79107-7060	X	79107-7135	79107-7210	79107-7260	X	79107-7335
24	24.19	22.00	79107-7011	79107-7061	X	79107-7136	79107-7211	79107-7261	X	79107-7336
26	26.19	24.00	79107-7012	79107-7062	X	79107-7137	79107-7212	79107-7262	X	79107-7337
28	28.19	26.00	79107-7013	79107-7063	X	79107-7138	79107-7213	79107-7263	X	79107-7338
30	30.19	28.00	79107-7014	79107-7064	X	79107-7139	79107-7214	79107-7264	X	79107-7339
32	32.19	30.00	79107-7015	79107-7065	X	79107-7140	79107-7215	79107-7265	X	79107-7340
34	34.19	32.00	79107-7016	79107-7066	X	79107-7141	79107-7216	79107-7266	X	79107-7341
36	36.19	34.00	79107-7017	79107-7067	X	79107-7142	79107-7217	79107-7267	X	79107-7342
38	38.19	36.00	79107-7018	79107-7068	X	79107-7143	79107-7218	79107-7268	X	79107-7343
40	40.19	38.00	79107-7019	79107-7069	X	79107-7144	79107-7219	79107-7269	X	79107-7344
42	42.19	40.00	79107-7020	79107-7070	X	79107-7145	79107-7220	79107-7270	X	79107-7345
44	44.19	42.00	79107-7021	79107-7071	X	79107-7146	79107-7221	79107-7271	X	79107-7346
46	46.19	44.00	79107-7022	79107-7072	X	79107-7147	79107-7222	79107-7272	X	79107-7347
48	48.19	46.00	79107-7023	79107-7073	X	79107-7148	79107-7223	79107-7273	X	79107-7348
50	50.19	48.00	79107-7024	79107-7074	X	79107-7149	79107-7224	79107-7274	X	79107-7349

QUALITY SYMBOLS	THIS DRAWING CONTAINS INFORMATION THAT IS PROPRIETARY TO MOLEX ELECTRONIC TECHNOLOGIES, LLC AND SHOULD NOT BE USED WITHOUT WRITTEN PERMISSION									
 = 0	SHT3: ADD 79107-7417 EC NO: 173923 DRWN: GMENARLY CHK'D: ISHWARG APPR: ISHWARG	2017/11/27 2018/03/23 2018/03/23	GENERAL TOLERANCES (UNLESS SPECIFIED)	DIMENSION UNITS		SCALE				
 = 0				MM		NTS				
 = 0				DRWN BY		DATE				
 = 0				AAB		1989/05/15				
 = 0				CHK'D BY		DATE				
 = 0				MJM		1989/05/15				
 = 0			APPR BY		DATE					
 = 0			WAZ		1989/05/15					
 = 0			DRAWING SIZE		THIRD ANGLE PROJECTION					
			A3							
	DRAFT WHERE APPLICABLE MUST REMAIN WITHIN DIMENSIONS									

RELEASE STATUS	P1	RELEASE DATE	2018/03/23	06:07:23				
9	8	7	6	5	4	3	2	1

FORMAT: master-ib-prod-A3
REVISION: 5
DATE: 2017/02/08

9

8

7

6

5

4

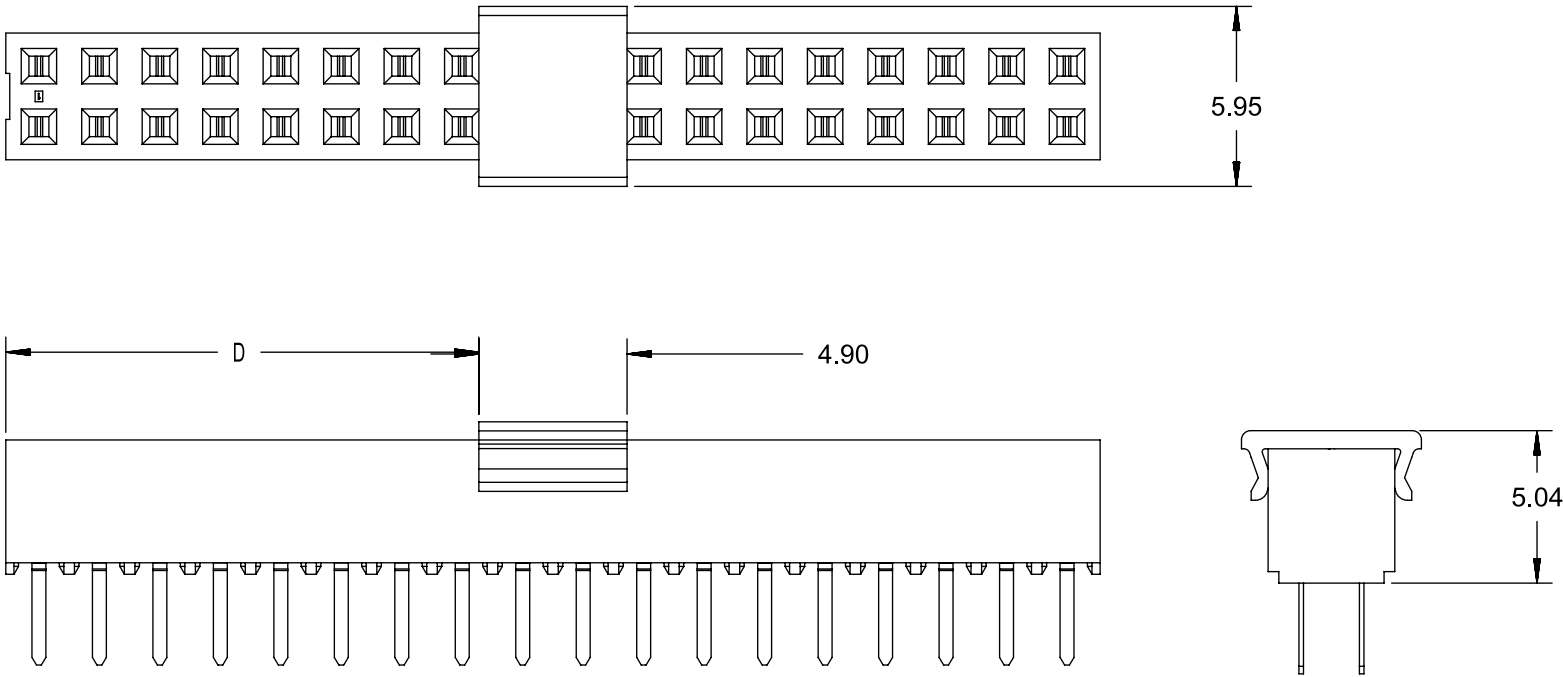
3

2

1

ASSEMBLY WITH CAP IN TAPE & REEL

CKT SIZE	ASSEMBLY PART NO	DIM A	DIM B	DIM C	DIM D	PLATING OPTION
36	79107-7417	36.19	34.00	3.00	15.65	5



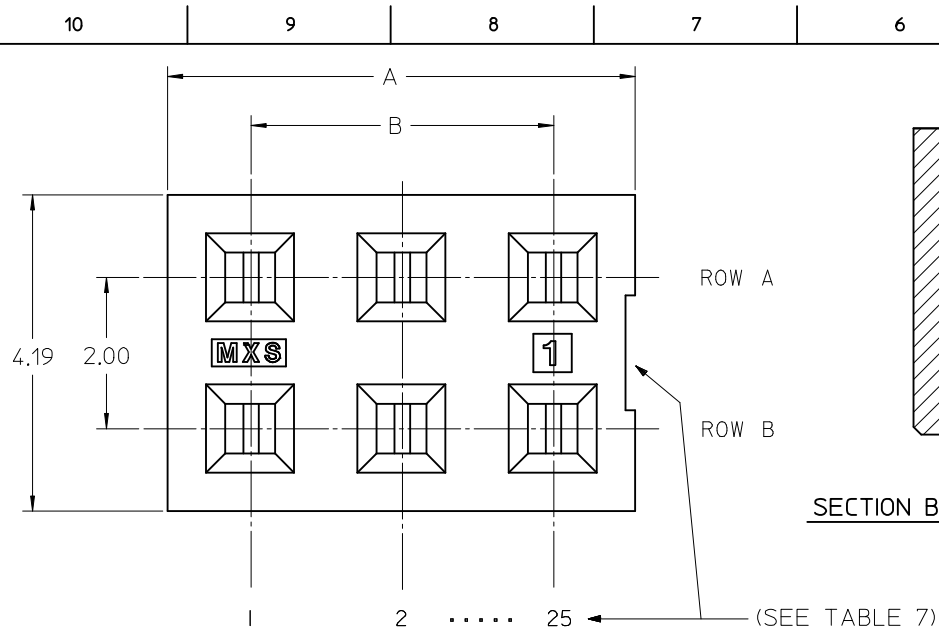
QUALITY SYMBOLS		THIS DRAWING CONTAINS INFORMATION THAT IS PROPRIETARY TO MOLEX ELECTRONIC TECHNOLOGIES, LLC AND SHOULD NOT BE USED WITHOUT WRITTEN PERMISSION													
	= 0	SHT3: ADD 79107-7417 EC NO: 173923 DRWN: GMENARLY CHK'D: ISHWARG APPR: ISHWARG	2017/11/27 2018/03/23 2018/03/23	GENERAL TOLERANCES (UNLESS SPECIFIED) ANGULAR TOL ± 0.5 °		DIMENSION UNITS		SCALE		<div>molex®</div> <div>2MM DUAL ROW VERTICAL RECEPTACLE T/H</div>					
	= 0					MM		NTS							
	= 0					DRWN BY		DATE							
	= 0					AAB		1989/05/15							
	= 0					CHK'D BY		DATE							
	= 0					MJM		1989/05/15							
	= 0					APPR BY		DATE		PRODUCT CUSTOMER DRAWING					
	= 0					WAZ		1989/05/15							
	= 0					DRAWING SIZE		THIRD ANGLE PROJECTION		SERIES	MATERIAL NUMBER		CUSTOMER		
	= 0					A3				79107	SEE TABLE		GENERAL MARKET		
	= 0	DRAFT WHERE APPLICABLE MUST REMAIN WITHIN DIMENSIONS				DOCUMENT NUMBER		DOC TYPE	DOC PART	SHEET NUMBER					
	= 0	H4		REV		SDA-79107-++++		PSD	001	3 OF 4					

MOLDED VOID OPTION
ASSEMBLIES WITHOUT PEGS

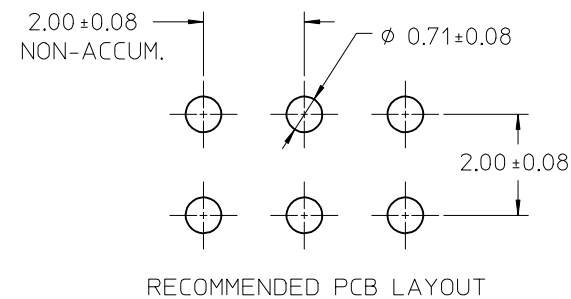
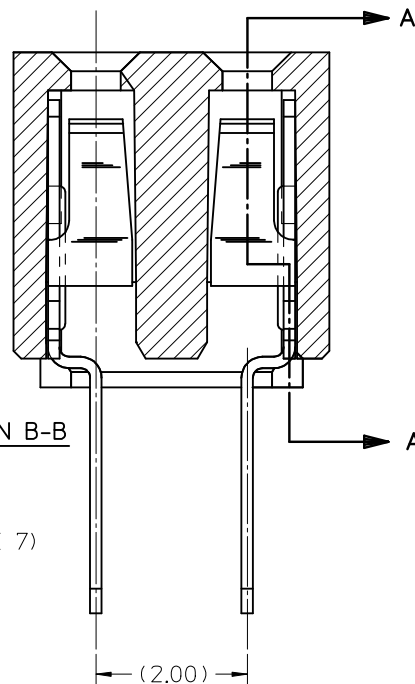
CKT SIZE	ASSEMBLY	HOUSING		VOID LOCATION(S) SEE SHEET 1 FOR CONVENTION		TERMINAL		PLATING OPTIONS	DIM A	DIM B	DIM C PC TAIL
		EDP NO.	ENG. NO	ROW	CKT. NO. (S)	EDP NO.	ENG. NO				
24	79107-5101	050-40-1422	79105-0501			791061012	79106-1012	5	24.19	22.00	3.00
				ROW B	6						
10	79107-5102	050-40-1410	79105-0504	ROW A	5	791061012	79106-1012	5	10.19	8.00	3.00
26	79107-5103	050-40-1426	79105-0505			791061012	79106-1012	5	26.19	24.00	3.00
				ROW B	5						
20	79107-5104	79105-0510	79105-0510	ROW A	7	791061112	79106-1112	5	20.19	18.00	1.91
24	79107-5105	79105-0511	79105-0511			791061112	79106-1112	5	24.19	22.00	1.91
				ROW B	10						
20	79107-5106	79105-0510	79105-0510	ROW A	7	791061012	79106-1012	5	20.19	18.00	3.00
24	79107-5107	79105-0511	79105-0511			791061012	79106-1012	5	24.19	22.00	3.00
				ROW B	10						

NOTES:
1. TERMINALS WILL BE PRESENT IN VOIDED LOCATIONS. HOWEVER, PIN WINDOWS WILL BE CLOSED
2. VOIDS CAN ONLY BE PRESENT IN ONE ROW OF A CONNECTOR

<div>QUALITY SYMBOLS</div> <div><div><div><div><div></div></div><div>A</div></div><div>= 0</div></div><div><div><div><div><div></div></div><div>F</div></div><div>= 0</div></div><div><div><div><div><div></div></div><div>P</div></div><div>= 0</div></div><div><div><div><div><div></div></div><div>▼</div></div><div>= 0</div></div><div><div><div><div><div></div></div><div>C</div></div><div>= 0</div></div><div><div><div><div><div></div></div><div>⊠</div></div><div>= 0</div></div><div><div><div><div><div></div></div><div>■</div></div><div>= 0</div></div><div><div><div><div><div></div></div><div>▽</div></div><div>= 0</div></div></div></div></div></div></div></div></div></div>	THIS DRAWING CONTAINS INFORMATION THAT IS PROPRIETARY TO MOLEX ELECTRONIC TECHNOLOGIES, LLC AND SHOULD NOT BE USED WITHOUT WRITTEN PERMISSION																																	
	<div>SHT3: ADD 79107-7417</div> <div>EC NO: 173923</div> <div>DRWN: GMENARLY</div> <div>CHK'D: ISHWARG</div> <div>APPR: ISHWARG</div> <div>H4</div>				GENERAL TOLERANCES (UNLESS SPECIFIED)		DIMENSION UNITS		SCALE		<div>molex®</div> <div>2MM DUAL ROW VERTICAL RECEPTACLE T/H</div> <div>PRODUCT CUSTOMER DRAWING</div> <table><tr><td>SERIES</td><td>MATERIAL NUMBER</td><td colspan="2">CUSTOMER</td></tr><tr><td>79107</td><td>SEE TABLE</td><td colspan="2">GENERAL MARKET</td></tr><tr><td colspan="2">DOCUMENT NUMBER</td><td>DOC TYPE</td><td>DOC PART</td><td colspan="2">SHEET NUMBER</td></tr><tr><td colspan="2">SDA-79107-++++</td><td>PSD</td><td>001</td><td colspan="2">4 OF 4</td></tr></table>				SERIES	MATERIAL NUMBER	CUSTOMER		79107	SEE TABLE	GENERAL MARKET		DOCUMENT NUMBER		DOC TYPE	DOC PART	SHEET NUMBER		SDA-79107-++++		PSD	001	4 OF 4	
							SERIES	MATERIAL NUMBER	CUSTOMER																									
							79107	SEE TABLE	GENERAL MARKET																									
							DOCUMENT NUMBER		DOC TYPE	DOC PART					SHEET NUMBER																			
							SDA-79107-++++		PSD	001					4 OF 4																			
	MM		NTS																															
	DRWN BY		DATE																															
	AAB		1989/05/15																															
	CHK'D BY		DATE																															
MJM		1989/05/15																																
APPR BY		DATE																																
WAZ		1989/05/15																																
DRAWING SIZE		THIRD ANGLE PROJECTION																																
A3																																		
DRAFT WHERE APPLICABLE MUST REMAIN WITHIN DIMENSIONS		ANGULAR TOL ± 0.5 °																																
		4 PLACES	±																															
		3 PLACES	±																															
		2 PLACES	± 0.25																															
		1 PLACE	±																															
		0 PLACES	±																															

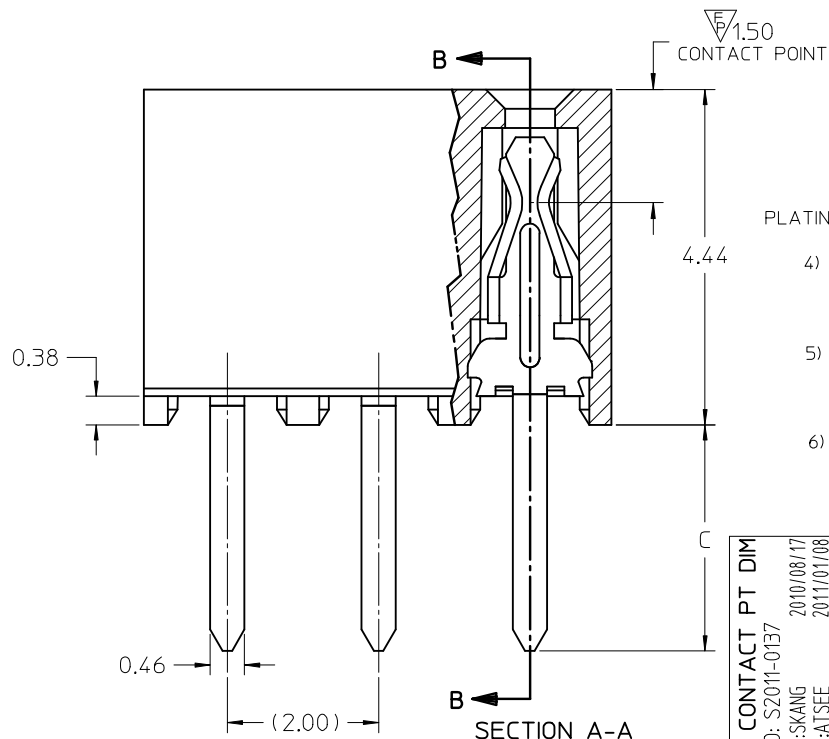


SECTION B-B



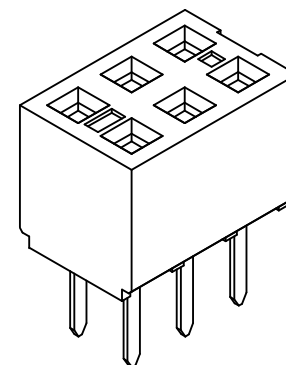
NOTES:

- 1) HOUSING MATERIAL: GLASS FILLED HIGH TEMP THERMOPLASTIC, COLOR: BLACK
- 2) TERMINAL MATERIAL: PHOSPHOR BRONZE
- 3) SEE SHT 2 FOR CKT SIZE, PART NUMBERS AND OVERALL DIMENSIONS, SEE SHT 3 FOR VOIDS.
- 4) FOR ILLUSTRATION, 6 CKT ASSY SHOWN.
- 5) REFER TO PRODUCT SPEC PS-79107
- 6) PACKAGING PER PK-70873-0180
- 7) CKTS NUMBERED FROM LEFT TO RIGHT WHEN PART IS VIEWED FROM TOP WITH RECESS ON THE RIGHT AS SHOWN.
- 8) SOLDER TAIL TO BE MEASURED BY PITCH GAUGE.



PLATING OPTION:

- 4) - 30u"/0.76um MIN GOLD PLATE IN SELECTED AREA
75u"/1.90um MIN TIN PLATE IN SELECTED AREA
BOTH OVER 50u"/1.25um MIN NICKEL OVERALL
- 5) - 15u"/0.38um MIN GOLD PLATE IN SELECTED AREA
75u"/1.90um MIN TIN PLATE IN SELECTED AREA
BOTH OVER 50u"/1.25um MIN NICKEL OVERALL
- 6) - 2u"/0.05um MIN GOLD PLATE IN SELECTED AREA
40u"/1.02um MIN TIN PLATE IN SELECTED AREA
BOTH OVER 40u"/1.02um MIN NICKEL OVERALL



ADD CONTACT PT DIM		QUALITY SYMBOLS		GENERAL TOLERANCES (UNLESS SPECIFIED)		DIMENSION STYLE		SCALE		DESIGN UNITS		THIRD ANGLE PROJECTION	
EC NO: S2011-0137		DESCRIPTION		mm		MM ONLY		NTS		METRIC		DATE	
2010/08/17		DRWN:SKANG		F _A =0		DRAWN BY		DATE		TITLE		1989/05/15	
2011/01/08		CHKD:ATSEE		F _B =0		CHECKED BY		DATE		2MM DUAL ROW		1989/05/15	
2011/01/10		APPR:MLONG		F _C =1		APPROVED BY		DATE		VERTICAL RECEPTACLE T/H		1989/05/15	
H2		REV		ANGULAR ±1/2°		WAZ		DATE		MOLEX INCORPORATED		1989/05/15	
				DRAFT WHERE APPLICABLE MUST REMAIN WITHIN DIMENSIONS		MATERIAL NO.		DOCUMENT NO.		SDA-79107-****		SHEET NO.	
						SIZE		THIS DRAWING CONTAINS INFORMATION THAT IS PROPRIETARY TO MOLEX INCORPORATED AND SHOULD NOT BE USED WITHOUT WRITTEN PERMISSION				1 OF 3	

10		9		8		7		6		5		4		3		2		1		
			P.C.TAIL DIMENSION 'C' = 3.00									P.C.TAIL DIMENSION 'C' = 1.91								
CKT SIZE	DIM 'A'	DIM 'B'	PLATING OPTION 5		PLATING OPTION 4		PLATING OPTION 6		PLATING OPTION 5		PLATING OPTION 4		PLATING OPTION 6							
			ITEM NO.		ITEM NO.		ITEM NO.		ITEM NO.		ITEM NO.		ITEM NO.							
04	(4.19)	(2.00)		79107-7001		79107-7051	X	79107-7126		79107-7201		79107-7251	X	79107-7326						
06	(6.19)	(4.00)		79107-7002		79107-7052	X	79107-7127		79107-7202		79107-7252	X	79107-7327						
08	(8.19)	(6.00)		79107-7003		79107-7053	X	79107-7128		79107-7203		79107-7253	X	79107-7328						
10	(10.19)	(8.00)		79107-7004		79107-7054	X	79107-7129		79107-7204		79107-7254	X	79107-7329						
12	(12.19)	(10.00)		79107-7005		79107-7055		79107-7130		79107-7205		79107-7255		79107-7330						
14	(14.19)	(12.00)		79107-7006		79107-7056	X	79107-7131		79107-7206		79107-7256	X	79107-7331						
16	(16.19)	(14.00)		79107-7007		79107-7057	X	79107-7132		79107-7207		79107-7257	X	79107-7332						
18	(18.19)	(16.00)		79107-7008		79107-7058	X	79107-7133		79107-7208		79107-7258	X	79107-7333						
20	(20.19)	(18.00)		79107-7009		79107-7059	X	79107-7134		79107-7209		79107-7259	X	79107-7334						
22	(22.19)	(20.00)		79107-7010		79107-7060	X	79107-7135		79107-7210		79107-7260	X	79107-7335						
24	(24.19)	(22.00)		79107-7011		79107-7061	X	79107-7136		79107-7211		79107-7261	X	79107-7336						
26	(26.19)	(24.00)		79107-7012		79107-7062	X	79107-7137		79107-7212		79107-7262	X	79107-7337						
28	(28.19)	(26.00)		79107-7013		79107-7063	X	79107-7138		79107-7213		79107-7263	X	79107-7338						
30	(30.19)	(28.00)		79107-7014		79107-7064	X	79107-7139		79107-7214		79107-7264	X	79107-7339						
32	(32.19)	(30.00)		79107-7015		79107-7065	X	79107-7140		79107-7215		79107-7265	X	79107-7340						
34	(34.19)	(32.00)		79107-7016		79107-7066	X	79107-7141		79107-7216		79107-7266	X	79107-7341						
36	(36.19)	(34.00)		79107-7017		79107-7067	X	79107-7142		79107-7217		79107-7267	X	79107-7342						
38	(38.19)	(36.00)		79107-7018		79107-7068	X	79107-7143		79107-7218		79107-7268	X	79107-7343						
40	(40.19)	(38.00)		79107-7019		79107-7069	X	79107-7144		79107-7219		79107-7269	X	79107-7344						
42	(42.19)	(40.00)		79107-7020		79107-7070	X	79107-7145		79107-7220		79107-7270	X	79107-7345						
44	(44.19)	(42.00)		79107-7021		79107-7071	X	79107-7146		79107-7221		79107-7271	X	79107-7346						
46	(46.19)	(44.00)		79107-7022		79107-7072	X	79107-7147		79107-7222		79107-7272	X	79107-7347						
48	(48.19)	(46.00)		79107-7023		79107-7073	X	79107-7148		79107-7223		79107-7273	X	79107-7348						
50	(50.19)	(48.00)		79107-7024		79107-7074	X	79107-7149		79107-7224		79107-7274	X	79107-7349						

"X" - DENOTES THE ITEM IS NOT AVAILABLE CURRENTLY.

ADD CONTACT PT DIM EC NO: S2011-0137 DRWN:SKANG CHKD:ATSEE APPR:MLONG	2010/08/17 2011/01/08 2011/01/10	DESCRIPTION	QUALITY SYMBOLS	GENERAL TOLERANCES (UNLESS SPECIFIED)		DIMENSION STYLE MM ONLY		SCALE NTS	DESIGN UNITS METRIC	THIRD ANGLE PROJECTION		
					mm	INCH	DRAWN BY DATE		TITLE 2MM DUAL ROW VERTICAL RECEPTACLE T/H			
				4 PLACES	± ---	± ---	AAB	1989/05/15				
				3 PLACES	± ---	± ---	CHECKED BY DATE					
H2	REV		 	2 PLACES	± 0.25	± ---	MJM	1989/05/15	MOLEX MOLEX INCORPORATED			
				1 PLACE	± ---	± ---	APPROVED BY DATE					
				ANGULAR ±1/2°			WAZ	1989/05/15	DOCUMENT NO.		SHEET NO.	
DRAFT WHERE APPLICABLE MUST REMAIN WITHIN DIMENSIONS				MATERIAL NO.		SEE TABLE		SDA-79107-****		2 OF 3		
				SIZE A3		THIS DRAWING CONTAINS INFORMATION THAT IS PROPRIETARY TO MOLEX INCORPORATED AND SHOULD NOT BE USED WITHOUT WRITTEN PERMISSION						

MOLDED VOID OPTION

ASSEMBLIES WITHOUT PEGS

CKT. SIZE	ASSEMBLY	VOID LOCATION(S) SEE SHEET 1 FOR CONVENTION		PLATING OPTION	DIM. "A"	DIM. "B"	P.C. TAIL DIM. "C"
	ITEM NO.	ROW	CKT. NO.(s)				
24	79107-5101	ROW B	6	5	(24.19)	(22.00)	(3.00)
10	79107-5102	ROW A	5	5	(10.19)	(8.00)	(3.00)
26	79107-5103	ROW B	5	5	(26.19)	(24.00)	(3.00)
20	79107-5104	ROW A	7	5	(20.19)	(18.00)	(1.91)
24	79107-5105	ROW B	10	5	(24.19)	(22.00)	(1.91)
20	79107-5106	ROW A	7	5	(20.19)	(18.00)	(3.00)
24	79107-5107	ROW B	10	5	(24.19)	(22.00)	(3.00)

"X" - DENOTES THE ITEM IS NOT AVAILABLE CURRENTLY.

NOTES

- TERMINALS WILL BE PRESENT IN VOIDED LOCATIONS HOWEVER, PIN WINDOWS WILL BE CLOSED.
- VOIDS CANNOT BE PRESENT IN BOTH ROWS ON A CONNECTOR.

<div>ADD CONTACT PT DIM</div> <div>EC NO: S2011-0137</div> <div>DRWN:SKANG</div> <div>CHKD:ATSEE</div> <div>APPR:MLONG</div> <div>REV</div> <div>H2</div>	<div>2010/08/17</div> <div>2011/01/08</div> <div>2011/01/10</div>	<div>QUALITY SYMBOLS</div> <div> <div> <div>F_A</div> <div>=0</div> </div> <div> <div>F_G</div> <div>=0</div> </div> <div> <div>F_P</div> <div>=0</div> </div> </div>	<div>GENERAL TOLERANCES (UNLESS SPECIFIED)</div> <table> <tr> <td></td> <td>mm</td> <td>INCH</td> </tr> <tr> <td>4 PLACES</td> <td>± ---</td> <td>± ---</td> </tr> <tr> <td>3 PLACES</td> <td>± ---</td> <td>± ---</td> </tr> <tr> <td>2 PLACES</td> <td>± 0.25</td> <td>± ---</td> </tr> <tr> <td>1 PLACE</td> <td>± ---</td> <td>± ---</td> </tr> <tr> <td colspan="3">ANGULAR ±1/2°</td> </tr> </table>		mm	INCH	4 PLACES	± ---	± ---	3 PLACES	± ---	± ---	2 PLACES	± 0.25	± ---	1 PLACE	± ---	± ---	ANGULAR ±1/2°			<div>DIMENSION STYLE</div> <div>MM ONLY</div>	<div>SCALE</div> <div>NTS</div>	<div>DESIGN UNITS</div> <div>METRIC</div>	<div>THIRD ANGLE PROJECTION</div>	<div>TITLE</div> <div>2MM DUAL ROW VERTICAL RECEPTACLE T/H</div>
		mm	INCH																							
	4 PLACES	± ---	± ---																							
	3 PLACES	± ---	± ---																							
	2 PLACES	± 0.25	± ---																							
1 PLACE	± ---	± ---																								
ANGULAR ±1/2°																										
			<div>DRAWN BY</div> <div>AAB</div>	<div>DATE</div> <div>1989/05/15</div>	<div>MOLEX MOLEX INCORPORATED</div>																					
			<div>CHECKED BY</div> <div>MJM</div>	<div>DATE</div> <div>1989/05/15</div>																						
			<div>APPROVED BY</div> <div>WAZ</div>	<div>DATE</div> <div>1989/05/15</div>	<div>SDA-79107-****</div>																					
			<div>MATERIAL NO.</div> <div>SEE TABLE</div>	<div>DOCUMENT NO.</div>																						
			<div>DRAFT WHERE APPLICABLE MUST REMAIN WITHIN DIMENSIONS</div>	<div>SIZE</div> <div>A3</div>	<div>THIS DRAWING CONTAINS INFORMATION THAT IS PROPRIETARY TO MOLEX INCORPORATED AND SHOULD NOT BE USED WITHOUT WRITTEN PERMISSION</div>																					

Mouser Electronics

Authorized Distributor

Click to View Pricing, Inventory, Delivery & Lifecycle Information:

Molex:

79107-7068