

4

3

2

1

THIS DRAWING IS UNPUBLISHED.

RELEASED FOR PUBLICATION

© COPYRIGHT

ALL RIGHTS RESERVED.

LOC

DIST


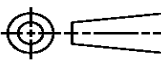
REVISIONS

P	LTR	DESCRIPTION	DATE	DWN	APVD
	H1	ECR-14-001606	06FEB2014	GK	HMR

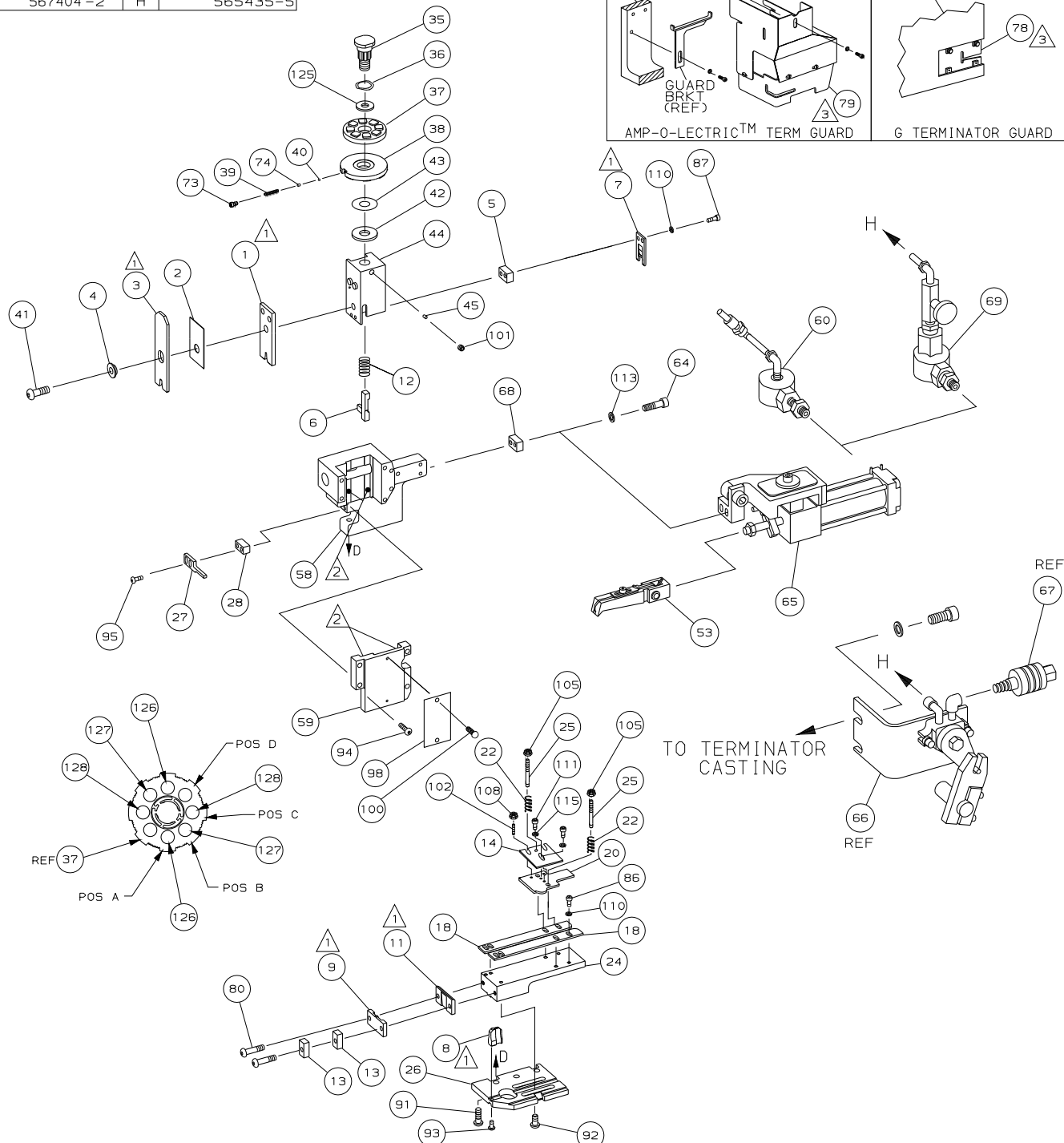
REPLACED BY OCEAN STYLE APPLICATOR PART
NUMBER 2150090-2

FOR REPLACEMENT PARTS FOR APPLICATOR 567404
REFER TO ADDITIONAL PAGE(S). SPARE PARTS KIT (IF LISTED)
WILL REMAIN AVAILABLE.

THE REPLACEMENT OCEAN STYLE APPLICATOR HAS THE
SAME TERMINATOR/PRESS INTERFACE AS APPLICATOR
567404

THIS DRAWING IS A CONTROLLED DOCUMENT.		DWN	GOPALAKRISHNA HV		 TE Connectivity		
		CHK	RAGHAVENDRA				
DIMENSIONS:		TOLERANCES UNLESS OTHERWISE SPECIFIED:		APVD	RAGHAVENDRA		
		0 PLC ±		NAME END FEED HDM APPLICATOR			
		1 PLC ±					
		2 PLC ±					
		3 PLC ±					
4 PLC ±		4 PLC ±		SIZE A 3			
ANGLES ±		FINISH					CAGE CODE
MATERIAL				DRAWING NO		RESTRICTED TO	
				C= 567404			
CUSTOMER ACCESSIBLE PRODUCTION DRAWING				SCALE		SHEET 1 OF 2	
						REV H1	

PART NUMBER	REV	FIRST USED
567404 -1	H	122500-1
567404 -2	H	565435-5



- 1 RECOMMENDED SPARE PARTS.
- 2 GREASE LIGHTLY.
- 3 GUARD MUST BE IN PLACE WHEN OPERATING APPLICATOR IN A BENCH MACHINE.
- 4 SEE DRAWING FOR COMPONENTS
- 5 ITEM 78 REQUIRED FOR G TERMINATOR ONLY.

567404 ↕ 567404

TERMINAL NAME: .250 SERIES POS LOCK (MARK II) RECEPTACLE									
		170327		CRIMPING DATA					
				PAD LTR	CRIMP HEIGHT			WIRE SIZE	
				A	.063 ±.002 [1.61 ±0.05mm]			18	
				B	.058 ±.002 [1.47 ±0.05mm]			20	
				C	.056 ±.002 [1.41 ±0.05mm]			22	
				D	NOT			USED	
				CRIMP	SIZE		TYPE	RANGE	
				WIRE	.080 [2.03mm]		F	22-18	
				INSUL	.140 [3.56mm]		F	.059-.122	
WIRE STRIP LENGTH .217-.254		TERM APPL SPEC 114-5042		FEED 1.036	APPL INSTRUCTION 408-8039		SET UP GAGE 458638-1	LAYOUT L1411	

2	2	-	C	1-354779-0	PIN, WIRE DISC (.3040)C	128
2	2	-	C	354779-6	PIN, WIRE DISC (.3020)B	127
2	2	-	C	9-354778-5	PIN, WIRE DISC (.2970)A	126
1	1	-	A	986950-1	WASHER, FLAT PRECISION	125
						124
						123
						122
						121
						120
						119
						118
						117
						116
2	2	-	A	21024-3	WASHER, LOCK (NO.6) DRAG	115
						114
2	2	-	A	21024-5	WASHER, LOCK (NO.10) AIR ASSY	113
						112
2	2	-	A	1-21000-8	SCR, SHC (6-32x.25) SLUG BLADE	111
6	6	-	A	21024-4	WASHER, LOCK (NO.8) SHEAR BL	110
						109
2	2	-	A	21018-4	NUT, HEX (4-40) DRAG	108
						107
						106
2	2	-	A	21022-2	NUT, HEX SL (8-32) DRAG STUD	105
						104
						103
2	2	-	A	2-21006-6	SCR, SKT SET (4-40x.62) DRAG	102
1	1	-	A	21009-2	SCR, SKT SET (1/4-20x.25) RAM	101
2	2	-	A	21017-2	SCR, DRIVE (#2x.19) ID PLATE	100
						99
1	1	-	B	461264-1	PLATE, IDENTIFICATION	98
						97
						96
2	2	-	A	2-21002-2	SCR, BHC (8-32x.50) STRIPPER	95
4	4	-	A	2-21002-9	SCR, BHC (10-32x.75) CAP	94
1	1	-	A	22733-8	SCR, BHC (8-32x.38 LW) ANVIL	93
4	4	-	A	3-21002-3	SCR, BHC (1/4-20x.50) ST GD PL	92
3	3	-	A	2-22733-8	SCR, BHC (1/4-20x.62) HSG	91
						90
						89
						88
2	2	-	A	2-21000-9	SCR, SHC (8-32x.75) SLUG BLADE	87
3	3	-	A	2-21000-5	SCR, SHC (8-32x.25) STRIP GUIDE	86
						85
						84
						83
						82
						81
2	2	-	A	3-21002-0	SCR, BHC (10-32x.88) SHEAR PL	80
1	-	-	A	455750-8	GUARD ASSY	79
-	REF	-	A	679532-1	INSERT, GUARD	78
						77
						76
						75
1	1	-	A	690603-1	SPRING, ASSIST	74
1	1	-	A	23030-1	SCR, SKT CAP (6-32x.25) CP DSC	73
						72
						71
						70
						69
						68
						67
						66
						65
						64
						63
						62
						61
						60
						59
						58
						57
						56
						55
						54
						53
						52
						51
						50
						49
						48
						47
						46
						45
						44
						43
						42
						41
						40

-1	LEADMAKER			AIRFEED			567404
-2	BENCH MODEL G			AIRFEED			
	BENCH MODEL K			AIRFEED			
							70
	1	-	-	C	692655-5	AIR FEED VALVE ASSY	69
	1	1	-	A	461690-1	SPACER, AIR FEED	68
	REF	-	-	A	24042-2	VALVE, SHUT OFF	67
	REF	-	-	C	692655-6	AIR FEED VALVE ASSY	66
	1	1	-	B	2-460277-7	AIR FEED ASSY	65
	2	2	-	A	4-21000-3	SCR,5HC 10-32X2.00 AIR ASSY	64
							63
							62
							61
	-	1	-	A	692655-7	AIR FEED VALVE ASSY.	60
	1	1	-	C	454220-1	CAP, RAM	59
	1	1	-	D	453736-1	HOUSING	58
							57
							56
							55
							54
	1	1	-	B	2-460680-6	FEED FINGER ASSY	53
							52
							51
							50
							49
							48
							47
							46
	1	1	-	A	690191-1	PLUG, NYLON	45
	1	1	-	C	455674-1	RAM	44
	1	1	-	A	690125-1	WASHER, LAMINATED	43
	1	1	-	A	690124-1	WASHER, RAM	42
	1	1	-	A	7-21002-9	BOLT, CRIMPER (5/16-24x1.00)	41
	1	1	-	A	23241-6	BALL, STEEL	40
	1	1	-	A	690170-1	SPRING, COMPRESSION	39
	1	1	-	C	690142-1	DISC, INSULATION	38
	1	1	-	D	354777-1	WIRE DISC, PLASTIC	37
	1	1	-	A	22480-5	WASHER, SPRING	36
	1	1	-	B	690212-1	POST, RAM	35
							34
							33
							32
							31
							30
							29
	1	1	-	B	3-690451-2	SPACER, STRIPPER	28
	1	1	-	A	240639-1	STRIPPER	27
	1	1	-	D	455676-1	PLATE, BASE	26
	2	2	-	A	22354-8	DRAG, STUD	25
	1	1	-	B	804823-4	PLATE, STRIP GUIDE	24
							23
	2	2	-	A	4-22281-1	SPRING, DRAG	22
							21
	1	1	-	A	814130-2	DRAG, STOCK	20
							19
	2	2	-	C	454204-2	GUIDE, STRIP (FRONT)	18
							17
							16
							15
	1	1	-	C	683875-1	PLATE, DRAG LOCATOR	14
	2	2	-	C	690481-2	SPACER, HOLD DOWN	13
	1	1	-	A	23846-1	SPRING, HOLD DOWN	12
	1	1	-	B	240833-1	PLATE, REAR SHEAR	11
							10
	1	1	-	B	690482-4	PLATE, FRONT SHEAR	9
	1	1	-	D	5-683452-9	ANVIL	8
	1	1	-	B	690474-4	BLADE, SLUG	7
	1	1	-	D	2-455892-6	HOLD DOWN, TERMINAL	6
	1	1	-	C	6-240641-0	SPACER, SLUG BLADE	5
	1	1	-	B	238009-1	SPACER, BLOCK CRIMPER	4
	1	1	-	C	6-683453-9	CRIMPER, INSULATION	3
	1	1	-	B	455888-7	SPACER, CRIMPER	2
	1	1	-	C	456419-5	CRIMPER, WIRE	1
	-2	-1	U/M	DWG SIZE	PART NO	DESCRIPTION	ITEM NO
REVISION OF EACH ASSY NO (WHEN BLANK, USE DWG REVISION)							
QTY REQD PER ASSY				PARTS LIST			
DIMENSIONS IN INCHES. DO NOT SCALE PRINT.				MTRL - HT TR - FIN -			

Mouser Electronics

Authorized Distributor

Click to View Pricing, Inventory, Delivery & Lifecycle Information:

[TE Connectivity:](#)

[567404-1](#)