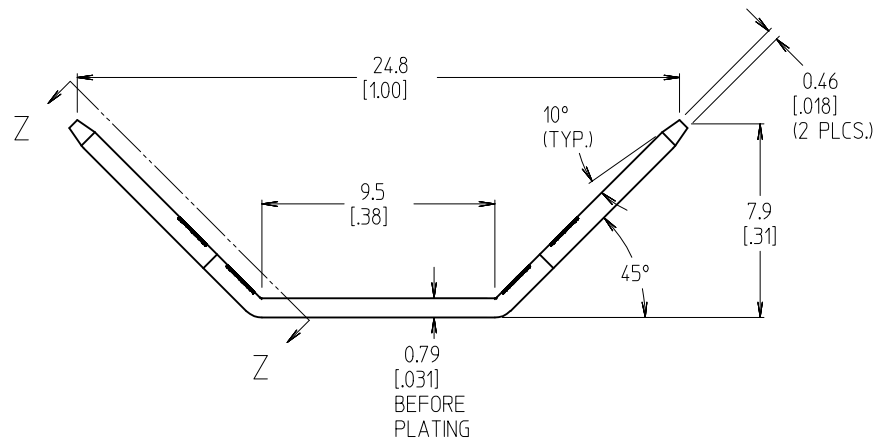
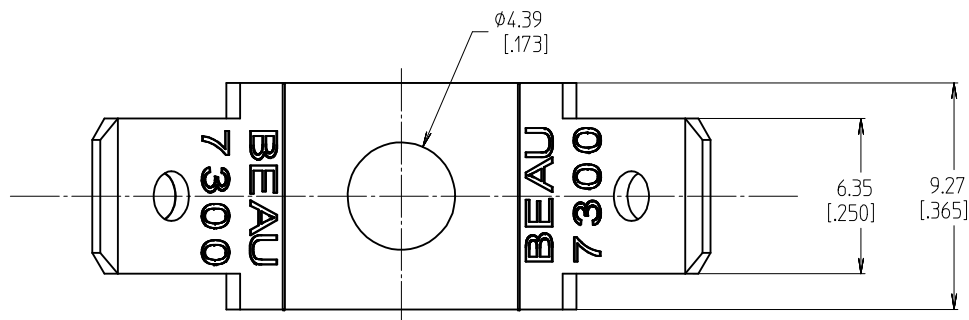
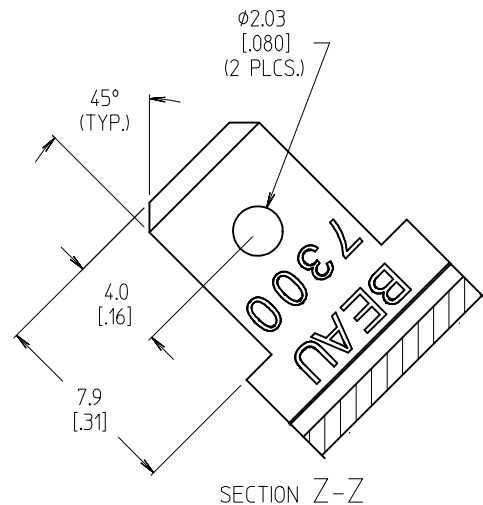


10 9 8 7 6 5 4 3 2 1



NOTES:

1. MATERIAL: BRASS
2. FINISH: TIN PLATE
3. INCH DIMENSIONS SHOWN IN BRACKETS [XXX].
4. PART IS ROHS COMPLIANT.

INITIAL RELEASE EC NO: WNA2009-0043 DRAWN: C. YORK 2008/09/22 CHKD: R. DEROSS 2008/09/22 APPR: R. DEROSS 2008/09/23 A	DESCRIPTION REV	QUALITY SYMBOLS ▽=0 ▽=0	GENERAL TOLERANCES (UNLESS SPECIFIED)		DIMENSION STYLE MM/IN		SCALE 1:1	DESIGN UNITS INCH	THIRD ANGLE PROJECTION ⊙ □
				mm	INCH	DRAWN BY C. YORK	DATE 2006/03/29	TITLE TERMINAL, FT, SL SL, CATALOG# 7311	
			4 PLACES	± ---	± .0015	CHECKED BY R. DEROSS	DATE 2006/03/29		
			3 PLACES	± 0.038	± .005	APPROVED BY R. DEROSS	DATE 2006/03/29		
			2 PLACES	± 0.13	± .01	MOLEX MOLEX INCORPORATED			
			1 PLACE	± 0.3	± ---				
			ANGULAR ± 2 °			MATERIAL NO. 380021335	DOCUMENT NO. SD-38002-044	SHEET NO. 1 OF 1	
			DRAFT WHERE APPLICABLE MUST REMAIN WITHIN DIMENSIONS			THIS DRAWING CONTAINS INFORMATION THAT IS PROPRIETARY TO MOLEX INCORPORATED AND SHOULD NOT BE USED WITHOUT WRITTEN PERMISSION			

9 8 7 6 5 4 3 2 1

# Mouser Electronics

Authorized Distributor

Click to View Pricing, Inventory, Delivery & Lifecycle Information:

Molex:

38002-1335