

## JULIA-A

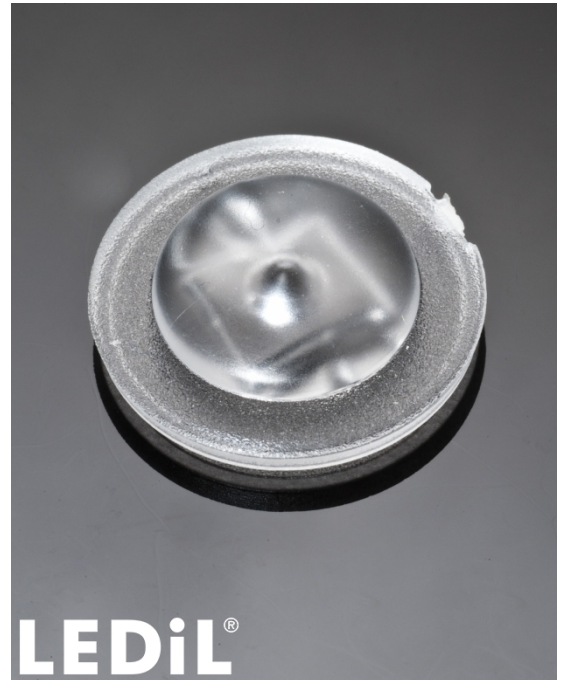
~90° + 160° wide beam. Assembly with installation tape.

### TECHNICAL SPECIFICATIONS:

Dimensions	Ø 18.8 mm
Height	4.8 mm
Fastening	tape, pin
ROHS compliant	yes ⓘ

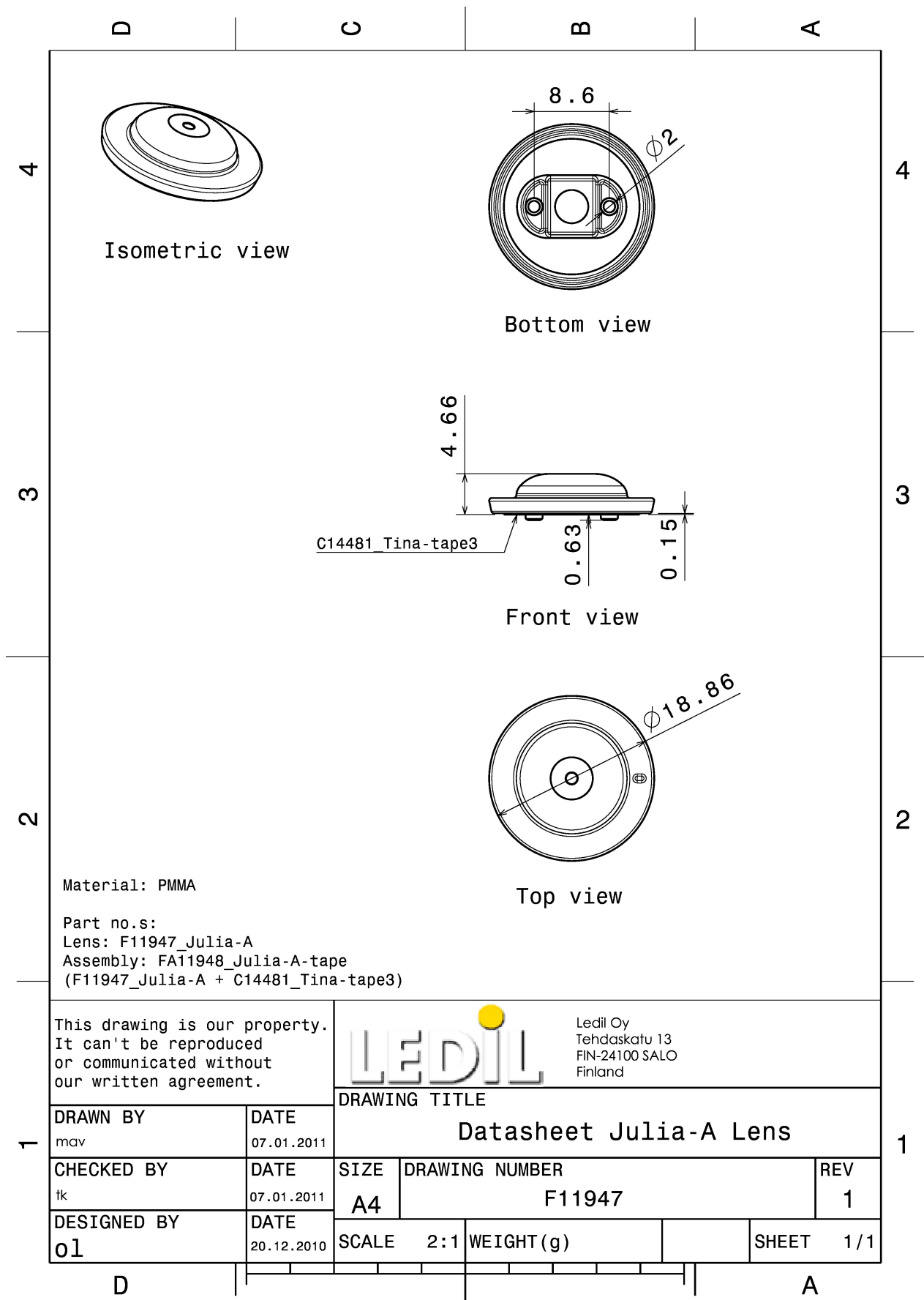
### MATERIAL SPECIFICATIONS:

Component	Type	Material	Colour	Finish
JULIA-A	Single lens	PMMA	clear	
TINA-TAPE3	Tape	PU tape		



### ORDERING INFORMATION:

Component		Qty in box	MOQ	MPQ	Box weight (kg)
FA11948_JULIA-A	Single lens	2850	300	150	3.7
» Box size:					



### PHOTOMETRIC DATA (MEASURED):

#### CREE

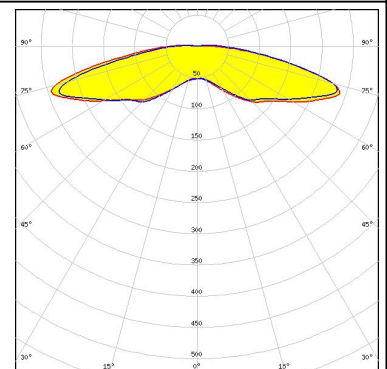
LED XP-E  
FWHM 164.0°  
Efficiency 90 %  
Peak intensity 0.240 cd/lm  
LEDs/each optic 1  
Light colour White  
Required components:

#### CREE

LED XP-G  
FWHM 166.0°  
Efficiency 90 %  
Peak intensity 0.210 cd/lm  
LEDs/each optic 1  
Light colour White  
Required components:

#### CREE

LED XP-G3  
FWHM 166.0°  
Efficiency 85 %  
Peak intensity 0.240 cd/lm  
LEDs/each optic 1  
Light colour White  
Required components:



#### LUMILEDS

LED LUXEON Rebel  
FWHM 154.0°  
Efficiency 90 %  
Peak intensity 0.260 cd/lm  
LEDs/each optic 1  
Light colour White  
Required components:

### PHOTOMETRIC DATA (MEASURED):

#### LUMILEDS

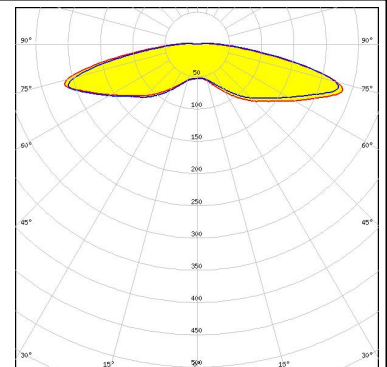
LED LUXEON Rebel ES  
FWHM 163.0°  
Efficiency 90 %  
Peak intensity 0.240 cd/lm  
LEDs/each optic 1  
Light colour White  
Required components:

#### NICHIA

LED NCSxx19A  
FWHM 156.0°  
Efficiency 90 %  
Peak intensity 0.240 cd/lm  
LEDs/each optic 1  
Light colour White  
Required components:

#### NICHIA

LED NVSW219F  
FWHM 166.0°  
Efficiency 82 %  
Peak intensity 0.240 cd/lm  
LEDs/each optic 1  
Light colour White  
Required components:



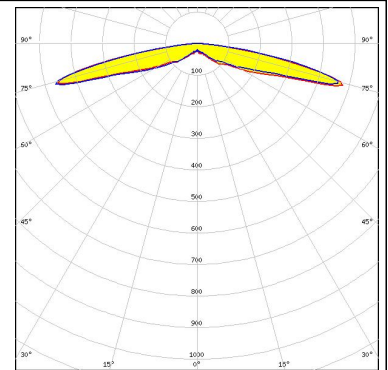
#### NICHIA

LED NVSxx19A  
FWHM 159.0°  
Efficiency 90 %  
Peak intensity 0.240 cd/lm  
LEDs/each optic 1  
Light colour White  
Required components:

### PHOTOMETRIC DATA (MEASURED):

#### OSRAM Opto Semiconductors

LED OSLON SSL 150  
FWHM 159.0°  
Efficiency 90 %  
Peak intensity 0.300 cd/lm  
LEDs/each optic 1  
Light colour White  
Required components:

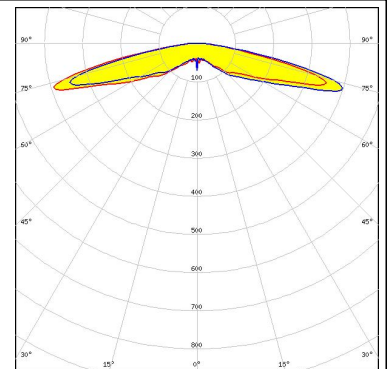


#### OSRAM Opto Semiconductors

LED OSLON SSL 80  
FWHM 158.0°  
Efficiency 90 %  
Peak intensity 0.200 cd/lm  
LEDs/each optic 1  
Light colour White  
Required components:

#### SEOL SEOUL SEMICONDUCTOR

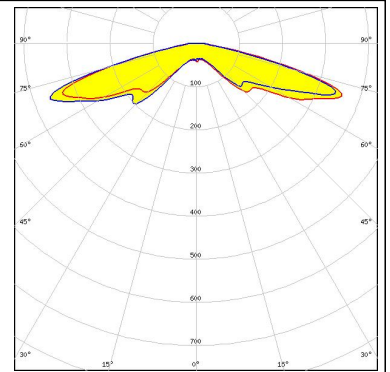
LED Z5  
FWHM 160.0°  
Efficiency 86 %  
Peak intensity 0.240 cd/lm  
LEDs/each optic 1  
Light colour White  
Required components:



### PHOTOMETRIC DATA (SIMULATED):

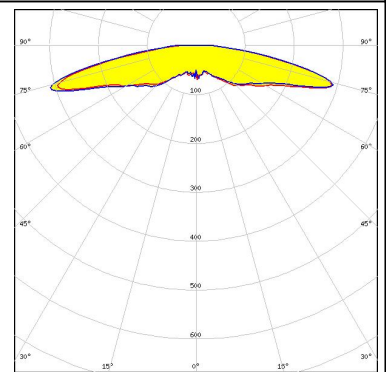
**CREE** 

LED J Series 3030  
FWHM 153.0°  
Efficiency 93 %  
Peak intensity 0.370 cd/lm  
LEDs/each optic 1  
Light colour White  
Required components:



**CREE** 

LED XP-G2 HE  
FWHM 162.0°  
Efficiency 89 %  
Peak intensity 0.310 cd/lm  
LEDs/each optic 1  
Light colour White  
Required components:



### GENERAL INFORMATION:

NOTE: The typical beam angle will be changed by different color, chip size and chip position tolerance. The typical total beam angle is the full angle measured where the luminous intensity is half of the peak value.

### MATERIALS:

As part of our continuous research and improvement processes, and to ensure the best possible quality and availability of our products, LEDiL reserves the right to change material grades without notice.

### PRODUCT DATA USER AGREEMENT AND DISCLAIMER:

The measured data in the provided downloadable LEDiL Product Datasheets and Mechanical 2D-Drawings is rounded and provided as reference for planning. LEDiL Oy's optical specifications have been verified by conducting performance testing of the products in accordance with the company's quality system. The reported data are averaged results of multiple measurements with typical variation. LEDiL Oy reserves the right to without prior notification make changes and improvements to its products.

LEDiL Oy assumes neither warranty, nor guarantee nor any other liability of any kind for the contents and correctness of the provided data. The provided data has been generated with highest diligence but the provided data may in reality not represent the complete possible variation range of all intrinsic parameters. Therefore, in certain cases a deviation from the provided data could occur.

LEDiL Oy reserves the right to undertake technical changes of its products without further notification which could lead to changes in the provided data. LEDiL Oy assumes no liability of any kind for the possible deviation from any provided data or any other damage resulting from the usage of the provided data.

The user agrees to this disclaimer and user agreement with the download or usage of the provided files.

#### LEDiL Oy

Joensuunkatu 13  
FI-24240 SALO  
Finland

#### LEDiL Inc.

228 West Page Street  
Suite D  
Sycamore IL 60178  
USA

#### Local sales and technical support

[www.ledil.com/  
where\\_to\\_buy](http://www.ledil.com/where_to_buy)

#### Shipping locations

Salo, Finland  
Hong Kong, China

#### Distribution Partners

[www.ledil.com/  
where\\_to\\_buy](http://www.ledil.com/where_to_buy)

# Mouser Electronics

Authorized Distributor

Click to View Pricing, Inventory, Delivery & Lifecycle Information:

[Ledi:](#)

[FA11948\\_JULIA-A](#)