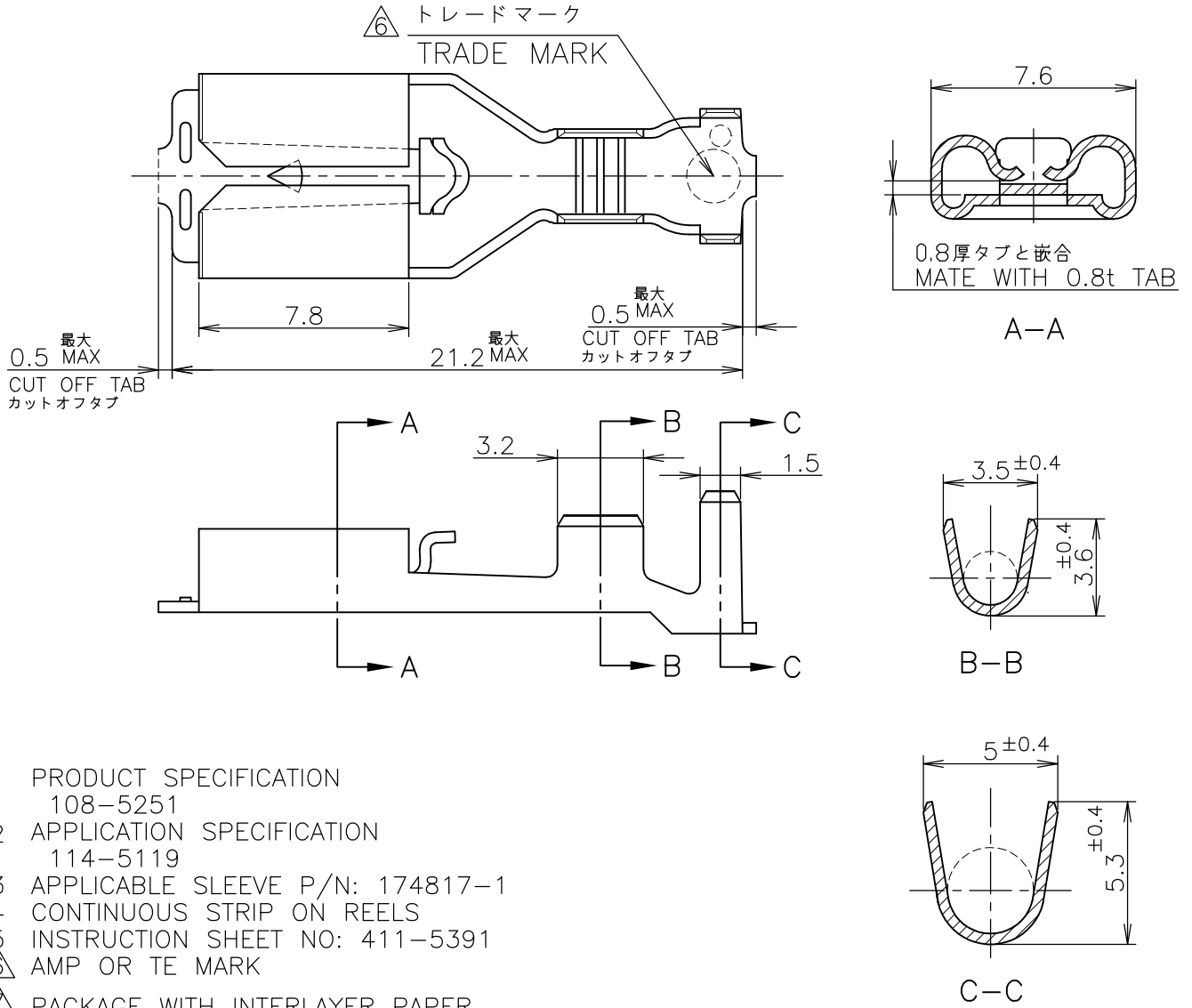


LOC J	DIST /	REVISIONS 変更			DATE	DWN	APVD
P	LTR	DESCRIPTION			18MAR16	HG	TD
	F2	REVISED PER ECR-16-003912					



911590-1	175023-1	PRE TINNED BRASS	①175022-2
911590-1	175023-1	PRE TINNED BRASS	175022-1
—++—	HAND TOOL NO.	L.P.NO.	MATERIAL
			P/N

WIRE RANGE 抱合電線断面積	AWG #18-#14 0.76~2.09 mm ²	INSULATION DIA 被覆外径	2.2~3.4 mmφ
-----------------------	--	------------------------	-------------

THIS DRAWING IS UNPUBLISHED. MAY, 1999. ALL RIGHTS RESERVED. COPYRIGHT 1999 By -

DIMENSIONS: 単位: 耗 mm	DWN Y.ABE 06SEP2010
TOLERANCES UNLESS OTHERWISE SPECIFIED: 一般公差	CHK T.TSUZAKI 06SEP2010
0 PLC ±	APVD T.MASUDA 06SEP2010
1 PLC ± 10 ≥: ±0.2	PRODUCT SPEC 製品規格 注1 参照
2 PLC ± 30 ≥ > 10: ±0.25	SEE NOTE 1
3 PLC ± 100 ≥ > 30: ±0.3	APPLICATION SPEC 取付適用規格 注2 参照
4 PLC ±	SEE NOTE 2
ANGLES ± 3'	WEIGHT

MATERIAL 材料 表参照 SEE TABLE		FINISH 仕上	
TE Connectivity			
NAME 250 SERIES POSITIVE LOCK-EX REC. 250 シリーズ ポジティブ ブロッカー-EX リセプタクル			
SIZE	CAGE CODE	DRAWING NO 番号	RESTRICTED TO
A4	00779	175022	
CUSTOMER DRAWING		SCALE 尺度 4:1	SHEET 1 OF 1 REV F2

Mouser Electronics

Authorized Distributor

Click to View Pricing, Inventory, Delivery & Lifecycle Information:

[TE Connectivity:](#)

[175022-1 \(MOUSER REEL\)](#)