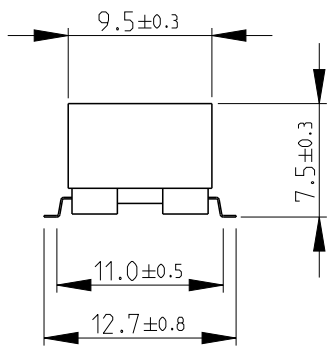
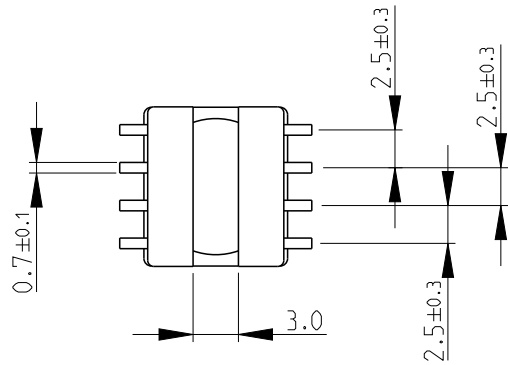
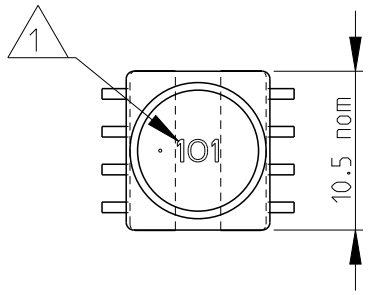
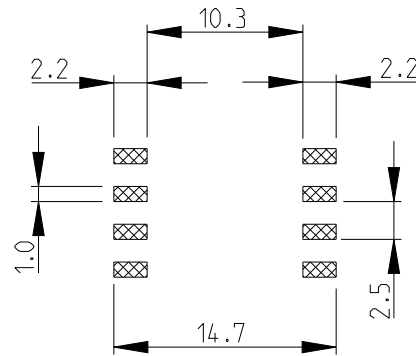


LOC	DIST	REVISIONS					
E	B	P	LTR	DESCRIPTION	DATE	DWN	APVD
		BA2	ECR-13-015529		04OCT2013	KR	TN

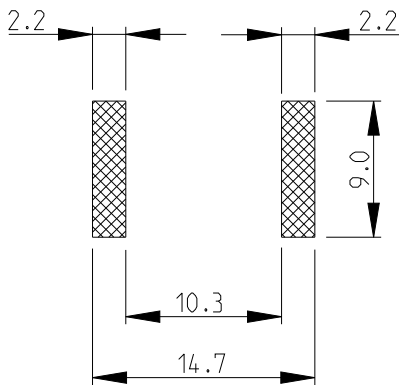


RECOMMENDED LAND PATTERN FOR INDUCTANCE VALUES 100 μH OR HIGHER



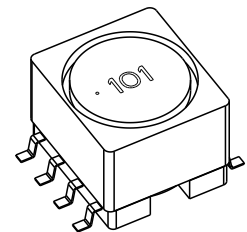
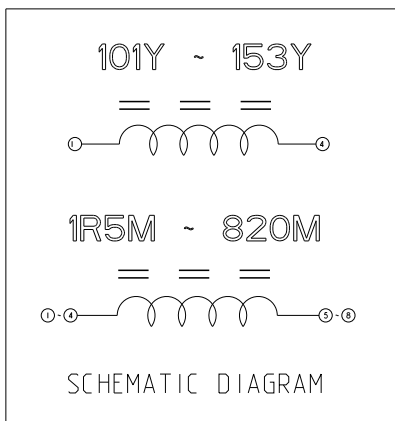
RoHS Compliant

RECOMMENDED LAND PATTERN FOR INDUCTANCE VALUES 1.5 μH - 82 μH



1 INDUCTANCE CODE

2 FOR FURTHER INFORMATION SEE DATA SHEET FOR 3632 SERIES-SHIELDED SMD POWER INDUCTORS



2008

RELEASED FOR PUBLICATION

ALL RIGHTS RESERVED.

THIS DRAWING IS UNPUBLISHED.

BY - COPYRIGHT 2008

DIMENSIONS: mm	DWN SUBHASH.M	03-Sep-08	MATERIAL	-	FINISH	-
	CHK PRAKASH.S	03-Sep-08				
TOLERANCES UNLESS OTHERWISE SPECIFIED:	APVD STEPHEN.P	03-Sep-08				
0 PLC ± 0.2	PRODUCT SPEC	-	NAME SHIELDED SMD POWER INDUCTOR SERIES 3632B			
1 PLC ± 0.1	-	-	SIZE	CAGE CODE	DRAWING NO	RESTRICTED TO
2 PLC ±	APPLICATION SPEC	-	A 4	00779	© = 1625813	-
3 PLC ±	-	-	Customer Drawing			
4 PLC ±	WEIGHT	-	SCALE	SHEET	OF	REV
ANGLES ± 5°	-	-	2:1	1	1	BA2

Mouser Electronics

Authorized Distributor

Click to View Pricing, Inventory, Delivery & Lifecycle Information:

[TE Connectivity:](#)

[3632B222LL](#)