

8

7

6

5

4

3

2

1

THIS DRAWING IS UNPUBLISHED.

RELEASED FOR PUBLICATION

ALL RIGHTS RESERVED.

LOCAD

DIST00

REVISONS

REV

DATE

DWN

APVD

PC

LTR

DESCRIPTION

DATE

DWN

APVD

A2

REVISED PER ECO-15-004048

17MAR2015

NK

RH

| Component name | Base material | Finish |
|---------------------------------------|--|--|
| Case | LCP, black, UL94 V-0 | |
| Terminal, wire lug (gold) | Brass | Gold over nickel |
| Terminal, PC, RA & VRA (gold) | Brass | Gold over nickel in contact area, Tin over nickel in solder area |
| Terminal, PC & wire lug (silver) | Silver clad copper | Silver over nickel |
| Contact (gold) | Copper alloy or brass | Gold over nickel |
| Contact (silver) | Silver clad copper or copper | Silver over nickel |
| Frame | Steel | Tin over copper |
| Spring | Music wire | |
| Plunger Button | Nylon 6/6, black, red or blue. UL94 HB (extended) or UL94V-2 (flush) | |
| Support bracket (RA*ES versions only) | Brass | Tin over copper |
| Support bracket, VRA | Steel | Tin over copper |
| Bushing | Brass | Nickel over copper |
| ES Housing (ES versions) | Nylon 6/6, natural, UL94 V-2 | |
| ES boot (ES versions) | Vinyl plastisol, black | |

| Specifications | |
|--------------------------------|---|
| Rating | Gold: .4VA max. @ 20VDC or peak AC resistive Silver: 1 A @ 125VAC or 28 VDC resistive |
| Initial termination resistance | 20 milliohms max. |
| Insulation resistance | 1,000 Megohms min @ 500 VDC |
| Dielectric strength | 1,000 volts RMS at sea lever |
| Timing | Break before make |
| Plunger travel | .030 |
| Actuation force | 50 to 400 grams |
| Life expectancy | .4 VA, 1 pole: 100,000 .4 VA, 2 poles: 80,000 1 A, 1 pole: 60,000 1 A, 2 poles: 50,000 |
| Operating temperature | -30° C to +65° C |
| Storage temperature | -30° C to +65° C |
| Terminal seal | Single pole: epoxy Double pole: epoxy optional |

| Model | Actuator | Poles | Rating | Function | Plating | Terminations | Process Seal | Button color | 04 |
|-------|------------------|---------|--------------------|--------------------|------------------|------------------------------|-----------------------|--------------|----|
| TPB | Blank = extended | 1 | 1 = Gold .4VA | C = SPST momentary | G = Gold | Blank = Wire lug | ES = process sealed 2 | 0 = Black | |
| | F = flush | 2 (1+1) | 3 = Silver 1 Amp 1 | F = SPDT momentary | Blank = Silver 1 | PC = printed circuit | | 2 = Red | |
| | | 2 | | M = DPST momentary | | RA = right angle 2 | | 6 = Blue | |
| | | | | R = DPDT momentary | | VRA = vertical right angle 3 | | | |

NOTES:
1. Silver only available in wire lug and pc terminations
2. RAES available with B and C bushing only
3. VRA only available in single pole

| P/N | Alco P/N | Flush Actuator? | Poles | Throws | Plating | Terminals | Process sealed? | Button Color | Function | | Connected Terminals | | Dim A |
|-------------|-----------------|-----------------|-------|--------|---------|-------------|-----------------|--------------|----------|------|---------------------|----------|-------|
| | | | | | | | | | ALCO | ALCO | ALCO | ALCO | |
| 1825097-1 | TPB11CGPC004 | no | 1 | 1 | Gold | PC | No | Black | Off | Mom | Off | 1-3 | .133 |
| 1825097-2 | TPB11CGPC204 | no | 1 | 1 | Gold | PC | No | Red | Off | Mom | Off | 1-3 | .133 |
| 1825097-3 | TPB11CGPCES004 | no | 1 | 1 | Gold | PC | yes | Black | Off | Mom | Off | 1-3 | .133 |
| 1825097-6 | TPB11CGRA004 | no | 1 | 1 | Gold | Right Angle | No | Black | Off | Mom | Off | 1-3 | .133 |
| 1825097-4 | TPB11CGRA204 | no | 1 | 1 | Gold | Right Angle | No | Red | Off | Mom | Off | 1-3 | .133 |
| 1825097-5 | TPB11CGRAES004 | no | 1 | 1 | Gold | Right Angle | yes | Black | Off | Mom | Off | 1-3 | .133 |
| 1825097-7 | TPB11CGRAES204 | no | 1 | 1 | Gold | Right Angle | yes | Red | Off | Mom | Off | 1-3 | .133 |
| 1825097-8 | TPB11CGVRA004 | no | 1 | 1 | Gold | VRA | No | Black | Off | Mom | Off | 1-3 | .117 |
| 1825097-9 | TPB11FGPC004 | no | 1 | 2 | Gold | PC | No | Black | On | Mom | 1-2 | 2-3 | .133 |
| 1-1825097-0 | TPB11FGPCES204 | no | 1 | 2 | Gold | PC | yes | Red | On | Mom | 1-2 | 2-3 | .133 |
| 1-1825097-1 | TPB11FGRA004 | no | 1 | 2 | Gold | Right Angle | No | Black | On | Mom | 1-2 | 2-3 | .133 |
| 1-1825097-2 | TPB11FGRA204 | no | 1 | 2 | Gold | Right Angle | No | Red | On | Mom | 1-2 | 2-3 | .133 |
| 1-1825097-3 | TPB11FGRA604 | no | 1 | 2 | Gold | Right Angle | No | Blue | On | Mom | 1-2 | 2-3 | .133 |
| 1-1825097-4 | TPB11FGRAES004 | no | 1 | 2 | Gold | Right Angle | yes | Black | On | Mom | 1-2 | 2-3 | .133 |
| 1-1825097-5 | TPB11FGRAES604 | no | 1 | 2 | Gold | Right Angle | yes | Blue | On | Mom | 1-2 | 2-3 | .133 |
| 1-1825097-6 | TPB11FGVRA004 | no | 1 | 2 | Gold | VRA | No | Black | On | Mom | 1-2 | 2-3 | .117 |
| 1-1825097-7 | TPB21MGPC004 | no | 2 | 1 | Gold | PC | No | Black | Off | Mom | Off | 1-3, 4-6 | .133 |
| 1-1825097-8 | TPB21MGPC204 | no | 2 | 1 | Gold | PC | No | Red | Off | Mom | Off | 1-3, 4-6 | .133 |
| 2-1825097-8 | TPB21MGRA004 | no | 2 | 1 | Gold | Right Angle | No | Black | Off | Mom | Off | 1-3, 4-6 | .133 |
| 1-1825097-9 | TPB21RGRA004 | no | 2 | 2 | Gold | Right Angle | No | Black | On | Mom | 1-2, 4-5 | 2-3, 5-6 | .133 |
| 2-1825097-0 | TPBF11CGPCES004 | yes | 1 | 1 | Gold | PC | yes | Black | Off | Mom | Off | 1-3 | .000 |
| 2-1825097-1 | TPBF11CGRA004 | yes | 1 | 1 | Gold | Right Angle | No | Black | Off | Mom | Off | 1-3 | .000 |
| 2-1825097-2 | TPBF11CGRAES004 | yes | 1 | 1 | Gold | Right Angle | yes | Black | Off | Mom | Off | 1-3 | .000 |
| 2-1825097-3 | TPBF11FGPCES004 | yes | 1 | 2 | Gold | PC | yes | Black | On | Mom | 1-2 | 2-3 | .000 |
| 2-1825097-4 | TPBF11FGRA004 | yes | 1 | 2 | Gold | Right Angle | No | Black | On | Mom | 1-2 | 2-3 | .000 |
| 2-1825097-5 | TPBF11FGRA204 | yes | 1 | 2 | Gold | Right Angle | No | Red | On | Mom | 1-2 | 2-3 | .000 |
| 2-1825097-6 | TPBF11FGRAES004 | yes | 1 | 2 | Gold | Right Angle | yes | Black | On | Mom | 1-2 | 2-3 | .000 |

THIS DRAWING IS A CONTROLLED DOCUMENT.

DIMENSIONS: INCHES

TOLERANCES UNLESS OTHERWISE SPECIFIED:

0 PLC ± .010

1 PLC ± .010

2 PLC ± .010

3 PLC ± .010

4 PLC ± .010

ANGLES

MATERIAL

FINISH

DWN M.BINNER 20JUL05

CHK M.ZITTO 21JUL05

APVD M.ZITTO 21JUL05

PRODUCT SPEC

APPLICATION SPEC

WEIGHT

CUSTOMER DRAWING

TE Connectivity

PUSHBUTTON SWITCH, TPB SERIES

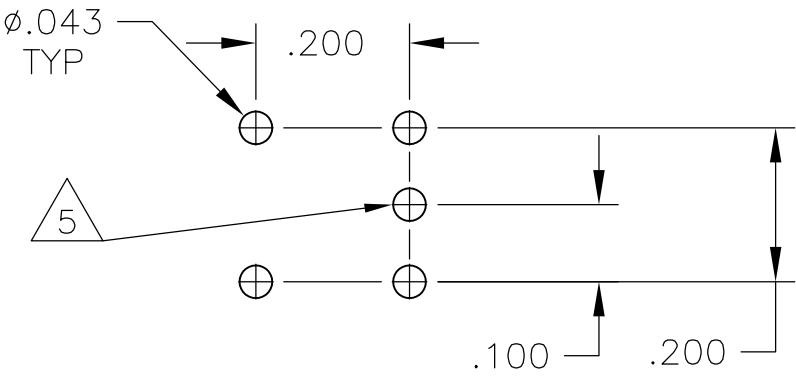
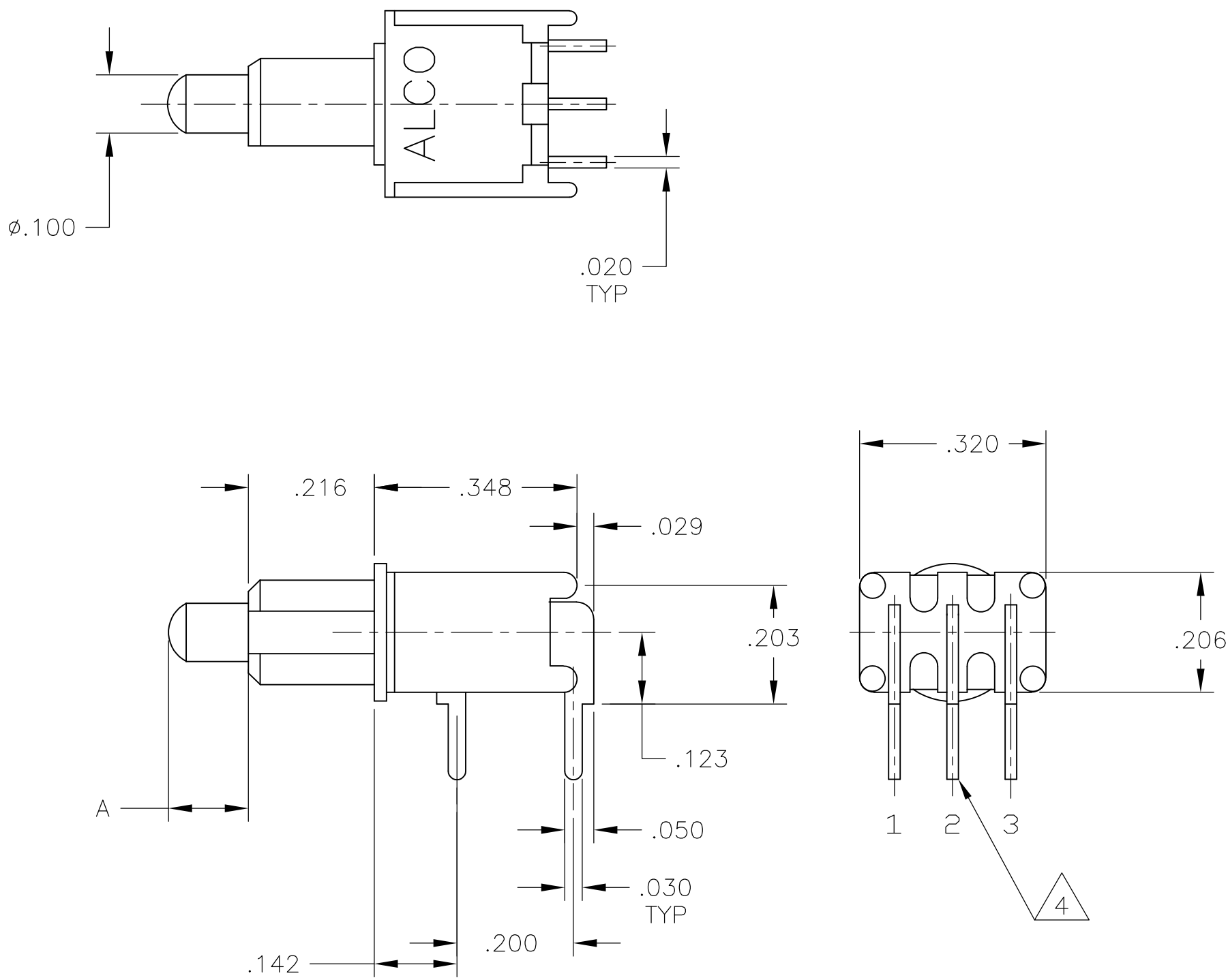
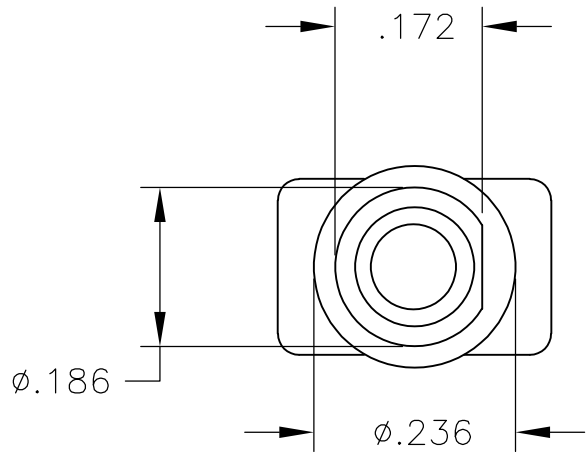
SIZE CAGE CODE DRAWING NO

RESTRICTED TO

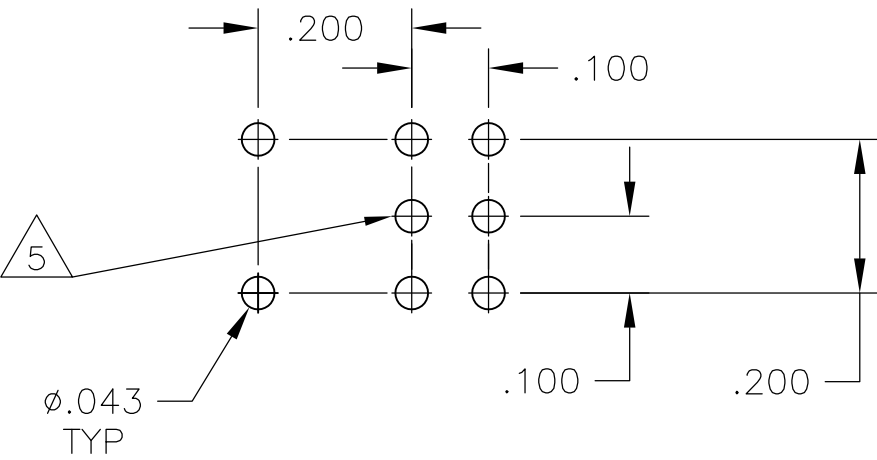
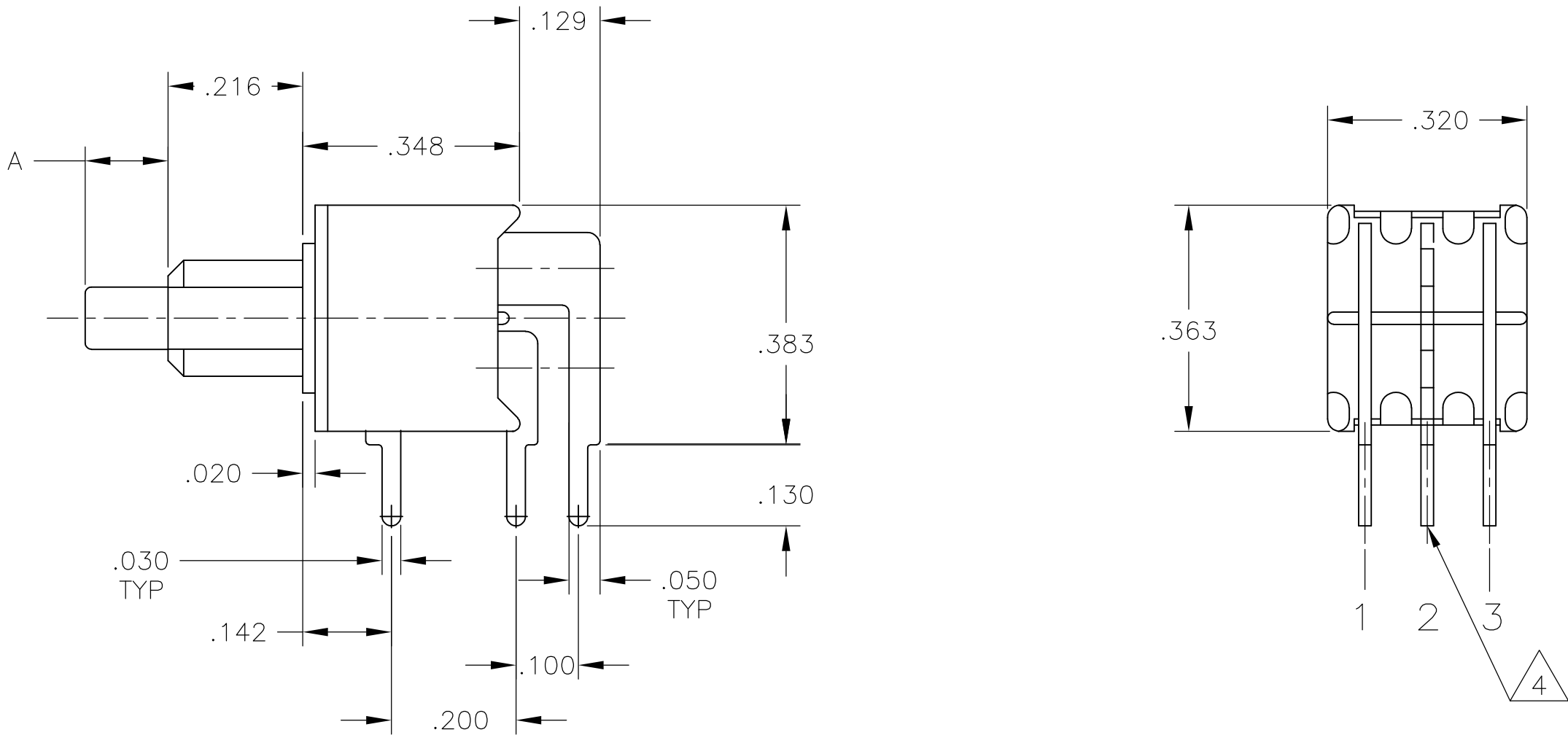
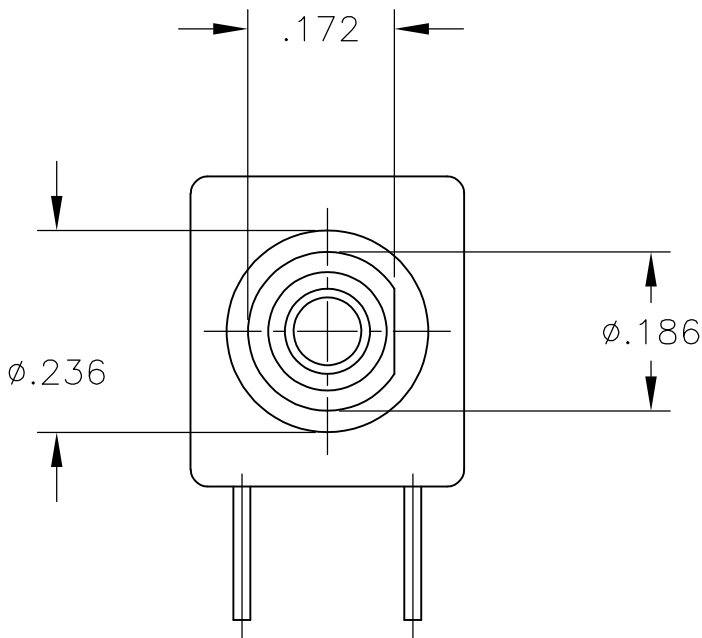
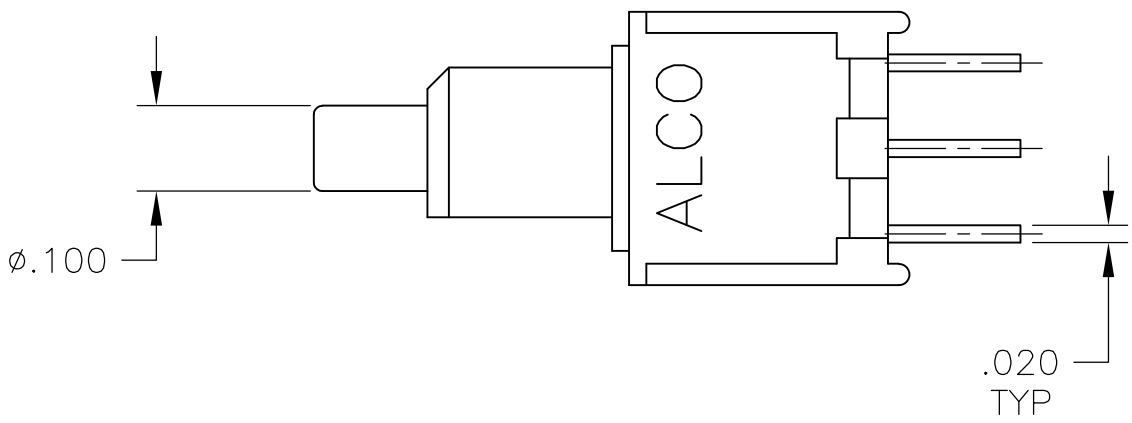
SCALE 4:1 SHEET 1 OF 6 REV A2

4805 (3/11)

| LOC | | DIST | | REVISIONS | | | | | | |
|-----|--|------|---|-------------|-----|-------------|------|-----|------|---|
| AD | | — | | P | LTR | DESCRIPTION | DATE | DWN | APVD | |
| | | | — | SEE SHEET 1 | | | | — | — | — |



TPB11CGRA & TPB11FGRA
TPBF11CGRA & TPBF11FGRA

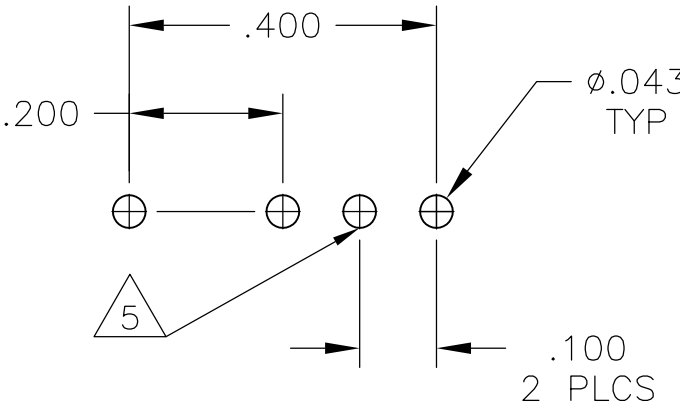
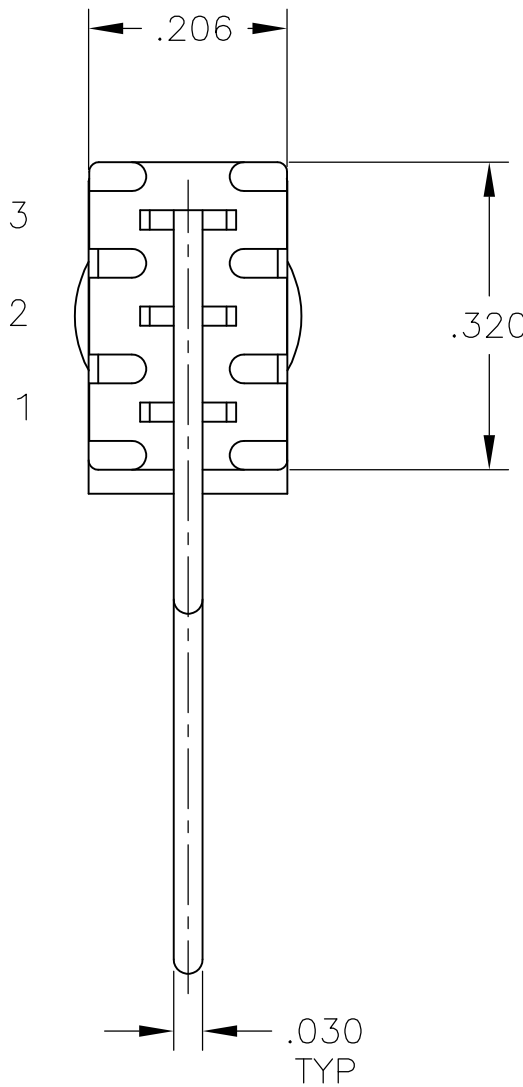
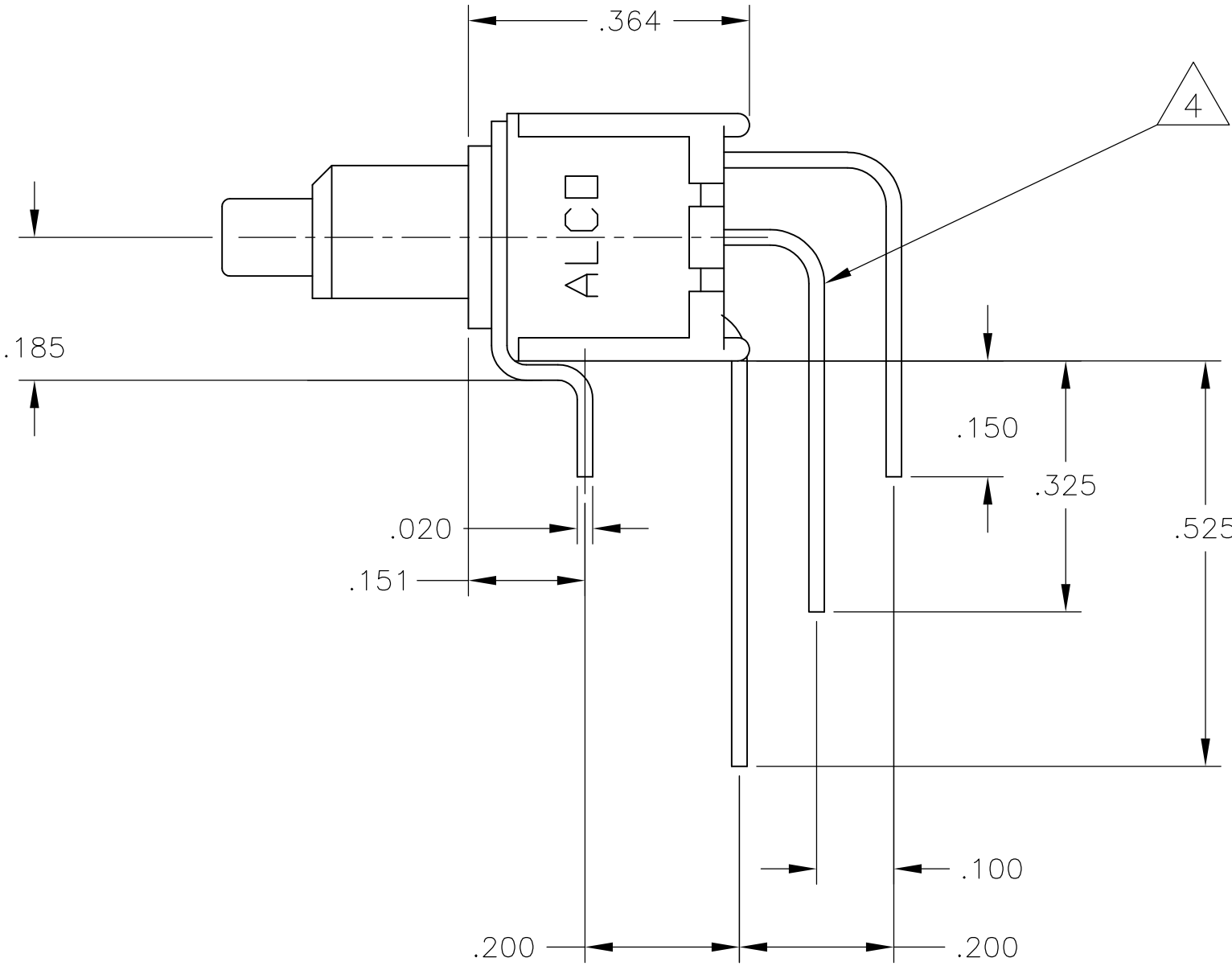
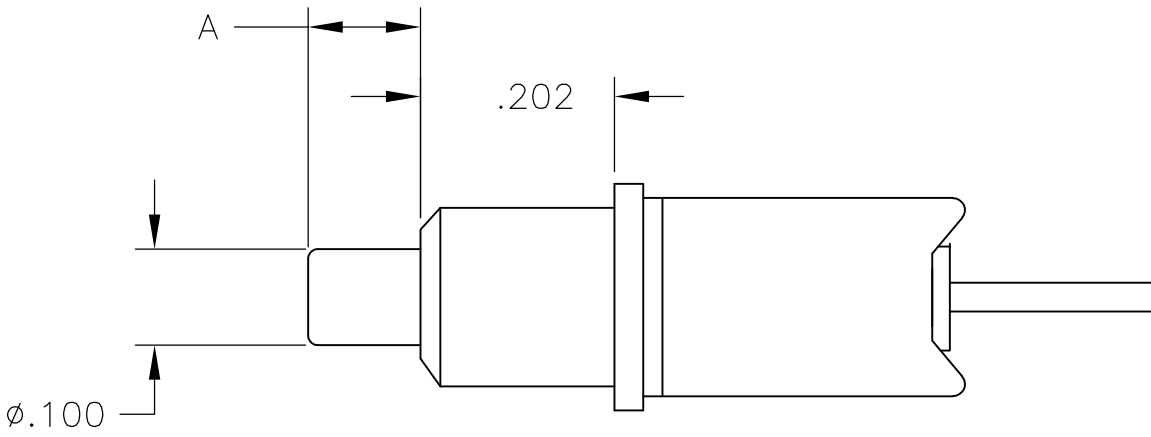
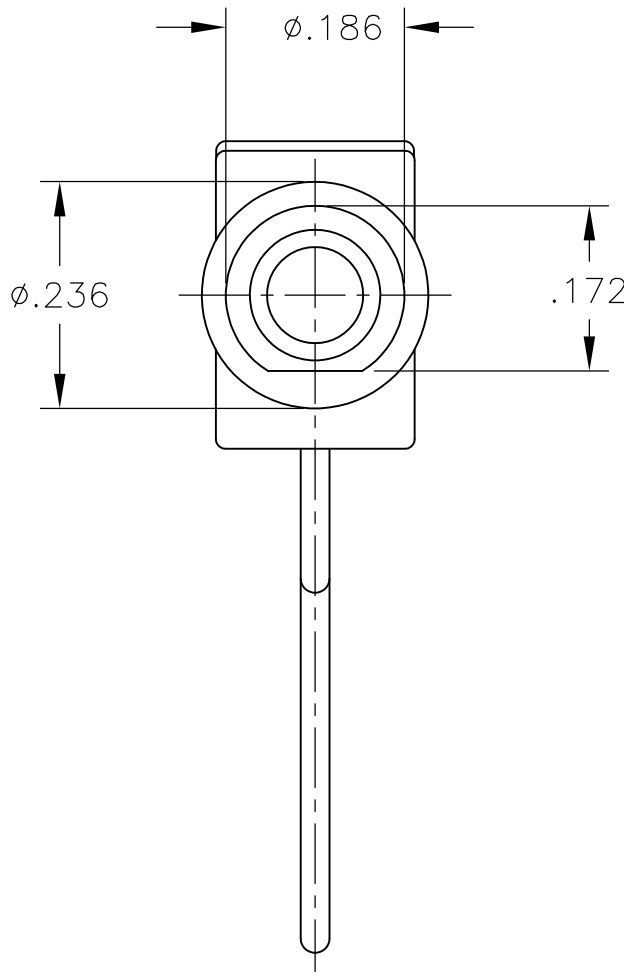


PCB HOLE LAYOUT

TPB21MGRA & TPB21RGRA



| | | | | |
|--|---|-----------------------------|---------------------------------------|---------------------|
| THIS DRAWING IS A CONTROLLED DOCUMENT. | | DWN M. BINNER 20JUL05 | TE Connectivity | |
| | | CHK M. ZITTO 21JUL05 | | |
| DIMENSIONS: INCHES | TOLERANCES UNLESS OTHERWISE SPECIFIED: | APVD M. ZITTO 21JUL05 | NAME PUSHBUTTON SWITCH, TPB SERIES | |
| | | PRODUCT SPEC | — | |
| | 0. PLC ± — 1. PLC ± — 2. PLC ± — 3. PLC ± .010 4. PLC ± — ANGLES ± — | APPLICATION SPEC | — | |
| | | — | — | |
| MATERIAL | FINISH | WEIGHT | A1 00779 1825097 | |
| — | — | — | CUSTOMER DRAWING | |
| | | SCALE | 4:1 | SHEET 3 OF 6 REV A2 |

| LOC | DIST | REVISIONS | | | | | |
|-----|------|-----------|-----|-------------|------|-----|------|
| | | P | LTR | DESCRIPTION | DATE | DWN | APVD |
| AD | — | | — | SEE SHEET 1 | — | — | — |

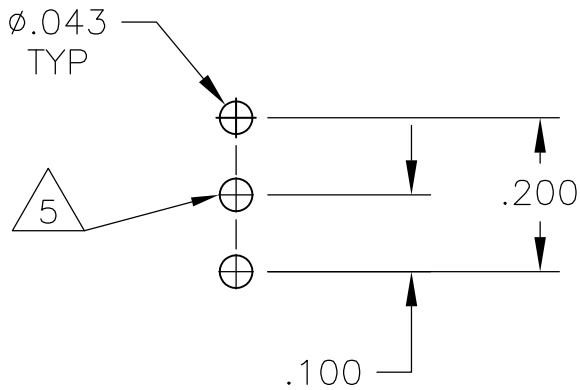


PCB HOLE LAYOUT

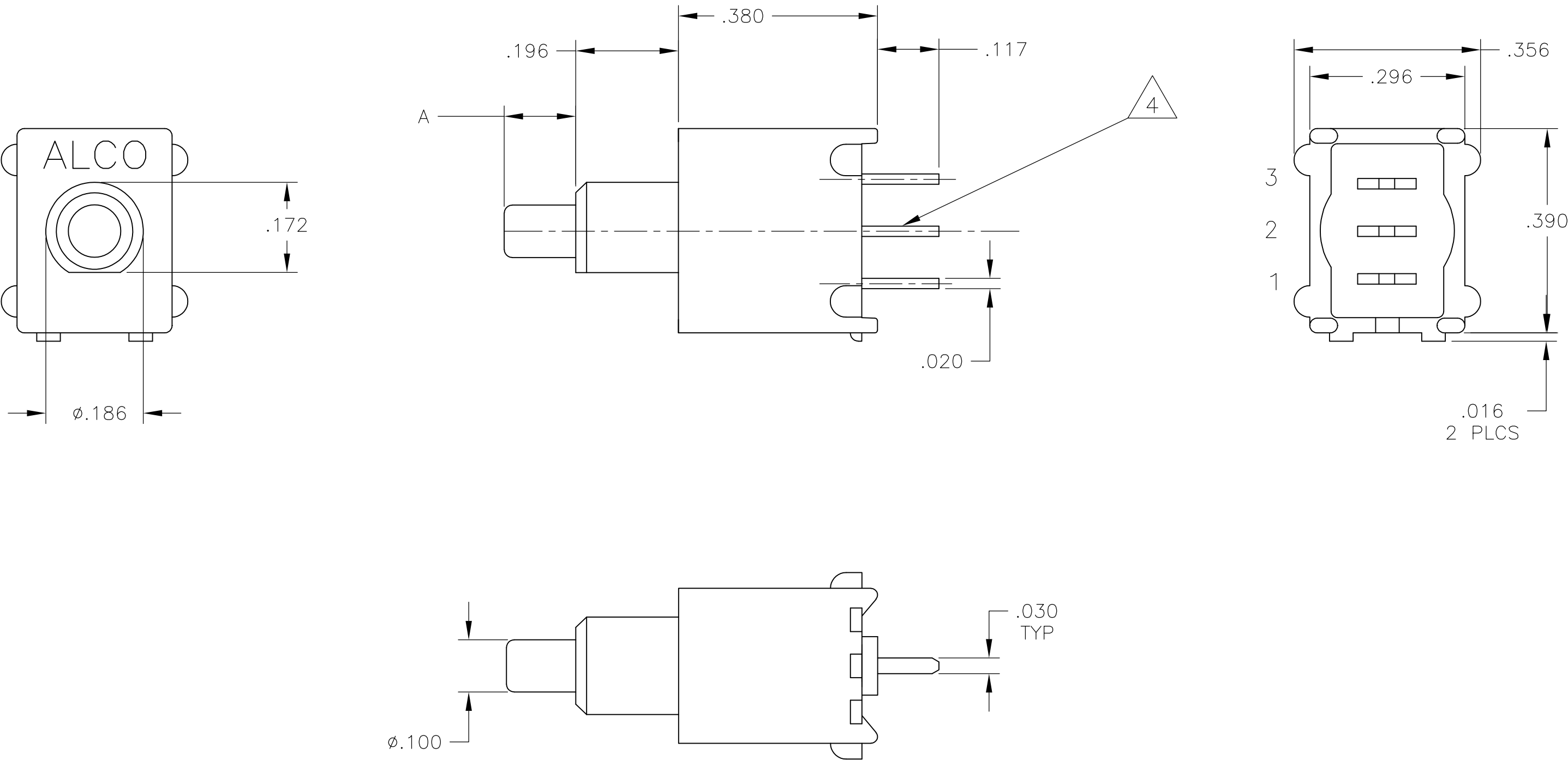
TPB11CVRA & TPB11FGVRA

| | | | | | | | | | | | |
|---|--|--|------------------|------------------|---|---------------------------------------|--------------------|------------------------|--------------------|-----|----|
| THIS DRAWING IS A CONTROLLED DOCUMENT. | | | DWN M. BINNER | 20JUL05 |  TE Connectivity | | | | | | |
| DIMENSIONS: INCHES | | | CHK M. ZITTO | 21JUL05 | | | | | | | |
|  | TOLERANCES UNLESS OTHERWISE SPECIFIED: | | | AP'D M. ZITTO | 21JUL05 | NAME PUSHBUTTON SWITCH, TPB SERIES | | | | | |
| | 1 P L C | | | ± — | | PRODUCT SPEC — | | | | | |
| | 2 P L C | | | ± — | | — | | | | | |
| | 3 P L C | | | ± .010 | | APPLICATION SPEC — | | | | | |
| | 4 P L C | | | ± — | | — | | | | | |
| | ANGLES | | | ± — | | — | | | | | |
| | FINISH | | | — | | — | | | | | |
| MATERIAL | — | | | WEIGHT | — | SIZE A1 | CAGE CODE 00779 | DRAWING NO. 1825097 | RESTRICTED TO — | | |
| CUSTOMER DRAWING | | | | | | SCALE | 4:1 | SHEET | 4 OF 6 | REV | A2 |



| LOC | DIST | REVISIONS | | | | |
|-----|------|-----------|-----|-------------|------|-----|
| AD | — | P | LTR | DESCRIPTION | DATE | OWN |
| | | — | — | SEE SHEET 1 | — | — |



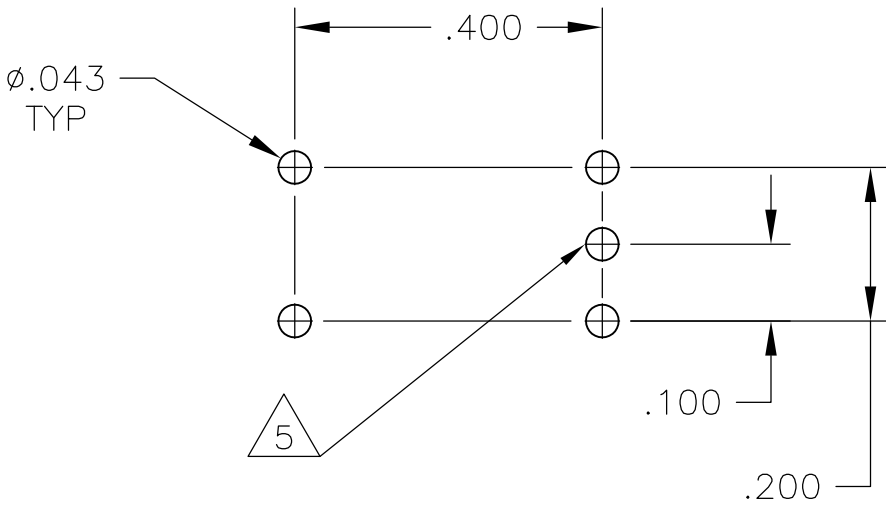
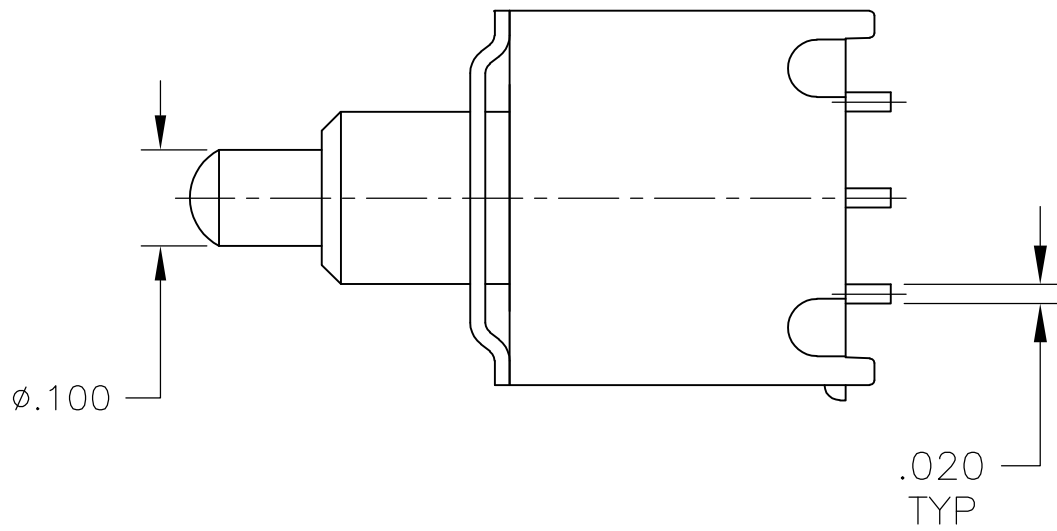
PCB HOLE LAYOUT



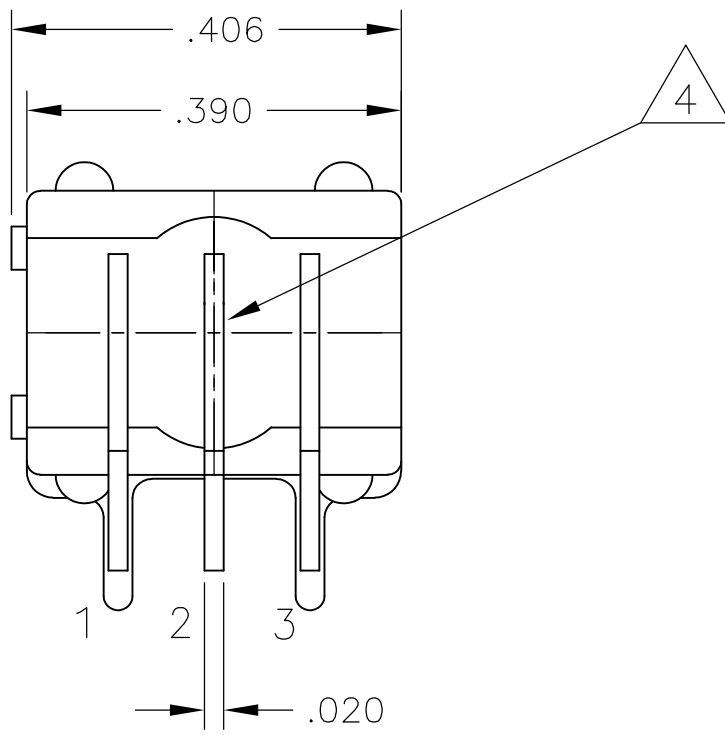
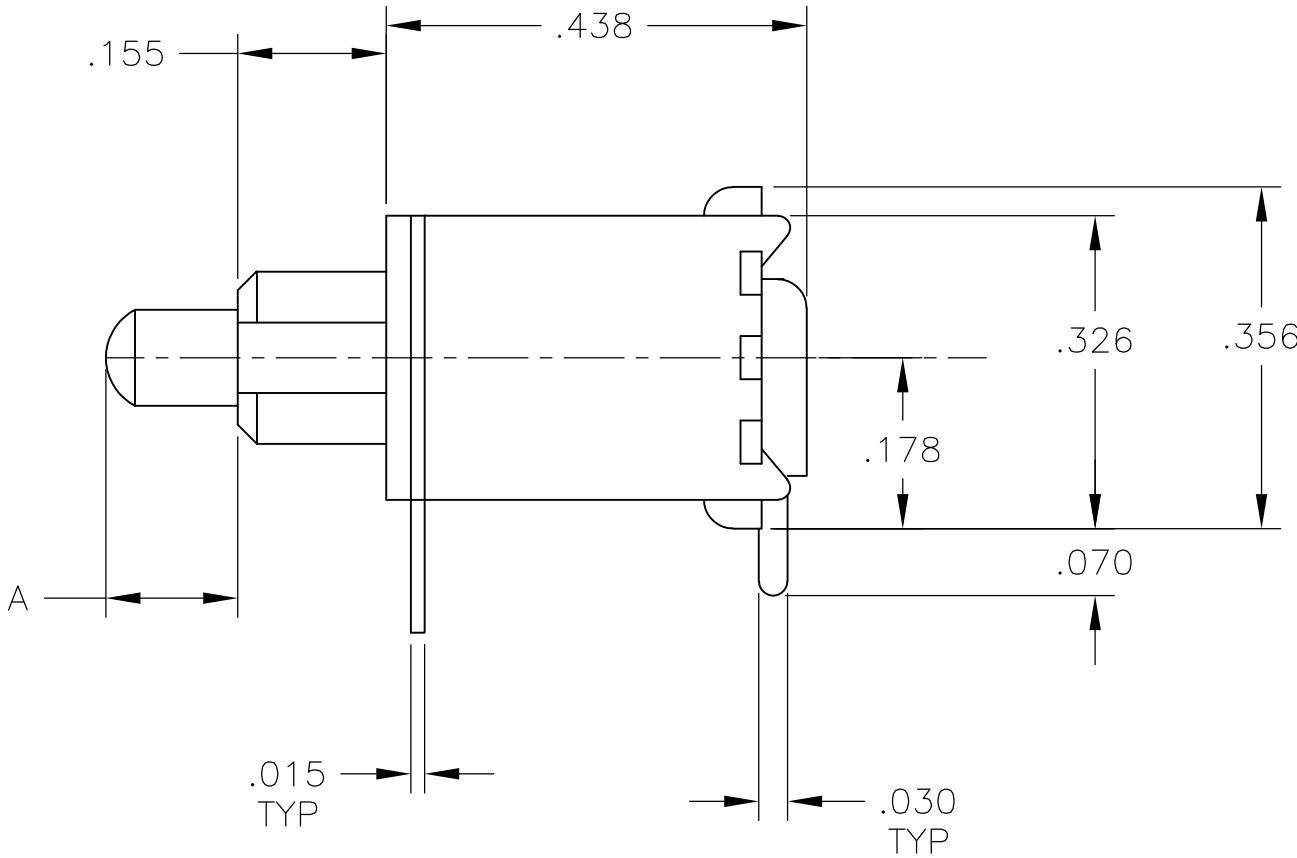
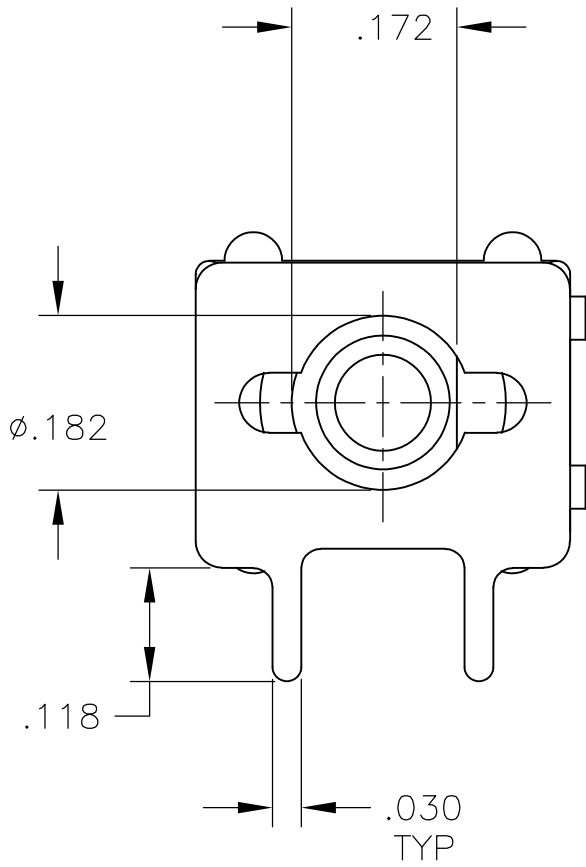
TPB11CGPCES & TPB11FGPCES
TPBF11CGPCES & TPBF11FGPCES

| | | | | | | | | | | | |
|---|---|-----------------|---------------------|---|------|-------------------------------|-----------|------------|---------------|----|--|
| THIS DRAWING IS A CONTROLLED DOCUMENT. | | DWN M.BINNER | 20JUL05 |  TE Connectivity | | | | | | | |
| DIMENSIONS: INCHES | | CHK M.ZITTO | 21JUL05 | | | | | | | | |
|  | TOLERANCES UNLESS OTHERWISE SPECIFIED: | | APPROVED M.ZITTO | 21JUL05 | NAME | PUSHBUTTON SWITCH, TPB SERIES | | | | | |
| | 0. PLC ± .010 | | PRODUCT SPEC | | — | | | | | | |
| | 1. PLC ± .010 2. PLC ± .010 3. PLC ± .010 4. PLC ± .010 ANGLES ± .010 | | APPLICATION SPEC | | — | | | | | | |
| MATERIAL — | FINISH — | WEIGHT | | — | | SIZE | CAGE CODE | DRAWING NO | RESTRICTED TO | | |
| | | — | | — | | A1 | 00779 | C1825097 | — | | |
| CUSTOMER DRAWING | | | | SCALE | | 4:1 | SHEET | 5 OF 6 | REV | A2 | |

| LOC | DIST | REVISIONS | | | | |
|-----|------|-----------|-----|-------------|------|-----|
| AD | — | REV | LTR | DESCRIPTION | DATE | OWN |
| | | — | | SEE SHEET 1 | — | — |



PCB HOLE LAYOUT



TPB11CGRAES & TPB11FGRAES
TPBF11CGRAES & TPBF11FGRAES

| | | | | | |
|--|--|-------------------|---------|---------------------------------------|--|
| THIS DRAWING IS A CONTROLLED DOCUMENT. | | DWN M. BINNER | 20JUL05 | TE Connectivity | |
| | | CHK M. ZITTO | 21JUL05 | | |
| DIMENSIONS: INCHES | | APPRO M. ZITTO | 21JUL05 | NAME PUSHBUTTON SWITCH, TPB SERIES | |
| | | PRODUCT SPEC | | — | |
| | | APPLICATION SPEC | | — | |
| | | WEIGHT | | — | |
| MATERIAL — | | FINISH — | | RESTRICTED TO — | |
| | | CUSTOMER DRAWING | | SCALE 4:1 SHEET 6 OF 6 REV A2 | |

Mouser Electronics

Authorized Distributor

Click to View Pricing, Inventory, Delivery & Lifecycle Information:

[TE Connectivity:](#)

[TPB11CGVRA004](#)