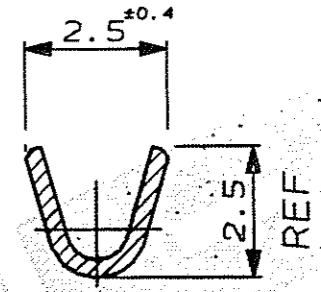
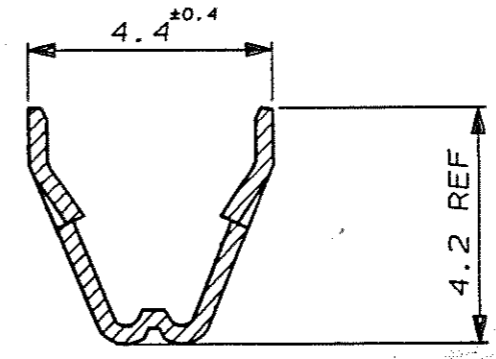
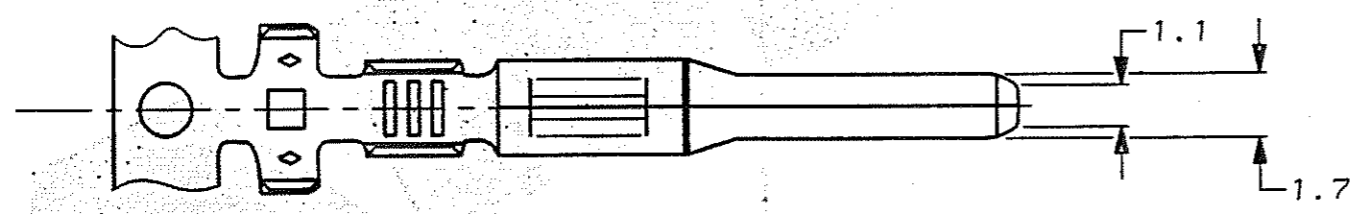
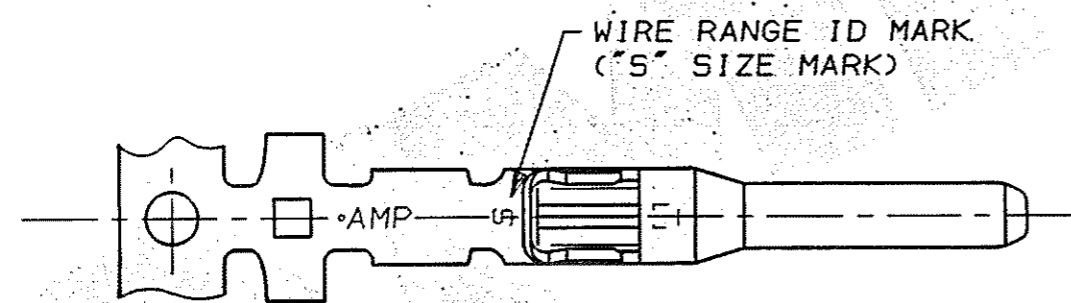
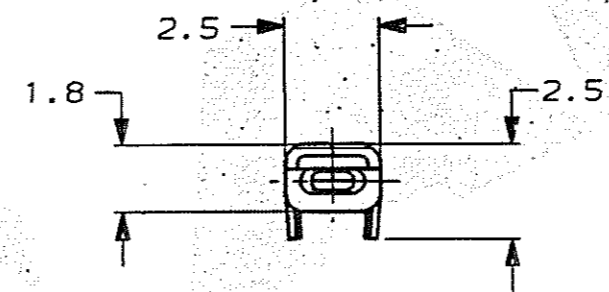
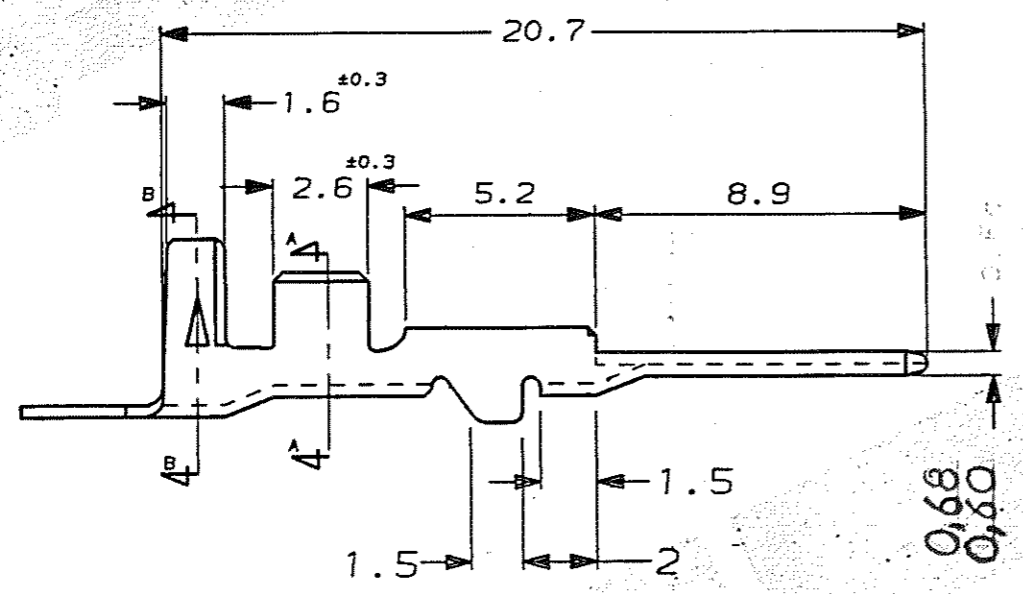


C.A.D. FILE CODE  
S. C345210.B



SECT B-B

SECT A-A



- NOTES: -
- 1 WIRE DETAILS : 0.3-0.5mm<sup>2</sup> , 1.2-2.0 INS. DIA.
  - 2 SIMILAR TO PART NUMBER 173633.

PRE-TIN		BRASS	345210-1
FINISH		MATERIAL	PART NUMBER
CUSTOMER DWG FOR REFERENCE ONLY		©COPYRIGHT 1991 BY AMP OF GREAT BRITAIN LTD. ALL INTERNATIONAL RIGHTS RESERVED. ALL PRODUCTS MAY BE COVERED BY BRITISH AND FOREIGN PATENTS AND/OR PATENTS PENDING.	
-		TOLERANCES UNLESS OTHERWISE STATED :	DR. D.R. TERRY      16 OCT 1991
-		DEC ± 0.5	CH. M MISTRY      APP. M MISTRY
-		ANGLES ± 1°	<b>AMP</b> TERMINAL HOUSE of Great Britain Ltd.      STANMORE MIDD.
B	EB00-019-02	-	-1-7-02
A	SEE EB00-0191-93	18-6-93	NAME
0	RELEASE FOR PROD.	C6323	24-8-92
1	M. MISTRY	-	16-10-91
REV	APPROVED	ECN	DATE
SCALE		LOC	SIZE
5/1		E	A3
DWG.No.		C345210	
REV	B	SHEET	1/1

# Mouser Electronics

Authorized Distributor

Click to View Pricing, Inventory, Delivery & Lifecycle Information:

[TE Connectivity:](#)

[345210-1](#)