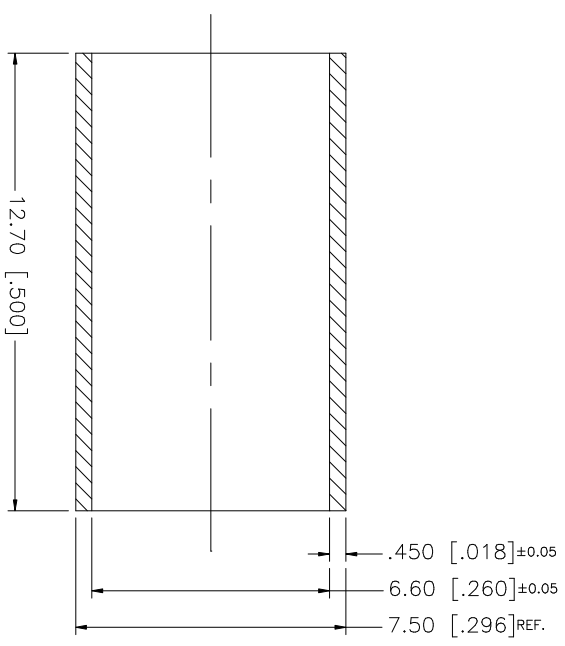


REV.	DATE	DESCRIPTION
A	06/05/03	UPDATE DRAWING FORMAT



REMARK:
 ROCKWELL HARDNESS OF
 55 MAX. ON 15-T SCALE
 (HEAT TREAT FOR 45 MIN.
 AT 1100°F BEFORE PLATING)

Amphenol Connex

UNLESS OTHERWISE SPECIFIED DIMENSIONS ARE IN MILLIMETERS DIMENSIONS IN [] ARE IN INCHES AND FOR CUSTOMER REFERENCE ONLY.	UNLESS OTHERWISE SPECIFIED TOLERANCES FOR MILLIMETERS ARE:	UNLESS OTHERWISE SPECIFIED TOLERANCES FOR INCHES ARE:	APPROVALS	DATE	PART DESCRIPTION
1	0.20 - .315 = ± 0.007"	.020 - .315 = ± 0.007"	DRAWN		FERRULE - 59
2	.315 - 1.180 = ± 0.015"	.315 - 1.180 = ± 0.015"	G.R.S.	06/05/03	
3	1.180 - 4.724 = ± 0.020"	1.180 - 4.724 = ± 0.020"	CHECKED		
4			ISSUED		
5			SHEET	1 OF 1	
6					PART NO.
7					FERRULE - 59
8					
DO NOT SCALE DRAWING			CAD FILE		DWG. NO.
			C:/MISC/FERRULE-59.DWG		FERRULE-59.DWG
DESCRIPTION			MATERIAL	FINISH	QTY
			COPPER	SILVER	1

REV. B SIZE A SCALE NA

Mouser Electronics

Authorized Distributor

Click to View Pricing, Inventory, Delivery & Lifecycle Information:

[Amphenol:](#)

[FERRULE-59](#)