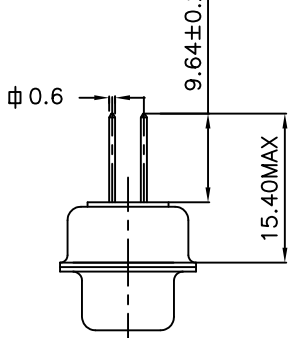
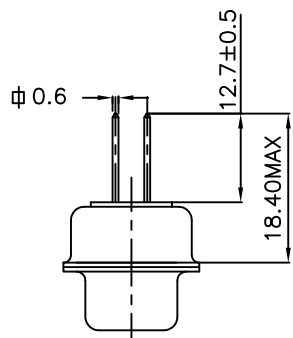
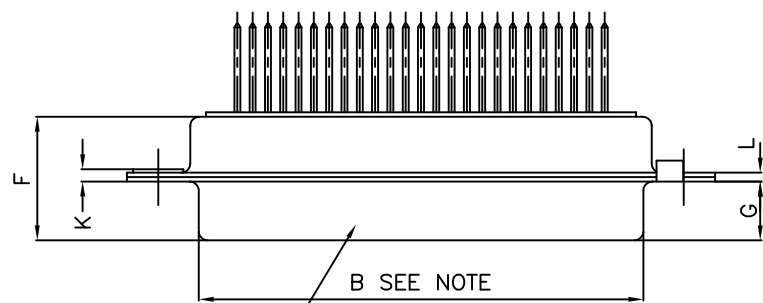
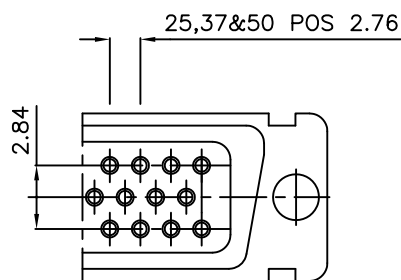
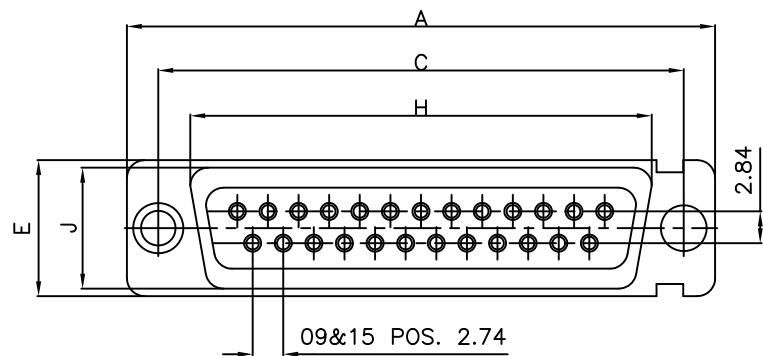


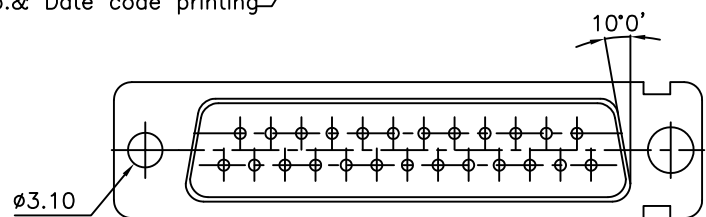
STD MOUNTING

FLOAT MOUNTING

LAYOUT OF 50 POS.CONNECTOR



Part No.& Date code printing

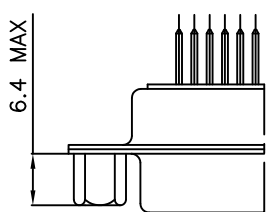
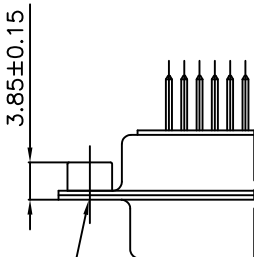
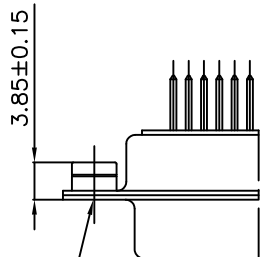


VIEW OF MATING FACE

M3 RIVETTING NUT

UNC 4-40 RIVETTING NUT

HEXAGONAL FEMALE SCREW- LOCK UNC 4-40



OPTION:- L

OPTION:- O

OPTION:- V

50	P	66.65	52.68	61.11	11.08	14.99	11.09	5.85	55.07	13.31	1.50	1.0
	S	66.65	52.30	61.11	10.62	14.99	11.21	6.05	55.07	13.31	1.10	0.8
37	P	68.94	55.30	63.50	8.23	12.17	11.09	5.85	57.45	10.46	1.50	1.0
	S	68.94	54.71	63.50	7.77	12.17	11.21	6.05	57.45	10.46	1.10	0.8
25	P	52.65	38.84	47.04	8.23	12.17	11.07	5.85	41.02	10.46	1.10	0.8
	S	52.65	38.25	47.04	7.77	12.17	11.21	6.05	41.02	10.46	1.10	0.8
15	P	38.76	25.12	33.32	8.23	12.17	10.99	5.85	27.25	10.46	1.10	0.8
	S	38.76	24.54	33.32	7.77	12.17	11.21	6.05	27.25	10.46	1.10	0.8
09	P	30.43	16.79	24.99	8.23	12.17	10.99	5.85	19.02	10.46	1.10	0.8
	S	30.43	16.21	24.99	7.77	12.17	11.21	6.05	19.02	10.46	1.10	0.8
SHELL SIZE		A-0	B-0	C ±0.12	D-0	E-0	F MAX	G-0	H-0	J-0	K±0.20	L-0
		+0.76	+0.25	±0.12	+0.25	+0.76	F MAX	+0.15	+0.51	+0.51	K±0.20	+0.22

NOTE:-INSIDE DIMENSIONS OF MALE AND OUTSIDE DIMENSIONS OF THE FEMALE CONNECTOR.

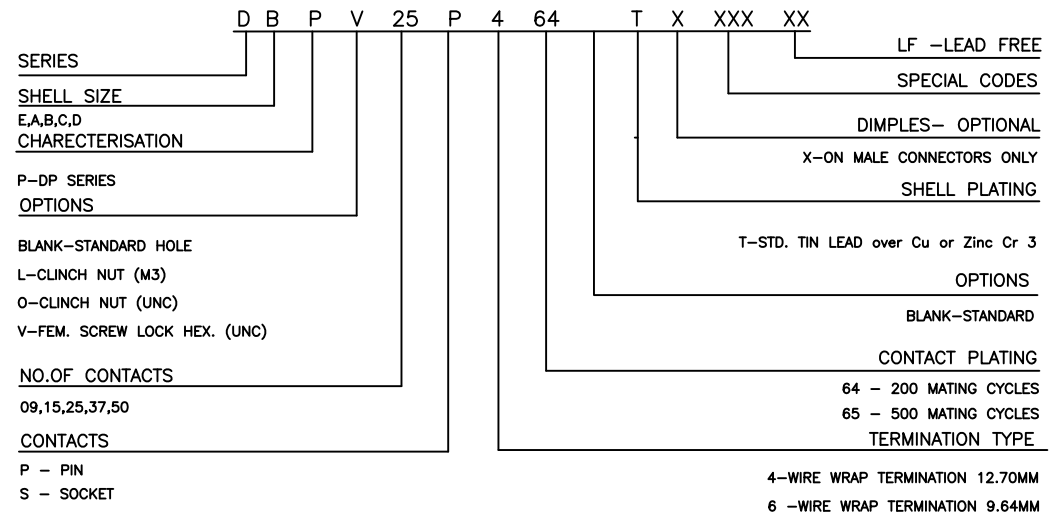
TECHNICAL SPECIFICATIONS

- SHELLS : TIN/ZINC PLATED
- INSULATOR MATERIAL : SELF EXTINGUISHING BLACK POLYESTER UL CLASS 94V0
- THE HOUSING WILL WITHSTAND EXPOSURE TO 260-265°C
- IF WE USE PROTECTIVE ADHESIVE (type Kapton or Teflon)
- OR PROTECTIVE METALLIC DEVICE
- CONTACTS DIA ON ACTIVE AREA : 1 MM.
- CONTACTS MATERIAL : COPPER ALLOY
- CONTACT PLATING : GOLD OVER NICKEL
- OPERATING TEMPERATURE : -55°C +125°C
- OPERATING CURRENT : 7.5 A PER CONTACT
- CONTACT RESISTANCE : <7.3 mΩ
- INSULATION RESISTANCE : ≥5000 MΩ
- MAXIMUM VOLTAGE : 1000 V.r.m.s
- MECHANICAL ENDURANCE : 500 MATINGS FOR CODE 65
- : 200 MATINGS FOR CODE 64
- DAMP HEAT : 56 DAYS FOR CODE 65
- : 21 DAYS FOR CODE 64

LEAD FREE NOTE

"This LF product meets European Union Directives and other country regulations as described in GS-22-008" Packaging as per GS-14-920

ORDERING INFORMATION



mat'l. code	SEE NOTE 4	surface	ISO 1302 ✓	tolerance	ISO 406 ISO 1101	projection	product family
ltr	ecn no	dr	date	tolerances unless otherwise specified		MM	title
C	i06-0074	GVJ	2006/06/08	angles	linear		
D	I11-0003	AMR	2011/01/06			scale	(DP SERIES WITH ASSEMBLY OPTIONS)
sheet index		revision	D	dr	Mini K Vandanath	1999/03/20	dwg no
		sheet	1	enr	George V Joseph	1999/03/20	sheet 1 of 1
				chr	George V Joseph	2006/06/23	size
				appd	K-V SIVADAS	2006/06/23	A3
							type
							Product Customer Drawing

Mouser Electronics

Authorized Distributor

Click to View Pricing, Inventory, Delivery & Lifecycle Information:

[FCI / Amphenol:](#)

[DBP25S465TLF](#) [DDP50P464TXLF](#) [DEP09S465TLF](#) [DAP15P464TXLF](#) [DAP15P465TXLF](#) [DAP15S464TLF](#)
[DAP15S465TLF](#) [DBP25P465TXLF](#) [DDP50P465TXLF](#) [DEP09P464TXLF](#) [DEP09P465TXLF](#) [DEP09S464TLF](#)