

## SAFETY ORGANIZATIONS

THIS FILTER HAS BEEN FORMALLY RECOGNIZED, CERTIFIED OR APPROVED BY THE LISTED AGENCY. THEREFORE, ALL TEST/REQUIREMENTS SPECIFIED IN THE LATEST REVISION OF THE FOLLOWING AGENCY STANDARDS HAVE BEEN MET:

UL RECOGNIZED: UL 1283  
CSA CERTIFIED: CSA C22.2 No. 8 PENDING  
VDE APPROVED: EN 60939-2 PENDING

## OPERATING SPECIFICATIONS

LINE CURRENT/VOLTAGE: 20 AMP, 120/250 VAC,  
20 AMP/40°C, 250 VAC

LINE FREQUENCY: 50-60Hz

MAXIMUM LEAKAGE CURRENT,  
EACH LINE TO GROUND: 2μ AMP @ 120V 60Hz  
2μ AMP @ 250V 50Hz

OPERATING AMBIENT TEMP. RANGE: -10°C TO +40°C @ RATED CURRENT,  $I_r$ .

IN AN AMBIENT,  $T_a$ , HIGHER THAN 40°C, THE MAXIMUM OPERATING CURRENT,  $I_o$ , IS AS FOLLOWS:

$$I_o = I_r \sqrt{\frac{85 - T_a}{45}}$$

## RELIABILITY SPECIFICATIONS:

STORAGE TEMPERATURE: -40°C TO +85°C  
HUMIDITY: 21 DAYS @ 40°C 95% RH.  
CURRENT OVERLOAD TEST: 6 TIMES  $I_r$  FOR 8 SECONDS

## TEST SPECIFICATIONS:

INDUCTANCE: 6.0 mH NOMINAL  
CAPACITANCE: (MEASURED @ 1KHz, 0.250VAC MAX., 25°C±1°C)  
LINE TO GROUND: NA μF±20%  
LINE TO LINE: 4.4 μF±20%  
DISCHARGE RESISTOR: .073 MΩ  
L/G AND L/L I.R.  
NO DISCHARGE RESISTOR: 6000MΩ (MIN.) @ 100VDC, 20°C AND 50% RH

## RECOMMENDED RECEIVING INSPECTION HIPOT:

LINE TO GROUND: 1500 VAC FOR 1 MINUTE  
LINE TO LINE: 1450 VDC FOR 1 MINUTE

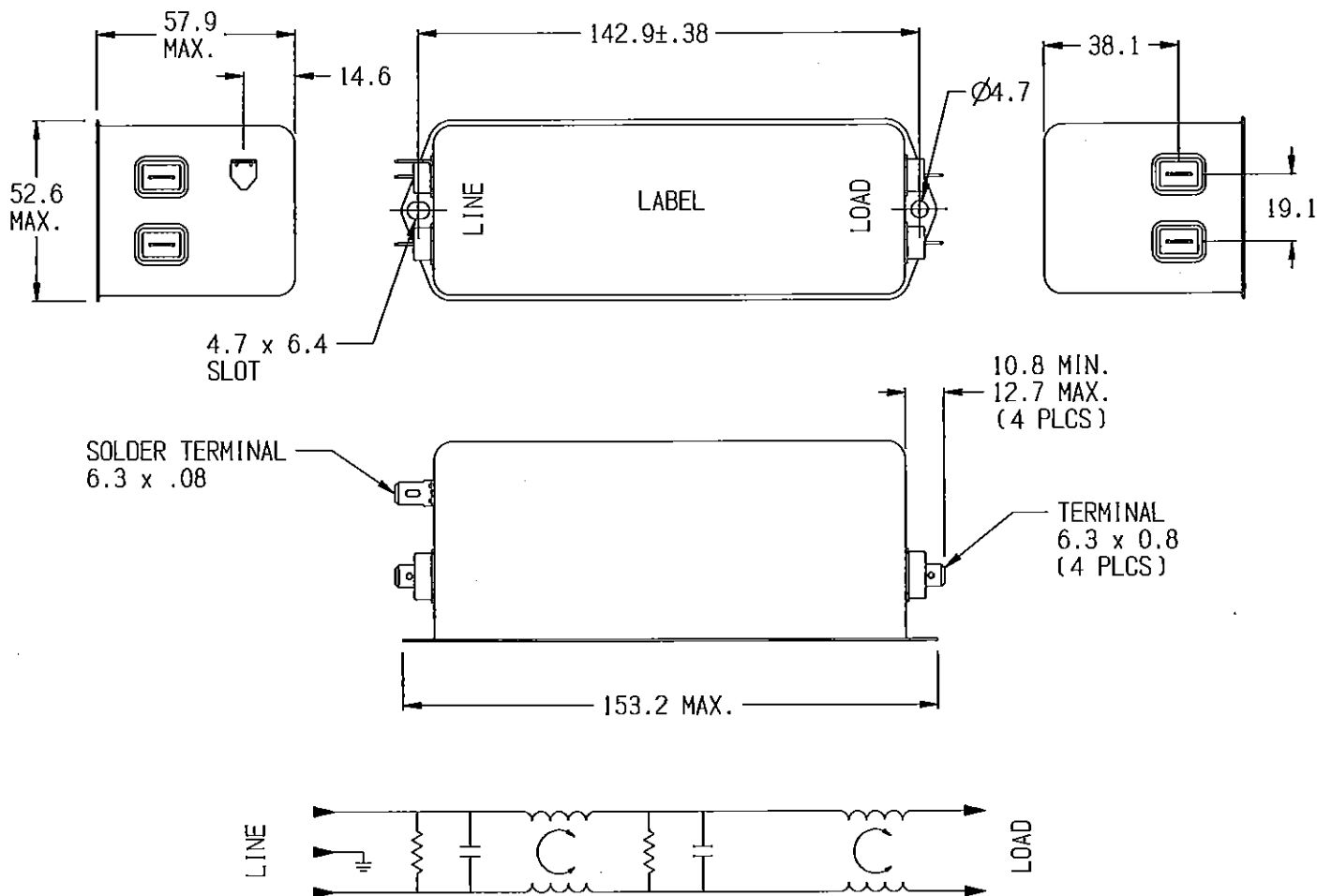
## FILTER APPROVAL:

THE BEST WAY TO SELECT AND QUALIFY A FILTER IS FOR YOUR ENGINEERING TO TEST THE UNIT IN YOUR EQUIPMENT.

## CUSTOMER DRAWING

CATALOG # 20EHQ1

ECN#	APPRVD	DATE
13-007605	TAM	06MAY13



## 50Ω - 50Ω (MINIMUM) INSERTION LOSS

FREQUENCY kHz	.01	.02	.05	.15	.5	1	5	10	30	/	/	/
COMMON dB	6	12	20	30	34	34	25	20	15	/	/	/
DIFF. dB	15	20	20	46	65	70	65	60	60	/	/	/

PARTS SHALL COMPLY WITH TYCO ELECTRONICS 138-702 SPECIFICATION FOR HAZARDOUS SUBSTANCES

UNLESS OTHERWISE SPECIFIED  
TOLERANCE TO BE ±0.64  
MATERIAL & FINISH: AS SUPPLIED  
DIMENSIONS IN MILLIMETERS

## NOTES:

**TE** TE Connectivity

## POWER LINE FILTER

TE PART NO.: 4-1609037-2

SCALE:	DATE:	DRAWING NUMBER:	REV.
1/2	02MAY13	20EHQ1	A
DRW. BY:	DATE:		
LJO	TAM		

20EHQ1-A.cxd

# Mouser Electronics

Authorized Distributor

Click to View Pricing, Inventory, Delivery & Lifecycle Information:

[TE Connectivity:](#)

[20EHQ1](#) [4-1609037-2](#)