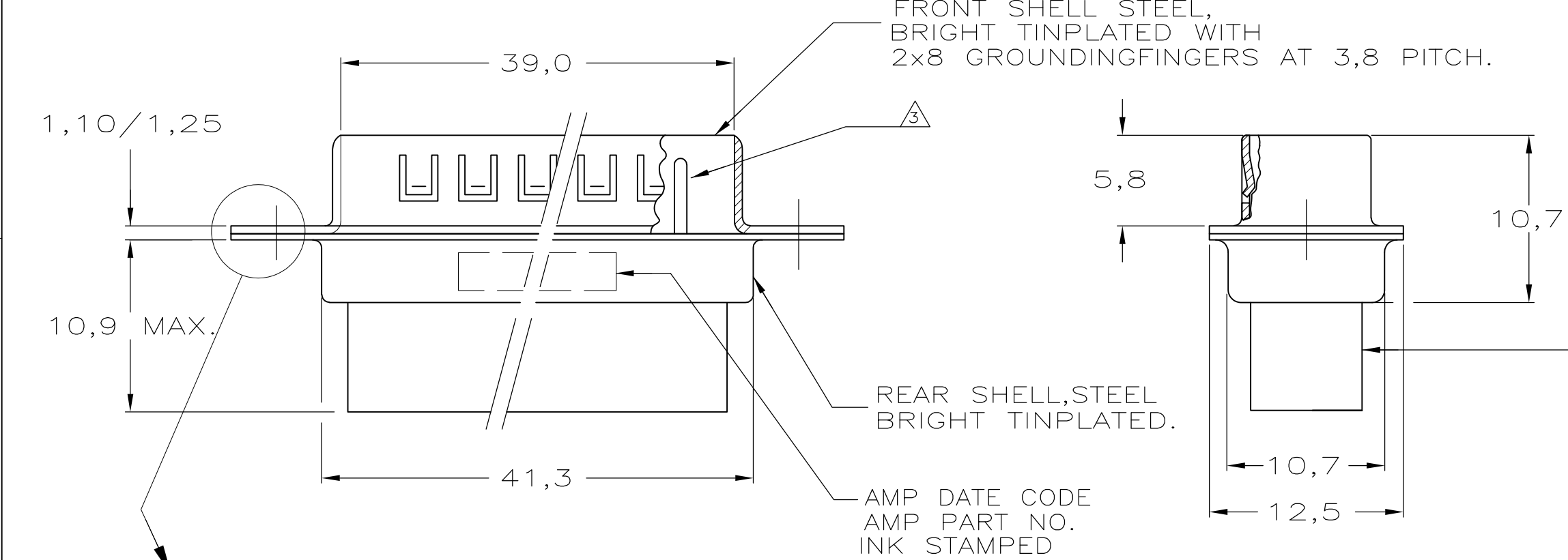
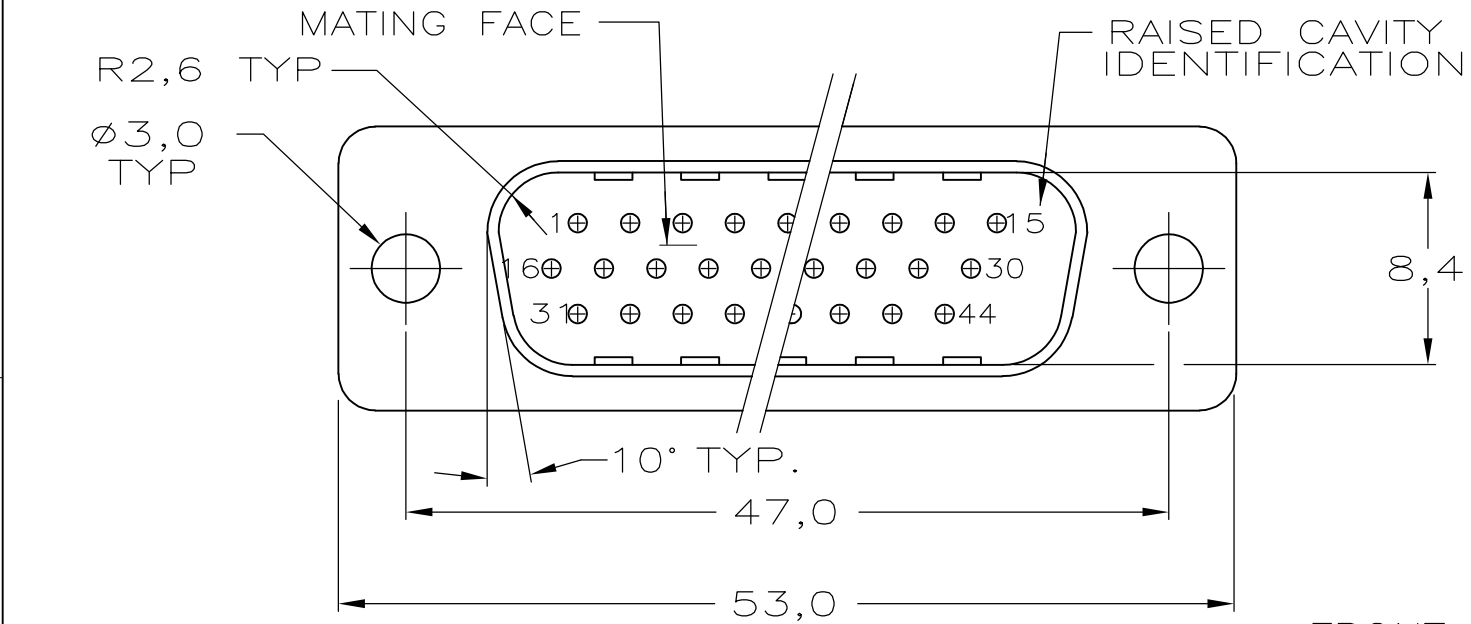


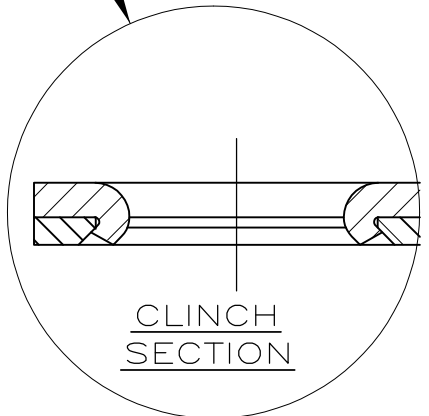
THIS DRAWING IS UNPUBLISHED. RELEASED FOR PUBLICATION
© COPYRIGHT - By - ALL RIGHTS RESERVED.

REVISIONS					
P	LTR	DESCRIPTION	DATE	DWN	APVD
	D	REVISED PER ECO-16-001693	25AUG2016	AP	DG


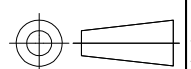
- 1 THIS PLUG ACCEPTS SIZE 22 PIN CONTACTS
- 2 RETENTION TINES ARE AN INTEGRAL PART OF INSERT.
- 3 CONTACTS SHOWN FOR ILLUSTRATION ONLY,NO PART OF CONNECTOR PACKAGE,MUST BE ORDERED SEPARATELY.
- 4 CONTACT INSERTION/REMOVAL TOOL AMP P.N. 91285-1 IS RECOMMENDED FOR USE WITH THESE CONNECTORS



INSERTS: NYLON
GLASS-FILLED
SELF-EXTINGUISHING
COLOR: BLACK



2196156-1 AS SHOWN

THIS DRAWING IS A CONTROLLED DOCUMENT.		DWN J. v. LIEMPT 06DEC1988	 TE Connectivity		
DIMENSIONS: mm		CHK -			
		APVD -	NAME		
		PRODUCT SPEC -	HDP-22 PLUG CONNECTOR, SIZE 3, (44 POSITION)		
MATERIAL -		APPLICATION SPEC -	RESTRICTED TO -		
		WEIGHT 0.000000	SIZE A3	CAGE CODE 00779	DRAWING NO C-216156
FINISH -		CUSTOMER DRAWING		SCALE NTS	SHEET 1 OF 1
				REV D	

Mouser Electronics

Authorized Distributor

Click to View Pricing, Inventory, Delivery & Lifecycle Information:

[TE Connectivity:](#)

[216156-1](#)