

THIS DRAWING IS UNPUBLISHED.

RELEASED FOR PUBLICATION

© COPYRIGHT — By — ALL RIGHTS RESERVED.

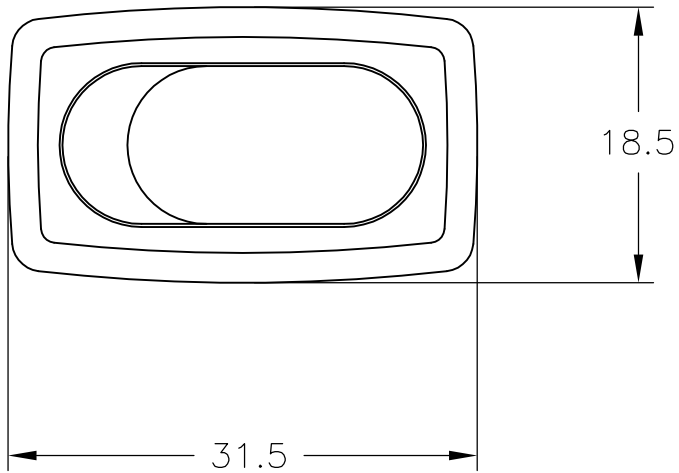
REVISIONS					
P	LTR	DESCRIPTION	DATE	DWN	APVD
	F2	REVISED PER ECO-10-005254	17MAR10	HMR	NE
	F3	REVISED PER ECO-16-017354	07MAR2017	RK	AS

D

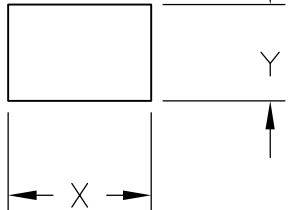
C

B

A



PANEL CUT OUT

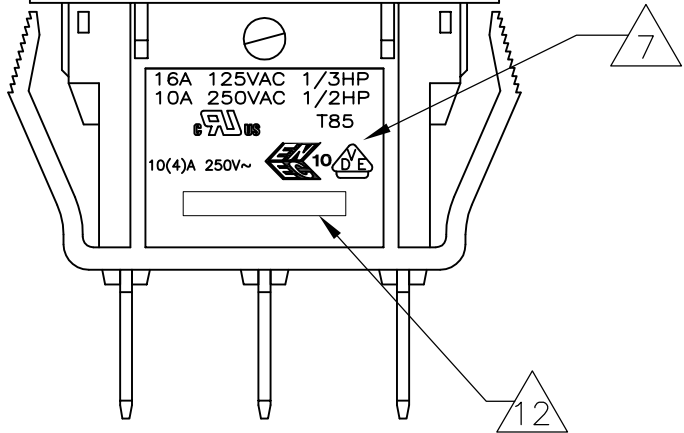
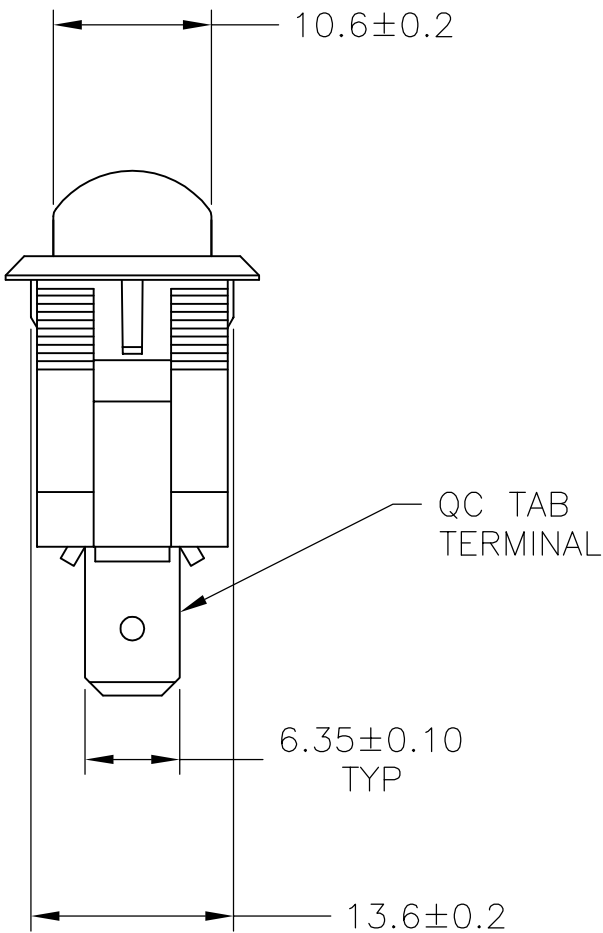
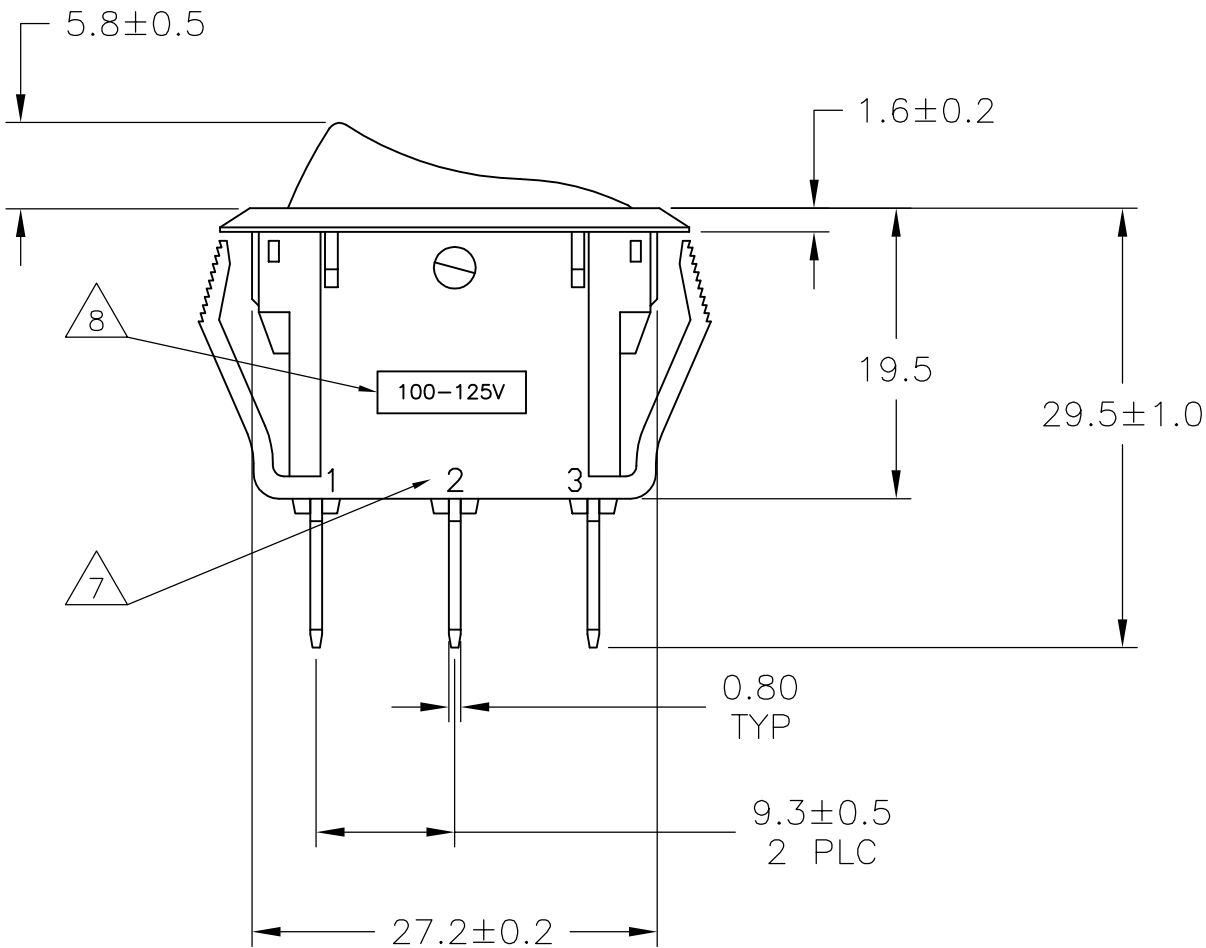
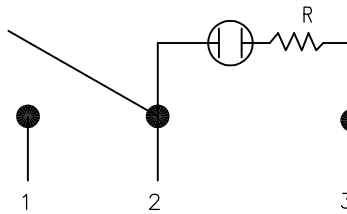


4.00-5.00	28.0-0.1	13.8+0.1
3.00-4.00	27.8-0.1	13.8+0.1
0.75-3.00	27.6-0.1	13.8+0.1
PANEL THICKNESS	X	Y

SWITCH FRAME

ROCKER BUTTON

SWITCH FUNCTION B1 & B3  
CIRCUIT DIAGRAM



1571092-1 SHOWN

THIS DRAWING IS A CONTROLLED DOCUMENT.		DWN M.BINNER 25FEB2002	TE Connectivity		
DIMENSIONS: mm		CHK J.MOSIER			
TOLERANCES UNLESS OTHERWISE SPECIFIED:		APVD —	NAME		
0 PLC ± — 1 PLC ± 0.30 2 PLC ± 0.05 3 PLC ± — 4 PLC ± — ANGLES ± —		PRODUCT SPEC NOT APPLICABLE	POWER ROCKER SWITCH 13.8mmX27.6mm PANEL SIZE SPST 3 TERMINALS, LAMP-ILLUMINATED		
MATERIAL 1		APPLICATION SPEC NOT APPLICABLE	SIZE A2	CAGE CODE 00779	DRAWING NO. C-1571092
FINISH 2		WEIGHT 0	RESTRICTED TO —		
CUSTOMER DRAWING			SCALE 2:1	SHEET 1 of 2	REV F3

D

C

B

A

1571092



# Mouser Electronics

Authorized Distributor

Click to View Pricing, Inventory, Delivery & Lifecycle Information:

[TE Connectivity:](#)

[PRBSB1-16F-BR000](#)