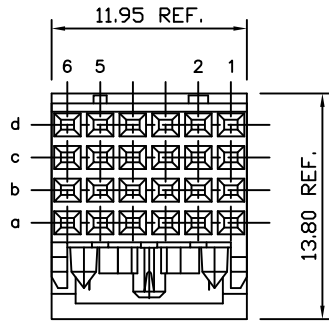


Tous droits strictement reserves. Reproduction ou communication a des tiers interdite sous quelque forme que ce soit sans autorisation écrite du propriétaire. Propriete de c FCI. Droits de reproduction FCI.

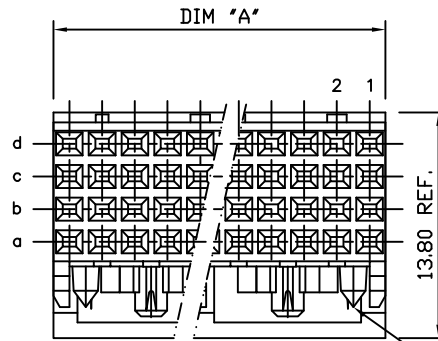


All rights strictly reserved. Reproduction or issue to third parties in any form whatever is not permitted without written authority from the proprietor. Property of FCI. Copyright FCI.

PRODUCT NUMBER
93235-XYX
93235-XYLF

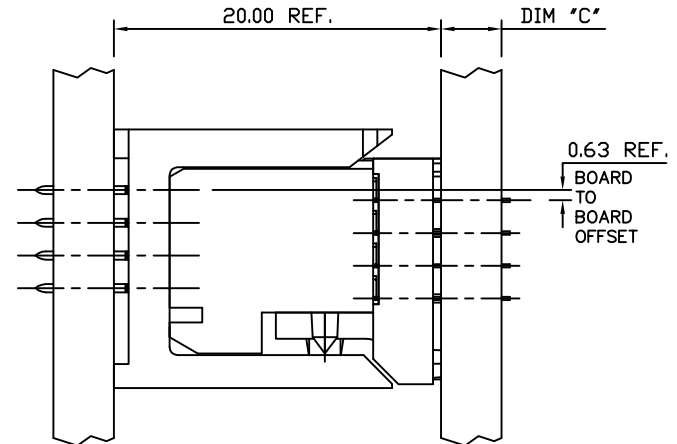
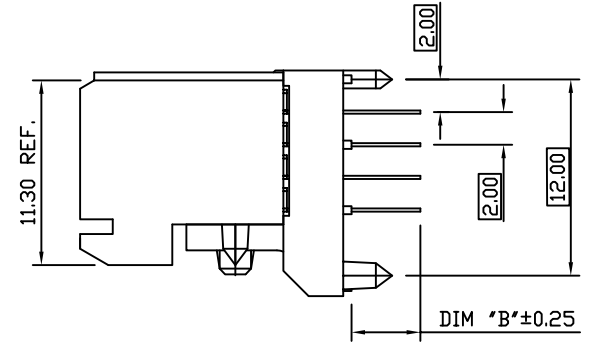
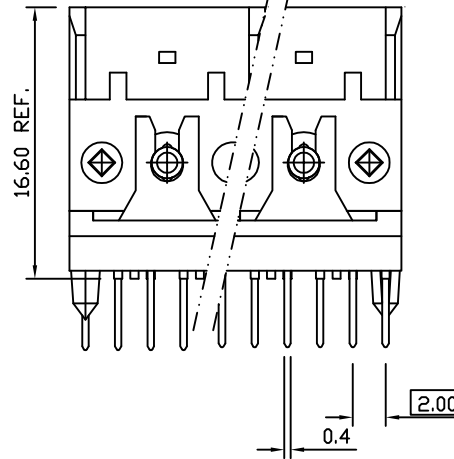
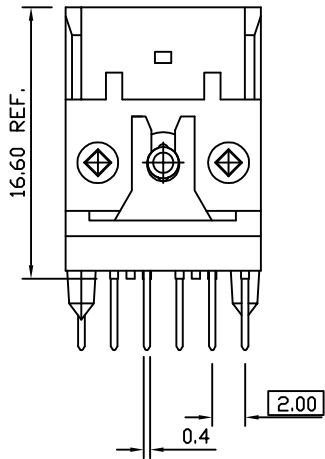


4X6MM -X11, -X12, AND -X13



4X12MM -X21, -X22, AND -X23
4X24MM -X31, -X31S, -X32, AND -X33
4X48MM -X41, -X41S, -X42, AND -X43

NOTE 7



PLATING CONTACT AREA:	
DASH NR:	PERFORMANCE LEVEL
-1YY/1YYLF	TELCORDIA CO
-2YY/2YYLF	CUSTOMER SPECIAL
-3YY/3YYLF	CUSTOMER SPECIAL

mat'l. code SEE NOTES				tolerances unless otherwise specified		CUSTOMER COPY	FCI www.fciconnect.com	
ltr	ecn no	dr	date	linear	.X ±.3	projection	title	
M	0607-0171	Cenh	05/25/07		.XX ±.10		VERT. SIG. RECEIPT ASSY	
N	0607-0375	Cenh	9/10/07		.XXX ±.050		4x6, 4x12, 4x24, 4x48	
P	0608-0171	TER	9/3/08	angles	0° ±2'		product family METRAL (tm)	
R	0609-0068	Cenh	03/03/09	dr	T.BRUNGARD 2/22/03		code	
				enr	M.GRAY 2/22/03	MM	size	
K	V03-0722	LP	8/22/03	chr	M.GRAY 2/22/03	scale	213	
L	V05-0398	DAI	04/29/30	appd	M.GRAY 2/22/03	1:1	sheet	
sheet index		revision	R	R	R	A		93235
		sheet	1	2	3			1 of 3

cage code
22526

ACAD

PDM: Rev:R

STATUS: Released

Printed: May 16, 2011

Tous droits strictement reserves. Reproduction ou communication a des tiers Interdite sous quelque forme que ce soit sans autorisation écrite du propriétaire. Propriete de c FCI. Droits de reproduction FCI.



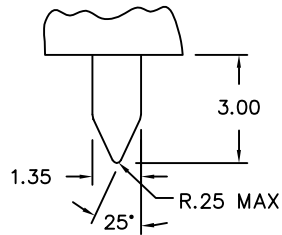
All rights strictly reserved. Reproduction or issue to third parties in any form whatever is not permitted without written authority from the proprietor. Property of FCI. Copyright FCI.

PRODUCT NUMBER	DIM "A"	TAIL LGTH DIM "B"	PCB THK. DIM "C"	PRODUCT NUMBER	DIM "A"	TAIL LGTH DIM "B"	PCB THK. DIM "C"	PRODUCT NUMBER	DIM "A"	TAIL LGTH DIM "B"	PCB THK. DIM "C"
93235-X11	-	2.65	1.6	93235-X12	-	3.45	2.4	93235-X13	-	4.25	3.2
93235-X21	23.95 REF.	2.65	1.6	93235-X22	23.95 REF.	3.45	2.4	93235-X23	23.95 REF.	4.25	3.2
93235-X31	47.95 REF.	2.65	1.6	93235-X32	47.95 REF.	3.45	2.4	93235-X33	47.95 REF.	4.25	3.2
93235-X41	95.95 REF.	2.65	1.6	93235-X42	95.95 REF.	3.45	2.4	93235-X43	95.95 REF.	4.25	3.2
93235-X31S (8)	47.95 REF.	2.65	1.6								
93235-X41S (8)	95.95 REF.	2.65	1.6								

*SEE NOTE 10 FOR LEAD FREE OPTION

PRODUCT NUMBER	DIM "A"	TAIL LGTH DIM "B"	DIM "C"	ROW	Configurationoan TERMINAL IN POSITION (X)						
					6	5	4	3	2	1	
93235-X14/X14LF	-	3.45	2.4	D	X	X	X	X	X	X	
				C	X	X	X	X	X	-	
				B	X	X	X	X	X	X	
				A	X	X	X	X	X	X	

"-" POSITION NOT LOADED
"X" POSITION LOADED



VIEW E, NOTE 8
SCALE 2:1

NOTES:

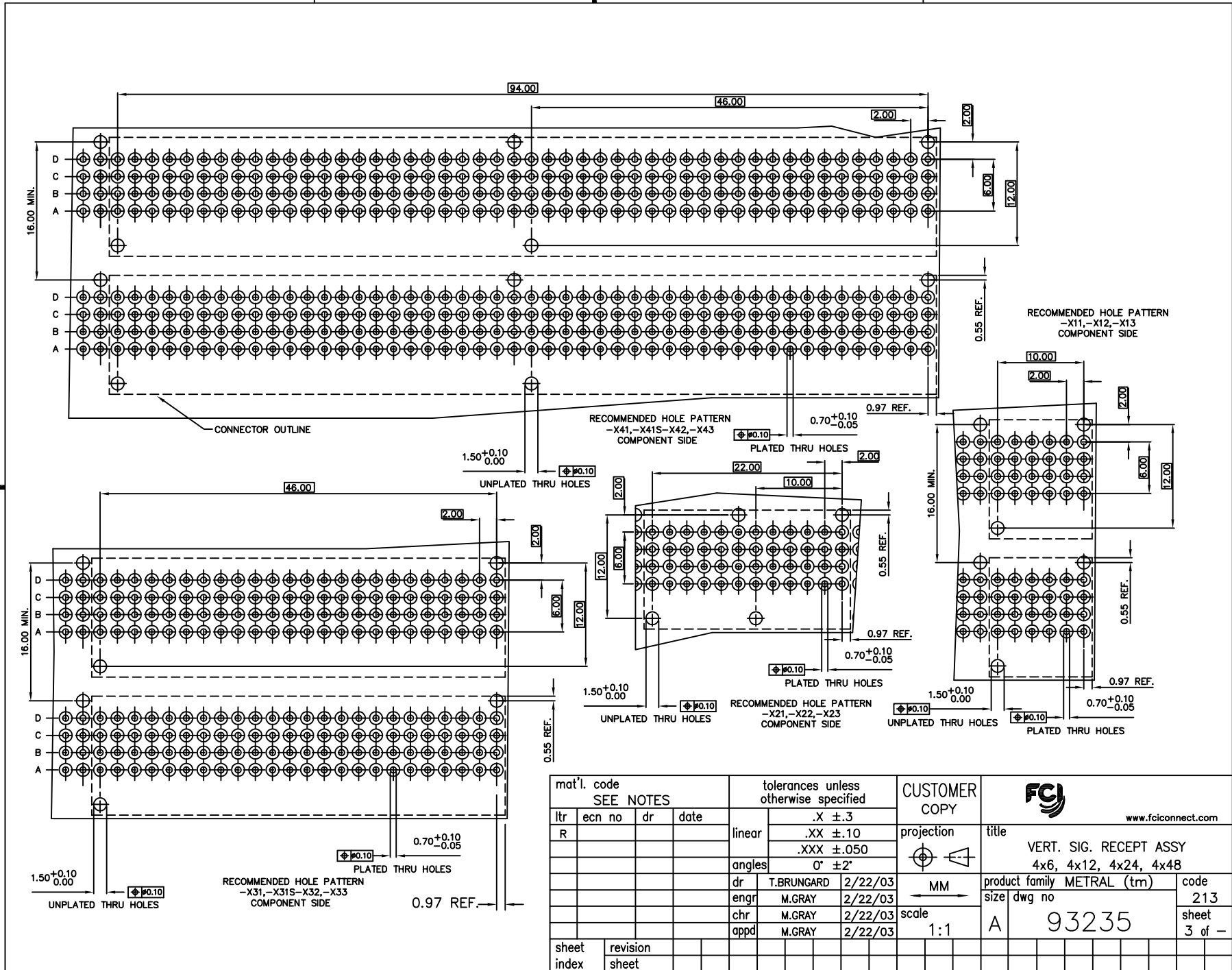
- BODY MATERIAL: LCP 30% GLASS
FLAME RETARDANT ACC. UL 94-VO
- TERMINAL MATERIAL: PHOSPHOR BRONZE
- PLATING SOLDER TAILS
93237-YYY 1.0-2.0 μm SnPb TIN LEAD
93237-YYLF 1.0-2.0 μm Sn (LEAD FREE)
- APPLICATION SPECIFICATIONS:
BUS-20-059
GS-20-001
- PRODUCT MARKING: (PART NUMBER & LOT CODE).
- INDICATED HOLES ARE UNPLATED
- DIAMOND LOCATION PEG ARE ONLY EXISTED ON THE BOTH SIDES OF PRODUCT.
- PRODUCT WITH AN "S" SUFFIX WILL HAVE A SPECIAL ALIGNMENT POST AS SPECIFIED PER DETAIL E, SHEET 2.
EXAMPLE/LEAD FREE OPTION: 93235-YYSLF
- THESE PRODUCTS WHERE PART NUMBERS ENDS IN "LF" MEET THE EUROPEAN UNION DIRECTIVES AND OTHER COUNTRY REGULATIONS AS DESCRIBED IN GS-22-008.
- FOR PLATING SPEC, REFER TO DRAWING 10097866.
FOR LEAD FREE PART NUMBERS ADD "LF" SUFFIX. EXAMPLE 93235-YYLF
- ALL PRODUCTS WILL WITHSTAND EXPOSURE TO 240°C FOR 60 SECONDS IN A CONVECTION, INFAR-RED OR VAPOR PHASE REFLOW OVEN.

mat'l. code SEE NOTES				tolerances unless otherwise specified				CUSTOMER COPY		 www.fciconnect.com			
ltr	ecn no	dr	date	linear	.X ±.3			projection		title			
R					.XX ±.10					VERT. SIG. RECEIPT ASSY			
				angles	.XXX ±.050				4x6, 4x12, 4x24, 4x48				
					0° ±2°				product family METRAL (tm)				
				dr	T.BRUNGARD	2/22/03	scale	1:1	size		dwg no		code
				enr	M.GRAY	2/22/03			A		93235		213
				chr	M.GRAY	2/22/03							sheet
				appd	M.GRAY	2/22/03							2 of -
sheet index	revision sheet												

Tous droits strictement réservés. Reproduction ou communication à des tiers interdite sous quelque forme que ce soit sans autorisation écrite du propriétaire. Propriété de c FCI. Droits de reproduction FCI.



All rights strictly reserved. Reproduction or issue to third parties in any form whatever is not permitted without written authority from the proprietor. Property of FCI. Copyright FCI.



mat'l. code SEE NOTES				tolerances unless otherwise specified		CUSTOMER COPY		 www.fciconnect.com	
ltr	ecn no	dr	date	linear	.X ±.3	projection		title	
R					.XX ±.10			VERT. SIG. RECEIPT ASSY	
				angles	.XXX ±.050			4x6, 4x12, 4x24, 4x48	
					0° ±2'			product family METRAL (tm)	
				dr	T.BRUNGARD 2/22/03	MM		size	213
				enr	M.GRAY 2/22/03	←		dwg no	
				chr	M.GRAY 2/22/03	→		A	93235
				appd	M.GRAY 2/22/03	scale			
sheet	revision					1:1			3 of -
index	sheet								

Mouser Electronics

Authorized Distributor

Click to View Pricing, Inventory, Delivery & Lifecycle Information:

[FCI / Amphenol:](#)

[93235-111LF](#) [93235-112LF](#) [93235-113LF](#) [93235-121LF](#) [93235-123LF](#) [93235-131LF](#) [93235-133LF](#) [93235-141LF](#)
[93235-142LF](#)