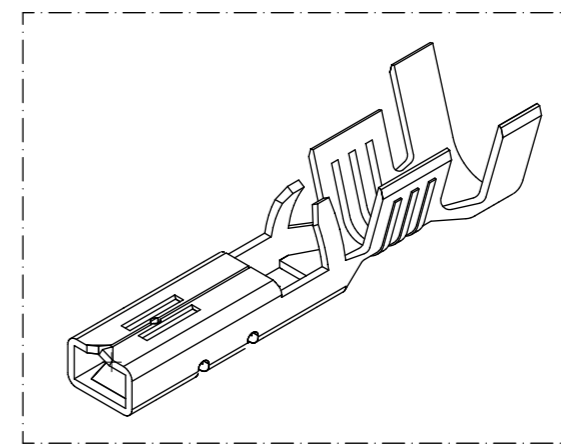
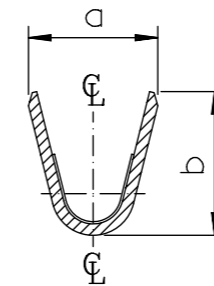
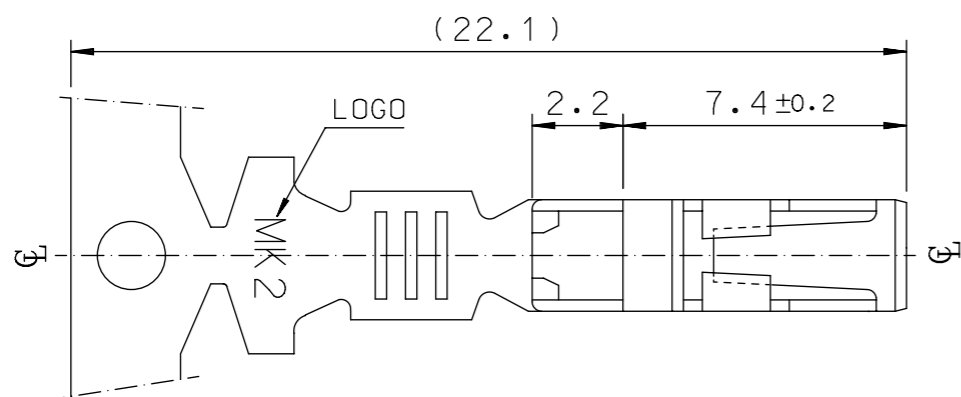
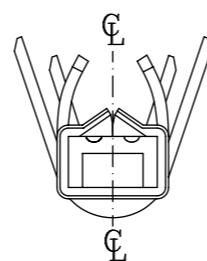
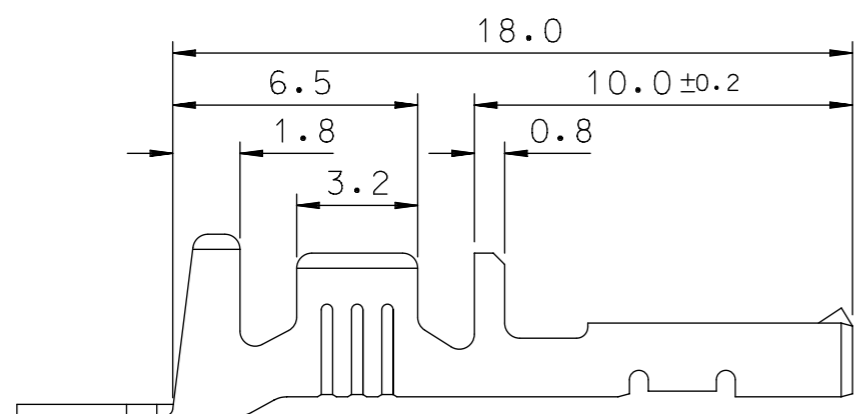


SEC' : B-B''

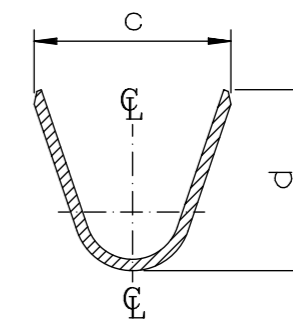
- NOTES
1. MATERIAL : PHOSPHOR BRONZE
0.3mm THICKNESS
 2. FINISH : PRE-PLATED TIN
 3. RECOMMENDED LENGTH OF WIRE STRIP IS 4.0-4.8mm.



ISOMETRIC VIEW



SEC' : C-C''

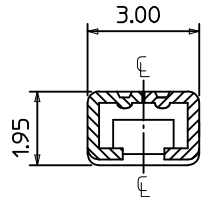
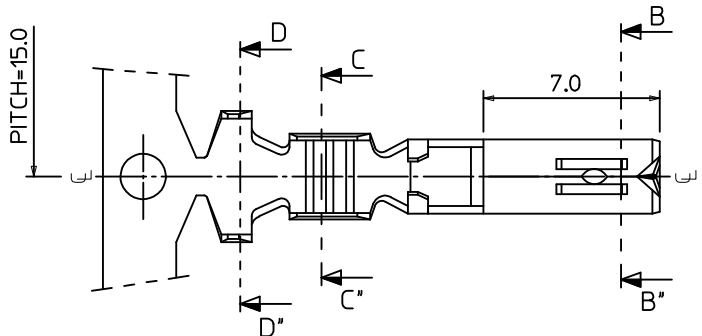


SEC' : D-D''

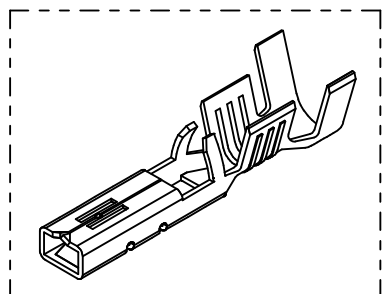
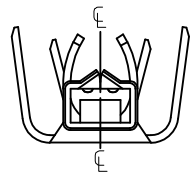
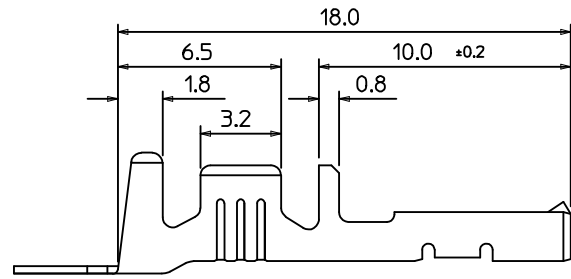
MATERIAL NO	ENG. No.	AWG	a	b	c	d	P
357480210	35748-0210	#18-#14	3.4	3.8	5.2	4.8	12.0
357480110	35748-0110	#22-#20	2.85	2.8	4.2	4.0	10.6
357480410	35748-0410	#24	2.2	1.75	3.85	3.5	10.6

SYMBOLS DIMENSION UNITS: mm SCALE: 5:1 GENERAL TOLERANCES (UNLESS SPECIFIED): ANGULAR TOL ± 1.0° 4 PLACES ± 3 PLACES ± 2 PLACES ± 0.3 1 PLACE ± 0.3 0 PLACES ± DRAFT WHERE APPLICABLE MUST REMAIN WITHIN DIMENSIONS THIRD ANGLE PROJECTION	THIS DRAWING CONTAINS INFORMATION THAT IS PROPRIETARY TO MOLEX ELECTRONIC TECHNOLOGIES, LLC AND SHOULD NOT BE USED WITHOUT WRITTEN PERMISSION		CURRENT REV DESC:			
	EC NO: 605910		2018/10/11			.070 FEMALE TERMINAL (B-TYPE)
	DRWN: JSSHIN		2018/10/15			
	CHK'D: SHCHU		2018/10/16			
APPR: YSKIM02		INITIAL REVISION:		PRODUCT CUSTOMER DRAWING		
DRWN: BKCHOI		1992/11/17		DOCUMENT NUMBER	DOC TYPE DOC PART REVISION	
APPR: CWLEE		1992/11/17		SD-35748-001	PSD 001 F2	
DRAWING: A3-SIZE		SERIES: 35748	MATERIAL NUMBER: SEE TABLE	CUSTOMER: GENERAL MARKET	SHEET NUMBER: 1 OF 1	

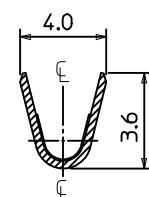
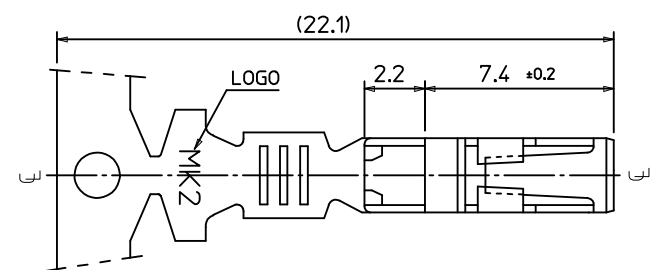
DOCUMENT STATUS	RELEASE DATE
-----------------	--------------



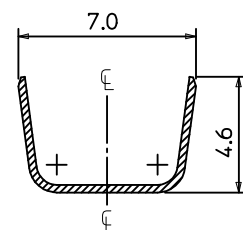
SEC' : B-B'



ISOMETRIC VIEW



SEC' : C-C'



SEC' : D-D'

NOTES

1. MATERIAL : PHOSPHOR BRONZE
0.3mm THICKNESS
2. FINISH : PRE-PLATED TIN
3. RECOMMENDED LENGTH OF WIRE STRIP IS 4.0-4.8mm.
- ④ 4. APPLICABLE WIRE SIZE : AWG #20+#20
AWG #20+#18
AWG #18+#18

REVISED EC NO: KOR2016-0060 DRWN: JSSHIN 2015/12/24 CHKD: SHCHU 2015/12/28 APPR: YSK1M02 2015/12/30	DESCRIPTION 1	QUALITY SYMBOLS	GENERAL TOLERANCES (UNLESS SPECIFIED)	DIMENSION STYLE	SCALE	DESIGN UNITS	THIRD ANGLE PROJECTION
		$\nabla=0$ $\nabla C=0$	mm INCH	MM ONLY	5:1	METRIC	
		4 PLACES ± --- ± --- 3 PLACES ± --- ± --- 2 PLACES ± 0.3 ± --- 1 PLACE ± 0.3 ± --- ANGULAR ± 1°	DRAWN BY: BKCH01 CHECKED BY: BKCH01 APPROVED BY: YSK1M02 MATERIAL NO.: 357480310	DATE: 1992/11/17 DATE: 1992/11/17 DATE: 2015/12/30	TITLE: .070 FEMALE TERMINAL (B-TYPE) MOLEX INCORPORATED	SHEET NO.: 1 OF 1	
		DRAFT WHERE APPLICABLE MUST REMAIN WITHIN DIMENSIONS	SIZE: A3 THIS DRAWING CONTAINS INFORMATION THAT IS PROPRIETARY TO MOLEX INCORPORATED AND SHOULD NOT BE USED WITHOUT WRITTEN PERMISSION				