

SAFETY ORGANIZATION(S)

THIS FILTER HAS BEEN FORMALLY RECOGNIZED, CERTIFIED OR APPROVED BY THE LISTED AGENCY. THEREFORE, ALL TEST/REQUIREMENTS SPECIFIED IN THE LATEST REVISION OF THE FOLLOWING AGENCY STANDARDS HAVE BEEN MET.

- UL 544
- CSA 22-2, NO. 0.0.4, 8
- VDE 0565-3

OPERATING SPECIFICATIONS

- LINE VOLTAGE/CURRENT, 10 AMP., 120/250 VAC
- 50-60Hz
- LINE FREQUENCY, 2pA @ 120V 60Hz
- MAX. LEAKAGE CURRENT, EACH LINE TO GROUND 5pA @ 250V 50Hz
- OPERATING AMBIENT TEMP. RANGE, -10°C TO +40°C @ RATED CURRENT, I_r
- IN AN AMBIENT, T_a, HIGHER THAN 40°C, THE MAXIMUM OPERATING CURRENT, I_o, IS AS FOLLOWS:

$$I_o = I_r \sqrt{\frac{85 - T_a}{45}}$$

RELIABILITY SPECIFICATIONS

- STORAGE TEMPERATURE, -25°C TO +85°C
- HUMIDITY, 21 DAYS @ 40°C 95% RH
- CURRENT OVERLOAD TEST, 5 TIMES RATED CURRENT FOR 8 SECONDS

TEST SPECIFICATIONS

- INDUCTANCE, L-9.5mH NOMINAL
- CAPACITANCE, (MEASURED @ 1 KHz, 0.25 VAC MAX., 25°C ±1°C) N-9.57mH NOMINAL
- LINE TO LINE, 1.77µF ±20%

- DISCHARGE RESISTOR, 165KΩ
- LINE/GROUND AND LINE/LINE, 6000 MΩ (MIN) AT 100 VDC
- INSULATION RESISTANCE, 20°C AND 50% RH
- (W/O DISCHARGE RESISTOR)

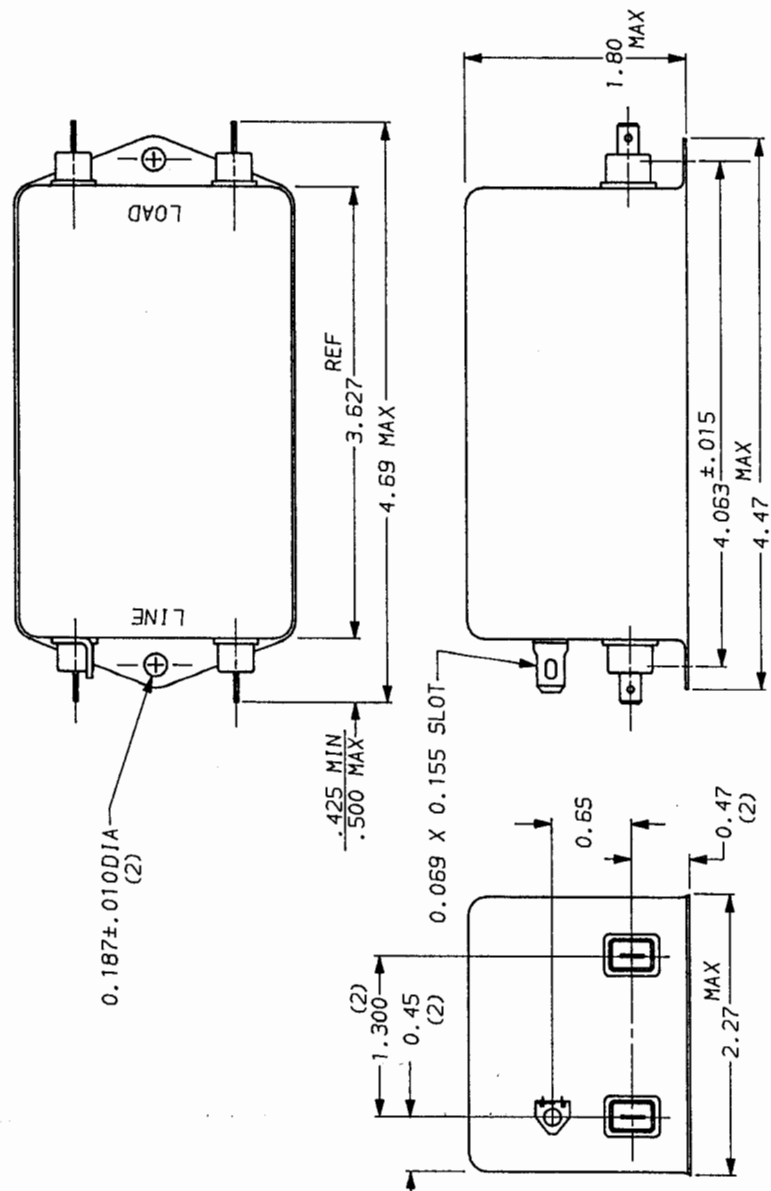
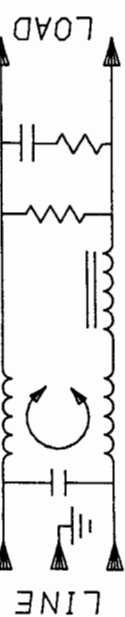
RECOMMENDED RECEIVING INSPECTION HIPOT.

- LINE TO GROUND, 2250 VDC FOR 1 MINUTE
- LINE TO LINE, 1450 VDC FOR 1 MINUTE

FILTER APPROVAL:
 THE BEST WAY TO SELECT AND QUALIFY A FILTER IS FOR YOUR ENGINEERING TO TEST THE UNIT IN YOUR EQUIPMENT.

50Ω - 50Ω (MINIMUM) INSERTION LOSS									
FREQUENCY	0.1	0.2	0.5	1.5	5	10	20	30	
MHz									
COMMON	9	15	24	36	42	34	22	11	14
dB									
DIFF.	7	8	17	52	70	70	65	55	40
dB									

This document is proprietary to CORCOM INC. and is not to be reproduced nor used for manufacturing purposes except on CORCOM's order or prior written consent.



TOLERANCE EXCEPT AS NOTED
 DECIMAL, .XXX .XX .X ANGLES
 ENGLISH, ±.025 ± 1°
 METRIC, ±
 MATERIAL: AS SUPPLIED
 FINISH:

corcom
 LIBERTYVILLE, IL 60048

POWER LINE FILTER

SCALE: NTS 7-21-92
 DATE: 7-21-92
 DRAWN BY: CFM
 DESIGNED BY: CFM
 REV. NO. 10EHT1.01

Mouser Electronics

Authorized Distributor

Click to View Pricing, Inventory, Delivery & Lifecycle Information:

[TE Connectivity:](#)

[10EHT1](#)