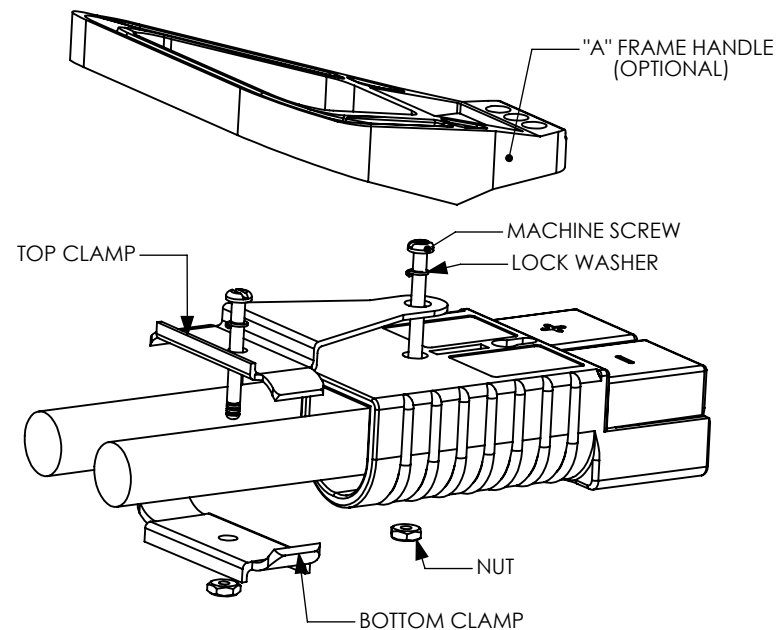
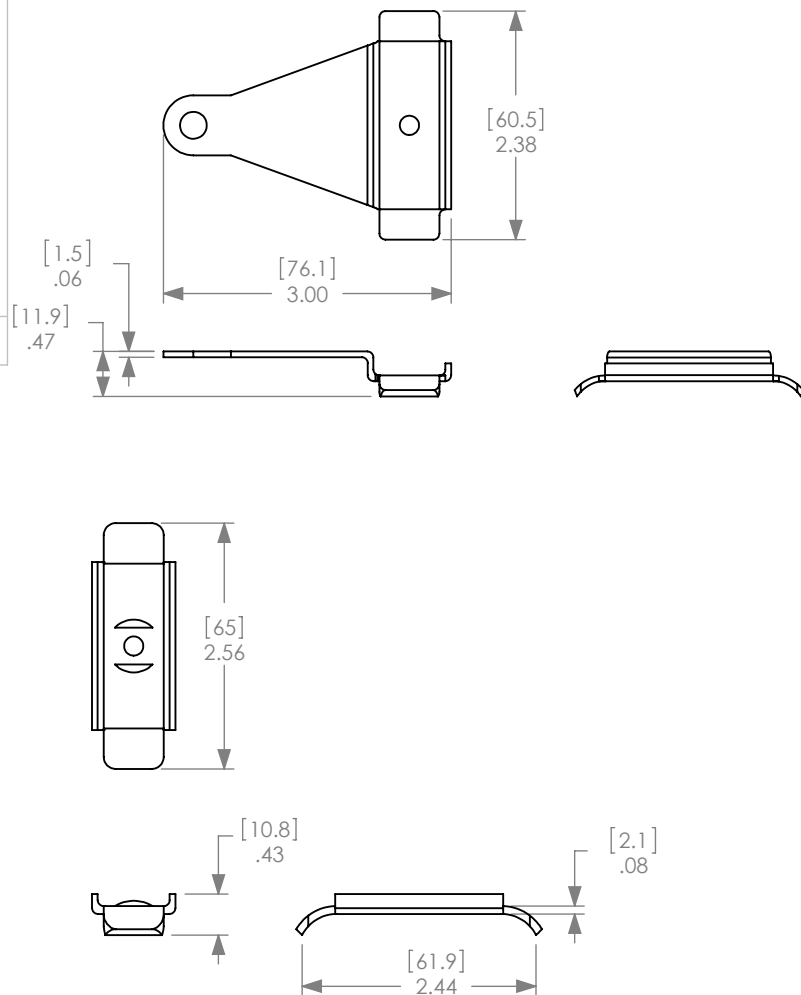


THE INFORMATION CONTAINED IN THIS DRAWING IS THE SOLE PROPERTY OF ANDERSON POWER PRODUCTS. ANY REPRODUCTION IN PART OR WHOLE WITHOUT THE WRITTEN PERMISSION OF ANDERSON POWER PRODUCTS IS PROHIBITED.

REV.	DESCRIPTION OF CHANGES	BY:	DATE	
			3-	8-11
1	ECRN-14849 CLAMP THICKNESS DIMENSION	TWE		



ITEM NO.	PART OR IDENTIFYING NO.	NOMENCLATURE OR DESCRIPTION	MATERIAL SPECIFICATION	QTY REQD
COPYRIGHT 2000 ANDERSON POWER PRODUCTS. ALL RIGHTS RESERVED. UNAUTHORIZED REPRODUCTION HEREBY PROHIBITED.				
DIMENSIONS ARE IN INCHES DIMENSIONS IN PARENTHESES [ ] ARE IN MILLIMETERS  TOLERANCES ARE: 2PL- $\pm .02$ [ $\pm .5$ ]  MATERIALS: SEE NOTES  FINISH SEE NOTES  DO NOT SCALE DRAWING		CAD GENERATED DRAWING, DO NOT MANUALLY UPDATE		ANDERSON POWER PRODUCTS  CATALOG NUMBER 996G1 SB350 CABLE CLAMP FOR TWO SINGLE CONDUCTOR CABLES
		APPROVALS	DATE	
NEXT ASSY		DRAWN CMS	2/9/00	SIZE A
USED ON		CHECKED DJD	2/10/00	
APPLICATION		RESP ENG UFN	5/8/00	SPECIFICATION: 114231S1
		MFG ENG CHB	4/28/00	
		QUAL ENG RPO	5/8/00	REV. 1
		SCALE NONE	CADFILES/01193	SHEET 1 OF 1

# Mouser Electronics

Authorized Distributor

Click to View Pricing, Inventory, Delivery & Lifecycle Information:

[Anderson Power Products:](#)

[996G1](#)