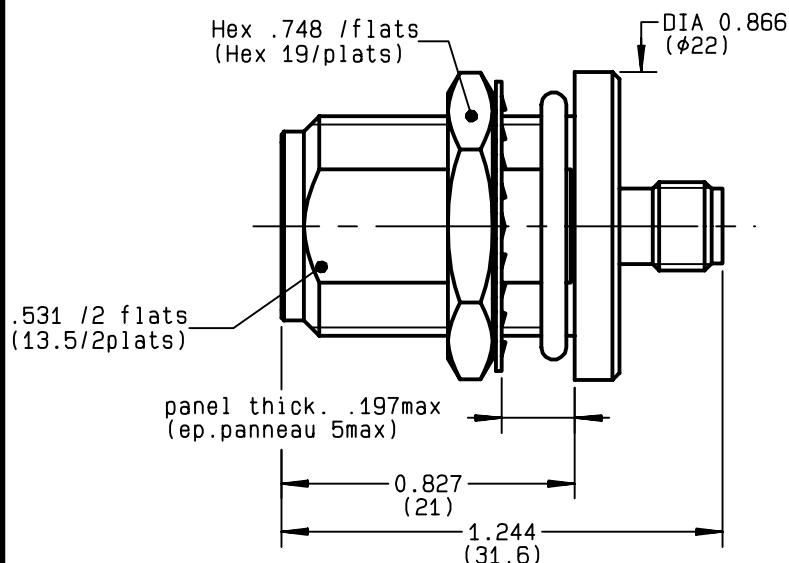
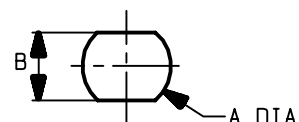


**N FEMALE BULKHEAD - SMA FEMALE STRAIGHT  
PANEL SEAL+ INTERNAL ADAPTER**
**R191.334.000**  
**SERIES ADAPT**

**PERCAGE PANNEAU**  
**MOUNTING HOLE**


	MM		INCH	
	maxi	mini	maxi	mini
A	16.1	16	0.634	0.63
B	13.7	13.6	0.539	0.535

NOMINAL IMPEDANCE	<b>50</b>	$\Omega$
FREQUENCY RANGE	<b>0-11</b>	GHz
TEMPERATURE RATING	<b>-55/+155</b>	$^{\circ}\text{C}$
V.S.W.R	<b>1.30</b> +	<b>0</b> x F(GHz)Maxi
RF INSERTION LOSS	<b>0.125</b>	$\sqrt{F}$ (GHz) dB Maxi
VOLTAGE RATING	<b>500</b>	Veff Maxi
DIELECTRIC WITHSTANDING VOLTAGE	<b>1000</b>	Veff Mini
INSULATION RESISTANCE	<b>5000</b>	M $\Omega$ Mini
HERMETIC SEAL	<b>NA</b>	Atm.cm <sup>3</sup> /s
LEAKAGE (pressurized only)	<b>IP67</b>	
MECHANICAL DURABILITY	<b>500</b>	Cycles
WEIGHT	<b>30.7</b>	gr
SPECIFICATION		

CABLES :

OTHERS CHARACTERISTICS

CABLE RETENTION		N Mini
CENTER CONTACT RETENTION		
Axial force - mating end	<b>27</b>	N Mini
Axial force - opposite end	<b>27</b>	N Mini
Torque	<b>NA</b>	cm.N Mini
RECOMMENDED TORQUES		
Mating	<b>NA</b>	cm.N
Panel nut	<b>500</b>	cm.N
Clamp nut	<b>NA</b>	cm.N

CONNECTOR PARTS	MATERIALS	FINISH	(all values are given in micrometers)
BODY	BRASS	NICKEL 2	
OUTER CONTACT			
CENTER CONTACT	BERYLLIUM COPPER	GOLD 2.5 OVER NICKEL 2	
INSULATOR	PTFE	-	
GASKET	SILICONE RUBBER	-	
OTHERS PIECES	BERYLLIUM COPPER	NICKEL 2	

BONOMINI

ISSUE	CREATION DATE	FILE PART-NUMBER
<b>0204J00</b>	<b>31/07/1995</b>	


**RADIALL**®

The information given here is subject to change without notice.  
Design changes may be in order to improve the product.

*Connect to the future*

# Mouser Electronics

Authorized Distributor

Click to View Pricing, Inventory, Delivery & Lifecycle Information:

Radial:

[R191334000](#)