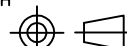


B

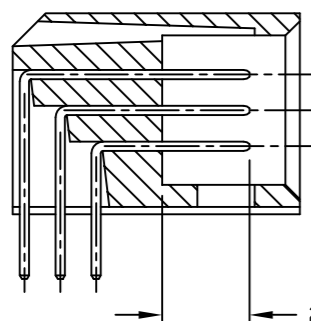
A

- B

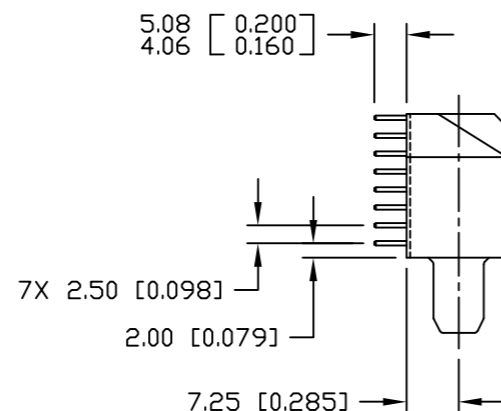
A

<div><div><div>← MM INCH →</div><div>OR MM [INCH]</div></div><div></div><div>THIRD ANGLE PROJECTION</div></div> <div>UNLESS OTHERWISE SPECIFIED DIMENSIONS ARE IN METRIC [INCHES]</div> <div>TOLERANCES</div> <div>ANGLES ± .5°</div> <div>DECIMALS</div> <div>.XX ± .25 [.010]</div> <div>.X ± .5 [.020]</div>	DRAWN R. F. A.	DATE 07/22/05	<div><div><div>tyco</div><div>Electronics</div></div><div>Tyco Electronics Corporation Menlo Park, Ca 94025</div><div>ELCON</div></div>		
	CHECKED		TITLE CONNECTOR, PIN, RIGHT ANGLE STD SOLDER TAILS, FLATPAQ PN 1766705-1		
	APPROVED				
	APPROVED				
	D. CHAU	08/03/05	SIZE	DWG NUMBER	REV.
DCA APPROVED		B	C = 1766705		A
M. ALIM	08/03/05				
ACAD FILE NUMBER		C1766705A.DWG		DWG SCALE 1 = 1	SH 1 OF 3

This drawing involves proprietary design rights of Tyco Electronics Corporation, and all design, manufacture, reproduction, use and sale rights regarding the same are expressly reserved. It is submitted for a specific purpose and the recipient by accepting this drawing, assumes custody and control and agrees to take reasonable precautions; (a) that this drawing will not be copied and reproduced, in whole or in part, or its contents revealed in any manner, or to any person except to meet the purpose for which it was delivered and (b) that any special features peculiar to this design will not be incorporated in other projects without the expressed written permission of Tyco Electronics Corporation.

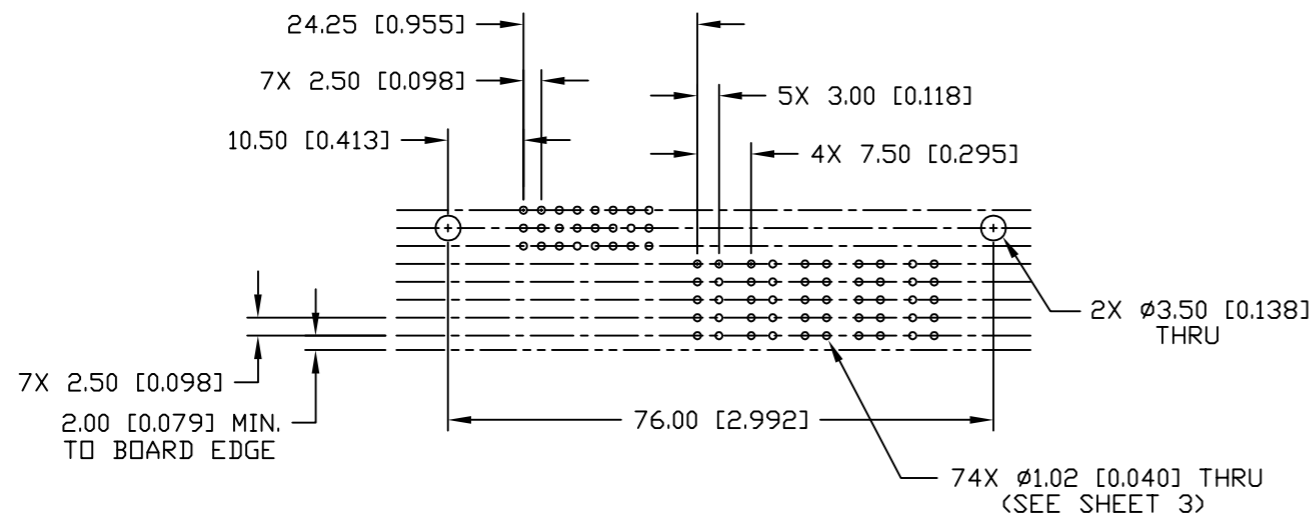


SECTION A-A



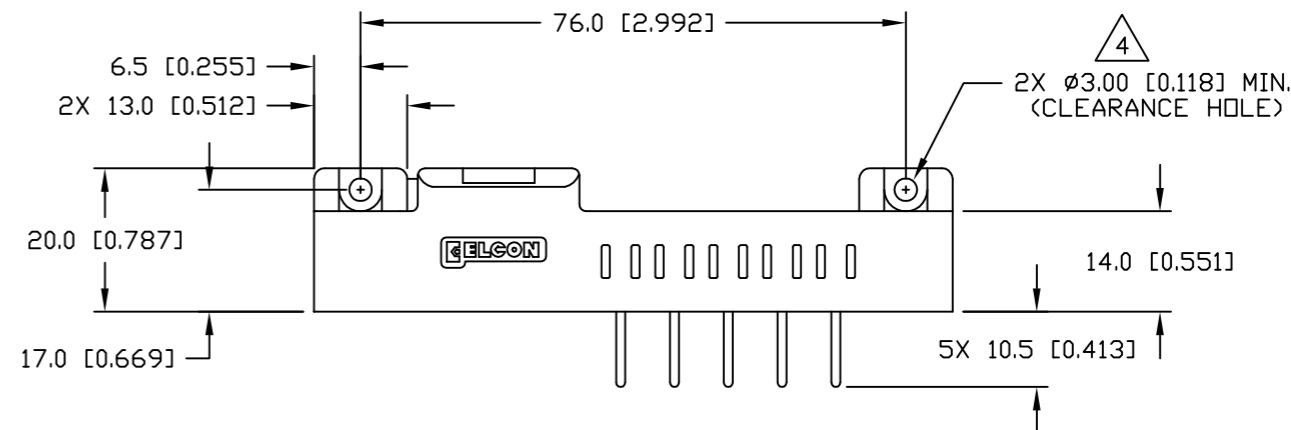
B

A

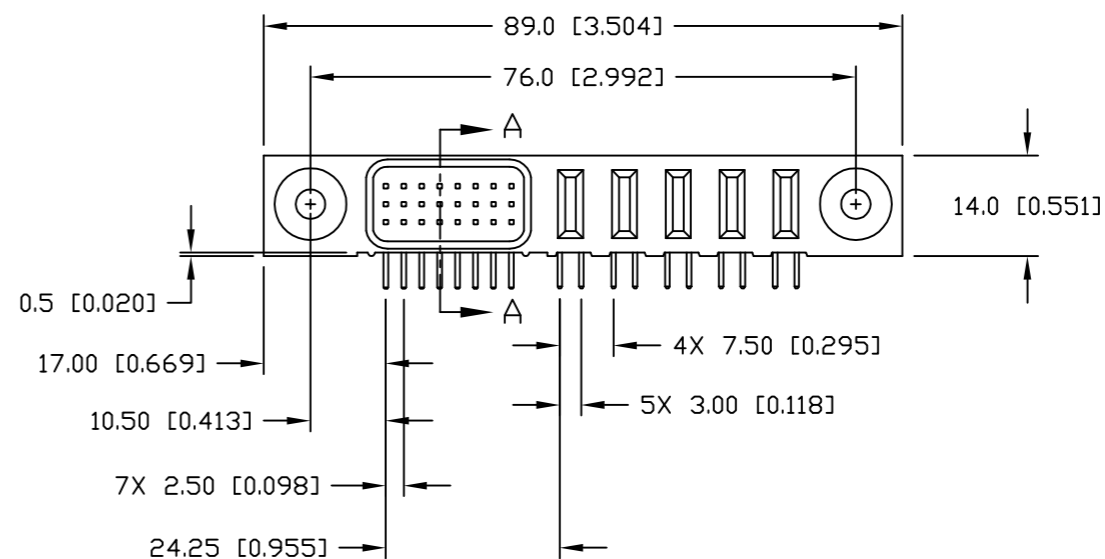


PRINTED CIRCUIT LAYOUT

REVISIONS			
EC	REV	DESCRIPTION	DATE
		SEE SHEET 1	



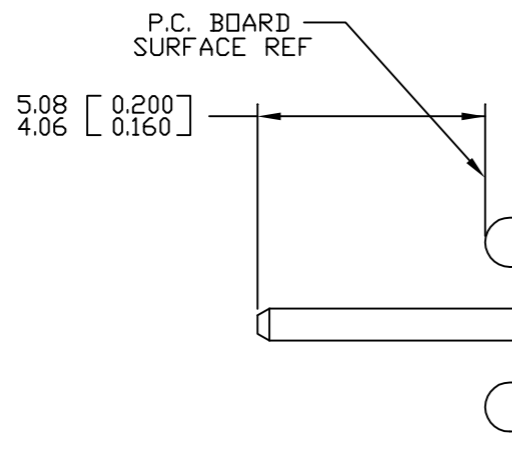
B



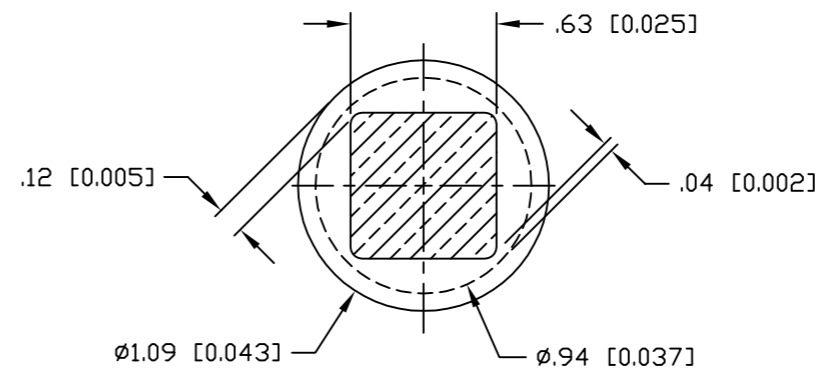
A

<div><div><div>MM ← INCH</div><div>OR MM [INCH]</div></div><div></div><div>THIRD ANGLE PROJECTION</div><div>UNLESS OTHERWISE SPECIFIED DIMENSIONS ARE IN METRIC [INCHES]</div><div>TOLERANCES</div><div>ANGLES ± .5°</div><div>DECIMALS</div><div>.XX ± .25 [.010]</div><div>.X ± .5 [.020]</div></div>	DRAWN	DATE	tyco Electronics		Tyco Electronics Corporation Menlo Park, Ca 94025		ELCON				
	R. F. A.	07/22/05	TITLE CONNECTOR, PIN, RIGHT ANGLE STD SOLDER TAILS, FLATPAQ PN 1766705-1								
	CHECKED										
	APPROVED										
	APPROVED		SIZE B								
D. CHAU	08/03/05	DWG NUMBER							REV. A		
DCA APPROVED	08/03/05	C = 1766705									
M. ALIM	08/03/05	ACAD FILE NUMBER C1766705A.DWG						DWG SCALE 1 = 1		SH 2 OF 3	

This drawing involves proprietary design rights of Tyco Electronics Corporation, and all design, manufacture, reproduction, use and sale rights regarding the same are expressly reserved. It is submitted for a specific purpose and the recipient by accepting this drawing, assumes custody and control and agrees to take reasonable precautions; (a) that this drawing will not be copied and reproduced, in whole or in part, or its contents revealed in any manner, or to any person except to meet the purpose for which it was delivered and (b) that any special features peculiar to this design will not be incorporated in other projects without the expressed written permission of Tyco Electronics Corporation.



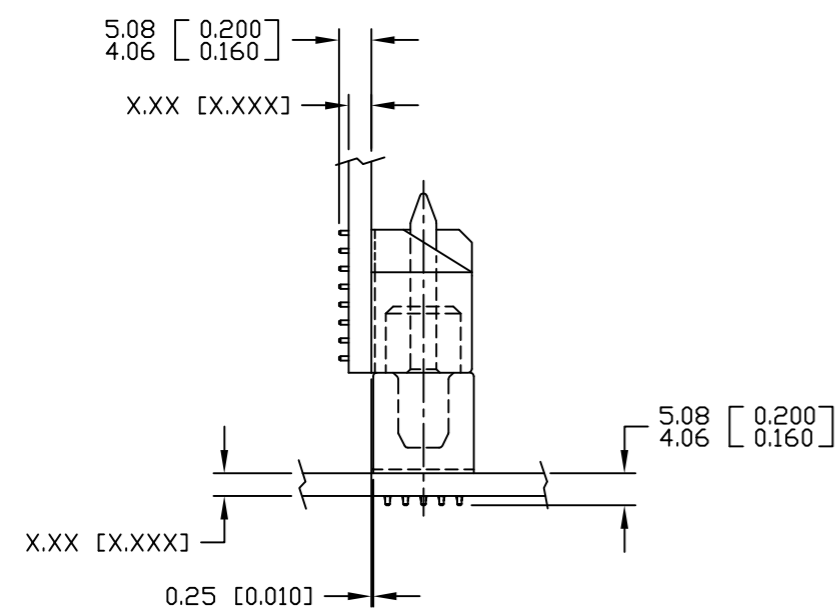
SOLDER PIN DETAIL



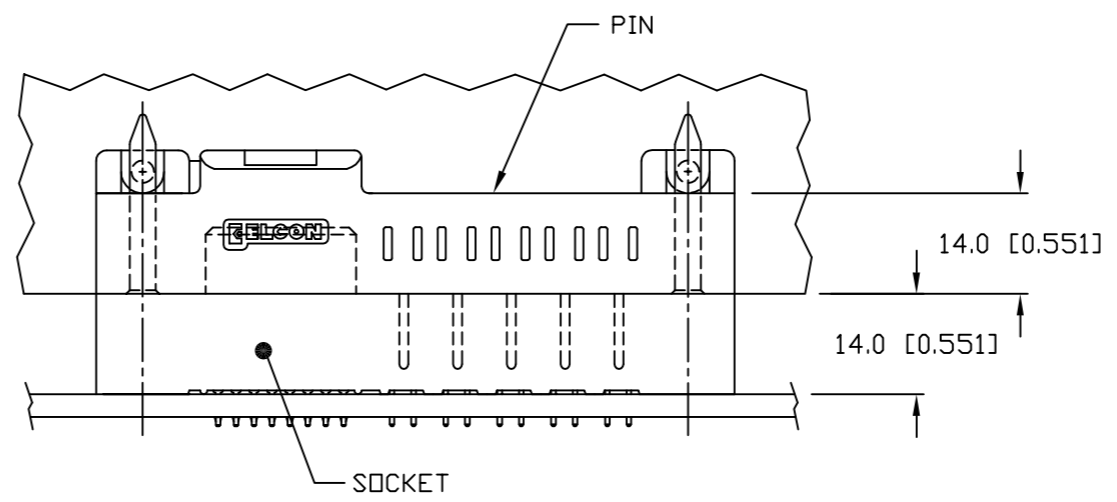
SOLDER TERMINATION AREA

RECOMMENDED PRINTED CIRCUIT HOLE

- FINISHED HOLE: ø1.02 [0.040] ±.08 [0.003]
- DRILLED HOLE: ø1.15 [0.0453] ±.013 [0.0005]
- COPPER PLATE: .025 [0.0010] MINIMUM (PER SURFACE)
- TIN PLATE: .008 [0.0003] MINIMUM (PER SURFACE)



MATED CONDITION



<div>MM OR MM [INCH]</div> <div></div> <div>THIRD ANGLE PROJECTION</div> <div>UNLESS OTHERWISE SPECIFIED DIMENSIONS ARE IN METRIC [INCHES]</div> <div>TOLERANCES</div> <div>ANGLES ± .5°</div> <div>DECIMALS</div> <div>.XX ± .25 [.010]</div> <div>.X ± .5 [.020]</div>	DRAWN R. F. A.	DATE 07/22/05	<div> Tyco Electronics Corporation Menlo Park, Ca 94025</div> <div></div>			
	CHECKED		TITLE			
	APPROVED		USER INFORMATION SOLDER TAIL TERMINATION AND MATED CONDITION			
	APPROVED D. CHAU	08/03/05	SIZE B	DWG NUMBER C = 1766705	REV. A	
M. ALIM		08/03/05				
ACAD FILE NUMBER		C1766705A.DWG		DWG SCALE	1 = 1	SH 3 OF 3

Mouser Electronics

Authorized Distributor

Click to View Pricing, Inventory, Delivery & Lifecycle Information:

[TE Connectivity:](#)

[1766705-1](#)