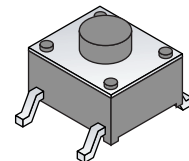
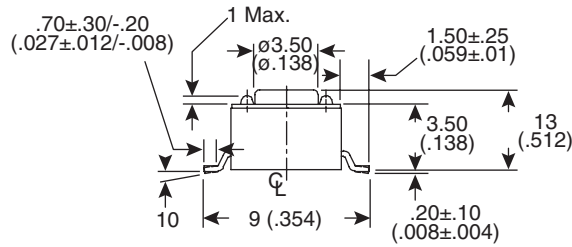
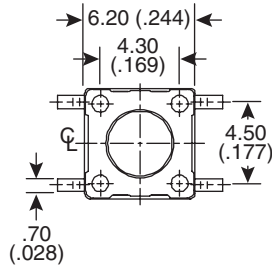
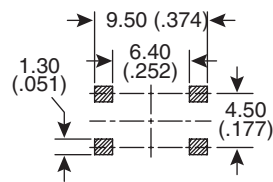


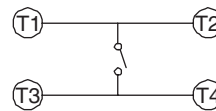
Dimensions: mm (In)



PCB Layout



Circuit Diagram



**Mechanical Specifications:**

- Operation Force: 160±50gf Brown (N)
- Stroke: (6x6) 0.25+0.2/-0.1mm
- Operation Temperature Range: -25°C to +70°C
- Storage Temperature Range: -30°C to +80°C

**Electrical Specifications:**

- Electrical Life: 300,000 cycles for 320gf, 520gf; 500,000 cycles for 260gf; 1,000,000 cycles for 100gf, 160gf
- Rating: 50mA 12VDC
- Contact Resistance: 100mΩ max.
- Insulation Resistance: 100MΩ min. at 500VDC
- Dielectric Stragth: 250VAC/minute
- Contact Arrangement: SPST

**Materials:**

- Cover: Steel, tin plated
- Base: Nylon thermoplastic, brown
- Stem: Nylon thermoplastic
- Contact Disc: Phosphor bronze with silver cladding
- Terminal: Brass with silver cladding
- Cap: Thermoplastic ABS

**Note:**

- RoHS compliant and process compatible with 260° solder.

Tactile Switch  
101-TS6324T1607-EV



# Mouser Electronics

Authorized Distributor

Click to View Pricing, Inventory, Delivery & Lifecycle Information:

[Mountain Switch:](#)

[101-TS6324T1607-EV](#)