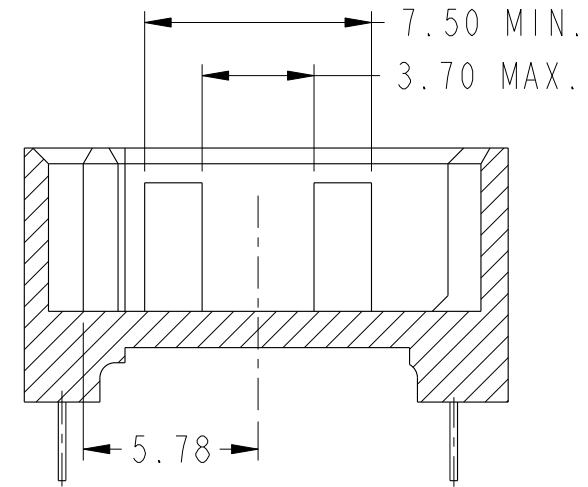
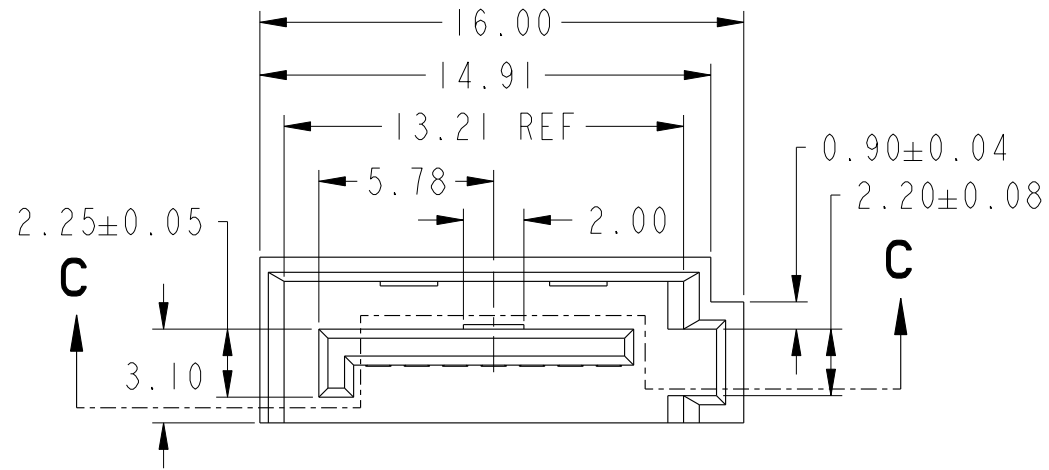
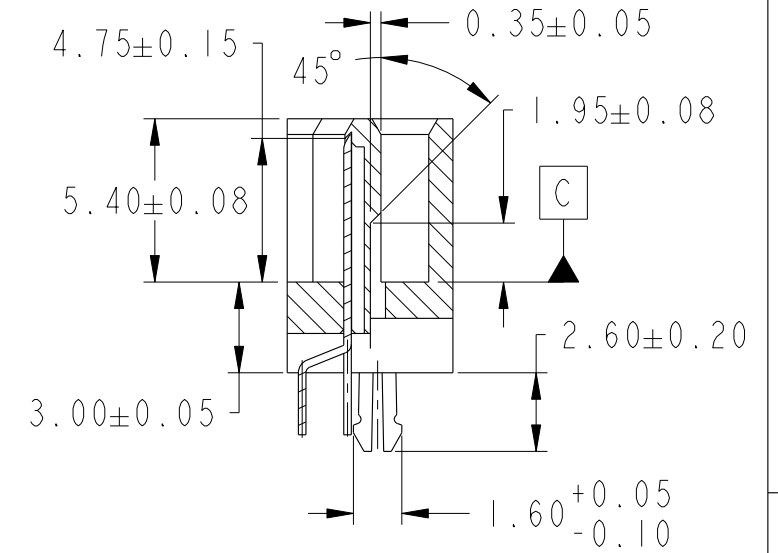


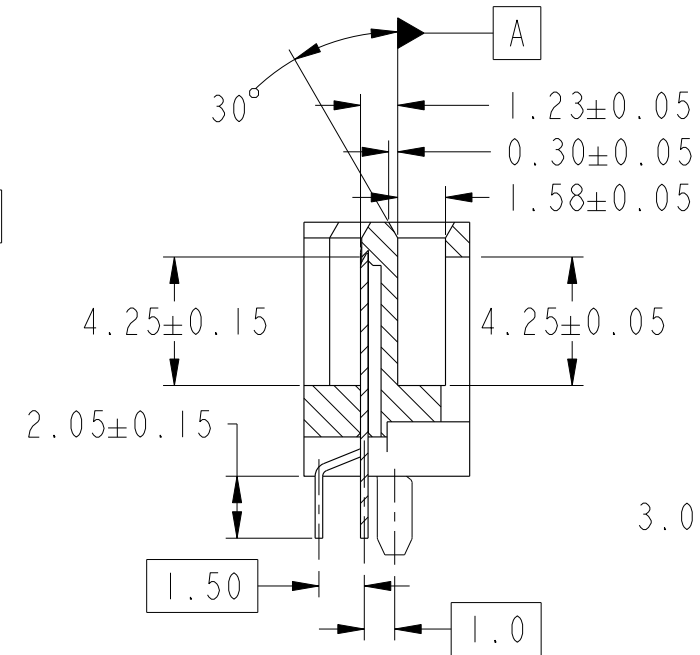
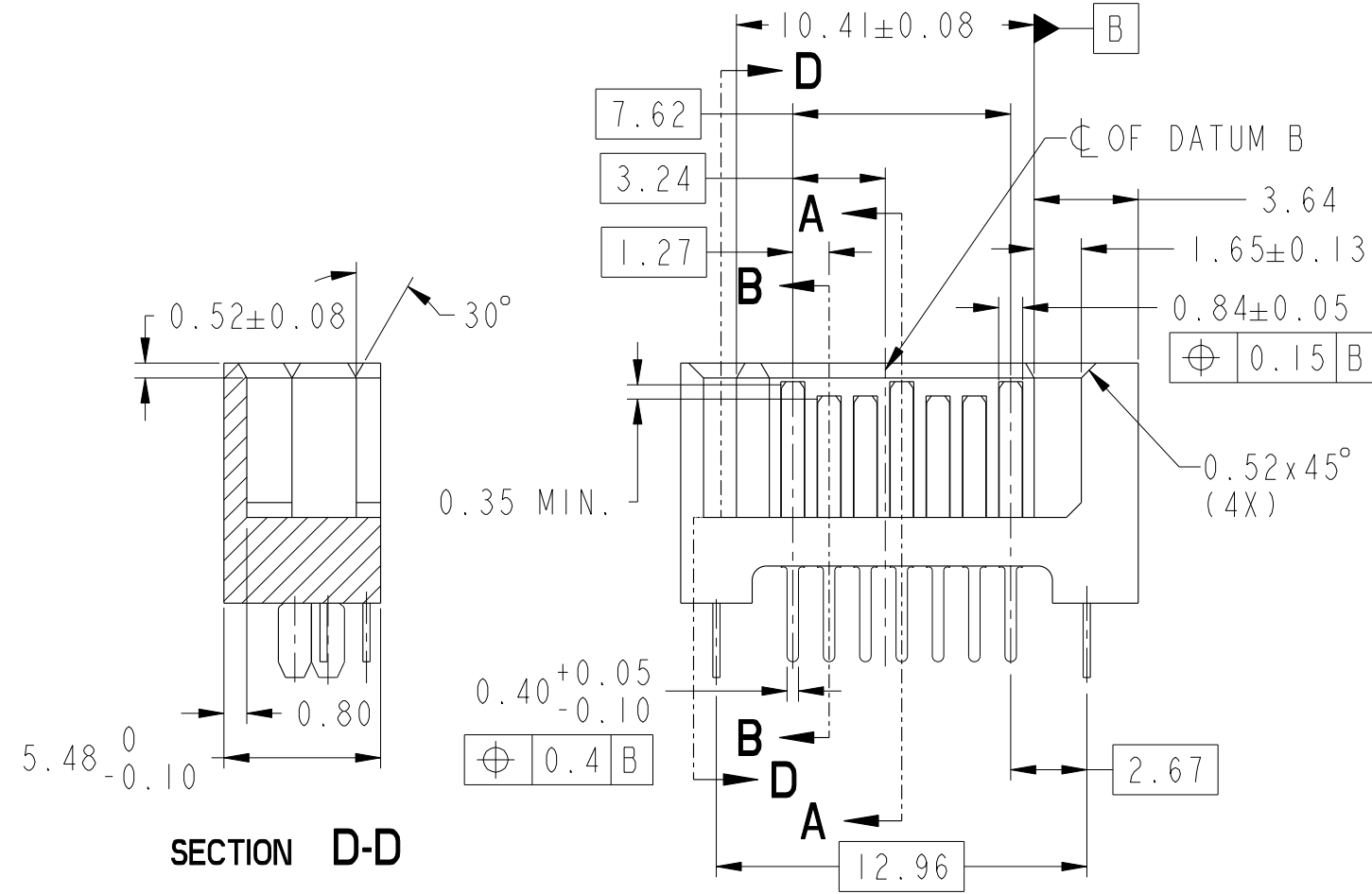
PRODUCT NO.
10035690-XXX-3W



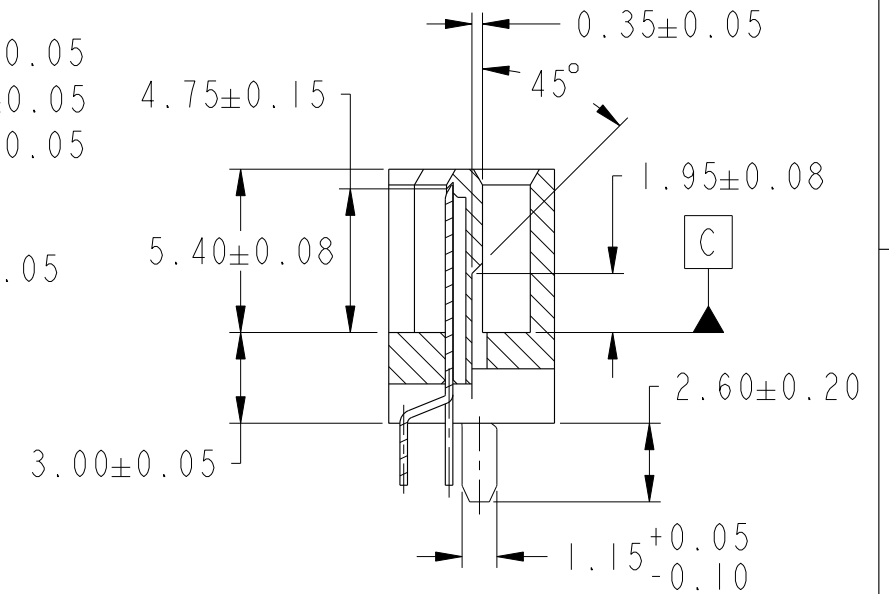
SECTION C-C



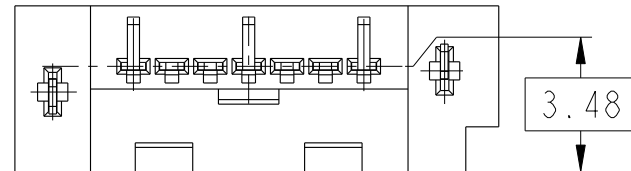
SECTION A-A
METAL CLIP A

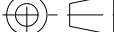




SECTION B-B

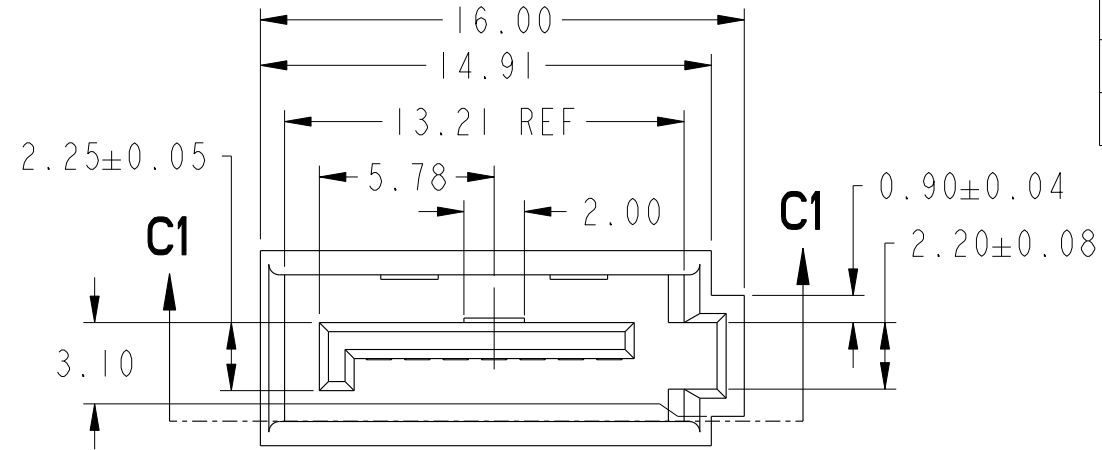


SECTION A-A
METAL CLIP B

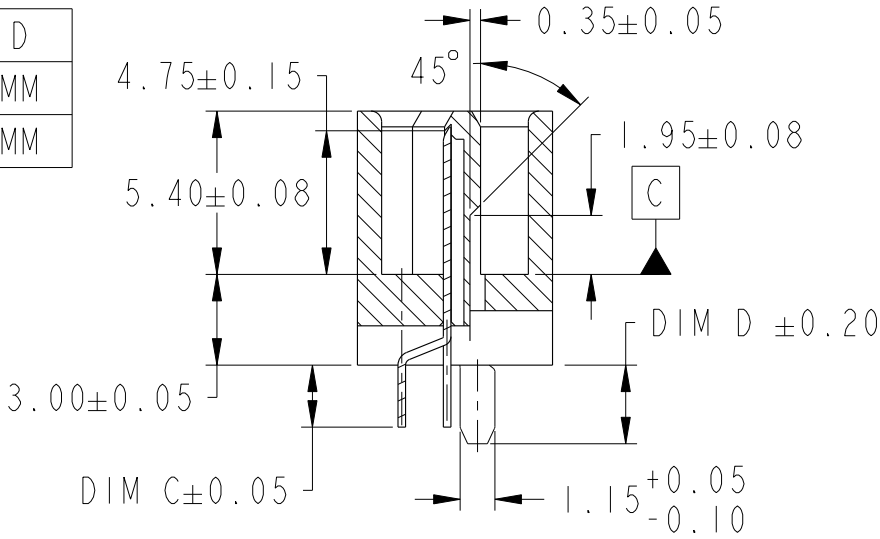


spec ref -				dr	Wade Liu	09/09/05	projection 	mm 	size	A3	scale	4:1
tolerance std	TOLERANCES UNLESS OTHERWISE SPECIFIED			eng	Wade Liu	09/09/05			ecn no	ELX-S-32119-1		
ASME Y14.5M				chr	Wade Liu	09/09/05						
				appr	Sterling Lin	09/09/05	product family		SATA		rel levelptc.wm.lifecycle.state	
surface  ASME Y14.5	linear	0.X	±0.30	Amphenol FCI	title S-ATA SIGNAL PLUG DIP VERTICAL TYPE ASSY			dwg no	10035690			rev C
		0.XX	±0.20									
		0.XXX	±0.10									
angular		0°	±2°			cat. no.	-	Product - Customer Drw			sheet 1 of 4	

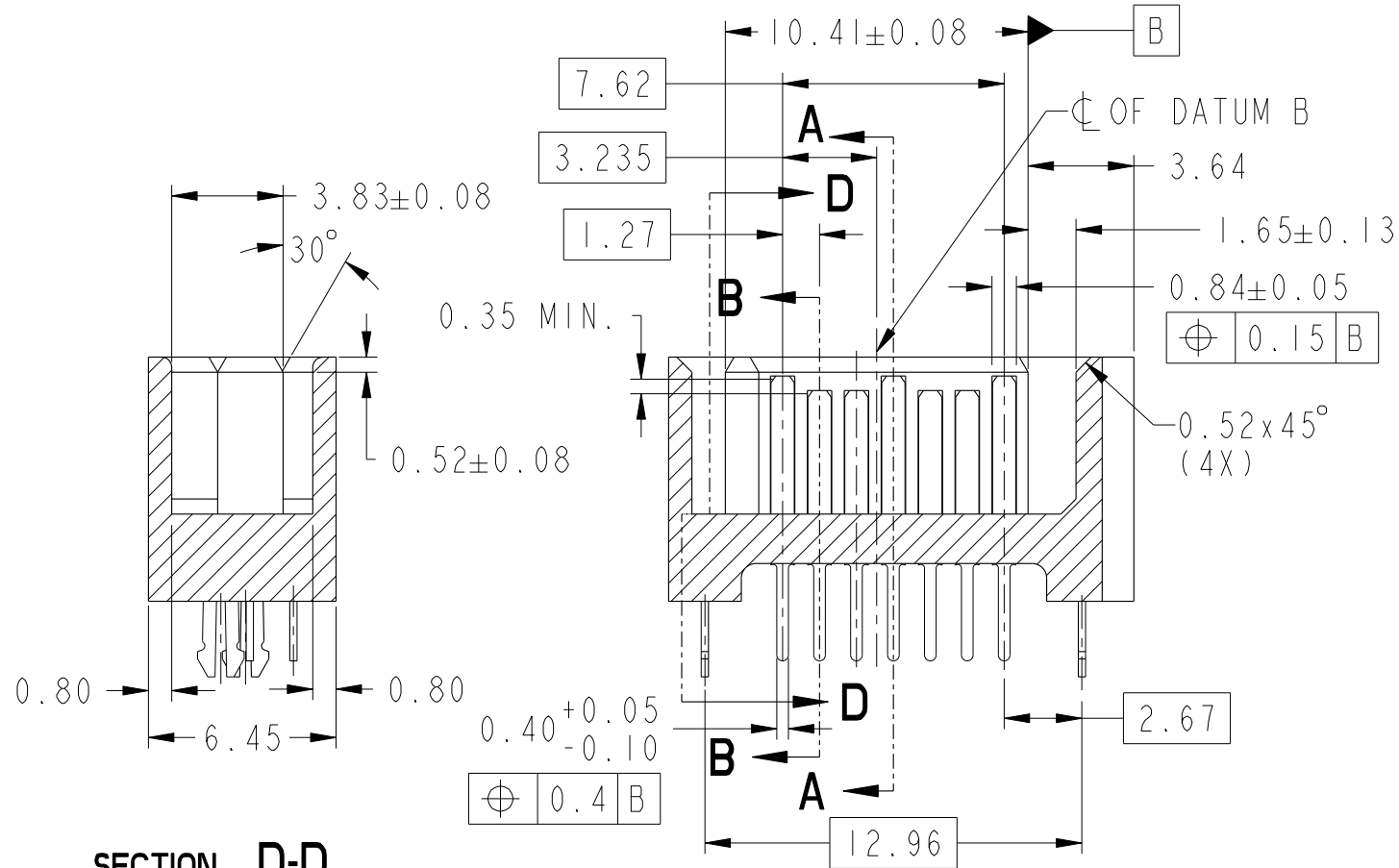
PRODUCT NO.
10035690-XXX-4W



SUFFIX	DIM C	DIM D
OTHERS	2.05MM	2.60MM
-XX4XLF	3.05MM	3.40MM

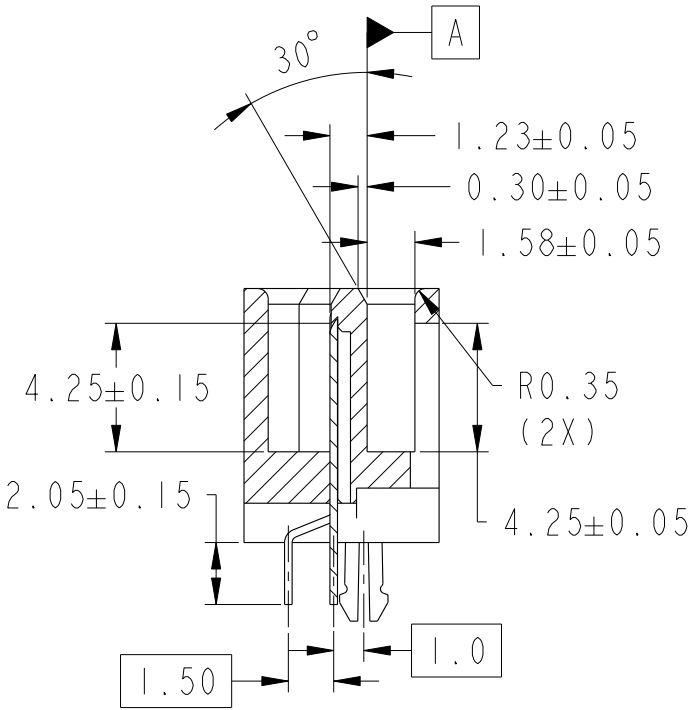


SECTION A-A
METAL CLIP B

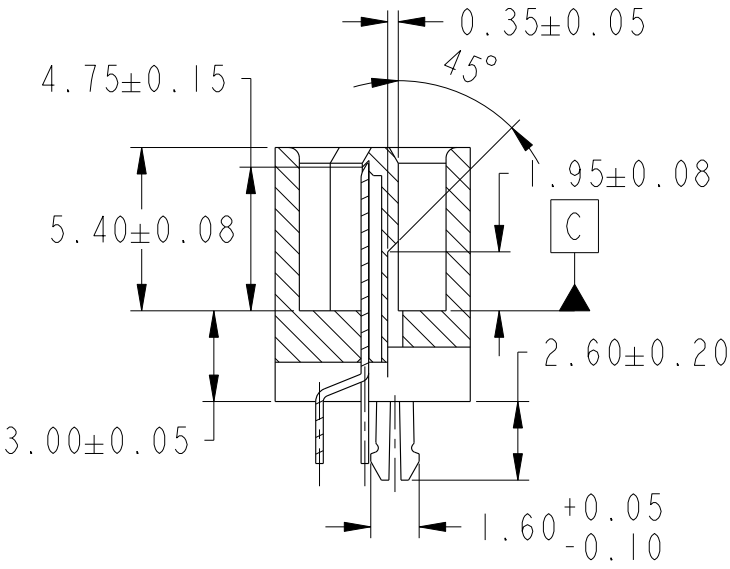


SECTION D-D

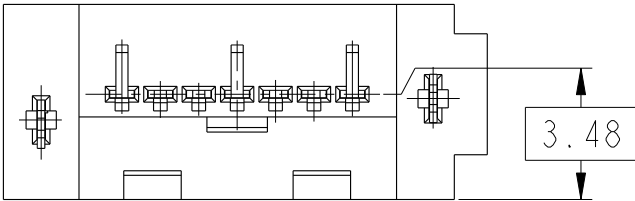
SECTION C1-C1


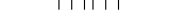



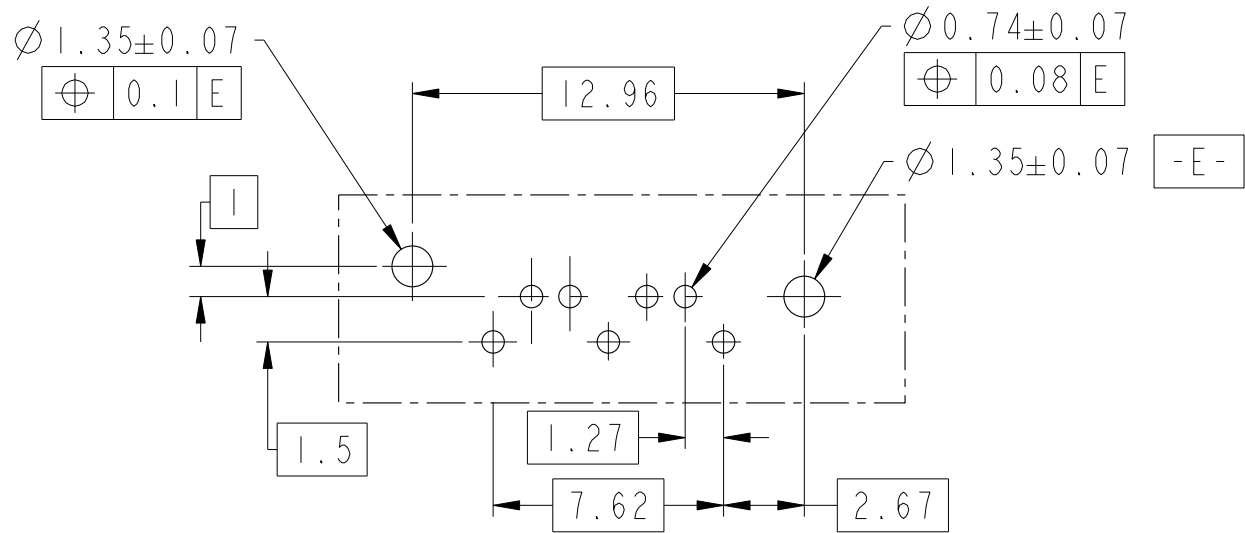
SECTION B-B



SECTION A-A
METAL CLIP A



spec ref -				dr Wade Liu		09/09/05		projection		mm		size A3		scale 4:1			
tolerance std		TOLERANCES UNLESS OTHERWISE SPECIFIED				eng Wade Liu		09/09/05									
ASME Y14.5M						chr Wade Liu		09/09/05									
						appr Sterling Lin		09/09/05								product family SATA	
surface -  ASME Y14.5		linear		0.X ±0.30		0.XX ±0.20		0.XXX ±0.10		Amphenol FCi		title S-ATA SIGNAL PLUG DIP VERTICAL TYPE ASSY		dwg no 10035690		rev C	
		angular		0° ±2°				cat. no. -		Product - Customer Drw				sheet 2 of 4			



RECOMMENDED MOUNTING LAYOUT
RECOMMENDED PCB T = 1.60MM
TOLERANCE UNLESS OTHERWISE ±0.1

10035690 - X X X - X X X

- BLANK: PLATING TIN/LEAD
LF: PLATING LEAD FREE
- 3W: 3 WALL
4W: 4 WALL
- 2: METAL CLIP A WITH 2.05MM TAIL
3: METAL CLIP B WITH 2.05MM TAIL
4: METAL CLIP B WITH 3.05MM TAIL (4W ONLY)
- Au THICKNESS OF CONTACT POINT
0: 15μ" MIN
2: 3μ" MIN
1: 30μ" MIN.
- HOUSING COLOR
0: BLACK

spec ref -				dr	Wade Liu	09/09/05	projection		mm	size	A3	scale	4:1
tolerance std				eng	Wade Liu	09/09/05				ecn no	ELX-S-32119-1		
ASME Y14.5M				chr	Wade Liu	09/09/05							
TOLERANCES UNLESS OTHERWISE SPECIFIED				appr	Sterling Lin	09/09/05	product family			SATA	rel levelptc.wm.lifecycle.state		
surface	linear	0.X	±0.30	Amphenol FCI	title S-ATA SIGNAL PLUG DIP VERTICAL TYPE ASSY			dwg no	10035690		rev	C	
		0.XX	±0.20										
		0.XXX	±0.10										
ASME Y14.5		angular	0°	±2°	cat. no.		-	Product - Customer Drw			sheet 3 of 4		

NOTE:

1. MATERIAL

 i) HOUSING: PA9T UL94V-0.

 ii) TERMINAL: BRASS: C2680.

 iii) HOLD DOWN: BRASS: C2680.

2. FINISH

 i) TERMINAL: Au PLATING AT CONTACT POINT

 100μ" MIN Sn-Pb or PURE TIN PLATING AT SOLDER TAIL WITH NICKEL UNDERPLATE.

 ii) HOLD DOWN: 100-200μ" Sn-Pb or PURE TIN PLATING.

3. P/N:10035690-XXXXLF

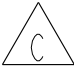
 THE HOUSING WILL WITHSTAND EXPOSURE TO 260°C PEAK TEMPERATURE FOR 10 SECONDS IN A WAVE SOLDER APPLICATION WITH 1.6MM MINIMUM THICK CIRCUIT BOARD.

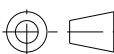
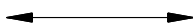

4. PACKAGING SPEC: GS-14-840.

5. PRODUCT SPEC: GS-12-194.

6. THIS PRODUCT MEETS EUROPEAN UNION DIRECTIVES AND OTHER CONUNTRY REGULATIONS AS DESCRIBED IN GS-47-0004.

7. DIMENSIONS WITH AN "OVAL" AROUND ARE CRITICAL CHARACTERISTIC (CC) DIMENSIONS OR (IPI) IN PROCESS INSPECTION. OHTER FEATURES OR STAND-ALONE GEOMETRICAL TOLERANCES THAT ARE DESIGNATED AS (CC) OR (IPI) HAVE THE NOTE "INSPECTION FEATURES" BELOW THEM.

8. A  SYMBOL WILL BE NEXT TO ANY DIMENSION, VIEW, OR NOTE WHICH HAS BEEN MODIFIED WITH THE CURRENT DRAWING REVISION.

spec ref -				dr	Wade Liu	09/09/05	projection 	mm 	size	A3	scale	4:1	
tolerance std	TOLERANCES UNLESS OTHERWISE SPECIFIED			eng	Wade Liu	09/09/05			ecn no				ELX-S-32119-1
ASME Y14.5M				chr	Wade Liu	09/09/05			rel level				ptc.wm.lifecycle.state
				appr	Sterling Lin	09/09/05	product family				SATA		
surface 	linear	0.X	±0.30	Amphenol FCi	title	S-ATA SIGNAL PLUG DIP VERTICAL TYPE ASSY			dwg no	10035690		rev	
		0.XX	±0.20									C	
		0.XXX	±0.10										
	ASME Y14.5	angular	0°	±2°		cat. no.	-	Product - Customer Drw				sheet 4 of 4	