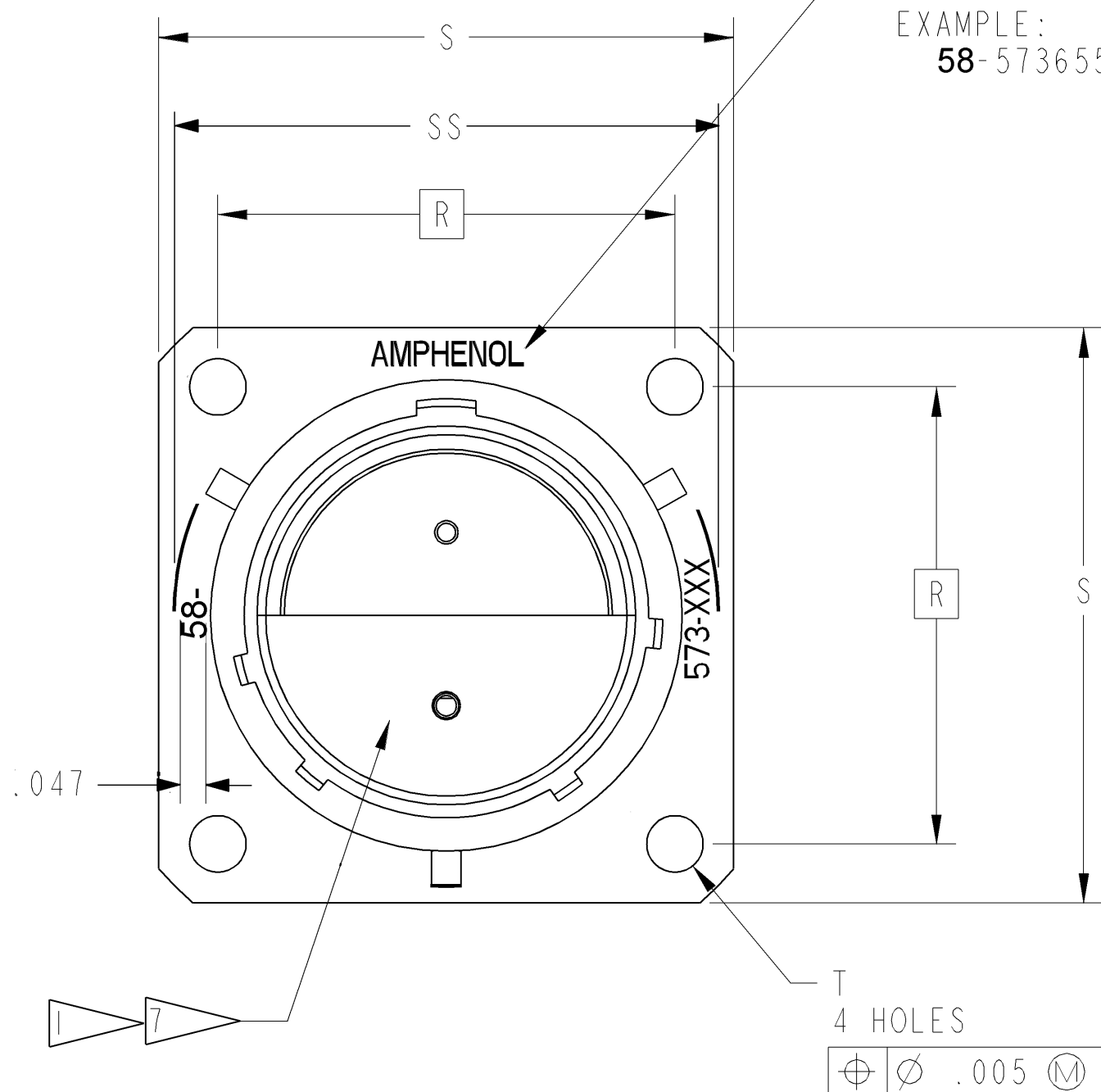
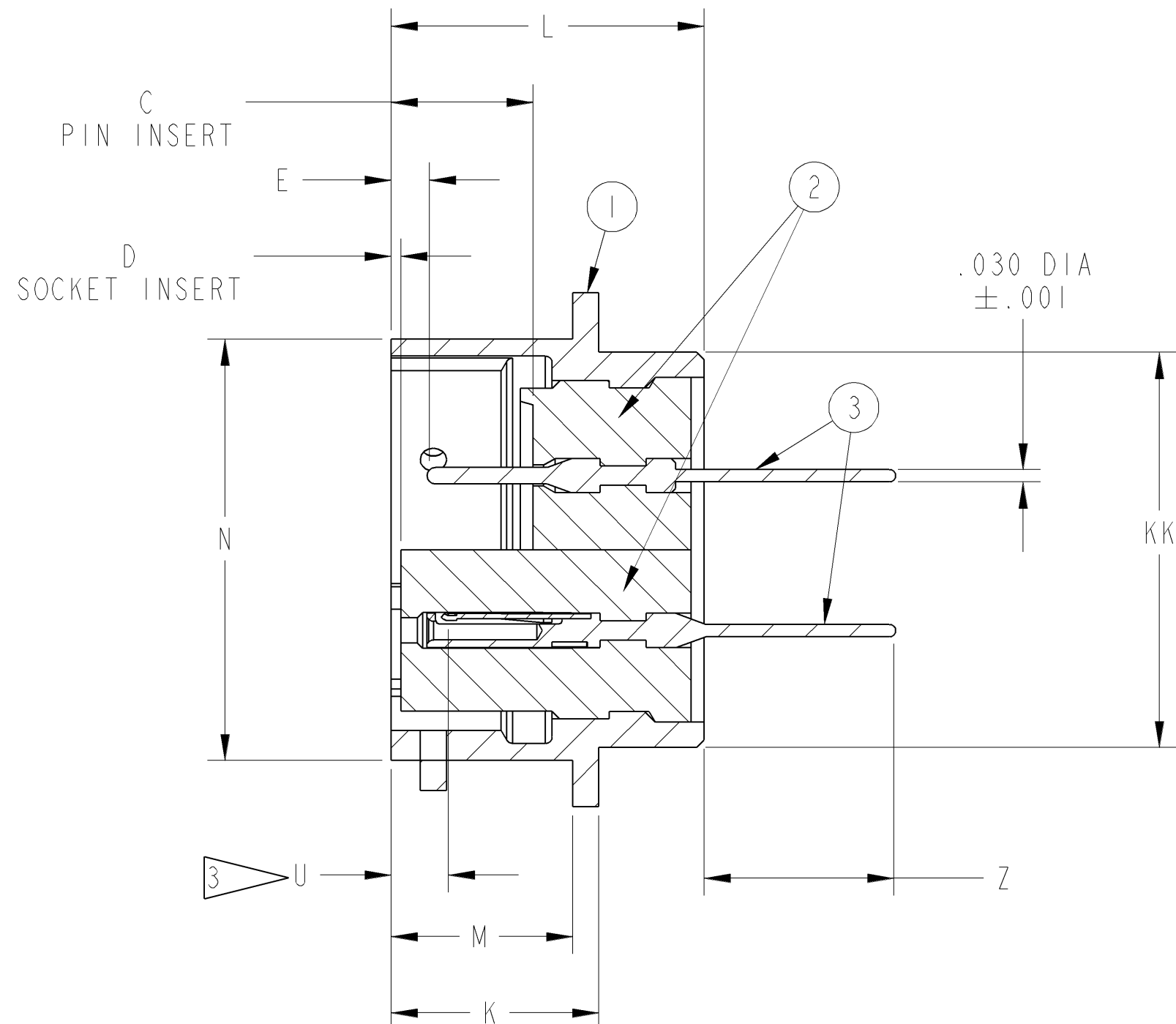


REVISIONS			
LTR	DESCRIPTION	DATE	APPVD
A	INITIAL RELEASE NUM: -----		
B	(CL II) SEE ECN: 97133	J. BIANCHI 02/12/07	
C	(CL II) REPLACED 10-497513-01D WITH 10-664164-ADD ECN: A3460	H.BROOKER 1/15/08	

WHITE INK STAMP "AMPHENOL AND  
ASSEMBLY NO., PER 9-3856-5  
EXAMPLE:  
58-573655



T  
4 HOLES  
⊕ ∅ .005 (M)



CONTACTS	
16S PIN	10-247920-161
16S SOCKET	10-247922-161
16L PIN	10-247924-161
16L SOCKET	10-247926-161
20S PIN	10-497512-ID
20S SOCKET	SEE NOTE 9
20L PIN	10-497534-ID
20L SOCKET	10-597859-A55

POS	QTY	PART NUMBER	DESCRIPTION	NOTE
3		SEE CONTACT CHART	CONTACT	9
2	1	10-1018XX-( ) OR 10-2528XX-( )	INSERT	9
1	1	10-150902-XXX	SHELL	

SEE SHEET 2.

NOTES:

THIS DOCUMENT CONTAINS PROPRIETARY INFORMATION AND SUCH INFORMATION MAY NOT BE DISCLOSED TO OTHERS FOR ANY PURPOSE OR USED FOR MANUFACTURING PURPOSES WITHOUT WRITTEN PERMISSION FROM THE AMPHENOL CORPORATION.

COMPANY ID: 9	CODED/MS/CUST: N	N/A
INTERNAL: N	LOT NO: N	
DATE CODE: N	SEE DRAW: N	N/A
STAMPING DATA		NEXT ASSEMBLY

UNLESS OTHERWISE SPECIFIED	SPECIFICATIONS	POS	QTY	PART NUMBER	DESCRIPTION	NOTE																								
LINEAR DIMENSIONS ARE IN INCHES TOLERANCES: .XXX = ±.010 .XX = ±.03 .X = ±.1 ANGLES = ±2° OTHER STANDARDS PER 9-3800 AND DOD-D-1000 THIRD ANGLE PROJECTION NOTE REF. = X	MATERIAL SPEC. N/A																													
PROCESS SPEC. SEE NOTE 10	APPROVALS PREPARED J HORVATH CHECKED MATERIAL APPROVED APPROVED																													
<table border="1"> <thead> <tr> <th colspan="4">PARTS LIST</th> </tr> <tr> <th colspan="4">AMPHENOL CORPORATION</th> </tr> <tr> <td colspan="4">BENDIX CONNECTOR OPERATIONS SIDNEY, N.Y.</td> </tr> <tr> <td colspan="4">RECEPTACLE, ELECTRICAL CONNECTOR, TYPE PT-A()FB, BLACK ZINC ALLOY PLATED</td> </tr> <tr> <td>SIZE C</td> <td>FSCM NO. 77820</td> <td>DOCUMENT NO. 58-573650/659</td> <td>REV. C</td> </tr> <tr> <td colspan="2">SCALE: NONE</td> <td>REF: 71-146206/250</td> <td>SHEET 1 OF 2</td> </tr> </thead></table>							PARTS LIST				AMPHENOL CORPORATION				BENDIX CONNECTOR OPERATIONS SIDNEY, N.Y.				RECEPTACLE, ELECTRICAL CONNECTOR, TYPE PT-A()FB, BLACK ZINC ALLOY PLATED				SIZE C	FSCM NO. 77820	DOCUMENT NO. 58-573650/659	REV. C	SCALE: NONE		REF: 71-146206/250	SHEET 1 OF 2
PARTS LIST																														
AMPHENOL CORPORATION																														
BENDIX CONNECTOR OPERATIONS SIDNEY, N.Y.																														
RECEPTACLE, ELECTRICAL CONNECTOR, TYPE PT-A()FB, BLACK ZINC ALLOY PLATED																														
SIZE C	FSCM NO. 77820	DOCUMENT NO. 58-573650/659	REV. C																											
SCALE: NONE		REF: 71-146206/250	SHEET 1 OF 2																											

FAMCODES DATA3: \*\*\* CICS: \*\*\*

DOC NO 58-573650/659 SH 1 OF 2

A

ASSEMBLY NUMBER	PT. NO.	C	D	E	K	L	M	N	R	S	T	U	Z	SS	KK
	REF							DIA			DIA	MAX		DIA	DIA
		+ .010	+ .010	+ .010	+ .021	± .031	+ .010	+ .001		+ .011	± .005		+ .040	+ .000	+ .011
		- .025	- .025	- .020	- .010		- .000	- .005		- .010			- .050	- .016	- .000
<b>58-573650</b> -()	02A - 6-()	.337	.025	.085	.493	.743	.431	.348	.469	.688	.120	.153	.380	.439	.312
<b>58-573651</b> -()	- 8-()							.473	.594	.812				.563	.438
<b>58-573652</b> -()	- 10-()							<b>.590</b>	.719	.938				.680	.562
<b>58-573653</b> -()	- 12-()							.750	.812	1.031				.859	.688
<b>58-573654</b> -()	- 14-()							.875	.906	1.125				.984	.812
<b>58-573655</b> -()	- 16-()							1.000	.969	1.219				1.108	.938
<b>58-573656</b> -()	- 18-()							<b>1.125</b>	1.062	1.312				1.233	1.062
<b>58-573657</b> -()	- 20-()	.399	.087	.147	.650	.994	.556	<b>1.250</b>	1.156	1.438		.215	.286	1.358	1.188
<b>58-573658</b> -()	- 22-()				.650	.994	.556	<b>1.375</b>	1.250	1.562			.286	1.483	1.312
<b>58-573659</b> -()	- 24-()				.683	1.027	.589	1.500	1.375	1.688	.147		.253	1.610	1.438

5

10. PROCESS SPEC:  
 TEST 9-3353-8  
 ASSY 9-3443-6

-----  
**9-3856-5**, 9-2437-1

- 9. SEE SEPARATE PARTS LIST FOR COMPONENT PART NUMBERS AND QUANTITIES.
- 8. SEE WORK ORDER FOR PERMISSIBLE ADDITIONAL OR ALTERNATE STAMPING.
- 7. FOR CONTACT ARRANGEMENTS, SEE L-15206/50.
- 6. UNITS ILLUSTRATED MEET THE APPLICABLE REQUIREMENTS OF MIL-C-26482.
- 5. FOR COMPLETE ASSEMBLY NO. & PT NO. REF. ADD APPLICABLE INSERT ARRANGEMENT SUFFIX TO BASE NUMBERS LISTED ABOVE PER 9-2437-1.
- 4. STAMPING MAY BE ON EITHER SIDE OF FLANGE (ONE SIDE ONLY).
- 3. DISTANCE BETWEEN END OF SHELL & THE POINT AT WHICH A GAGE PIN, HAVING THE SAME BASIC DIAMETER AS THE MATING CONTACT & A SQUARE FACE, ENGAGES SOCKET CONTACT SPRING.
- 2. SEE DRAWING **58-146606/50** FOR REQUIRED MATING PLUG ASSEMBLIES.
- 1. INSERTS & CONTACTS MUST NOT BE REMOVED.

**NOTES:**

THIS DOCUMENT CONTAINS PROPRIETARY INFORMATION AND SUCH INFORMATION MAY NOT BE DISCLOSED TO OTHERS FOR ANY PURPOSE OR USED FOR MANUFACTURING PURPOSES WITHOUT WRITTEN PERMISSION FROM THE AMPHENOL CORPORATION.

SIZE <b>C</b>	FSCM NO. <b>77820</b>	DOCUMENT NO. <b>58-573650/659</b>	REV. <b>C</b>
SCALE: 3.0		REF: 58-570120/129	SHEET 2 OF 2