

Tous droits strictement reserves. Reproduction ou communication a des tiers interdite sous quelque forme que ce soit sans autorisation ecrite du proprietaire. Propriete de c FCI. Droits de reproduction FCI.

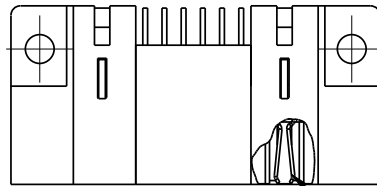
FCI

All rights strictly reserved. Reproduction or issue to third parties in any form whatever is not permitted without written authority from the proprietor. Property of FCI. Copyright FCI.

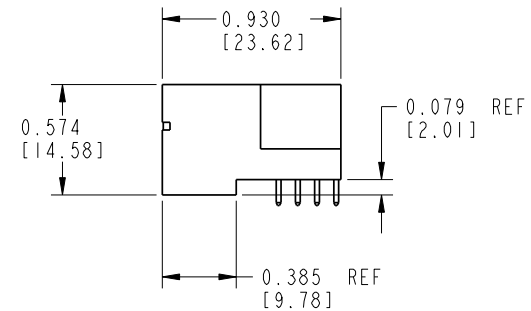
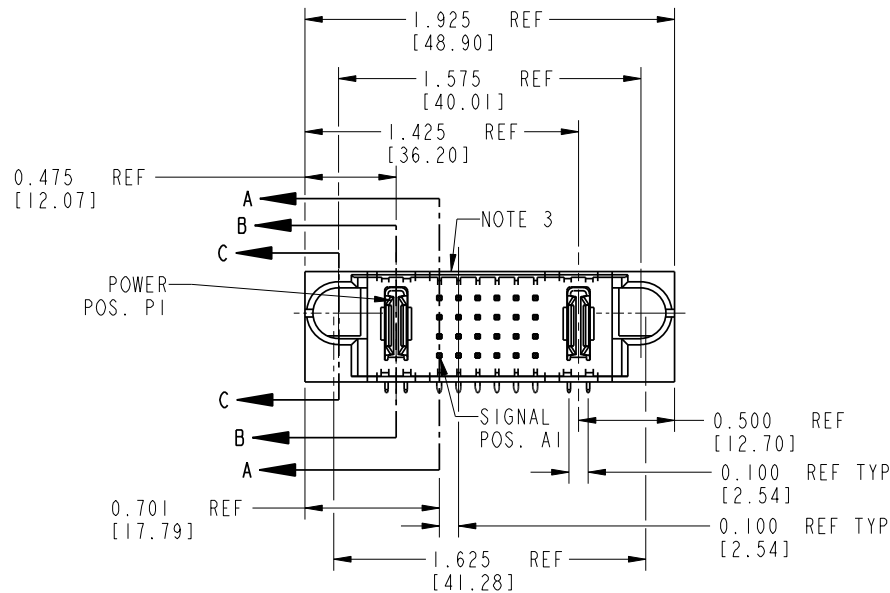
A

B

PRODUCT No.	ROWS	POWER		SIGNAL						POWER		
		E1	P1	1	2	3	4	5	6	P2	E2	
51882-001-- NOTE: ②	D C B A		PA	UUUUUU	TTTTTT	SSSSSS	RRRRRR			PA		

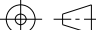



NOTE 10
TYP



CONFIDENTIAL

CODE	DIM "M" ±0.010 [0.25]	CONTACT TYPE
F	0.220 [5.59]	SIGNAL
R	0.270 [6.86]	SIGNAL
S	0.270 [6.86]	SIGNAL
T	0.270 [6.86]	SIGNAL
U	0.270 [6.86]	SIGNAL
PA	N/A [N/A]	POWER

mat'l code			SEE NOTES		tolerances unless otherwise specified			CUSTOMER COPY		<div><div>A</div><div>FCI</div><div>www.fciconnect.com</div></div>			
lir	ecn no.	dr	date	linear	$.XX \pm .01 / 0.X \pm 0.3$			projection 		title IP + 24S + IP RIGHT ANGLE SOLDER HEADER			
A	V10871	JWS	02-08-01		$.XXX \pm .005 / 0.XX \pm 0.13$								
B	V11848	LSS	07/10/01		$.XXXX \pm .0020 / 0.XXX \pm 0.051$								
C	V12290	JWS	10/05/01	angles	$0^\circ \pm 2^\circ$			MM	scale 1 : 1	product family		PwrBlade	code
D	V03-0571	TAB	05/28/03	dr	J. SHAFFER	02-08-01	A			51882	sheet 1 of 4		
E	DG05-0212	SJ	07/07/05	enrg	J. DODDS	02-08-01							
F	DG06-0005	JMG	01/05/06	chr	J. DODDS	02-08-01							
				appd	J. DODDS	02-08-01							
sheet index		revision sheet		F	F	F	F						
				1	2	3	4						

A

B

Pro/E

PDM: Rev:F

STATUS: Released

Printed: Dec 20, 2010

Tous droits strictement reserves. Reproduction ou communication a des tiers interdite sous quelque forme que ce soit sans autorisation ecrite du proprietaire. Propriete de c FCI. Droits de reproduction FCI.

FCI

All rights strictly reserved. Reproduction or issue to third parties in any form whatever is not permitted without written authority from the proprietor. Property of FCI. Copyright FCI.

A

B

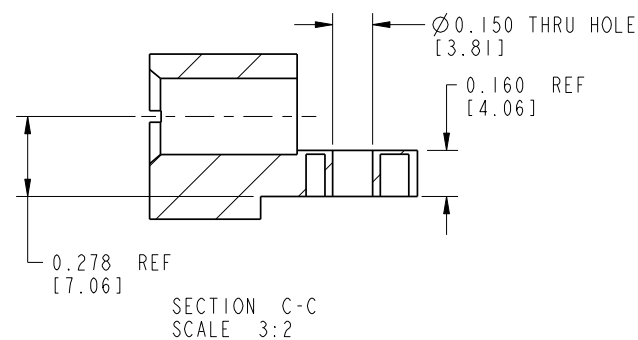
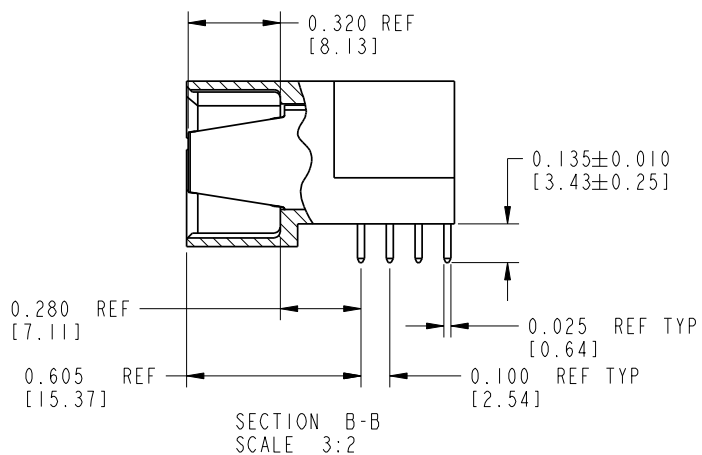
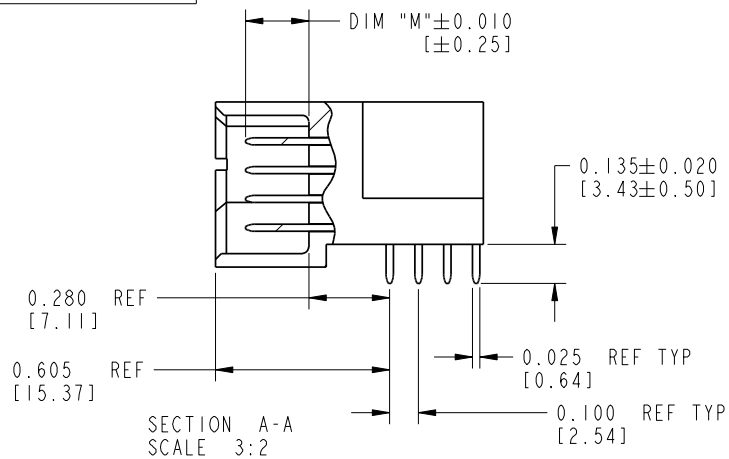
A

B

PRODUCT NUMBER

51882-001--

NOTE: (2)



CONFIDENTIAL

mat'l code				SEE NOTES				tolerances unless otherwise specified				CUSTOMER COPY				<div><div>A</div><div>FCI</div><div>www.fciconnect.com</div></div>			
lir	ecn no.	dr	date	linear	$.XX \pm .01 / 0.X \pm 0.3$				projection		title								
F					$.XXX \pm .005 / 0.XX \pm 0.13$						IP + 24S + IP								
					$.XXX \pm .0020 / 0.XXX \pm 0.051$						RIGHT ANGLE SOLDER HEADER								
				angles	$0^\circ \pm 2^\circ$					scale	product family		PwrBlade		code				
				dr	J. SHAFFER	02-08-01		MM			size		dwg no		213				
				enrg	J. DODDS	02-08-01		1:1			A		51882		sheet				
				chr	J. DODDS	02-08-01								2 of 4					
				appd	J. DODDS	02-08-01													
sheet index		revision sheet																	

1 | 2

Pro/E

PDM: Rev:F

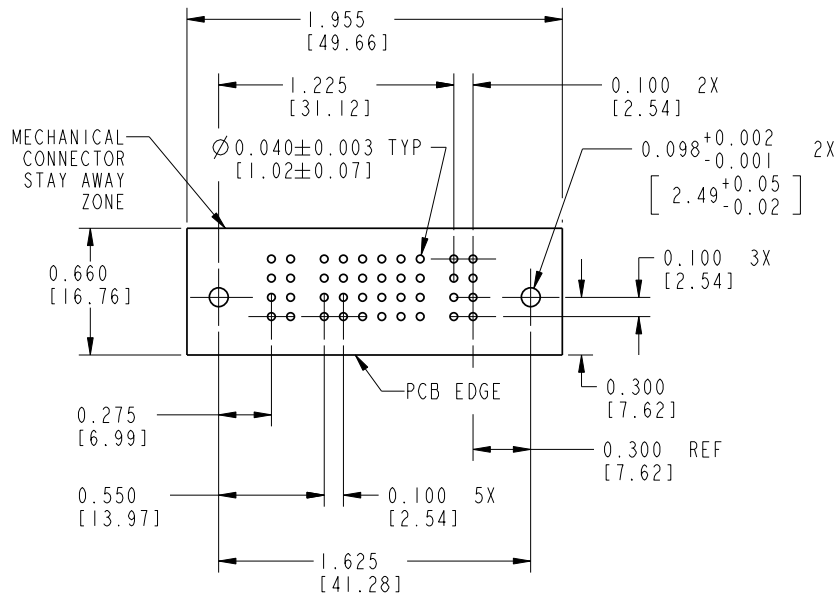
STAT: Released

Printed: Dec 20, 2010

FCI

PRODUCT NUMBER

51882-001--
NOTE: (2)



RECOMMENDED PCB LAYOUT

CONFIDENTIAL

mat'l code				SEE NOTES		tolerances unless otherwise specified		CUSTOMER		FCI		www.fciconnect.com	
lir	ecn no.	dr	date	linear	angles	.XX±.01/0.X±0.3		COPY		projection		title	
F						.XXX±.005/0.XX±0.13		MM		IP + 24S + IP		RIGHT ANGLE SOLDER HEADER	
						.XXXX±.0020/0.XXX±0.051		scale		product family		PwrBlade	
				dr		J. SHAFFER	02-08-01	1:1		size		dwg no	
				enrg		J. DODDS	02-08-01			A		51882	
				chr		J. DODDS	02-08-01						
				appd		J. DODDS	02-08-01						
sheet index	revision sheet												

code code 22526

FCI

A

B

1 | 2

3 |

4

A

B

PRODUCT NUMBER

51882-001--
NOTE: ②

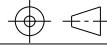
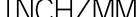
CONNECTOR NOTES:

- HOUSING MATERIAL: UL 94 V-0 GLASS FILLED HIGH TEMP THERMOPLASTIC
POWER CONTACT MATERIAL: COPPER ALLOY
SIGNAL CONTACT MATERIAL: COPPER ALLOY
- 51882-001;51882-001LF;51882-001GLF PLATING SPEC. SEE PRINT:10064183
- "MANUFACTURER" NAME, P/N, AND DATE CODE TO APPEAR ON THIS SURFACE
- PRODUCT SPECIFICATION GS-12-149

PCB NOTES:

- ALL DIMENSIONS ARE BASIC UNLESS OTHERWISE SPECIFIED.
- ALL THROUGH HOLES ARE LOCATED WITH A TRUE POSITION OF 0.004 [0.10]
- ALL HOLE DIAMETERS ARE FINISHED HOLE SIZE
- $\varnothing 0.158[4.01]$ THROUGH HOLES ARE UNPLATED.
- $\varnothing 0.0453\pm 0.0010$ [1.151 ± 0.025] DRILLED HOLES PLATED WITH 0.0003 [0.008] MIN SnPb OVER 0.001 [0.03] TO 0.003 [0.08] Cu PLATING TO ACHIEVE A $\varnothing 0.040\pm 0.003$ [1.02 ± 0.07] HOLE.
- CONNECTOR CONTAINS REVISED POWER CONTACTS.

CONFIDENTIAL

mat'l code				SEE NOTES				tolerances unless otherwise specified				CUSTOMER				<div><div>A</div><div>FCI</div><div>www.fciconnect.com</div></div>				
lfr	ecn no.	dr	date	linear	.XX±.01/0.X±0.3				COPY				projection 				title IP + 24S + IP RIGHT ANGLE SOLDER HEADER			
F					.XXX±.005/0.XX±0.13															
					.XXXX±.0020/0.XXX±0.051															
				angles	0°±2°				INCH/MM 				product family PwrBlade				code			
				dr	J. SHAFFER	02-08-01			scale 1:1				size		dwg no		213		sheet 4	
				enrg	J. DODDS	02-08-01							A		51882					
				chr	J. DODDS	02-08-01														
				appd	J. DODDS	02-08-01														
sheet index		revision sheet																		

1 | 2

Pro/E

PDM: Rev:F

STATUS: Released

Printed: Dec 20, 2010

Mouser Electronics

Authorized Distributor

Click to View Pricing, Inventory, Delivery & Lifecycle Information:

[FCI / Amphenol:](#)

[51882-001LF](#)