

4

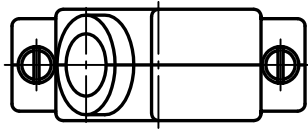
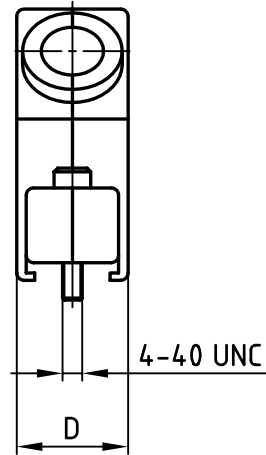
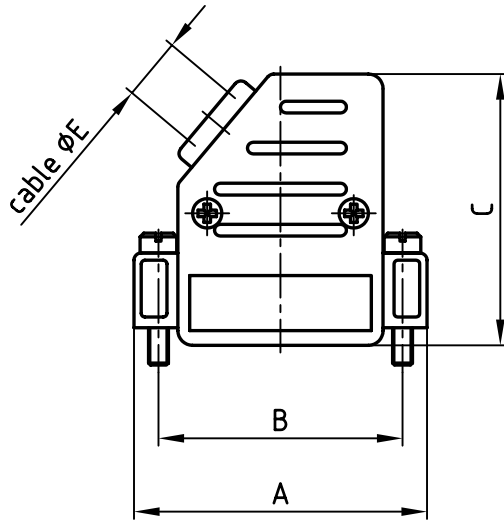
3

2

1

used for:

D-SUB



Directive 2002/95/EC
"RoHS"
Compliant

No. of pos.	A	B	C	D	ØE	Part No.
9	31.5	25.0	37.0	15.2	8.5	600X56009X
15	40.0	33.3	37.0	15.2	8.5	600X56015X
25	53.5	47.0	41.0	15.2	11.0	600X56025X
37	70.0	63.5	41.0	15.2	11.0	600X56037X
50	67.8	61.1	41.0	18.2	12.0	600X56050X

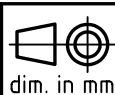
NOTES:

- HOOD: ABS UL 94 V-0; METALLIZED
- SCREWS: BRASS; NICKEL PLATED

THIS DRAWING MAY NOT BE COPIED OR
REPRODUCED IN ANY WAY, AND MAY NOT
BE PASSED ON TO A THIRD PARTY WITHOUT
WRITTEN PERMISSION.
OWNERSHIP AND COPYRIGHT OF CONEC GmbH
DO NOT ALTER CAD DRAWING BY HAND

rev.	description	date	name

tolerance



scale:

1:1

material:

SEE NOTES

title:

PLASTIC HOOD

9-50pos. WITH SIDE CABLE EXIT
with short screws

dwg no:

AutoCAD 2004

DIN-A

16K1A1291

4

sh: 1/1

part no:

SEE TABLE

CONEC[®]

Mouser Electronics

Authorized Distributor

Click to View Pricing, Inventory, Delivery & Lifecycle Information:

[CONEC:](#)

[600X56025X](#)