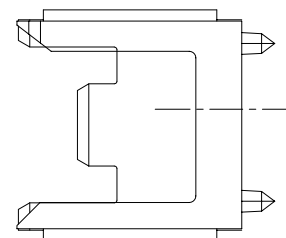
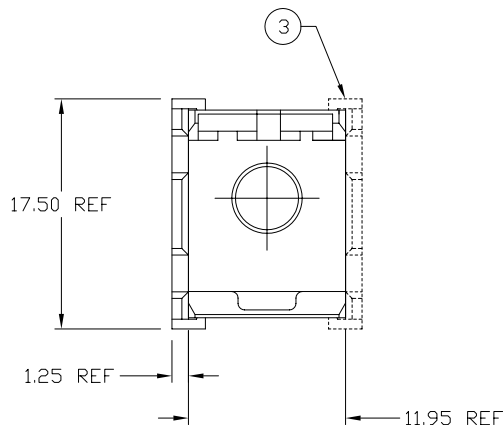


PRODUCT NUMBER	STATUS	APPLICATION	NOTES
73996-001	OBSOLETE	5 ROW HEADER	7,8
73996-002	ACTIVE (SEE SHT 1)	4 ROW SHROUD	
73996-011	ACTIVE (SEE SHT 2)	5 ROW HEADER	
73996-012	ACTIVE (SEE SHT 3)	5 ROW THICK CARD HEADER	
73996-013	ACTIVE (SEE SHT 4)	5 ROW HEADER (CUSTOMER SPECIAL)	

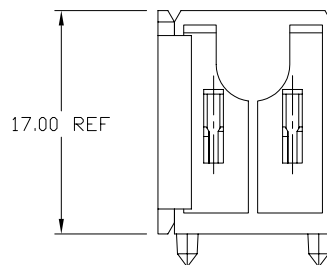
6 -002 CAN BE APPLIED TO:	
HYBRID HEADER HOUSING P/N	SHROUD P/N
88911	70203
88913	89028



73996-002

#### NOTES

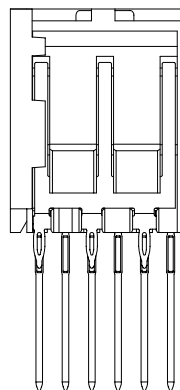
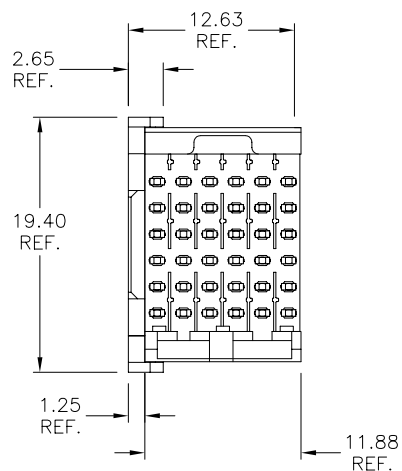
- 1-MATERIAL-NYLON 30% GLASS-FILLED  
FLAME RETARDANT ACC. UL 94-VO  
COLOR-NATURAL
- 2-SHOWN WITH, A METRAL 4-ROW,  
88911-101, 12MM HYBRID HEADER HOUSING, WHICH  
MUST BE ORDERED SEPARATELY.
- 3-END WALL CAN BE USED ON EITHER SIDE OF HEADER
- 4-ENDWALL CAN ALSO BE USED WITH STANDARD  
METRAL 4-ROW SHROUDS
- 5-REFERENCE PRODUCT SPEC GS-12-199.
- 6-THIS TABLE IS NOT A COMPLETE LISTING BUT  
REPRESENTS APPLICABLE PRODUCT OFFERINGS.  
FOR OTHER PRODUCT OFFERINGS, CONTACT YOUR  
LOCAL FCI OFFICE.
- 7-ADD "LF" SUFFIX AT THE END OF PART NUMBER  
FOR LEAD FREE OPTION.
- 8-THIS PRODUCT MEETS EUROPEAN UNION DIRECTIVES AND OTHER  
COUNTRY REGULATION AS DESCRIBED IN GS-22-008.
- 9-THE HOUSING WILL WITHSTAND EXPOSURE TO 260°C PEAK TEMPERATURE  
FOR 15 SECONDS IN A WAVE SOLDER APPLICATION WITH A 1.5mm  
MINIMUM THICK CIRCUIT BOARD. SEE APPLICATION NOTES/PROCEDURES  
IF THEY ARE AVAILABLE.



mat'l. code				surface	tolerance	projection	product family
				ISO 1302	ISO 406 ISO 1101		METRAL ACC.
ltr	ecn no	dr	date	tolerances unless otherwise specified		 MM scale 1:1	title
A	V80952	GCR	6/3/98	angles	linear		HEADER/SHROUD END WALL
B	V02723	JRV	11/2/00				
C	V02783	JWS	11/29/00				
D	V11167	RPM	4/9/01	dr	C.DAILY	12/18/01	dwg no <b>73996</b> type Product Customer Drawing
E	V12829	CGD	12/18/01	enr	B.MATTHEWS	12/18/01	
F	M06-0353	MHT	9/06/06	chr	B.MATTHEWS	12/18/01	
sheet index				revision	F	F	
				sheet	1	2	3

form: A3

PRODUCT NUMBER	APPLICATION
73996-011	5 ROW HEADER & SHROUD



#### NOTES

1-MATERIAL-NYLON 30% GLASS-FILLED  
FLAME RETARDANT ACC. UL 94-V0  
COLOR-NATURAL

2-SHOWN WITH, A METRAL 1000 5-ROW, 12MM HEADER,  
WHICH MUST BE ORDERED SEPARATELY

3-END WALL CAN BE USED ON EITHER SIDE OF HEADER

4-ENDWALL CAN ALSO BE USED WITH STANDARD METRAL  
5-ROW HEADERS & SHROUDS

5-REFERENCE PRODUCT SPEC GS-12-199.

6-THIS TABLE IS NOT A COMPLETE LISTING BUT  
REPRESENTS APPLICABLE PRODUCT OFFERINGS.  
FOR OTHER PRODUCT OFFERINGS, CONTACT YOUR  
LOCAL FCJ OFFICE.

6 -011 CAN BE APPLIED TO:

HEADER P/N	SHROUD P/N
55406	52000
73983	73475
74977	73993
84817	74773
85834	84621
85854	84818
89006	89055
89007	98161
89008	-
89009	-
89099	-

73996-011

mat'l. code				surface ISO 1302	tolerance ISO 406 ISO 1101	projection MM	product family METRAL ACC.
ltr	ecn	no	dr	date	tolerances unless otherwise specified	scale 1:1	title HEADER/SHROUD END WALL
F					angles linear		
					dr	C.DAILY	12/18/01
					enr	B.MATTHEWS	12/18/01
					chr	B.MATTHEWS	12/18/01
					appd	B.MATTHEWS	12/18/01
sheet index	revision sheet						dwg no 73996
							sheet 2 of 3
							size A3
							type Product Customer Drawing

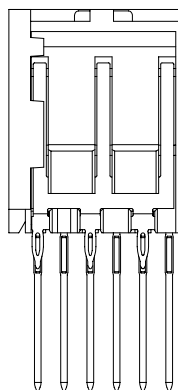
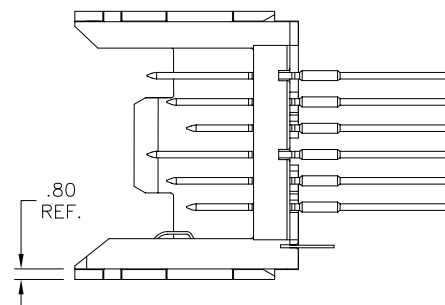
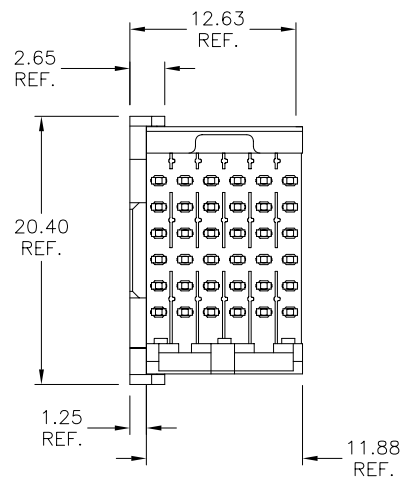
PDM: Rev:F

STATUS:Released

Printed: Aug 01, 2010

PRODUCT NUMBER	APPLICATION
73996-012	5 ROW THICK CARD HEADER

⑥ -012 CAN BE APPLIED TO:	
HEADER P/N	SHROUD P/N
84881	84882
84809	84811



## NOTES

1-MATERIAL-NYLON 30% GLASS-FILLED  
FLAME RETARDANT ACC. UL 94-VO  
COLOR-NATURAL

2-SHOWN WITH, A METRAL 1000 5-ROW, 12MM HEADER,  
WHICH MUST BE ORDERED SEPARATELY

3-END WALL CAN BE USED ON EITHER SIDE OF HEADER  
4-ENDWALL CAN ALSO BE USED WITH STANDARD METRAL  
5-ROW THICK CARD HEADERS & SHROUDS

5-REFERENCE PRODUCT SPEC GS-12-199.

6- THIS TABLE IS NOT A COMPLETE LISTING BUT REPRESENTS APPLICABLE PRODUCT OFFERINGS. FOR OTHER PRODUCT OFFERINGS, CONTACT YOUR LOCAL FCI OFFICE.

[illegible]

# Mouser Electronics

Authorized Distributor

Click to View Pricing, Inventory, Delivery & Lifecycle Information:

[FCI / Amphenol:](#)

[73996-011LF](#) [73996-003LF](#)