

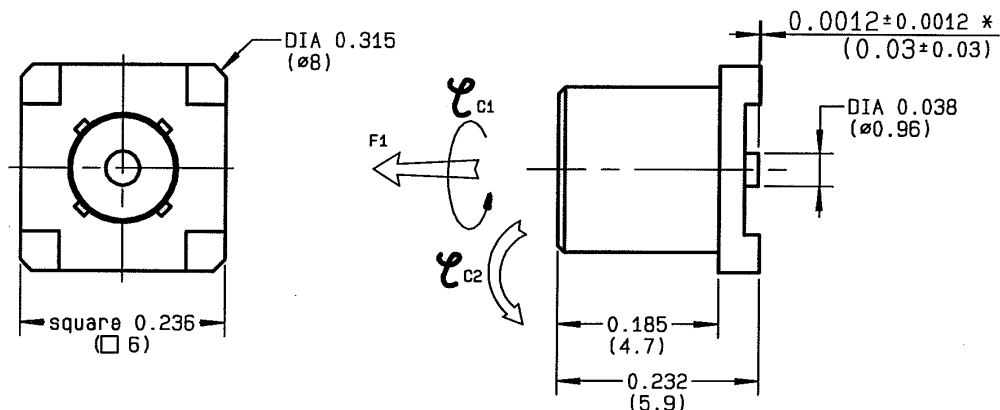
STRAIGHT FEMALE RECEPTACLE FOR PCB

SMT TYPE

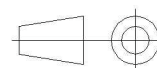
R113.424.000

Series : MCX

*set back of c. contact from body
(Retrait du c. central/ au corps)



All dimensions are in mm.



COMPONENTS	MATERIALS	PLATINGS (μm)
BODY	BRASS	GOLD 0.2 OVER NICKEL 2
CENTER CONTACT	BERYLLIUM COPPER	GOLD 0.5 OVER NICKEL 2
OUTER CONTACT	-	-
INSULATOR	PTFE	-
GASKET	-	-
OTHERS PARTS	-	-
-	-	-
-	-	-

Issue : 0422 D

In the effort to improve our products, we reserve the right to make changes judged to be necessary.



STRAIGHT FEMALE RECEPTACLE FOR PCB**R113.424.000****SMT TYPE**Series : **MCX****PACKAGING**

Standard	Unit	Other
100	'W' option	Contact us

SPECIFICATION**ELECTRICAL CHARACTERISTICS**

Impedance	50	Ω
Frequency	0-6	GHz
VSWR	1.05 + 0.050	x F(GHz) Maxi
Insertion loss	0.03	$\sqrt{F}(\text{GHz})$ dB Maxi
RF leakage	- (NA)	- F(GHz)) dB Maxi
Voltage rating	335	Veff Maxi
Dielectric withstanding voltage	1000	Veff mini
Insulation resistance	1000	M Ω mini

ENVIRONMENTAL

Operating temperature	-55/+155	$^{\circ}\text{C}$
Hermetic seal	NA	Atm.cm3/s
Panel leakage	NA	

OTHERS CHARACTERISTICS

Assembly instruction

Others :
FORCE F1:90N-TORQUES C1:45Ncm-C2:80Ncm

MECHANICAL CHARACTERISTICS

Center contact retention	
Axial force – Mating end	10 N mini
Axial force – Opposite end	10 N mini
Torque	NA N.cm mini
Recommended torque	
Mating	NA N.cm
Panel nut	NA N.cm
Mating life	500 Cycles mini
Weight	0.620 g

Issue : 0422 D

In the effort to improve our products, we reserve the right to make changes judged to be necessary.

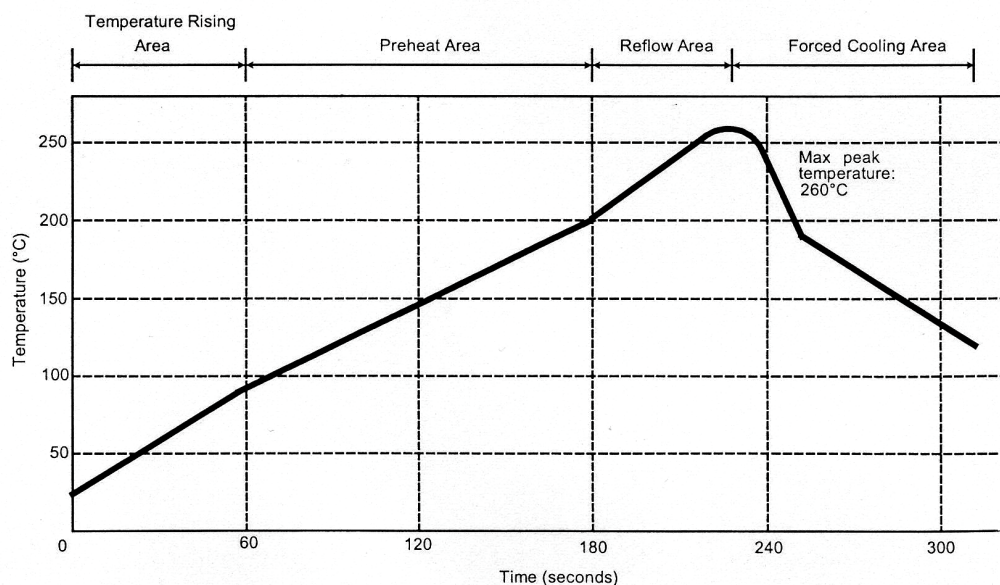


STRAIGHT FEMALE RECEPTACLE FOR PCB**R113.424.000****SMT TYPE**

Series : MCX

SOLDER PROCEDURE

1. Deposit solder paste 'Sn Ag4 Cu0.5' on mounting zone by screen printing application.
We recommend a low residue flux. We advise a thickness of 150 microns mini. (.006 inch mini).
Verify that the edges of the zone are clean.
2. Placement of the receptacle on the mounting zone with an automatic machine of 'pick and place' type.
Aspiration port (see page 4) centered into body and push against it.
A video camera is recommended for positioning of the component .
Adhesive agents must not be used on the receptacle.
3. Soldering by infra-red reflow.
Below please find ,the typical profile to use.
4. Cleaning of printed circuit boards.
5. Verification of solder joints and position of the component by visual inspection.

TEMPERATURE PROFILE

Parameter	Value	Unit
Temperature rising Area	1 - 4	°C/sec
Max Peak Temperature	260	°C
Max dwell time @260°C	10	sec
Min dwell time @235°C	20	sec
Max dwell time @235°C	60	sec
Temperature drop in cooling Area	-1 to - 4	°C/sec
Max dwell time above 100°C	420	sec

Issue : 0422 D

In the effort to improve our products, we reserve the right to make changes judged to be necessary.

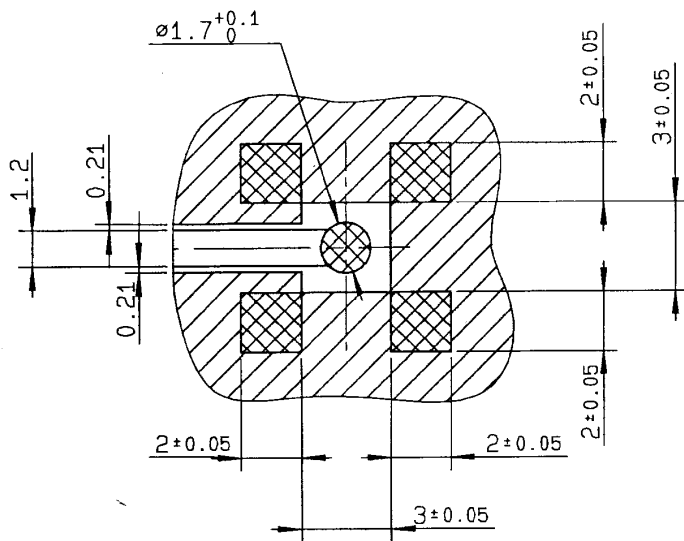


STRAIGHT FEMALE RECEPTACLE FOR PCB

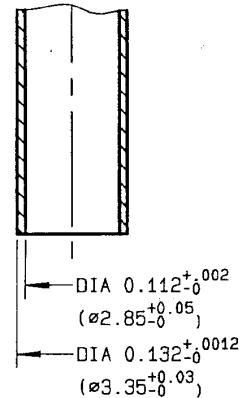
SMT TYPE

R113.424.000

Series : MCX



ASPIRATION PORT



COPLANAR LINE

Pattern and signal are on the same side

Thickness of PCB : .063 (1.6 mm)

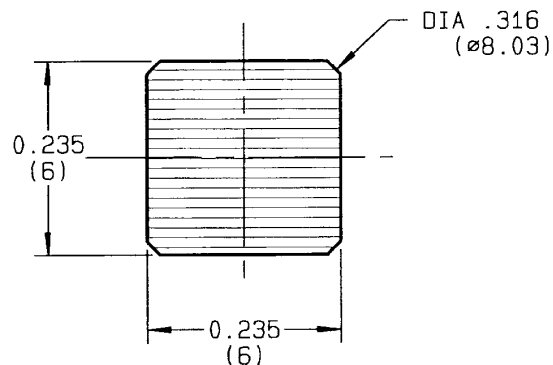
 The material of PCB is the epoxy resin
of glass fabrics bacs. (Er = 4.8)

 The solder resist should be printed
except for the land pattern on the PCB.


Pattern



Land for solder paste

 SHADOW OF MCX RECEPTACLE
FOR VIDEO CAMERA


Issue : 0422 D

In the effort to improve our products, we reserve the right to make changes judged to be necessary.


RADIALL®

Mouser Electronics

Authorized Distributor

Click to View Pricing, Inventory, Delivery & Lifecycle Information:

Radial:

[R113424000](#)