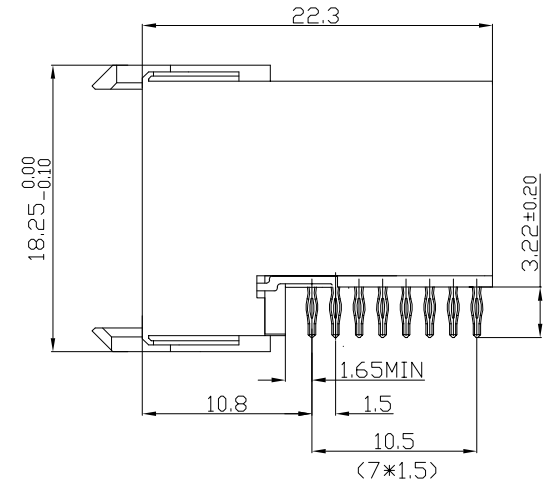
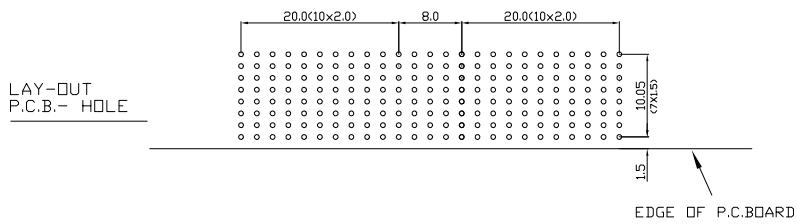
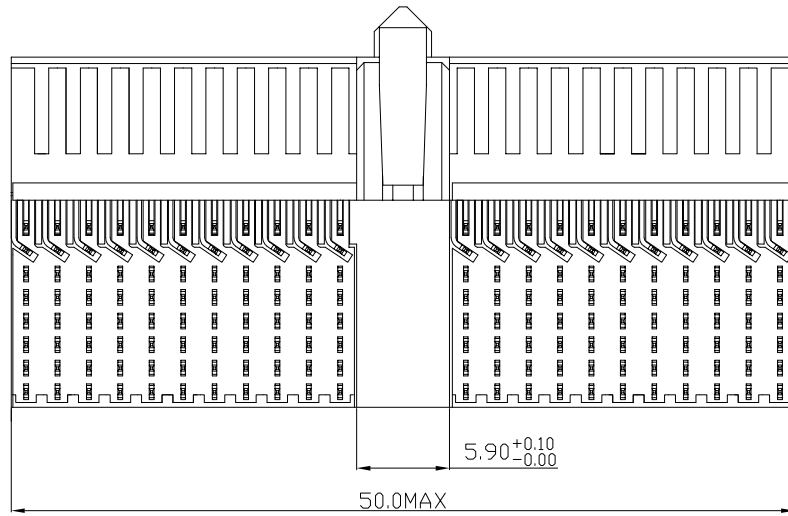
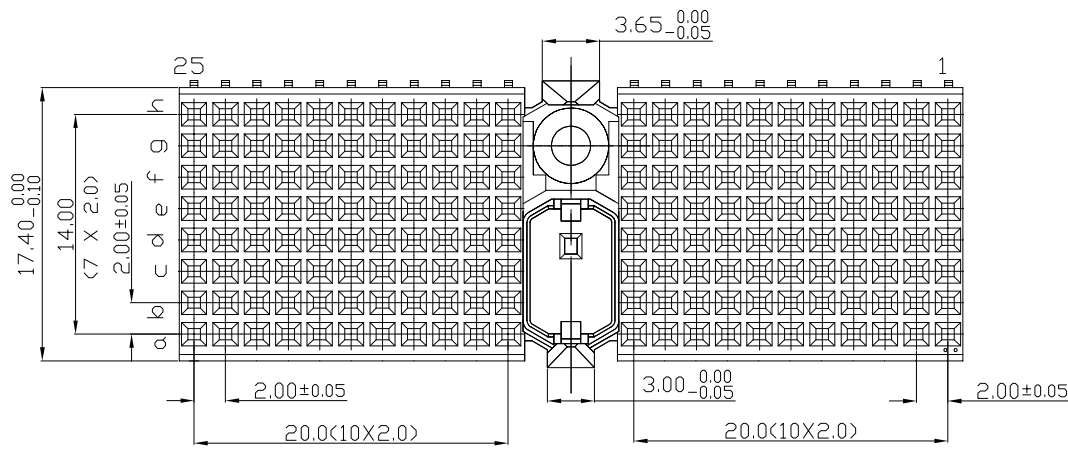


Tous droits strictement reserves. Reproduction ou communication a des tiers interdite sous quelque forme que ce soit sans autorisation ecrite du proprietaire. Propriete de c FCI. Droits de reproduction FCI.



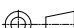



All rights strictly reserved. Reproduction or issue to third parties in any form whatever is not permitted without written authority from the proprietor. Property of FCI. Copyright FCI.



PERFORMANCE CHARACTERISTICS
CURRENT RATING 1.5A AT 20°C (FULLY LOADED)
1 A AT 70°C (FULLY LOADED)
RATED VOLTAGE : 500 V AC (CONT /CONT)
OPERATING TEMPERATURE : -55°C TO 125°C
CONTACT RESISTANCE 20 mΩ MAX
INSERTION FORCE : 0.75N MAX/CONT
EXTRACTION FORCE : 0.15N MIN/CONT
INSULATION RESISTANCE : 10⁴ MΩ MIN

- NOTES
1. HM2R81PA8100 is LEAD FREE INDICATOR : LF=LEAD FREE CODE (15A16)
PLATING CODE CODE (13A14)
- | Plating code | Plating | Performance Level |
|--------------|-----------|-------------------------------------------------------|
| AA | 0.75um Au | EC performance level 2125 (mating cycle) TELCORDIA CO |
| AB | 1.25um Au | TELCORDIA UE |
2. THIS PRODUCT IS CSA APPROVED.
THIS PRODUCT IS UL RECOGNIZED.
3. FOR RECOMMENDED PTH DIMENSIONS REFER DRAWING :
BSA201572.001
4. THIS PRODUCT (LF) MEETS EUROPEAN UNION DIRECTIVES AND
OTHER COUNTRY REGULATIONS AS DESCRIBED IN GS-22-008

		www.fciconnect.com			tolerance 1DEC ±0.2 1DEC 2DEC ±0.1 2DEC ANGLES ±1° HOEKEN	projection 		
Dr	Nickor Zuo	Jul-20-09	Product family	MILLIPICS		size	A4	Scale
Eng	Nickor Zuo	Jul-20-09	Spec ref					SCALE
Chr	PeiMing Zheng	Jul-20-09	Material			ECN		
Appr	Joseph Hsia	Jul-20-09						
title	MPACS 8+2R RA RCP CONN TYPE D/W.O PEGS				dwg no	BSC201418060		Rev.
								B
catalog no			HM2R81PA8100----			CUSTOMER		sheet 1 of 1

Mouser Electronics

Authorized Distributor

Click to View Pricing, Inventory, Delivery & Lifecycle Information:

[FCI / Amphenol:](#)

[HM2R81PA8100N9LF](#) [HM2R81PA8100AALF](#) [HM2R81PA8100N9JLF](#)