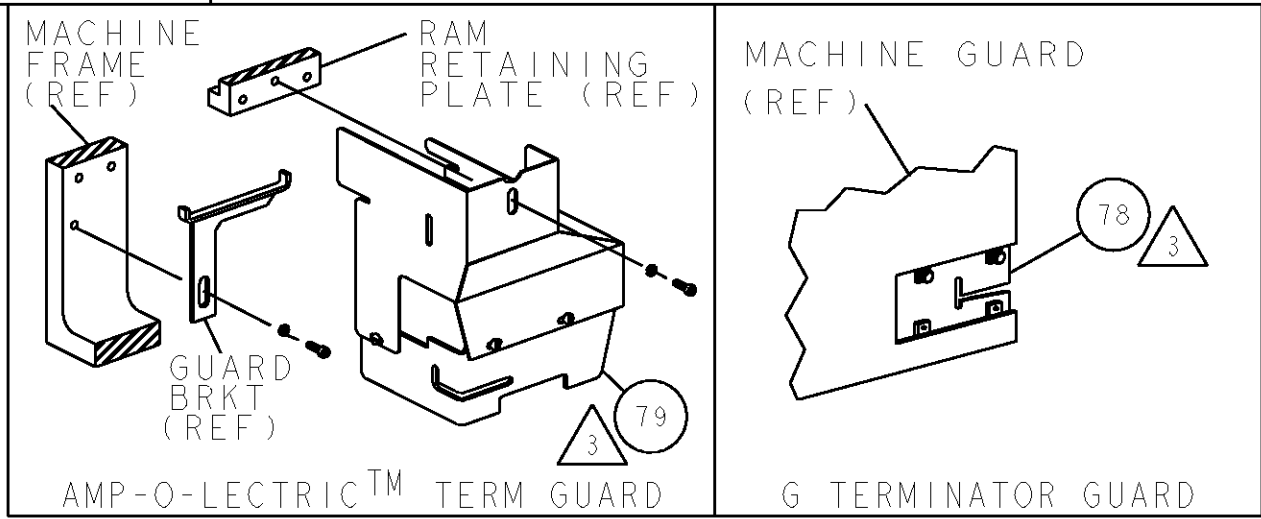


THIS DRAWING IS UNPUBLISHED.		RELEASED FOR PUBLICATION	
COPYRIGHT 20		BY TYCO ELECTRONICS CORPORATION. ALL RIGHTS RESERVED.	
PART NUMBER	REV	FIRST USED	POWER UNIT
1855396-1	D	122500-1	LEADMAKER & BENCH MODEL G
1855396-2	D	565435-5	BENCH MODEL K
7-1855396-7	D	-	SPARE PARTS
		FEED TYPE	
		POST FEED	
		POST FEED	
		-	

- 1 RECOMMENDED SPARE PARTS
- 2 GREASE LIGHTLY
- 3 GUARD MUST BE IN PLACE WHEN OPERATING APPLICATOR IN A BENCH MACHINE

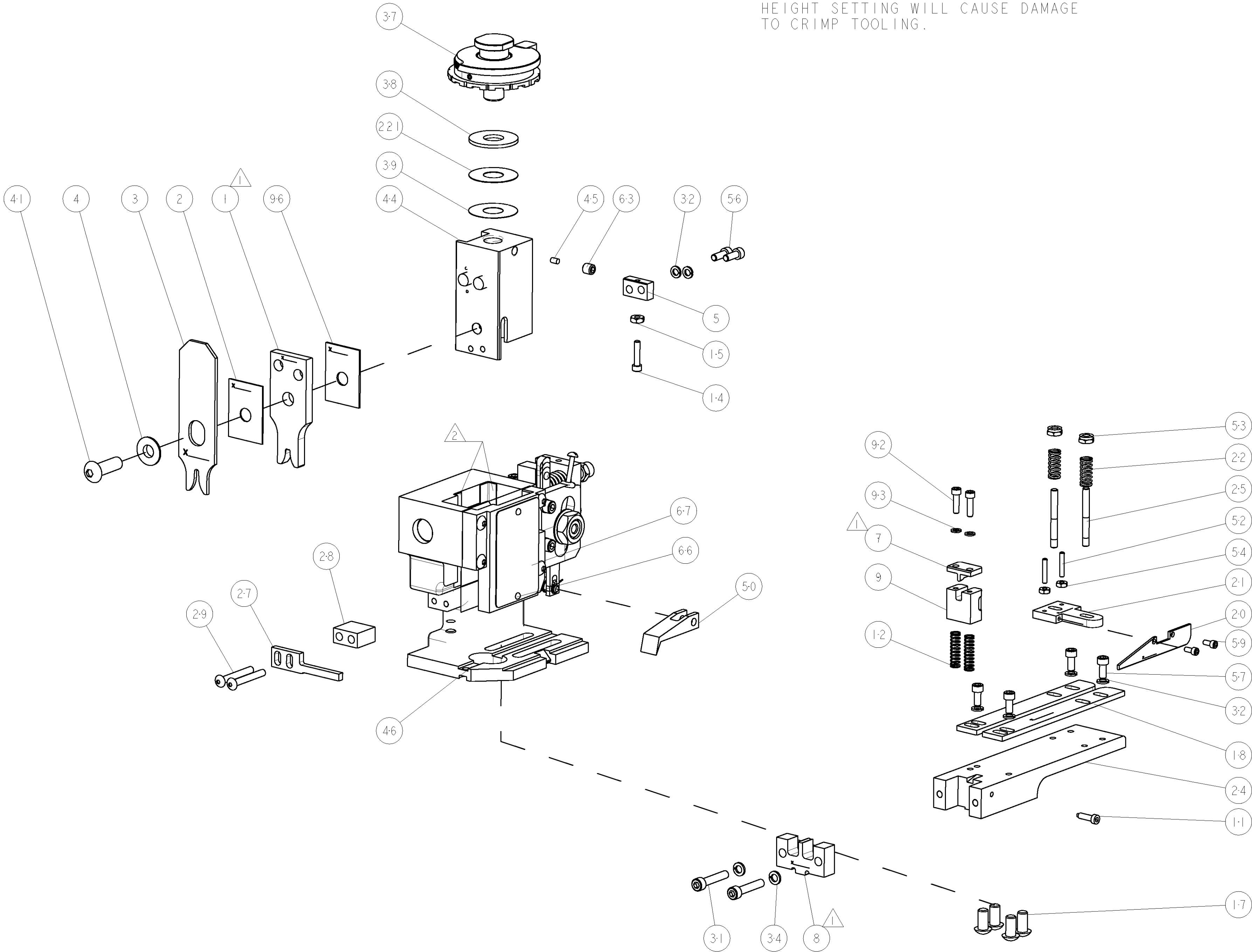
4. GUIDE OFF OF WIRE BARREL



TERMINAL NAME: TERMINAL					
TE PN	LX PTY PN	LX PTY Limited TERMINAL - TE CRIMP SPECS			
1949660	LX4003-1				
-	-	PAD LTR	CRIMP HEIGHT	WIRE SIZE	REF SETTING
-	-	A	2.19±0.05mm [.086±.002]	4mm2	A8
-	-	B	1.94±0.05mm [.076±.002]	3mm2	D8
-	-	C	1.81±0.05mm [.071±.002]	2.5mm2	E7
-	-	D	-	-	-
-	-	CRIMP	SIZE	TYPE	RANGE
-	-	WIRE	3.30mm [.130]	F	2.5-4.0mm2
-	-	INSUL	-	-	-
WIRE STRIP LENGTH	TERM APPL SPEC	FEED	APPL INSTRUCTIONS	SET UP GAGE	
7.26-7.65mm	NONE	10.62mm	408-8039	458638-1	

*WARNING:

ON INSTALLATION, SET WIRE DISC TO LARGEST WIRE SIZE SETTING. USE OF SETTINGS BELOW MIN REQUIRED CRIMP HEIGHT SETTING WILL CAUSE DAMAGE TO CRIMP TOOLING.



LOC		DIST		REVISONS			
A	66	P	LTR	DESCRIPTION		DATE	OWN
		D		ECR-09-000118		05JAN2009	RK
							TE

-	1	1	-	1-469367-0	SHIM	221
-	1	1	-	455888-9	SPACER, CRIMPER	96
-	2	2	-	21024-3	WASHER, SPRG LOCK, REG NO 6	93
-	2	2	-	2-21000-0	SCR, SKT HD CAP 6-32 X .500	92
-	REF	-	-	455745-1	GUARD WINDOW	79
-	-	REF	-	679532-1	INSERT, GUARD	78
-	1	1	-	217238-1	GENERAL INSTRUCTION PKG	72
-	1	1	-	4088039	EF APPL INST 408-8039	71
-	1	1	-	461264-5	PLATE, IDENTIFICATION	67
-	2	2	-	21017-2	SCREW, DRIVE	66
-	1	1	-	21009-2	SCR, SET, SELF LOCKING 1/4-20 X .250	63
-	2	2	-	1-21000-3	SCR, SKT HD CAP 4-40 X .250	59
-	4	4	-	2-21000-6	SCR, SKT HD CAP 8-32 X .375	57
-	2	2	-	9-21000-9	SCR, SKT HD CAP 8-32 X .438	56
-	2	2	-	21018-4	NUT, HEX, REG 4-40	54
-	2	2	-	21022-2	NUT, LOCK, HEX, TORQUE, 8-32	53
-	2	2	-	2-21006-6	SCR, SET, CUP POINT 4-40 X .625	52
-	1	1	-	240635-2	FINGER, FEED	50
-	1	1	-	1-21002-7	SCR, BTN SKT CAP 6-32 X .375	49
-	1	-	-	690501-3	CAM, POST FEED, 1 1/8	48
-	-	1	-	690501-4	CAM, POST-FEED 1 5/8	47
-	1	1	-	458980-8	SUB ASSY, APPLICATOR FRAME	46
-	1	1	-	690191-1	PLUG, NYLON	45
-	1	1	-	1-455674-5	RAM	44
-	1	1	-	7-21002-9	SCR, BTN SKT HD CAP 5/16-24 X 1.00	41
-	1	1	-	690125-1	SHIM SUB-ASSY	39
-	1	1	-	469367-6	SHIM	38
-	1	1	-	879103-2	FINE ADJUST HEAD ASSEMBLY	37
-	2	2	-	21024-5	WASHER, SPRG LOCK, REG NO 10	34
-	6	6	-	21024-4	WASHER, SPRG LOCK, REG NO 8	32
-	2	2	-	3-21000-9	SCR, SKT HD CAP 10-32 X 1.000	31
-	2	2	-	3-24921-0	SCR, BTN SKT HD CAP 8-32 X 1.25	29
-	1	1	-	3-690451-1	SPACER, STRIPPER	28
-	1	1	-	690455-1	STRIPPER, FRONT CASTING	27
-	2	2	-	22354-8	STUD, THREADED	25
-	1	1	-	1633720-1	STRIP GUIDE PLATE	24
-	2	2	-	22281-8	SPRING, DRAG	22
-	1	1	-	464451-1	ARM, STOCK DRAG	21
-	1	1	-	464452-6	DRAG, STOCK	20
-	2	2	-	454204-4	GUIDE, LOWER STRIP	18
-	4	4	-	3-21002-3	SCR, BTN SKT HD CAP 1/4-20 X .500	17
-	1	1	-	21018-5	NUT, HEX, REG 6-32	15
-	1	1	-	2-21000-1	SCR, SKT HD CAP 6-32 X .625	14
-	2	2	-	2-22280-0	SPRING, COMPRESSION	12
-	1	1	-	1-690461-8	STOP, SHEAR	11
-	1	1	-	1633721-1	FLOATING SHEAR HOLDER	9
1	1	1	-	1633342-4	ANVIL, WIRE	8
-	1	1	-	1633722-1	SHEAR BLADE	7
-	-	-	-	-	-	6
-	1	1	-	690753-8	SPACER, TONKER	5
-	1	1	-	238009-8	BLOCK, FL CRIMPER SPACER	4
-	1	1	-	1633675-1	STABILIZER	3
-	1	1	-	455888-6	SPACER, CRIMPER	2
-	-	-	-	-	-	2
1	1	1	-	1-1633609-4	CRIMPER, WIRE	1

-77		-2	-1	U/M	PART NO	DESCRIPTION		ITEM NO
DIMENSIONS:		TOLERANCES UNLESS OTHERWISE SPECIFIED:		DWN		Tyco Electronics		
INCHES		9 PLC ±.01		L. GROSS		Tyco Electronics		
		1 PLC ±.01		28MAR2008		Harrisburg, PA 17105-3608		
		3 PLC ±.001		T. ELBIN		NAME		
		4 PLC ±.0001		W. DEWING		FINE ADJUST END FEED		
		FINISH		PRODUCT SPEC		HDM APPLICATOR		
				APPLICATION SPEC		-		
MATERIAL				WEIGHT		SIZE		
						CAGE CODE		
						DRAWING NO		
						RESTRICTED TO		
						A1 00779		
						C=1855396		
						SCALE		
						3:5		
						SHEET		
						1		
						REV		
						D		

CUSTOMER VIEWABLE ASSEMBLY

Mouser Electronics

Authorized Distributor

Click to View Pricing, Inventory, Delivery & Lifecycle Information:

[TE Connectivity:](#)

[1855396-1](#)