

(0.80 mm) .0315"

QRF8 SERIES

SLIM BODY GROUND PLANE SOCKET

SPECIFICATIONS

For complete specifications and recommended PCB layouts see www.samtec.com?QRF8

- Insulator Material:** Black LCP
- Contact Material:** BeCu
- Ground Plane Material:** Phosphor Bronze
- Plating:** Au or Sn over 50 μm (1.27 μm) Ni
- Current Rating:** Contact: 2.2 A per pin (2 pins powered) Ground Plane: 8.5 A per ground plane (1 ground plane powered)
- Operating Temp Range:** -55 °C to +125 °C
- Voltage Rating:** 215 VAC
- RoHS Compliant:** Yes

Board Mates: QRM8
Cable Mates: EQRD

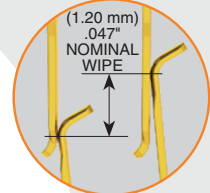


EDGE RATE CONTACT

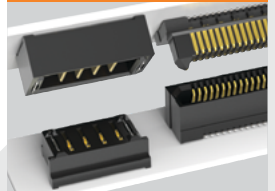
Increased wipe for rugged applications

Integral ground/power plane

Edge Rate® contacts



POWER/SIGNAL APPLICATION



Compatible with UMPT/UMPS for flexible two-piece power/signal solutions

HIGH-SPEED CHANNEL PERFORMANCE

QRM8-DP/QRF8-DP @ 10 mm Mated Stack Height

Rating based on Samtec reference channel. For full SI performance data visit Samtec.com or contact SIG@samtec.com

28
Gbps

ALSO AVAILABLE (MOQ Required)

- Other platings

PROCESSING

- Lead-Free Solderable:** Yes
- SMT Lead Coplanarity:** (0.10 mm) .004" max (018-026) (0.15 mm) .006" max (036-078)* (*.004" stencil solution may be available; contact IPG@samtec.com)

RECOGNITIONS

For complete scope of recognitions see www.samtec.com/quality

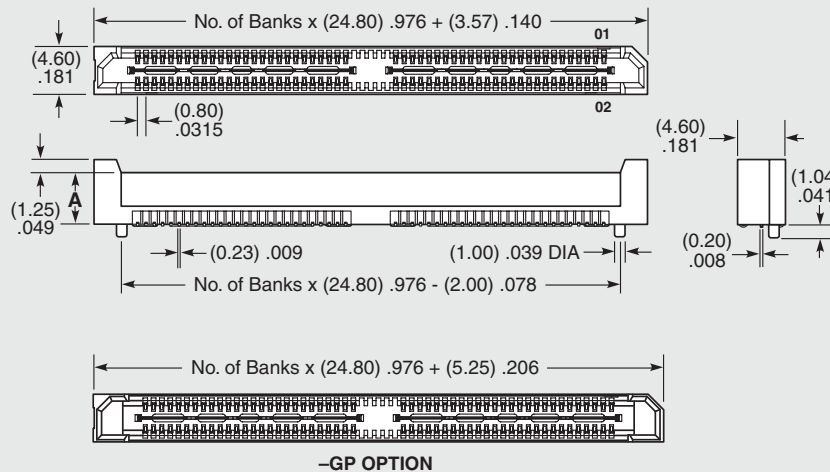


QRF8	PINS PER ROW NO. OF PAIRS	LEAD STYLE	PLATING OPTION	TYPE	A	OTHER OPTION
	<p>-026, -052, -078 (52 total pins per bank = -D)</p> <p>-018, -036, -054 (18 pairs per bank = -D-DP)</p>	<p>-05.0 = 5 mm Body Height</p> <p>-07.0 = 7 mm Body Height</p>	<p>-L = 10 μm (0.25 μm) Gold on contact, Matte Tin on tail</p>	<p>-D = Single-Ended</p> <p>-D-DP = Differential Pair</p>		<p>-GP = Guide Post (Requires -GP on mating connector)</p> <p>-K = (5.00 mm) .197" DIA Polyimide Film Pick & Place Pad</p> <p>-TR = Tape & Reel (-018, -026, -036, -052 only)</p>

LEAD STYLE	A
-05.0	(5.01) .197
-07.0	(7.01) .276

MATED HEIGHT*			
QRF8 LEAD STYLE	QRM8 LEAD STYLE		
	-02.0	-05.0	-07.0
-05.0	(7.00) .276	(10.00) .394	(12.00) .472
-07.0	(9.00) .354	(12.00) .472	(14.00) .551

*Processing conditions will affect mated height. See SO Series for board space tolerances.



- Edge Rate® contacts
- Increased contact wipe
- 10 year MFG
- Guide post option

Notes: Patented

Some lengths, styles and options are non-standard, non-returnable.

Due to technical progress, all designs, specifications and components are subject to change without notice.

WWW.SAMTEC.COM

All parts within this catalog are built to Samtec's specifications. Customer specific requirements must be approved by Samtec and identified in a Samtec customer-specific drawing to apply.

Mouser Electronics

Authorized Distributor

Click to View Pricing, Inventory, Delivery & Lifecycle Information:

Samtec:

[QRF8-026-05.0-L-D-A-GP-K-TR](#) [QRF8-052-05.0-L-D-A](#) [QRF8-026-07.0-L-D-A](#) [QRF8-078-05.0-L-D-A-GP](#) [QRF8-078-01-L-RA-GP](#) [QRF8-018-05.0-L-D-DP-A](#) [QRF8-026-05.0-L-D-A](#) [QRF8-078-05.0-L-D-A](#) [QRF8-026-01-L-RA-GP](#) [QRF8-052-07.0-L-D-A-GP](#) [QRF8-026-01-L-RA-GP-TR](#) [QRF8-026-05.0-L-D-A-GP](#) [QRF8-052-05.0-L-D-A-GP](#) [QRF8-052-01-L-RA-GP](#) [QRF8-026-07.0-L-D-A-GP](#) [QRF8-052-05.0-L-D-A-GP-K](#) [QRF8-026-05.0-S-D-A-GP-K-TR](#) [QRF8-026-05.0-L-D-A-GP-K](#) [QRF8-036-05.0-S-D-DP-A](#) [QRF8-036-07.0-L-D-DP-A-GP](#) [QRF8-052-05.0-S-D-A-GP-K-TR](#) [QRF8-078-05.0-S-D-A-GP](#) [QRF8-018-05.0-S-D-DP-A](#) [QRF8-052-01-S-RA-GP-K-TR](#) [QRF8-052-05.0-L-D-A-GP-TR](#) [QRF8-054-05.0-S-D-DP-A](#) [QRF8-018-05.0-S-D-DP-A-GP-K](#) [QRF8-018-07.0-L-D-DP-A-GP](#) [QRF8-026-07.0-L-D-A-GP-K-TR](#) [QRF8-018-05.0-L-D-DP-A-K](#) [QRF8-026-05.0-S-D-A-GP](#) [QRF8-026-07.0-S-D-A](#) [QRF8-036-05.0-L-D-DP-A-GP](#) [QRF8-052-05.0-L-D-A-K-TR](#) [QRF8-052-05.0-S-D-A-GP](#) [QRF8-052-07.0-L-D-A-GP-K-TR](#) [QRF8-018-07.0-L-D-DP-A-K](#) [QRF8-026-05.0-L-D-A-K-TR](#) [QRF8-036-05.0-L-D-DP-A](#) [QRF8-052-07.0-L-D-A-K](#) [QRF8-078-07.0-L-D-A-GP-K](#) [QRF8-036-07.0-L-D-DP-A](#) [QRF8-078-05.0-L-D-A-K](#) [QRF8-078-05.0-S-D-A](#) [QRF8-078-07.0-L-D-A-GP](#) [QRF8-052-05.0-S-D-A-K-TR](#) [QRF8-052-07.0-L-D-A](#) [QRF8-078-07.0-L-D-A](#) [QRF8-026-01-S-RA-GP-TR](#) [QRF8-026-05.0-L-D-A-K](#) [QRF8-026-05.0-L-D-A-TR](#) [QRF8-052-01-L-RA-GP-TR](#) [QRF8-052-07.0-L-D-A-K-TR](#) [QRF8-078-07.0-L-D-A-K](#) [QRF8-018-05.0-L-D-DP-A-GP](#) [QRF8-052-01-L-RA-GP-K](#) [QRF8-078-05.0-L-D-A-GP-K](#) [QRF8-018-07.0-L-D-DP-A](#) [QRF8-026-07.0-L-D-A-K-TR](#) [QRF8-052-05.0-L-D-A-GP-K-TR](#) [QRF8-052-07.0-S-D-A-GP](#) [QRF8-054-05.0-L-D-DP-A-K](#) [QRF8-036-05.0-L-D-DP-A-K](#) [QRF8-018-07.0-L-D-DP-A-GP-K](#) [QRF8-036-05.0-S-D-DP-A-K](#) [QRF8-018-05.0-S-D-DP-A-GP](#) [QRF8-026-07.0-L-D-A-GP-K](#) [QRF8-018-05.0-L-D-DP-A-GP-K](#) [QRF8-018-05.0-L-D-DP-A-K-TR](#) [QRF8-026-05.0-S-D-A](#) [QRF8-052-01-L-RA-GP-K-TR](#) [QRF8-052-05.0-L-D-A-K](#) [QRF8-052-05.0-S-D-A](#) [QRF8-052-07.0-S-D-A](#) [QRF8-078-01-S-RA-GP](#) [QRF8-036-05.0-L-D-DP-A-K-TR](#) [QRF8-054-07.0-L-D-DP-A-GP](#) [QRF8-026-07.0-S-D-A-GP](#) [QRF8-036-05.0-L-D-DP-A-TR](#) [QRF8-052-07.0-L-D-A-GP-K](#) [QRF8-026-07.0-L-D-A-K](#) [QRF8-018-05.0-L-D-DP-A-TR](#) [QRF8-026-01-S-RA-GP](#) [QRF8-052-05.0-L-D-A-TR](#) [QRF8-018-07.0-S-D-DP-A-GP](#) [QRF8-052-07.0-S-D-A-GP-K-TR](#) [QRF8-052-07.0-S-D-A-GP-K](#) [QRF8-078-07.0-S-D-A-GP-K](#) [QRF8-018-7.0-L-D-DP-A-GP-K-TR](#)