

SPECIFICATIONS:

MATERIALS:

SHELL: STEEL, TIN (80u" TIN OVER 40u" COPPER)
OR NICKEL (80u" NICKEL OVER 40u" COPPER)

INSULATOR: UL 94V-0 RATED BLACK PBT
+30% FIBER-GLASS

CONTACTS: COPPER ALLOY, GOLD PLATED

ELECTRICALS:

CURRENT RATING: 5 AMPS

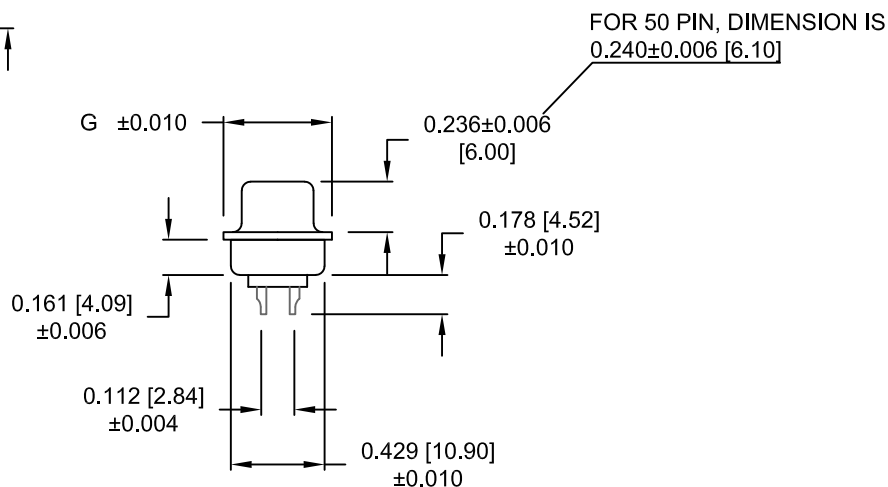
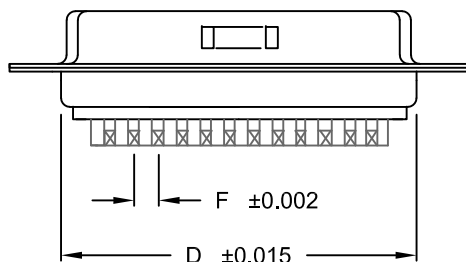
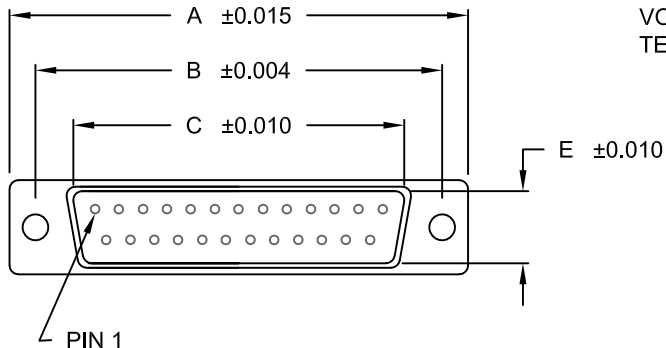
CONTACT RESISTANCE: 15 mOHMS MAX

INSULTOR RESISTANCE: 1000 MOHMS MIN

VOLTAGE: 500V AC FOR 1 MINUTE

TEMPERATURE: -50°C TO +100°C

POS.	A	B	C	D	E	F	G
09	1.213 30.80	0.984 24.99	0.666 16.92	0.756 19.20	0.329 8.36	.109 2.77	0.496 12.60
15	1.541 39.15	1.312 33.32	0.994 25.25	1.091 27.70	0.329 8.36	.109 2.77	0.496 12.60
25	2.087 53.00	1.852 47.04	1.534 38.96	1.618 41.10	0.329 8.36	.109 2.77	0.496 12.60
37	2.732 69.30	2.500 63.50	2.181 55.42	2.256 57.30	0.329 8.36	.109 2.77	0.496 12.60
50	2.638 67.00	2.406 61.00	2.079 52.80	2.169 55.10	.436 11.07	.109 2.77	.602 15.30



171-YYY-10YLYY1

SERIES _____

POSITIONS _____

009
015
025
037
050

GENDER _____

1 = MALE
2 = FEMALE

TERMINATION _____

0 = SOLDER CUP

SHELL PLATING _____

2 = TIN
3 = NICKEL

HARDWARE OPTIONS _____

00 = NO HARDWARE
01 = .098 4-40 CLINCH NUT BOARD SIDE
02 = .236 4-40 CLINCH NUT BOARD SIDE
03 = .236 4-40 CLINCH NUT MATING SIDE
05 = .237 4-40 BOARD LOCK
91 = .237 4-40 SPACER/BOARD LOCK

PLATING OPTIONS _____

1 = GOLD FLASH
2 = 30 MICRO-INCH GOLD

WILL ACCEPT 28-20 AWG CONDUCTORS

RoHS COMPLIANT

UNITS = INCHES [MM] DO NOT SCALE FROM DRAWING



THESE DRAWINGS AND SPECIFICATIONS ARE THE PROPERTY OF NorComp AND SHALL NOT BE REPRODUCED, COPIED OR USED AS THE BASIS FOR THE MANUFACTURE OR SALE OF APPARATUS WITHOUT WRITTEN PERMISSION.

DRAWN:

J. KADEL

DATE:

07/24/2018

NorComp

SCALE:

NTS

SHEET

OF

1

2

REV

12

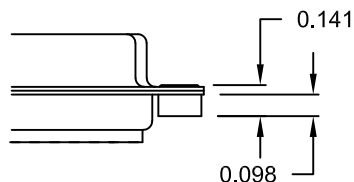
DWG NO.

171-YYY-10YLYY1

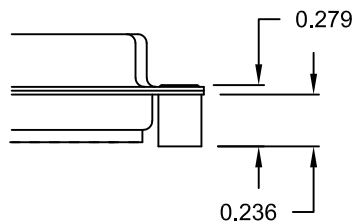
TOLERANCE:
ALL DIMENSIONS ARE ±0.010

ALL CLINCH-NUTS ARE 4-40 INTERNAL THREADS

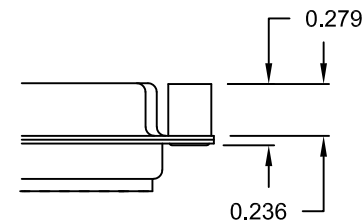
01X 0.098" (BOARD SIDE) - CN1



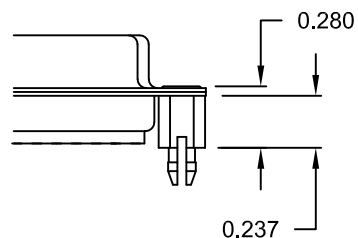
02X 0.236" (BOARD SIDE) - CN2



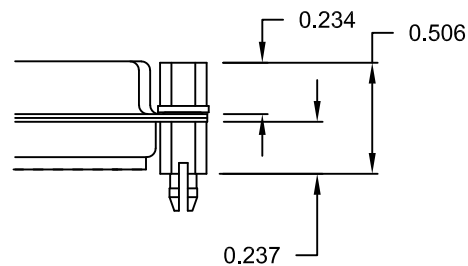
03X..... 0.236" (MATING SIDE) - CN8



05X 0.237" (BOARD SIDE) - CN10



91X 0.237" BOARD SIDE
0.197" MATING SIDE
CN10/SFSO4404



NOTE: 4-40 FEMALE SCREW LOCK IS REMOVABLE

RoHS COMPLIANT

UNITS = INCHES [MM] **DO NOT SCALE FROM DRAWING**



THESE DRAWINGS AND SPECIFICATIONS ARE THE PROPERTY OF NorComp AND SHALL NOT BE REPRODUCED, COPIED OR USED AS THE BASIS FOR THE MANUFACTURE OR SALE OF APPARATUS WITHOUT WRITTEN PERMISSION.

DRAWN:

J. KADEL

DATE:

07/24/2018

NorComp

SCALE:
NTS

SHEET OF
2 2

REV
12

DWG NO.

171-YYY-10YLYY1

Mouser Electronics

Authorized Distributor

Click to View Pricing, Inventory, Delivery & Lifecycle Information:

NorComp:

[171-009-103L011](#) [171-009-103L021](#) [171-009-103L031](#) [171-015-103L021](#) [171-015-103L031](#) [171-025-103L011](#)
[171-025-103L021](#) [171-025-103L031](#) [171-037-103L011](#) [171-037-103L021](#) [171-037-103L031](#) [171-050-103L011](#) [171-](#)
[050-103L021](#) [171-050-103L031](#) [171-050-103L001](#) [171-037-103L001](#) [171-009-103L001](#) [171-015-103L001](#) [171-015-](#)
[103L011](#) [171-009-102L001](#) [171-009-102L021](#) [171-015-102L001](#) [171-015-102L021](#) [171-025-102L031](#) [171-037-](#)
[102L001](#) [171-037-102L031](#) [171-050-102L001](#) [171-050-102L011](#) [171-050-102L021](#) [171-050-102L031](#) [171-025-](#)
[102L001](#)