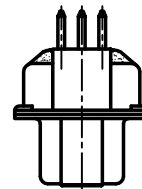
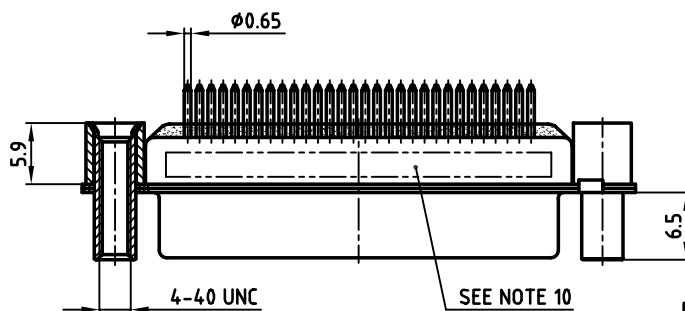
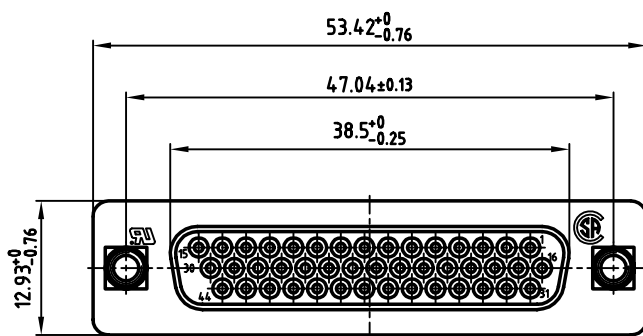
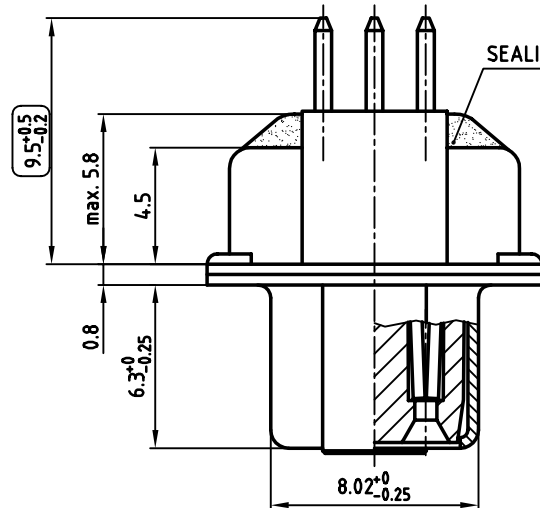


used for:	D-SUB HD FILTER
-----------	-----------------

5:1

SEALING COMPOUND



NOTES:

1. METALSHELLS: STEEL; min. 320μ" TIN
2. INSULATORS: PBT GF UL 94 V-0, BLACK
3. CONTACTS: COPPER ALLOY
PLATING: 8μ" HARD GOLD OVER min. 50μ" NICKEL
4. THREADED REAR SPACER / FRONT THREADED LOCK:
COPPER ALLOY; min. 200μ" TIN over 80μ" NICKEL
5. SLEEVE: COPPER ALLOY; min. 200μ" TIN over 80μ" NICKEL
6. P.C.B. HOLE DRILLINGS ON DRAWING NO.: 16V1H6B
7. CAPACITANCE: SEE TABLE
8. DIELECTRIC WITHSTANDING VOLTAGE: 300V DC
9. MAXIMUM TORQUE VALUE FOR THREAD: 6" LBS
10. CONNECTOR IS PART MARKED: PART-NO. CONEC Y/WW
11. = CHECK DIMENSION

CAPACITANCE	PART NO.
180pF $\pm 20\%$	242A27600X
370pF $\pm 20\%$	242A18400X
830nF $\pm 20\%$	242A18440X

APPROVAL # FREIGABE # DEBLOCKAGE # AUTOR/ZACION # APPROVAL	APPROVAL # FREIGABE # DEBLOCKAGE # AUTOR/ZACION # APPROVAL
CUSTOMER APPROVAL DATE:	
NAME:	TITLE:
COMPANY NAME:	
APPROVAL # FREIGABE # DEBLOCKAGE # AUTOR/ZACION # APPROVAL	APPROVAL # FREIGABE # DEBLOCKAGE # AUTOR/ZACION # APPROVAL

THIS DRAWING MAY NOT BE COPIED OR REPRODUCED IN ANY WAY, AND MAY NOT BE PASSED ON TO A THIRD PARTY WITHOUT WRITTEN PERMISSION.

DO NOT ALTER CAD DRAWING BY HAND

rev.	description	date	name

tolerance



scale:	2:1 (5:1)
--------	-----------

material:	SEE NOTES
-----------	-----------

title: D-SUB HD FILTER FEMALE 44pos. SOLDER PIN STRAIGHT threaded rear spacer and front threaded lock	
-----------------------------------------------------------------------------------------------------------------------	--

dwg no:	AutoCAD 2000	DIN-A
---------	--------------	-------

24K1A444	3
	ch:1/1

part no:	SEE TABLE
----------	-----------



Mouser Electronics

Authorized Distributor

Click to View Pricing, Inventory, Delivery & Lifecycle Information:

[CONEC:](#)

[242A18400X](#)