

PIN RECEPTACLES

FOR .037" - .043" DIAMETER PINS

0331/9353

X3XX-0-15-XX-18-XX-10-0

Solder mount in .071 min. mounting hole
Also available on 24mm wide carrier tape:
1,000 parts per 13" reel
See page 194.10 for Tape & Reel details

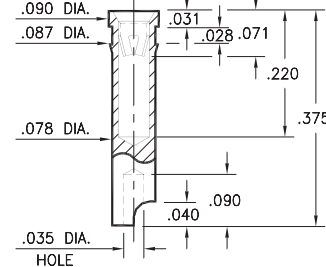


Basic Part Number	Length L	Depth N
0331-0	.150	.127
9353-0	.170	.147

7405

7405-0-18-XX-18-XX-10-0

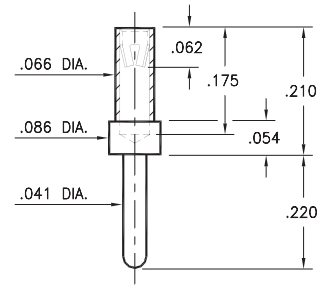
Press-fit in .084 mounting hole
Accepts wire sizes up to .025" dia.



3450

3450-0-15-XX-18-XX-04-0

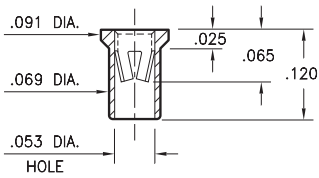
Solder mount in .043 min. mounting hole



7406

7406-0-15-XX-18-XX-10-0

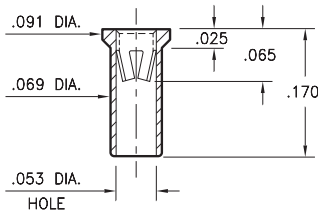
Solder mount in .071 min. mounting hole
Also available on 16mm wide carrier tape:
2,200 parts per 13" reel
See page 194.10 for Tape & Reel details



9354

9354-0-15-XX-18-XX-10-0

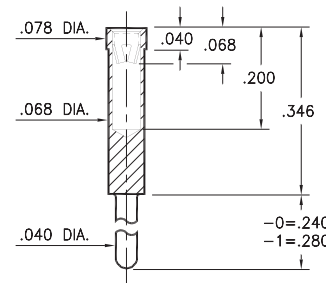
Solder mount in .071 min. mounting hole
Also available on 12mm wide carrier tape:
1,400 parts per 13" reel
See page 194.10 for Tape & Reel details



0319

0319-X-15-XX-18-XX-04-0

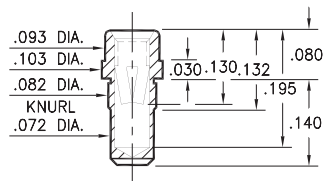
Solder mount in .042 min. mounting hole



9357

9357-0-15-XX-18-XX-10-0

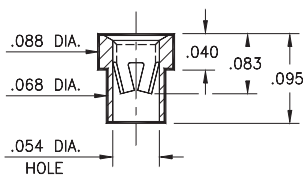
Press-fit in .078 mounting hole



3520

3520-0-15-XX-18-XX-10-0

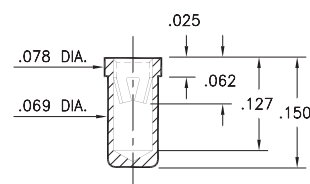
Solder mount in .070 min. mounting hole



8331

8331-0-15-XX-18-XX-10-0

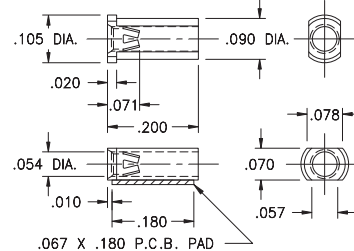
Solder mount in .071 min. mounting hole
Also available on 16mm wide carrier tape:
1,900 parts per 13" reel
See page 194.10 for Tape & Reel details



6628

6628-0-18-XX-18-XX-10-0

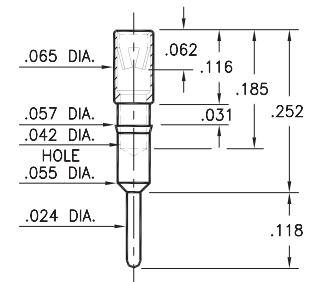
Surface mount
Also available on 12mm wide carrier tape:
3,700 parts per 13" reel
See page 194.10 for Tape & Reel details



1313

1313-0-15-XX-18-XX-04-0

Press-fit in .056 mounting hole



SPECIFICATIONS:

Shell Material: Brass Alloy 360, 1/2 Hard

Contact Material: Beryllium Copper Alloy 172, HT

Dimensions: Inches

Tolerances On: Lengths: ±.005

Diameters: ±.002

Angles: ± 2°



ORDER CODE: XXXX - X - XX - XX - 18 - XX - XX - 0

BASIC PART #

SPECIFY SHELL FINISH:

01 200 μ" TIN/LEAD OVER NICKEL

◆ 80 200 μ" TIN OVER NICKEL (RoHS)

◆ 15 10 μ" GOLD OVER NICKEL (RoHS)

SPECIFY CONTACT FINISH:

01 200 μ" TIN/LEAD OVER NICKEL

◆ 80 200 μ" TIN OVER NICKEL (RoHS)

◆ 27 30 μ" GOLD OVER NICKEL (RoHS)

SELECT CONTACT:

#18 CONTACT (DATA ON PAGE 257)

(For alternate contact choices, see group L on page 248)



Mouser Electronics

Authorized Distributor

Click to View Pricing, Inventory, Delivery & Lifecycle Information:

Mill-Max:

[9354-0-15-01-18-01-10-0](#) [3520-0-15-01-18-01-10-0](#) [0331-0-15-80-18-27-10-0](#) [0319-0-15-80-18-80-04-0](#) [0331-0-15-15-18-27-10-0](#) [9353-0-15-15-18-27-10-0](#) [6628-0-18-01-18-27-10-0](#) [3520-0-15-01-18-27-10-0](#) [9354-0-15-15-18-27-10-0](#) [9354-0-15-15-18-14-10-0](#) [0331-0-15-01-18-27-10-0](#) [7405-0-18-15-18-27-10-0](#) [8331-0-15-01-18-14-10-0](#) [1313-0-15-01-18-01-04-0](#) [1313-0-15-01-18-27-04-0](#) [0331-0-15-01-18-01-10-0](#) [0319-1-15-01-18-01-04-0](#) [0319-1-15-01-18-27-04-0](#) [9353-0-15-80-18-27-10-0](#) [0319-0-15-15-18-27-04-0](#) [0319-1-15-15-18-27-04-0](#) [1313-0-15-15-18-27-04-0](#) [3450-0-15-15-18-27-04-0](#) [3520-0-15-15-18-27-10-0](#) [7406-0-15-15-18-27-10-0](#) [8331-0-15-15-18-27-10-0](#) [0319-0-15-80-18-14-04-0](#) [9353-0-15-00-00-00-10-0](#) [9354-0-15-00-00-00-10-0](#) [7405-0-18-00-00-00-10-0](#) [7406-0-15-00-00-00-10-0](#) [9359-0-15-00-00-00-10-0](#) [0319-1-15-00-00-00-04-0](#) [1313-0-15-00-00-00-04-0](#) [3450-0-15-00-00-00-04-0](#) [8331-0-15-00-00-00-10-0](#) [6628-0-18-00-00-00-10-0](#) [3520-0-15-00-00-00-10-0](#) [0319-0-15-00-00-00-04-0](#) [0331-0-15-00-00-00-10-0](#) [7406-0-15-80-18-14-10-0](#) [3520-0-15-01-18-14-10-0](#) [0319-1-15-01-18-14-04-0](#) [3450-0-15-01-18-14-04-0](#) [3450-0-15-80-18-14-04-0](#) [0319-0-15-01-18-14-04-0](#) [0319-1-15-80-18-14-04-0](#) [0331-0-15-80-18-14-10-0](#) [1313-0-15-80-18-14-04-0](#) [3520-0-15-80-18-14-10-0](#) [0331-0-15-01-18-14-10-0](#) [1313-0-15-01-18-14-04-0](#) [7405-0-18-01-18-14-10-0](#) [6628-0-18-80-18-14-10-0](#) [9353-0-15-01-18-14-10-0](#) [9354-0-15-01-18-14-10-0](#) [9353-0-15-80-18-14-10-0](#) [7406-0-15-01-18-14-10-0](#) [7405-0-18-80-18-14-10-0](#) [9354-0-15-80-18-14-10-0](#) [8331-0-15-80-18-14-10-0](#) [6628-0-18-01-18-14-10-0](#)