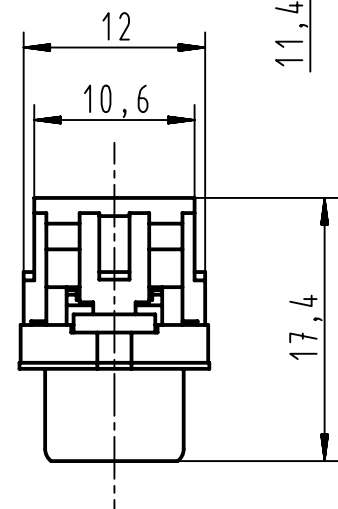
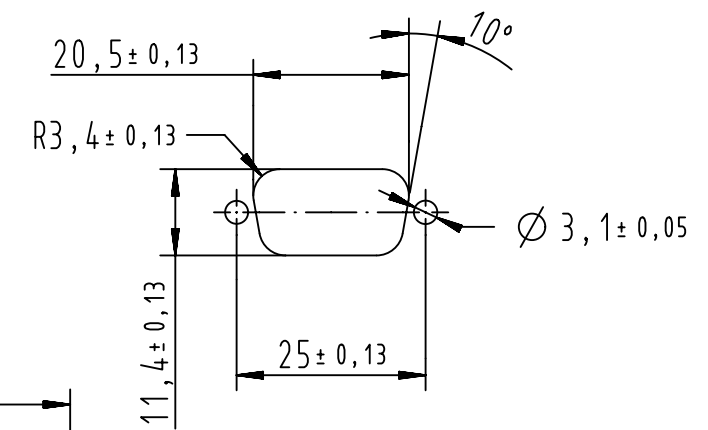
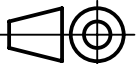



Recommended panel cutout dimensions
for rear mounting
According to CECC 75 301-802



After cover closing

09661287702			PL3	4-40UNC	 All Dimensions in mm Original Size DIN A4	Scale 2:1	Free size tol.		Ref.	
09661286702			PL2	4-40UNC		 All rights reserved Department EC PD - FR	Created by DOUGE	Inspected by BAGDIKIAN	Standardisation HOFFMANN	Sub.
09661287701			PL3	M3	HARTING Electronics GmbH D-32339 Espelkamp		Title D-Sub IDC 9P male straight			Date 2013-04-23
09661286701			PL2	M3		Type TB			Number 0966128X70X	Doc-Key / ECM-Nr. 100527181/UGD/001/A 5300000858839
Part number			Performance level	Nut thread	Rev. A			Page 1/1		

Mouser Electronics

Authorized Distributor

Click to View Pricing, Inventory, Delivery & Lifecycle Information:

[HARTING:](#)

[09661287702](#) [09661286702](#) [09661286701](#)