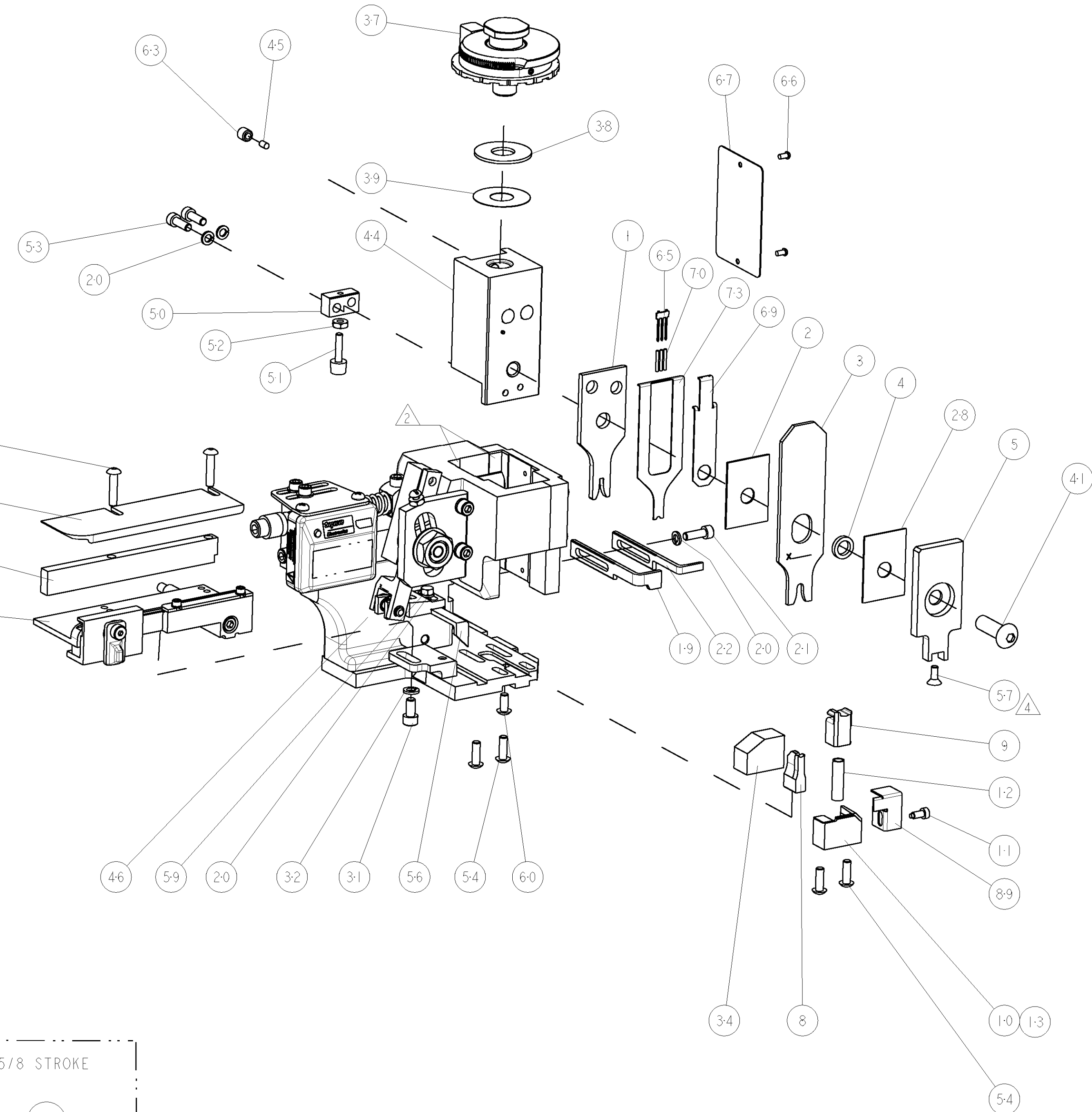

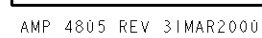


- ① RECOMMENDED SPARE PARTS
- ② GREASE LIGHTLY
- ③ GUARD MUST BE IN PLACE WHEN OPERATING APPLICATOR IN A BENCH MACHINE
- ④ APPLY TORO-SEAL IN ALLEN SOCKET TO FILL HOLE AFTER FLAT HD HAS BEEN ADJUSTED TO CORRECT HEIGHT AT QUALIFICATION. APPLY PN 1-23419-5 LOC-TITE TO THREADS.




REF SETTING
B4
B8
D0
-

3 3	-	-	-	REF	..	455749-1	GUARD WINDOW	116
	-	-	REF	-	..	679532-1	INSERT, GUARD	115
	-	1	1	1	1	1-21002-7	SCR, BTN SKT HD CAP 6-32 X .375	91
	-	1	1	1	1	318563-1	GUARD, FRONT CHIP	89
	-	1	1	1	1	1490525-3	DEPRESSOR, WIRE	73
	-	1	1	1	1	4088040	SF APPL INST 408-8040	72
	-	1	1	1	1	217238-1	GENERAL INSTRUCTION PKG	71
	-	3	3	3	3	2-23147-2	SPRING, COMPRESSION	70
	-	1	1	1	1	1490524-1	DEPRESSOR, SPACER	69
	-	1	1	1	1	461264-5	PLATE, IDENTIFICATION	6
4	-	2	2	2	2	21017-2	SCREW, DRIVE	66
	-	1	1	1	1	1424350-1	HOLDER, PIN, WIRED	65
	-	1	1	1	1	21009-2	SCR, SET, SELF LOCKING 1/4-20 X .250	63
	-	1	1	1	1	22733-8	SCR, BHSC, SELF-LOCKING, 8-32 X .375	60
	-	1	1	1	1	2-22603-0	SCR, HEX HD CAP 8-32 X .312	59
	-	1	1	1	1	1-21003-9	SCR, FLT SKT HD CAP 6-32 X .375	57
	-	1	1	1	1	458537-2	PAWL, FEED	56
	-	4	4	4	4	2-21002-2	SCR, BTN SKT HD CAP 8-32 X .500	54
	-	2	2	2	2	2-21000-7	SCR, SKT HD CAP 8-32 X .500	53
	-	1	1	1	1	21018-5	NUT, HEX, REG 6-32	52
1	-	1	1	1	1	811242-2	BUMPER, HOLD DOWN	51
	-	1	1	1	1	690753-1	SPACER, TONKER	50
	-	-	1	-	..	690602-6	CAM, PRE FEED, I 5/8	49
	-	-	-	1	..	690602-5	CAM, PRE FEED, I 1/8	48
	-	1	-	-	1	690501-4	CAM, POST FEED, I 5/8	47
	-	1	1	1	1	459456-1	APPL. BASIC SUB ASSY (SIDE WISE MOCA)	46
	-	1	1	1	1	690191-1	PLUG,NYLON	45
	-	1	1	1	1	1-455673-4	RAM, SIDE FEED	44
	-	1	1	1	1	7-21002-9	SCR, BTN SKT HD CAP 5/16-24 X 1.00	41
	-	1	1	1	1	690125-1	SHIM SUB-ASSY	39
1	-	1	1	1	1	690124-5	WASHER, RAM (.062)	38
	-	1	1	1	1	879103-2	FINE ADJUST HEAD ASSEMBLY	37
	-	1	1	1	1	3-690786-5	TERMINAL SUPPORT	34
	-	2	2	2	2	2-21002-4	SCR, BTN SKT HD CAP 8-32 X .750	33
	-	1	1	1	1	21024-5	WASHER, SPRG LOCK, REG NO 10	32
	-	1	1	1	1	3-21000-4	SCR, SKT HD CAP 10-32 X .375	31
	-	1	1	1	1	1320908-6	SPACER, STRIP GUIDE	30
	-	1	1	1	1	1633091-3	ASSEMBLY, STRIP GUIDE	29
	-	1	1	1	1	455888-6	SPACER, CRIMPER	28
	-	1	1	1	1	1320928-1	PLATE, STRIP GUIDE	24
1	-	1	-	-	1	690472-2	STRIPPER	22
	-	1	1	1	1	2-21000-7	SCR, SKT HD CAP 8-32 X .500	21
	-	4	4	4	4	21024-4	WASHER, SPRG LOCK, REG NO 8	20
	-	-	1	1	-	691353-1	STRIPPER	19
	-	1	-	-	-	679625-2	SHEAR HOLDER, FRONT (NO CUT)	13
	-	1	1	1	1	3-22280-3	SPRING, COMPRESSION	12
	-	1	1	1	1	690461-2	STOP, SHEAR	11
	-	-	1	1	1	1-690459-0	SHEAR HOLDER, FRONT	10
	-	1	1	1	1	318707-2	FLOATING SHEAR, FRONT	9
	1	1	1	1	1	2-1633110-5	ANVIL, COMBINATION .090	8
1	-	-	-	-	..	-	-	7
	-	-	-	-	..	-	-	6
	-	1	1	1	1	318701-9	DEPRESSOR, SHEAR	5
	-	1	1	1	1	1-238011-0	BLOCK, CRIMPER SPACER	4
	1	1	1	1	1	9-683454-5	CRIMPER, INSULATION 0	3
	-	1	1	1	1	455888-8	SPACER, CRIMPER	2
	1	1	1	1	1	3-456406-3	CRIMPER, WIRE PREMIUM	1



CUSTOMER VIEWABLE ASSEMBLY

Mouser Electronics

Authorized Distributor

Click to View Pricing, Inventory, Delivery & Lifecycle Information:

[TE Connectivity:](#)

[1855373-1](#)