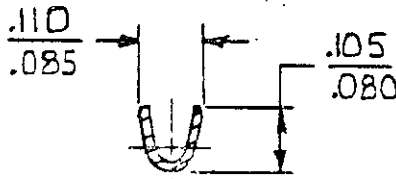
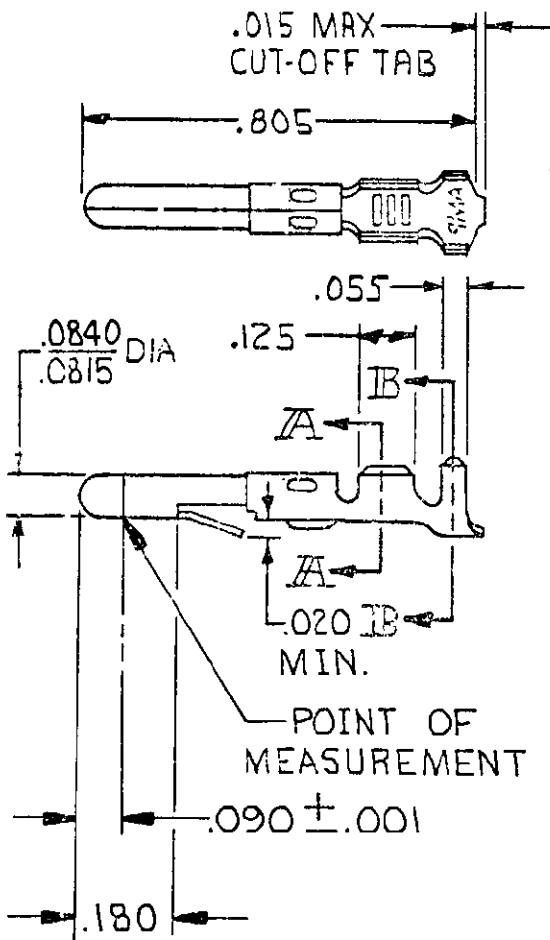


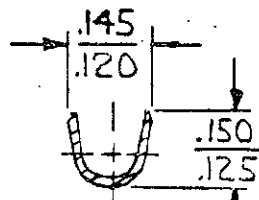
© COPYRIGHT

REVISIONS

| LTR | DESCRIPTION | DATE | APPROVED | P/F |
|-----|---------------------------|---------|----------|-----|
| S1 | REVISED PER ECO-11-005294 | 05APR11 | HMR | |



SECT. A-A



SECT. B-B

- ① .000030 GOLD INSIDE WIRE BARREL & ON TIP OF PINS; REMAINDER OF CONTACT IS NICKEL PLATED.
- ② .000050 NICKEL OVER ENTIRE CONTACT WITH .000030 GOLD OVER MATING AREA.

| | | | |
|---------|---|--------------|----------|
| GOLD | ② | .012 PH. BRZ | 60618 -6 |
| GOLD | ① | BRASS | -5 |
| PRE-TIN | | PH. BRZ | -4 |
| PRE-TIN | | .012 BRASS | 60618 -1 |
| FINISH | | MATERIAL | PART NO |

UNLESS OTHERWISE SPECIFIED DIMENSIONS ARE IN INCHES. TOLERANCES ON: DECIMALS ±.015 ANGLES ±

CONTRACT NO
DR *M. FEHER 11-26-79*
CHK *D. Heide 1/4/80*

TE TE Connectivity
NAME **PIN, LOOSE PIECE, COMMERCIAL MATE-N-LOK**

MATERIAL
SEE TABLE

INSULATION DIA
.100 MAX
WIRE RANGE
24-18 AWG.

APPD *[Signature]* 1-7-80
APPD
SIZE **A** CODE IDENT NO **00779** DRAWING NO **60618**

FINISH
SEE TABLE

SCALE

SHEET

Mouser Electronics

Authorized Distributor

Click to View Pricing, Inventory, Delivery & Lifecycle Information:

[TE Connectivity:](#)

[60618-5](#)