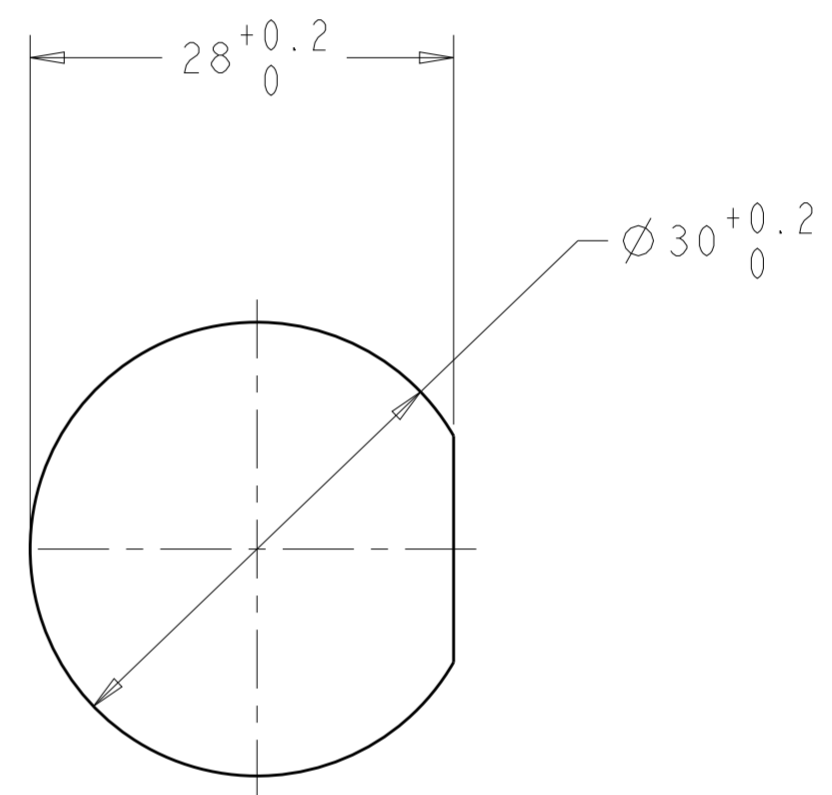
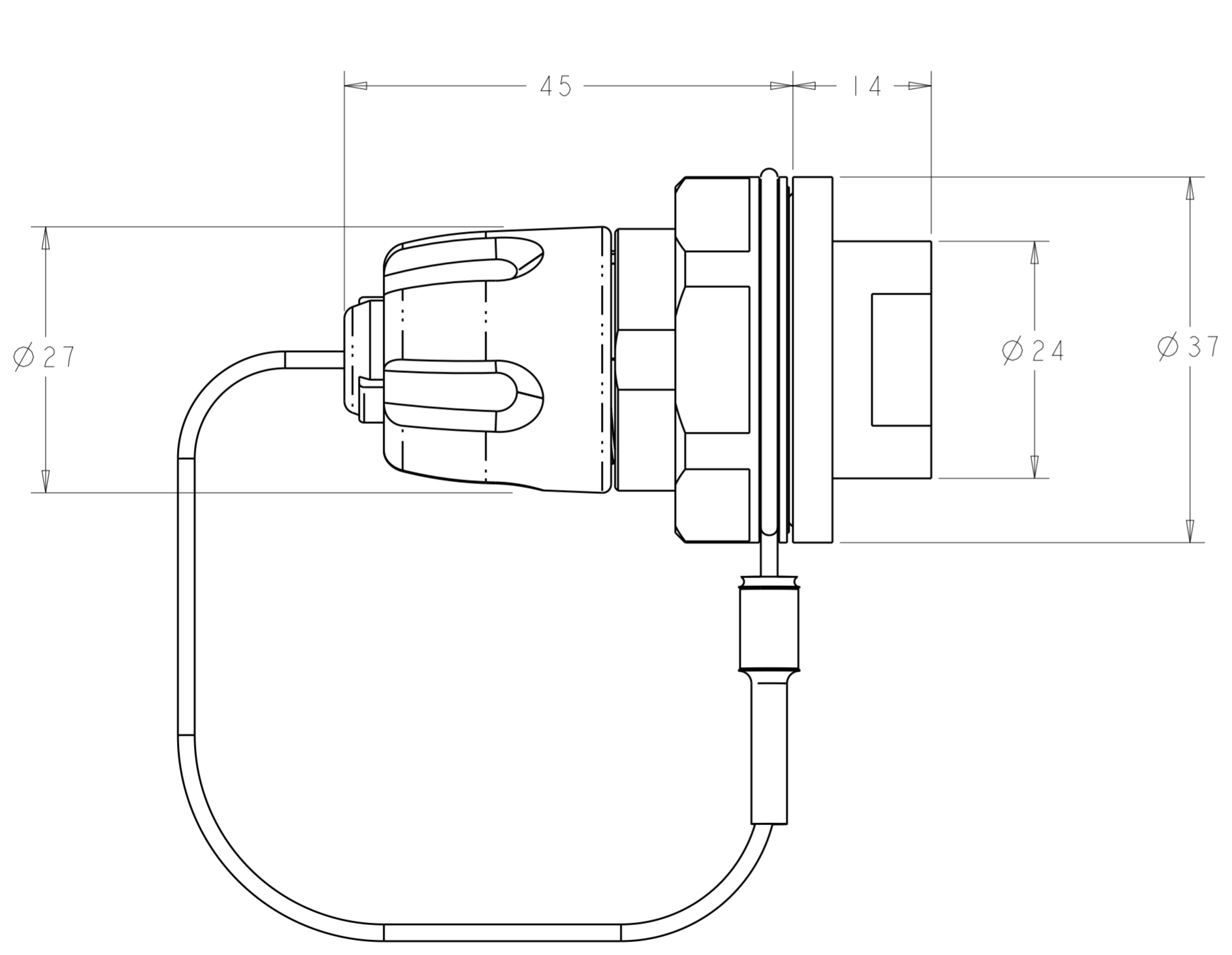


1. ASSEMBLY SHOWN FOR REFERENCE ONLY.  
SHIPPED LOOSE PIECE AS SHOWN ON PAGE 2.
2. ALL ASSEMBLY DIMENSIONS ARE FOR REFERENCE ONLY.
- 3 PANEL THICKNESS: 1mm MINIMUM, 6.5mm MAXIMUM.
4. COMPLETE THE CONNECTOR ASSEMBLY BY ADDING EACH OF THE FOLLOWING PRO BEAM JR KITS:  
A. EXPANDED BEAM INSERT ASSEMBLY KIT  
B. FERRULE KIT, ONE PER FIBER

P	LTR	DESCRIPTION	DATE	DWN	APVD
	A2	ECR-16-003336	04MAR2016	KG	DW
	B	ECR-16-004825	07APR2016	KG	DW
	C	ECR-16-006882	18MAY2016	KG	DW
	D	ECR-17-012188	12SEP2017	KG	DW



3 RECOMMENDED PANEL CUT-OUT

NICKEL ALUMINUM BRONZE	NONE	6828413-3
ALUMINUM	BLACK Zn-Ni	6828413-2
ALUMINUM	HARD ANODIZE	6828413-1
HOUSING ALLOY	FINISH	PART NUMBER

THIS DRAWING IS A CONTROLLED DOCUMENT.

DWN  
K. GLATFELTER  
08 JUN 2006

CHK  
D. WERTMAN  
14 JUN 2006

APVD  
D. WERTMAN  
14 JUN 2006

TE Connectivity

DIMENSIONS:  
mm

TOLERANCES UNLESS OTHERWISE SPECIFIED:

0 PLC ±

1 PLC ±

2 PLC ±

3 PLC ±

4 PLC ±

ANGLES ±

FINISH

PRODUCT SPEC  
-

APPLICATION SPEC  
-

WEIGHT  
-

CUSTOMER DRAWING

NAME  
CONNECTOR SHELL KIT, PRO BEAM JR.  
D-HOLE LP BULKHEAD, 2.1mm

SIZE  
A2

CAGE CODE  
00779

DRAWING NO  
6828413

RESTRICTED TO  
-

SCALE  
2:1

SHEET  
1

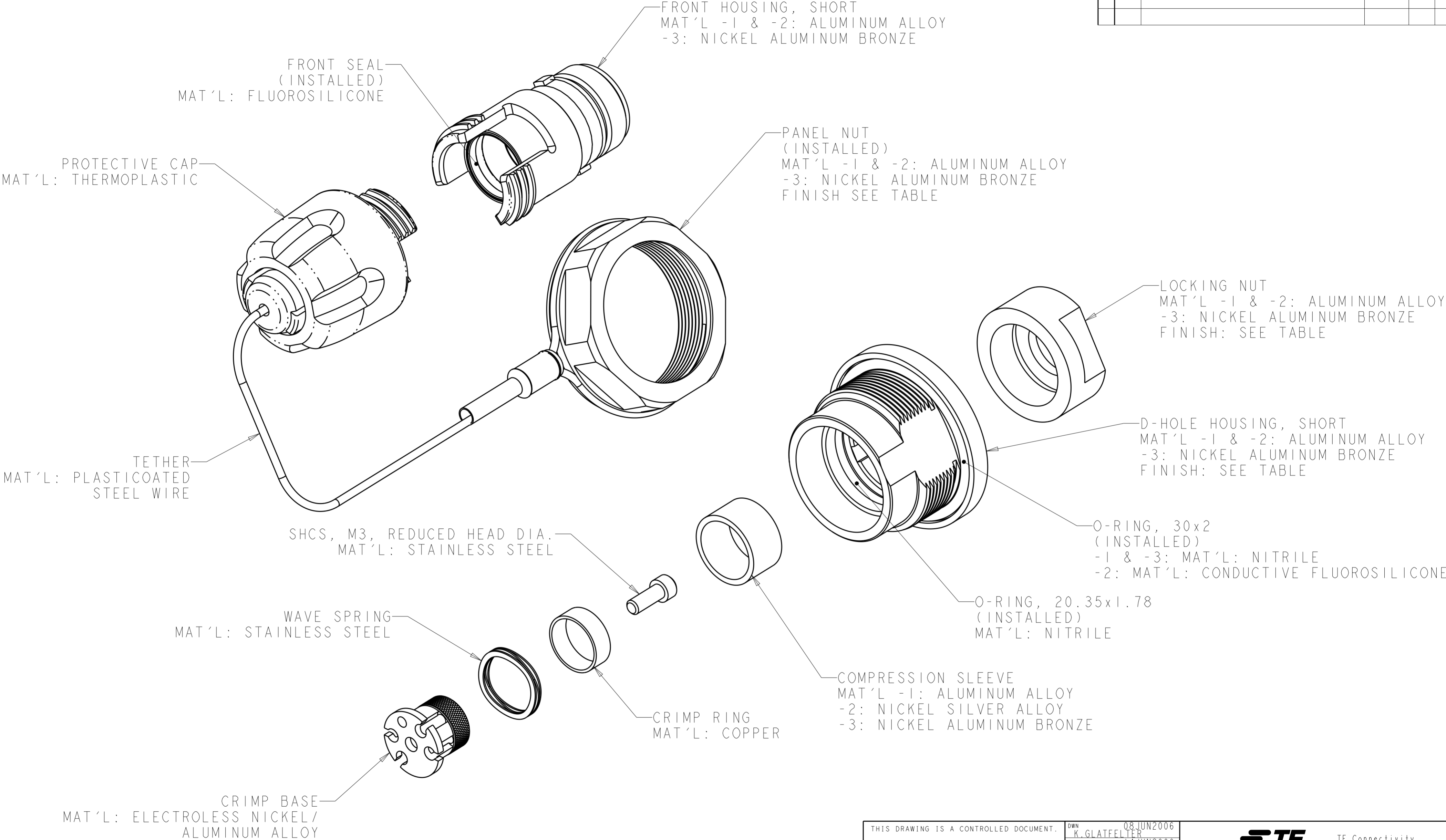
OF  
2

REV  
D

1471-9 (3/13)

REVISIONS					
P	LTR	DESCRIPTION	DATE	DWN	APVD
	-	SEE SHEET 1	-	-	-

1. SHIPPED LOOSE PIECE AS SHOWN.



THIS DRAWING IS A CONTROLLED DOCUMENT.		DWN K. GLATFELTER CHK D. WERTMAN APVD D. WERTMAN	08 JUN 2006 14 JUN 2006 14 JUN 2006	TE Connectivity	
DIMENSIONS: mm		PRODUCT SPEC -		NAME CONNECTOR SHELL KIT, PRO BEAM JR. D-HOLE LP BULKHEAD, 2.1mm	
TOLERANCES UNLESS OTHERWISE SPECIFIED: 0 PLC ± 1 PLC ± 2 PLC ± 3 PLC ± 4 PLC ± ANGLES ± FINISH		APPLICATION SPEC -		SIZE A2	CAGE CODE 00779
MATERIAL AS LISTED		WEIGHT -		DRAWING NO. C-6828413	RESTRICTED TO -
SEE TABLE SHEET 1		CUSTOMER DRAWING		SCALE 2:1	SHEET 2 OF 2
				REV D	