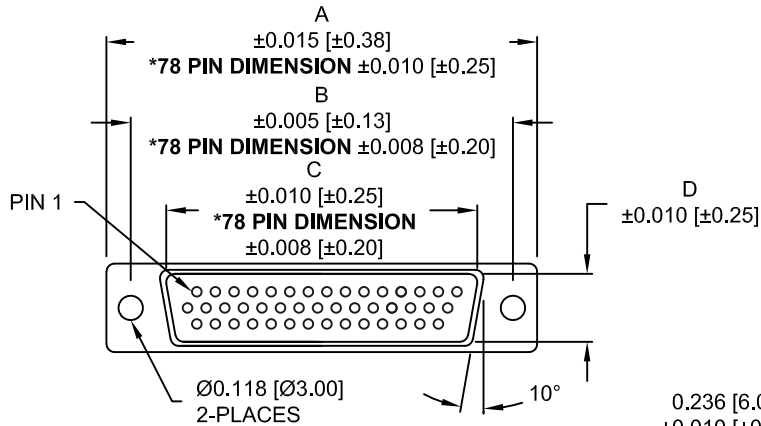


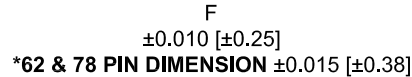
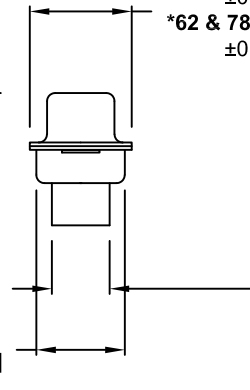
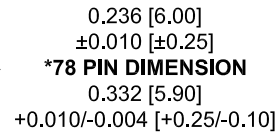
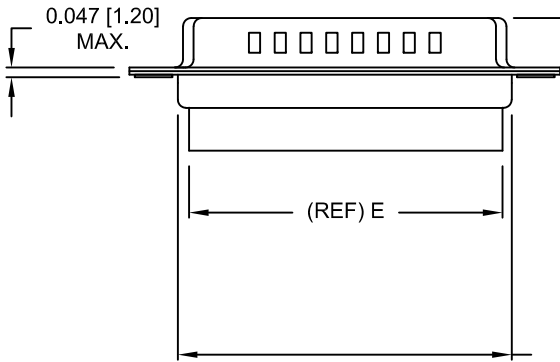
DESCRIPTION: MALE - CRIMP AND LOAD

**\*\*NOTE: CONTACTS MUST BE PURCHASED SEPARATELY\*\***



4 ROWS

No. OF PINS	DIMENSIONS							
	A	B	C	D	E	F	G	H
15	1.213	0.984	0.666	0.323	0.610	0.759	0.494	0.421
	30.81	24.99	16.92	8.20	15.50	19.28	12.55	10.70
26	1.541	1.312	0.994	0.323	0.964	1.083	0.494	0.421
	39.14	33.32	25.25	8.20	24.50	27.51	12.55	10.70
44	2.088	1.852	1.534	0.323	1.494	1.618	0.494	0.421
	53.04	47.04	38.96	8.20	37.95	41.10	12.55	10.70
62	2.729	2.500	2.182	0.319	2.142	2.272	0.494	0.421
	69.32	63.50	55.42	8.10	54.40	57.71	12.55	10.70
78	2.644	2.406	2.081	0.439	2.035	2.169	0.605	0.527
	67.16	61.11	52.86	11.15	51.70	55.10	15.37	13.40



**180-YYY-17YLYY0**

SERIES \_\_\_\_\_  
 POSITIONS \_\_\_\_\_  
 015 \_\_\_\_\_  
 026 \_\_\_\_\_  
 044 \_\_\_\_\_  
 062 \_\_\_\_\_  
 078 \_\_\_\_\_  
 GENDER \_\_\_\_\_  
 1 = MALE \_\_\_\_\_  
 TERMINATION \_\_\_\_\_  
 7 = CRIMP & LOAD \_\_\_\_\_  
 SHELL PLATING \_\_\_\_\_  
 2 = TIN (GROUND INDENTS) \_\_\_\_\_  
 3 = NICKEL (GROUND INDENTS) \_\_\_\_\_  
 RoHS COMPLIANT (230°C) \_\_\_\_\_  
 HARDWARE OPTIONS \_\_\_\_\_  
 00 = NO HARDWARE \_\_\_\_\_  
 01 = .157" CLINCH NUT (BOARD SIDE) \_\_\_\_\_  
 02 = .250" CLINCH NUT (BOARD SIDE) \_\_\_\_\_  
 03 = .250" CLINCH NUT (MATING SIDE) \_\_\_\_\_  
 PLATING OPTIONS \_\_\_\_\_  
 0 = NO CONTACTS \_\_\_\_\_

**MATERIAL:**

SHELL: STEEL, TIN OR NICKEL PLATED  
 INSULATOR: PBT, UL 94V-O RATED,  
 +30% FIBER-GLASS

**ELECTRICAL:**

INSULATION RESISTANCE: 1,000 MOhms MIN.  
 VOLTAGE: 500VAC FOR 1 MINUTE  
 TEMPERATURE: -50° C TO 100° C

UNITS = inch[mm]

**DO NOT SCALE FROM DRAWING**



THESE DRAWINGS AND SPECIFICATIONS ARE THE PROPERTY OF NorComp AND SHALL NOT BE REPRODUCED, COPIED OR USED AS THE BASIS FOR THE MANUFACTURE OF SALE OF APPARATUS WITHOUT WRITTEN PERMISSION.

DRAWN: J KADEL		DATE: 07-16-18	
SCALE: NTS	SHEET 1 OF 2	REV 20	
DWG NO. 180-YYY-17YLYY0			

**RoHS COMPLIANT**

**NorComp**

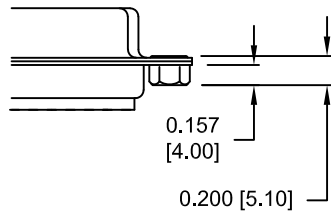
DESCRIPTION: CLINCH NUT HARDWARE

ALL CLINCH-NUTS ARE 4-40 INTERNAL THREADS

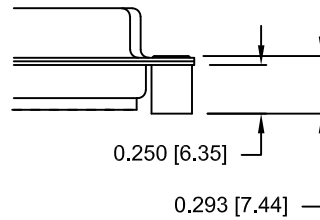
UNITS = inch[mm]

TOLERANCE:  
ALL DIMENSIONS ARE ±0.010

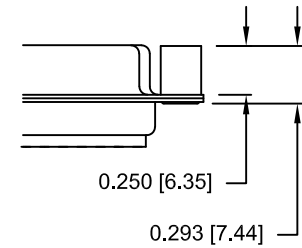
01X ..... 0.157" (BOARD SIDE)



02X ..... 0.250" (BOARD SIDE)



03X..... 0.250" (MATING SIDE)



DO NOT SCALE FROM DRAWING



THESE DRAWINGS AND SPECIFICATIONS ARE THE PROPERTY OF NorComp AND SHALL NOT BE REPRODUCED, COPIED OR USED AS THE BASIS FOR THE MANUFACTURE OF SALE OF APPARATUS WITHOUT WRITTEN PERMISSION.

DRAWN:  
J KADEL

DATE:  
07-16-18

NorComp

SCALE: NTS SHEET 2 OF 2 REV 20

DWG NO. 180-YYY-17YLYY0

RoHS COMPLIANT

# Mouser Electronics

Authorized Distributor

Click to View Pricing, Inventory, Delivery & Lifecycle Information:

## NorComp:

[180-078-173L000](#) [180-015-173L010](#) [180-015-173L020](#) [180-015-173L030](#) [180-026-173L010](#) [180-026-173L020](#)  
[180-026-173L030](#) [180-044-173L010](#) [180-044-173L020](#) [180-044-173L030](#) [180-062-173L010](#) [180-062-173L020](#) [180-](#)  
[062-173L030](#) [180-078-173L010](#) [180-078-173L020](#) [180-078-173L030](#) [180-044-173L000](#) [180-015-173L000](#) [180-026-](#)  
[173L000](#) [180-062-173L000](#) [180-015-172L000](#) [180-015-172L010](#) [180-015-172L020](#) [180-015-172L030](#) [180-026-](#)  
[172L000](#) [180-026-172L010](#) [180-026-172L020](#) [180-026-172L030](#) [180-044-172L000](#) [180-044-172L010](#) [180-044-](#)  
[172L020](#) [180-044-172L030](#) [180-062-172L000](#) [180-062-172L010](#) [180-062-172L020](#) [180-062-172L030](#) [180-078-](#)  
[172L000](#) [180-078-172L010](#) [180-078-172L020](#) [180-078-172L030](#) [180-062-172-000](#) [180-026-172-000](#) [180-044-172-](#)  
[000](#) [180-078-172-000](#) [180-015-172-000](#)