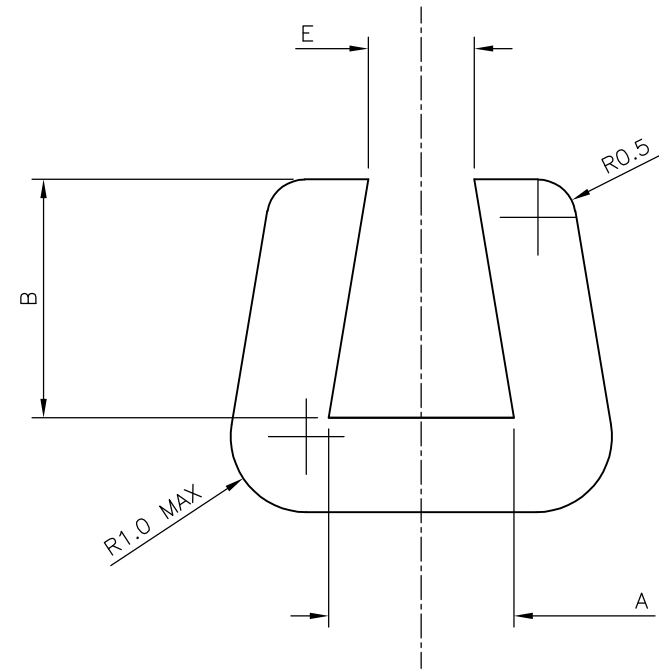


LOC	DIST	REVISIONS				
E	B	P	LTR	DESCRIPTION	DATE	APVD
			A	FIRST ISSUE	17OCT07	AM FWK

GROMMET STRIP NOTES

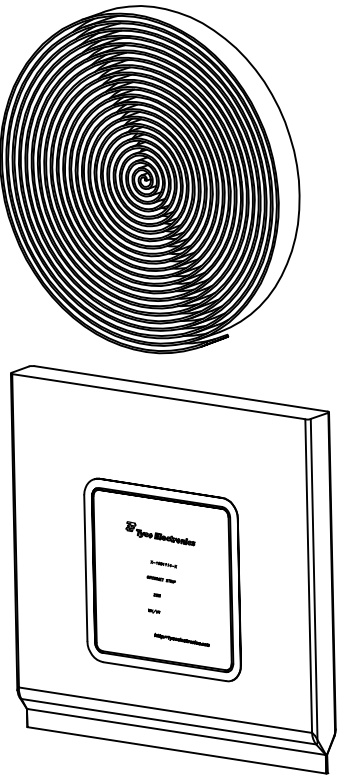
1. MATERIAL – TYPE – LOW DENSITY POLYETHENE
COLOUR – NATURAL
- 2 INDIVIDUAL PACKAGING DETAILS
- 3 BULK PACKAGING DETAILS
- 4 NOT RELEASED FOR PRODUCTION
5. FOR TECHNICAL DATA REFER TO YOUR LOCAL TYCO ELECTRONICS SALES OFFICE
6. ALL DIMENSIONS ARE NOMINAL FOR REFERENCE ONLY UNLESS OTHERWISE STATED



NOTE – MAXIMUM INEQUALITY IN B = 0.25mm

2 INDIVIDUAL PACKAGING DETAILS

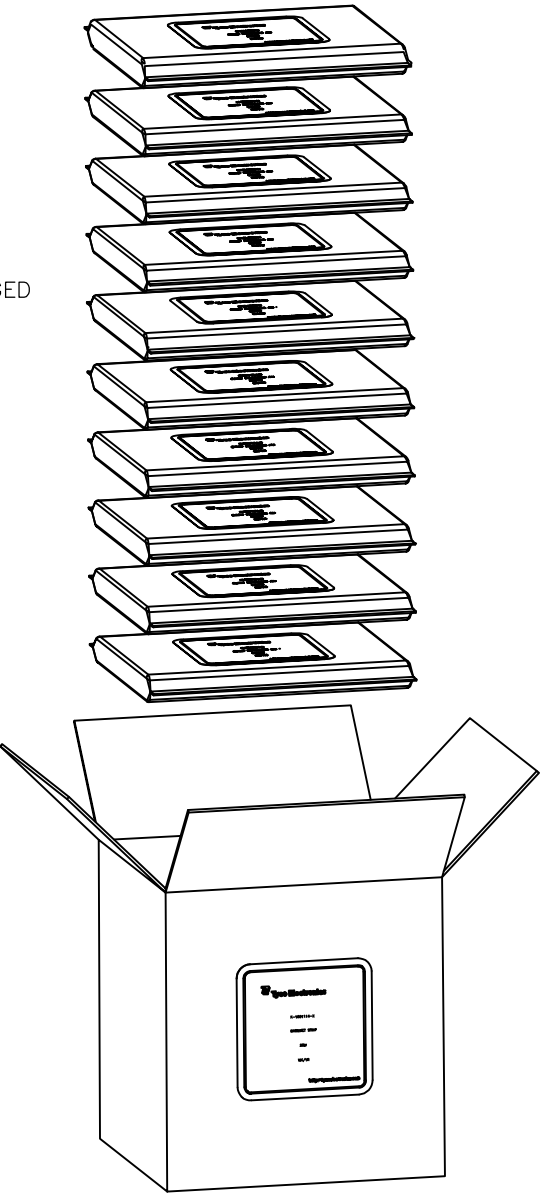
NOTE
25M COIL PACKAGED IN A 200 GAUGE POLY BAG



3 BULK PACKAGING DETAILS

NOTE
SIZE 2 IS 20 X 25M COILS PACKAGED
IN A 500mm x 250mm x 200mm BOX

SIZE 3 AND 4 IS 10 X 25M COILS PACKAGED
IN A 500mm x 250mm x 200mm BOX



4	3100g	2.3–2.05	1.4–0.9	1.25–0.75	3.55–2.85	3.6–3.35	4	250m GROMMET STRIP, SIZE 4	–	3–1991136–1
4	2400g	1.4–1.15	1.25–0.75	1.25–0.75	3.15–2.45	2.45–2.05	4	250m GROMMET STRIP, SIZE 3	–	2–1991136–1
4	3600g	1.0–0.8	1.15–0.65	1.15–0.65	2.7–2.0	1.55–1.15	3	500m GROMMET STRIP, SIZE 2	–	1–1991136–1
	310g	2.3–2.05	1.4–0.9	1.25–0.75	3.55–2.85	3.6–3.35	4	25m GROMMET STRIP, SIZE 4	0496	3–1991136–0
	240g	1.4–1.15	1.25–0.75	1.25–0.75	3.15–2.45	2.45–2.05	4	25m GROMMET STRIP, SIZE 3	0495	2–1991136–0
	180g	1.0–0.8	1.15–0.65	1.15–0.65	2.7–2.0	1.55–1.15	4	25m GROMMET STRIP, SIZE 2	0494	1–1991136–0
WEIGHT/COIL (MEAN)		E	D	C	B	A	PACKAGING OPTION	DESCRIPTION	SPECIAL SALES PART No	PART No.

THIS DRAWING IS A CONTROLLED DOCUMENT.

DIMENSIONS:MM

MATERIAL

–

TOLERANCES UNLESS OTHERWISE SPECIFIED:

0 PLC ± –
1 PLC ± –
2 PLC ± –
3 PLC ± –
4 PLC ± –
ANGLES ± –
FINISH –

THIS DRAWING IS A CONTROLLED DOCUMENT.

DWN A.Morey 17OCT07
CHK S.Parlow 18OCT07
APVD F.Wheeler–King 18OCT07
PRODUCT SPEC
APPLICATION SPEC
WEIGHT –

Tyco Electronics

Tyco Electronics Corporation
Bideford, UK, EX39 4HE

NAME

–
GROMMET STRIP
–

SIZE

CAGE CODE

DRAWING NO

RESTRICTED TO

A300779

C=1991136

–

CUSTOMER DRAWING

SCALE 10:1

SHEET 1 OF 1

REV A

Mouser Electronics

Authorized Distributor

Click to View Pricing, Inventory, Delivery & Lifecycle Information:

[TE Connectivity:](#)

[2-1991136-0](#)