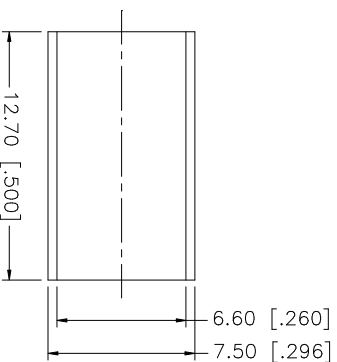
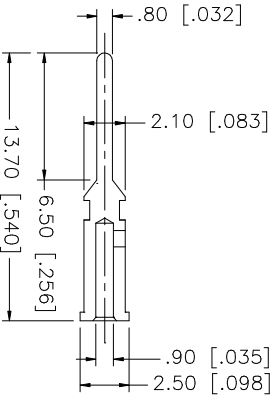
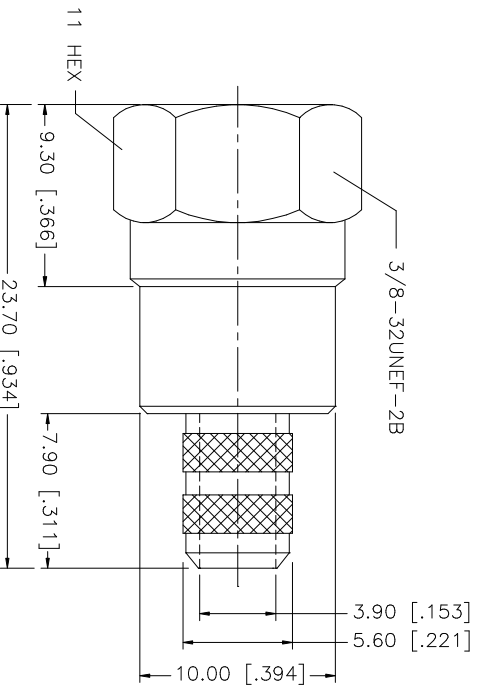
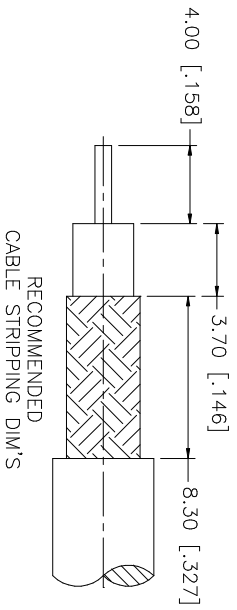


REV.	DATE	DESCRIPTION
A	03/06/03	UPDATE DRAWING FORMAT



- NOTE:
1. CRIMPED FERRULE
HEX CRIMP SIZE ".255"
 2. CRIMPED CONTACT PIN
HEX CRIMP SIZE ".068"

QTY	FINISH	MATERIAL	DESCRIPTION
1	NICKEL	BRASS	FERRULE
1	NICKEL	BRASS	BARREL
1	GOLD	BRASS	CONTACT PIN
1	NATURAL	DELRIN	INSULATOR
1	NICKEL	BRASS	SHELL/BODY

APPROVALS	DATE
DRAWN G.R.S.	03/06/03
CHECKED	
ISSUED	
SHEET 1 OF 1	

UNLESS OTHERWISE SPECIFIED DIMENSIONS ARE IN MILLIMETERS. DIMENSIONS IN [] ARE IN INCHES AND FOR CUSTOMER REFERENCE ONLY. TOLERANCES FOR MILLIMETERS ARE:	UNLESS OTHERWISE SPECIFIED DIMENSIONS ARE IN MILLIMETERS. DIMENSIONS IN [] ARE IN INCHES AND FOR CUSTOMER REFERENCE ONLY. TOLERANCES FOR INCHES ARE:
0.5 - 8mm ± 0.20mm	.020 - .315 ± ± 0.007"
8 - 30mm ± 0.40mm	.315 - 1.180 ± ± 0.015"
30 - 120mm ± 0.50mm	1.180 - 4.724 ± ± 0.020"

CAD FILE	DWG. NO.	REV.	SIZE	SCALE
C:/222/222119.DWG	222119.DWG	A	A	NA

PART DESCRIPTION	PART NO.
F CRIMP PLUG (FOR RG-59/U 20AWG - BELDEN 9100)	222119

Amphenol **Connex**

Mouser Electronics

Authorized Distributor

Click to View Pricing, Inventory, Delivery & Lifecycle Information:

[Amphenol:](#)

[222119](#)