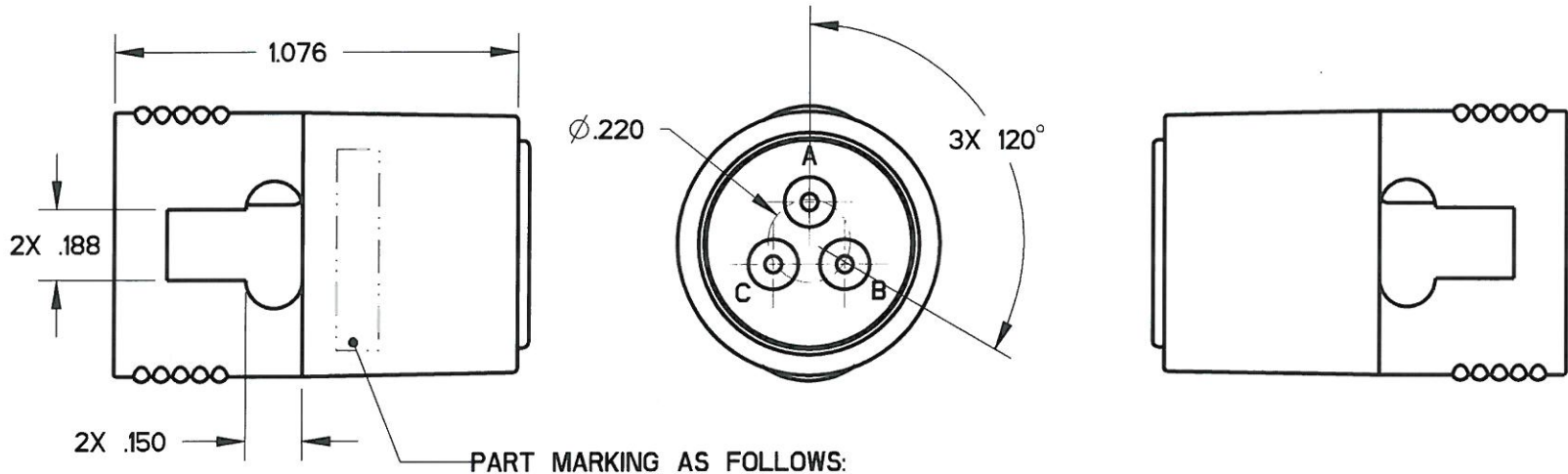
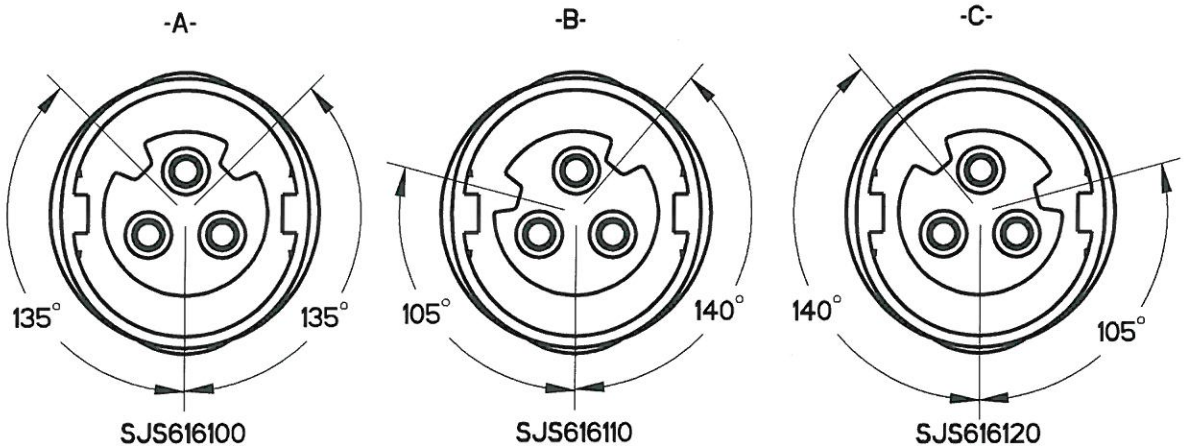
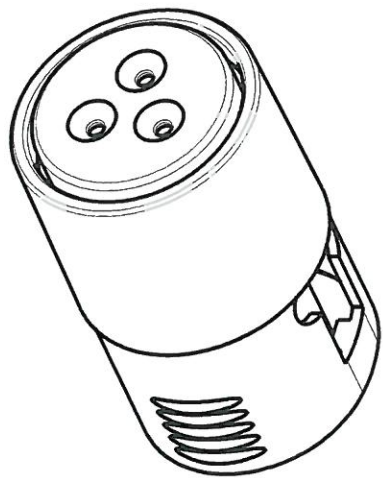
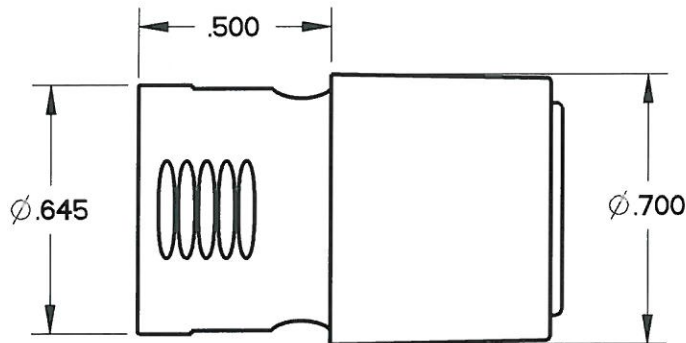


NOTES:

1. MATERIALS:
HOUSING: PA 6/6
CONTACT RETAINER: STAINLESS STEEL
GROMMET: SILICONE RUBBER PER A-A-59588
2. OPERATING RANGE:
TEMPERATURE: -55 °C TO 95 °C
INSULATION RESISTANCE: 5000 MEGOHMS MINIMUM
DIELECTRIC WITHSTANDING VOLTAGE: 1500 VRMS SEA LEVEL
600 VRMS @ 45,000 FT. ALTITUDE
- CURRENT RATING: 13 AMPS
VIBRATION: PER EIA-364D METHOD 28, TEST CONDITION V.
3. ACCEPTS (3) M39029/56-352 SOCKET CONTACTS (NOT INCLUDED)
4. CONTACT RETENTION - 20 LBS EACH

| REV | ECN | APP'D |
|-----|------|------------|
| - | 5663 | J. TON |
| A | 5706 | J. TON |
| B | 5796 | J. TON |
| C | 5951 | JT 9/26/06 |
| D | 6589 | 8/70/12/2 |





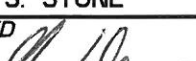

BACC63DE0316SX APCD
YYWW SJS6161XX

SEE TABLE 1 FOR FULL PART NUMBERS

DATE
CODE

KEY CONFIGURATION SEE TABLE 1

| TABLE 1 - PART NUMBER SCHEME | | | |
|------------------------------|----------------|-----|-------|
| APCD PART# | BACC PART# | KEY | COLOR |
| SJS616100 | BACC63DE0316SA | A | RED |
| SJS616110 | BACC63DE0316SB | B | WHITE |
| SJS616120 | BACC63DE0316SC | C | BLUE |

| | | | | | | | | | | | | |
|---|--|---|--|---|--|--|-----------|------------|--|--------------|-----|--|
| DIMENSIONS | | TOLERANCES | | PROJECTION | | TITLE | | | | | | |
| ANSI Y14.5M | | .XX ±0.01 | |  | | IN-LINE JUNCTION TRIPLE WIRE, SIZE 16 PLUG | | | | | | |
| UNITS: INCHES | | .XXX ±0.005 | | | | | | | | | | |
| Pro/E FILE | | ANGLES ±1.0° | | | | | | | | | | |
| <div>ORIGINAL</div>  | | THIS DOCUMENT CONTAINS PROPRIETARY INFORMATION WHICH IS THE CONFIDENTIAL PROPERTY OF AMPHENOL PCD, BEVERLY, MA | | CHKD | | S. STONE 10/19/05 | | | | | | |
| | | | |  | | 10/12/10 | | | | | | |
| | | | | APPD | | | | | | | | |
| | | | |  | | | | | | | | |
| | | | | | | SIZE | DWG NO. | | | | REV | |
| | | | | | | B | SJS616100 | | | | D | |
| | | | | | | CODE: 58982 | | SCALE: 2:1 | | SHEET 1 OF 1 | | |

Mouser Electronics

Authorized Distributor

Click to View Pricing, Inventory, Delivery & Lifecycle Information:

[Amphenol:](#)

[SJS616100](#) [SJS616110](#)