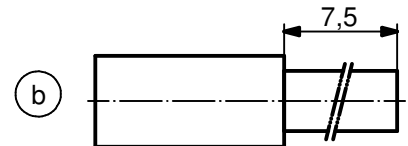


NOTES:

1. MATERIAL: COPPER ALLOY
2. PLATING:
ITEM 1: 30µin HARD GOLD OVER min. 50µin NICKEL
ITEM 2: GOLD FLASH over NICKEL
ITEM 3: NICKEL PLATED
3. CRIMPING: USE CRIMP TOOL 360X10409X
WITH TOOL INSERT 360X20029X
SELECTOR SETTINGS: 3 FOR AWG 16
2 FOR AWG 18
2 FOR AWG 20

STRIPPING DIMENSIONS



Directive 2002/95/EC RoHS compliant

THIS DRAWING MAY NOT BE COPIED OR REPRODUCED IN ANY WAY, AND MAY NOT BE PASSED ON TO A THIRD PARTY WITHOUT WRITTEN PERMISSION. OWNERSHIP AND COPYRIGHT OF CONEC GmbH

DO NOT ALTER CAD DRAWING BY HAND

| | | | | | | | | | | | |
|-------------------|-------------|------------|------|----------------------|----------|--------------|--|------------|------------|---------------------|--|
| finish: see notes | | | | tolerance ISO 2768-m | | dim. in mm | | scale: 5:1 | | material: see notes | |
| | | | | date | name | | title: HIGH POWER CONTACT FEMALE CRIMP VERSION 10A D-SUB COMBINATION | | | | |
| | | | | drawn | 23.03.98 | Barcinski | | | | | |
| | | | | appd. | 23.03.98 | Mickenbecker | | | | | |
| | | | | norm | | | | | | | |
| | | | | d-old | | | dwg no: | | DIN-A4 | | |
| 3 x b | Ä3854 | 19.01.2011 | K.H. | CONEC ® | | | 13K1IE7A | | sh: 1 | | |
| a | Origin | | | | | | | | | | |
| rev. | description | date | name | | | | part no: | | 132C11019X | | |



Mouser Electronics

Authorized Distributor

Click to View Pricing, Inventory, Delivery & Lifecycle Information:

[CONEC:](#)

[132C11019X](#)