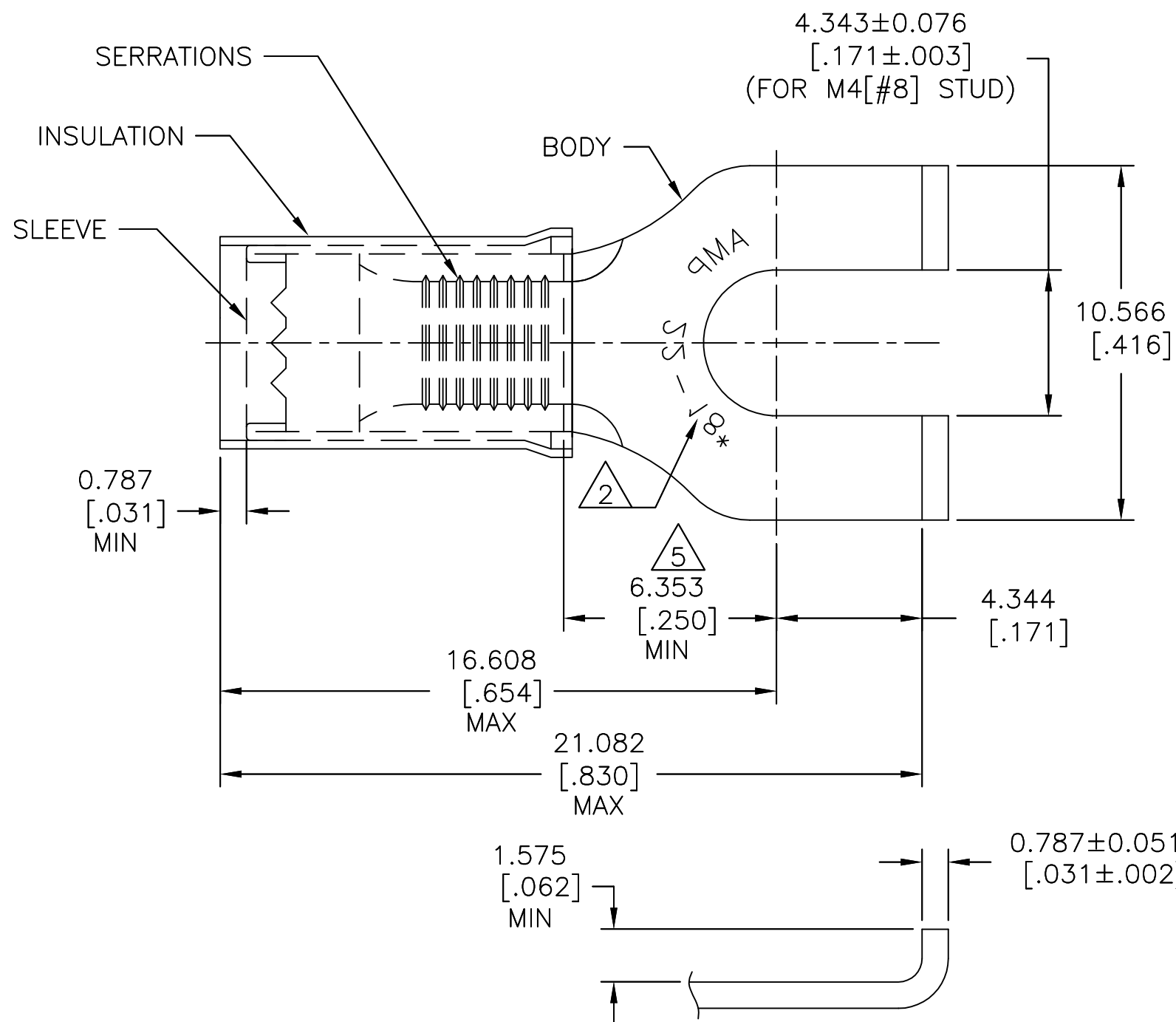


P	LTR	DESCRIPTION	DATE	DWN	APVD
	K1	REDRAWN PER ECO-17-007400	14DEC2017	RS	DR

<b>AMP</b> WIRE RANGE	Listed FILE E13288	LR7189 Certified
22-16 AWG SOLID OR STRANDED	22-16 AWG SOLID OR STRANDED	22-16 AWG SOLID OR STRANDED



- 1 WIRE INSULATION:  $\phi 2.667-3.556[\phi .105-.140]$
- 2 STAMP AMP 22-18\* APPROX AS SHOWN. 22-16 TERMINALS ARE STAMPED 22-18 IN ACCORDANCE WITH MILITARY SPEC SAE AS 7928 COMMERCIAL RANGE IS 22-16.
- 3 FINISH:  
BODY & SLEEVE: TIN PLATE PER ASTM B545.  
INSULATION: COLOR-RED.
- 4 MATERIAL:  
BODY & SLEEVE: COPPER PER ASTM B152.  
INSULATION : NYLON
- 5 APPLIES FROM EDGE OF METAL WIRE BARREL TO CENTER OF STUD HOLE.

5000	ON TAPE, REEL	2-32498-1
1000	LOOSE PIECE	32498
QTY	PACKAGE TYPE	PART NO

AMP INCORPORATED  
CUSTOMER SERVICE SYSTEMS

MAX RECOMMENDED OPERATING  
TEMPERATURE:  
105°C [221°F]

VOLTAGE RATING:  
300 V MAX

CIRCULAR MIL AREA:  
0.26-1.65mm<sup>2</sup> [509-3,260]  
SOLID OR STRANDED

FOR ADDITIONAL  
PRODUCT INFORMATION OR  
COPIES OF DRAWINGS  
AND TECHNICAL DOCUMENTS

PRODUCT INFORMATION CENTER  
1-800-522-6752

FOR APPLICATION  
TOOLING INFORMATION

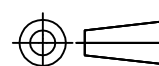
TOOLING ASSISTANCE CENTER  
1-800-722-1111

FOR ORDER ENTRY

1-800-526-5142

THIS DRAWING IS A CONTROLLED DOCUMENT.

DIMENSIONS:  
mm [INCHES]



MATERIAL

TOLERANCES UNLESS  
OTHERWISE SPECIFIED:

- 0 PLC ± -
- 1 PLC ± -
- 2 PLC ± -
- 3 PLC ± 0.127[.005]
- 4 PLC ± -
- ANGLES ± 5°
- FINISH

DWN RAVI S 14DEC2017

CHK ROHDE DANIEL F 14DEC2017

APVD ROHDE DANIEL F 14DEC2017

PRODUCT SPEC

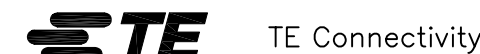
UL 486 A-B

APPLICATION SPEC

114-2157

WEIGHT -

CUSTOMER DRAWING



NAME  
WIRE TERMINAL,  
P.I.D.G, FLANGED SPADE,  
WIRE SIZE: 22-16 AWG

SIZE	CAGE CODE	DRAWING NO	RESTRICTED TO
A3	00779	C=32498	-

SCALE 1:1 SHEET 1 OF 1 REV K1

# Mouser Electronics

Authorized Distributor

Click to View Pricing, Inventory, Delivery & Lifecycle Information:

[TE Connectivity:](#)

[32498](#)