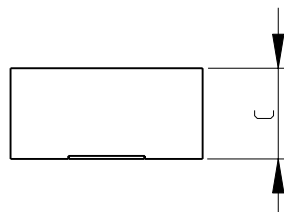
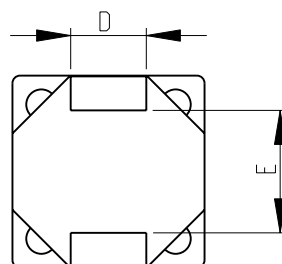
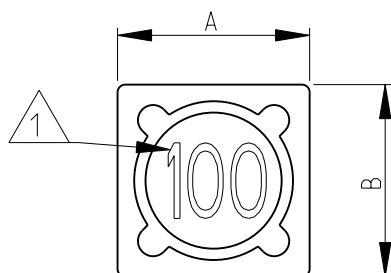


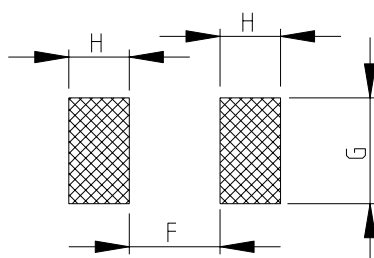
LOC	DIST	REVISIONS					
E	B	P	LTR	DESCRIPTION	DATE	DWN	APVD
			BC 1	REVISED PER ECO-11-005150	28MAR2011	RK	HMR



1 INDUCTANCE CODE

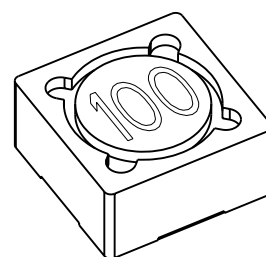
2 FOR FURTHER INFORMATION SEE DATA SHEET FOR 3631 SERIES-SHIELDED SMD POWER INDUCTORS

RECOMMENDED LAND PATTERN FOR 3631B, 3631C SERIES

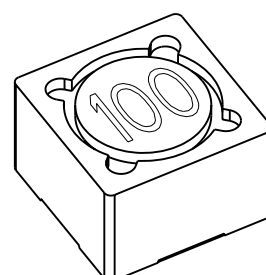


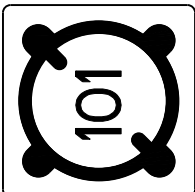
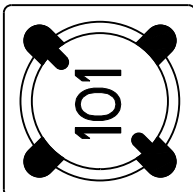
RoHS Compliant

SERIES 3631B AS SHOWN



SERIES 3631C AS SHOWN



DESCRIPTION AND DETAIL OF CHANGE	EPOXY METHOD CHANGED	
	BEFORE CHANGE	AFTER CHANGE
	EPOXY ALL AROUND TERMINALS ( MARKED BLACK AREA )	EPOXY ON FOUR SPOTS ( MARKED BLACK AREA )
		
	3631B-3631C SERIES	3631B-3631C SERIES

3631C	12.7	12.7	8.0	5.0	8.1	6.0	7.0	4.0
3631B	12.7	12.7	6.0	5.0	8.1	6.0	7.0	4.0
SERIES	A±0.3	B±0.3	C±0.5	D±0.2	E (typ)	F (ref)	G (ref)	H (ref)

2008

RELEASED FOR PUBLICATION

THIS DRAWING IS UNPUBLISHED.

ALL RIGHTS RESERVED.

BY -

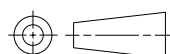
© COPYRIGHT 2008

DIMENSIONS:

mm

TOLERANCES UNLESS  
OTHERWISE SPECIFIED:

0 PLC	±0.5
1 PLC	±0.2
2 PLC	±0.1
3 PLC	±
4 PLC	±
ANGLES	±5°



DWN SUBHASH.M 02-Sep-08

CHK PRAKASH.S 02-Sep-08

APVD STEPHEN.P 02-Sep-08

PRODUCT SPEC

APPLICATION SPEC

WEIGHT -

MATERIAL

FINISH



TE Connectivity

NAME

SHIELDED SMD POWER INDUCTORS  
SERIES 3631

SIZE

CAGE CODE

DRAWING NO

RESTRICTED TO

A 4

00779

C-1625812

-

CUSTOMER DRAWING

SCALE 2:1

SHEET 1 OF 1

REV BC 1

# Mouser Electronics

Authorized Distributor

Click to View Pricing, Inventory, Delivery & Lifecycle Information:

[TE Connectivity:](#)

[3631B221LL](#)