

TYPICAL INDICATOR ORDERING EXAMPLE

**KB**      **02**      **K**      **W01**      —      **12**      —      **FF**

**Shapes**

Bushing Mounting	
01	Square
02	Round
03	Rectangular
Snap-in Mounting	
04	Square
05	Round
06	Rectangular

Housing	
K	Black only

Terminals	
W01	Silver Solder Lug

**Lamps**

Incandescent Lamp Used with Solid Cap	
05	5-volt
12	12-volt

Incandescent or Neon Lamp Used with Insert Cap	
05	5-volt
12	12-volt
01	110-volt Neon

Bright LED Used with Cap for LED			
Colors		Resistor	
5C	Red	No Code	No Resistor
5D	Amber	05	5-volt
		12	12-volt
5F	Green	24	24-volt

Super Bright LED Used with Cap for LED	
6B	White
6F	Green
6G	Blue

**Cap Types & Colors**

Solid Cap: Lens/Filter Colors			
BB	White/White	FB	Green/White
CB	Red/White	FF	Green/Green
CC	Red/Red	GB	Blue/White
EB	Yellow/White	GG	Blue/Blue

Insert Cap: Lens/Filter Colors	
JB	Clear/White
JC	Clear/Red
JE	Clear/Yellow
*JF	Clear/Green
*JG	Clear/Blue

\* JF & JG not suitable with neon.

LED Cap: Lens/Diffuser Colors	
AB	Square Spot Illuminated Black Cap/White Window
JB	Clear/White
JC	Clear/Red
JD	Clear/Amber
JF	Clear/Green

LED Cap: Lens/Diffuser Colors	
JB	Clear/White

DESCRIPTION FOR TYPICAL ORDERING EXAMPLE

**KB02KW01-12-FF**



12-volt Incandescent Lamp Solid Cap with Green Lens and Green Filter

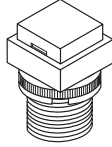
Black Housing Round with Bushing Mounting

Silver Solder Lug Terminals

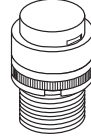
### SHAPES & MOUNTING TYPES

#### Bushing Mounting

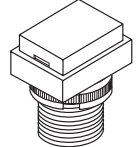
**01** .551" (14mm)  
Square



**02** .551" (14mm)  
Round

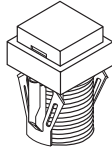


**03** .551" x .728" (14mm x 18.5mm)  
Rectangular

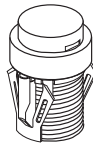


#### Snap-in Mounting

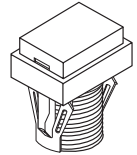
**04** .551" (14mm)  
Square



**05** .551" (14mm)  
Round



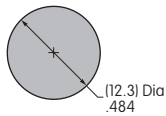
**06** .551" x .728" (14mm x 18.5mm)  
Rectangular



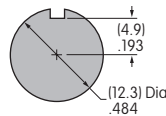
The bezel is an integral part of the indicator body.

#### Bushing Mounting

Without  
Keyway



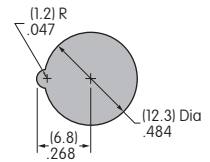
Panel Thickness:  
.020" ~ .315"  
(0.5 ~ 8mm)



With  
Keyway

#### Snap-in Mounting

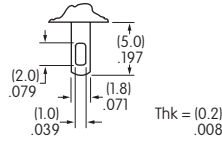
Panel Thickness:  
.039" ~ .138"  
(1.0 ~ 3.5mm)



### TERMINALS

**W01**



Silver Solder Lug





### LAMP COLORS & SPECIFICATIONS

The electrical specifications shown are determined at a basic temperature of 25°C.  
If the source voltage exceeds the rated voltage, a ballast resistor is required.  
The ballast resistor calculation and more lamp detail are shown in the Supplement section.

#### Incandescent & Neon Lamps

AT611 Incandescent	AT615 Neon		<b>05</b>	<b>12</b>	<b>01</b>	Recommended Resistors for Neon: 33K ohms for 110V AC; 100K ohms for 220V AC	
		Voltage	V	5V AC	12V AC		110V AC
		Current	I	115mA	60mA		1.5mA
		Endurance	Hours	7,000 average			10,000


#### Bright LED without Resistor

AT635 LEDs are colored in OFF state.	Red	Amber	Green	<b>No Code</b> No Resistor			
	<b>5C</b>	<b>5D</b>	<b>5F</b>	Red	Amber	Green	
   T-1 1/2 Bi-pin	Color Codes						
	Maximum Forward Current	$I_{FM}$			30mA	30mA	30mA
	Typical Forward Current	$I_F$			20mA	20mA	20mA
	Forward Voltage	$V_F$			1.9V	2.0V	2.1V
	Maximum Reverse Voltage	$V_{RM}$			5V	5V	5V
	Current Reduction Rate Above 25°C	$\Delta I_F$			0.42mA/°C	0.29mA/°C	0.42mA/°C
Ambient Temperature Range				-25° ~ +50°C			

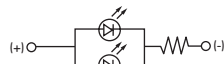
**LAMP COLORS & SPECIFICATIONS**

The electrical specifications shown are determined at a basic temperature of 25°C.  
 If the source voltage exceeds the rated voltage, a ballast resistor is required.  
 The ballast resistor calculation and more lamp detail are shown in the Supplement section.

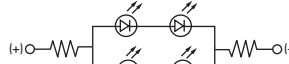
**Bright LED with Resistor**

<b>AT634</b>  LEDs are colored in OFF state.    T-1 1/4 Bi-pin	Color Codes:	Red <b>5C</b>	Amber <b>5D</b>	Green <b>5F</b>	Resistor Codes			
					<b>05</b>	<b>12</b>	<b>24</b>	
	Maximum Forward Current				$I_{FM}$	—	—	—
	Typical Forward Current				$I_F$	25mA	20mA	10mA
	Forward Voltage				$V_F$	5V	12V	24V
	Maximum Reverse Voltage				$V_{RM}$	4V	8V	16V
	Current Reduction Rate Above 25°C				$\Delta I_F$	—	—	—
Ambient Temperature Range					-25° ~ +50°C			

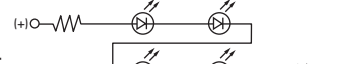
AT634  
5-volt  
2-element  
with 1 Resistor





AT634  
12-volt  
4-element  
with 2 Resistors



AT634  
24-volt  
4-element  
with 2 Resistors



**Super Bright Single Element LED**

<b>AT625G Blue</b>  <b>AT631B White</b>  <b>AT632F Green</b>    T-1 Bi-pin				<b>6B</b>	<b>6F</b>	<b>6G</b>	
	Color	White	Green	Blue			
	Maximum Forward Current	$I_{FM}$	30mA	30mA	30mA		
	Typical Forward Current	$I_F$	20mA	20mA	20mA		
	Forward Voltage	$V_F$	3.3V	3.3V	3.3V		
	Maximum Reverse Voltage	$V_{RM}$	7V	7V	7V		
	Current Reduction Rate Above 25°C	$\Delta I_F$	0.40mA/°C	0.40mA/°C	0.40mA/°C		
Ambient Temperature Range					-25° ~ +50°C		

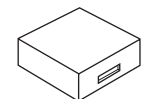
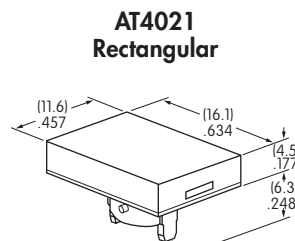
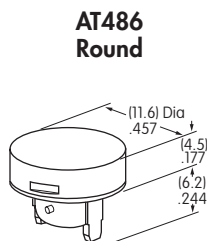
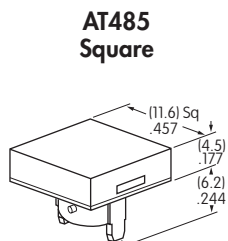
**CAP TYPES & COLOR COMBINATIONS**

Color Codes:    **B** White    **C** Red    **E** Yellow    **F** Green    **G** Blue    **J** Clear

**Solid Cap for Incandescent Lamp**

Lens/Filter Colors Available:

- BB**
- FB**
- CB**
- FF**
- CC**
- GB**
- EB**
- GG**



Translucent Colored Lens



Translucent Colored Filter



Lamp AT611

Material: Polycarbonate    Finish: Glossy

Toggles  
 Rockers  
 Pushbuttons  
 Illuminated PB  
 Programmable  
 Keylocks  
 Rotaries  
 Slides  
 Tactiles  
 Tilt  
 Touch  
 Accessories  
 Supplement

### CAP TYPES & COLOR COMBINATIONS

**Color Codes:** A Black    B White    C Red    D Amber    E Yellow    F Green    G Blue    J Clear

#### Insert Cap for Incandescent or Neon Lamp

Lens/Filter Colors Available:

**JB**

**AT487**  
Square

**AT488**  
Round

**AT4022**  
Rectangular



Transparent Clear Lens

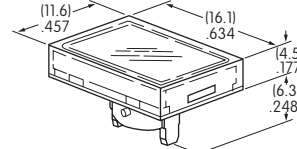
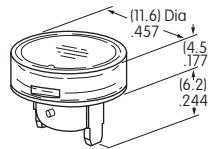
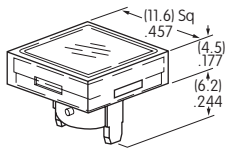
**JC**

**JE**



Translucent Colored Filter

**JF**



**JG**



Lamp AT611    Lamp AT615

JF and JG not suitable with neon lamp.

Material: Polycarbonate    Finish: Glossy

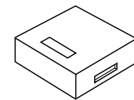
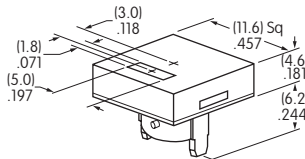
#### Spot Illuminated Cap for Bright LED without Resistor or with Resistor

Cap/Window Colors Available:

**AB**

Opaque Black Cap with Translucent White Window for Spot Illumination

**AT4051**  
Square



Bright LED AT635

Bright LED AT634

Material: Polycarbonate    Finish: Matte

#### Cap for Bright LED without Resistor or LED with Resistor

Lens/Diffuser Colors Available: (AT4133, 4132, 4134 white diffusers; AT4158, 4160, 4159 colored diffusers)

**JB**

**AT4133**

**AT4132**

**AT4134**



Transparent Clear Lens

Square

Round

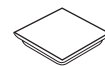
Rectangular

**JC**

**AT4158**

**AT4160**

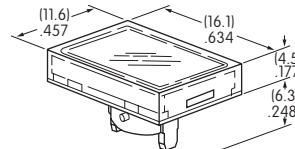
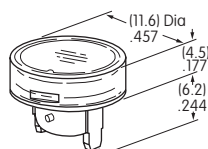
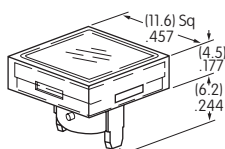
**AT4159**



Translucent Diffuser

**JD**

**JF**



Bright LED AT635

Bright LED AT634

Material: Polycarbonate    Finish: Glossy

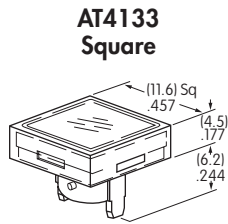
**CAP TYPES & COLOR COMBINATIONS**

Cap for Super Bright LED

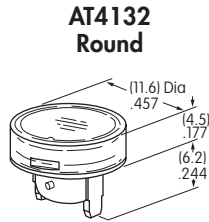
Lens/Diffuser  
Colors Available:



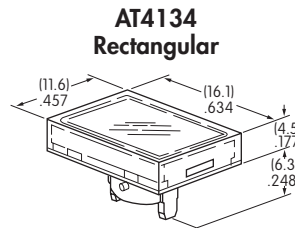
Clear Lens  
White Diffuser



**AT4133 Square**



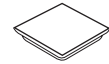
**AT4132 Round**



**AT4134 Rectangular**



Translucent Clear Lens



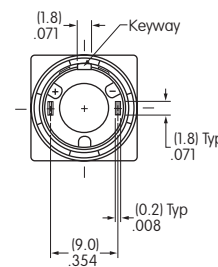
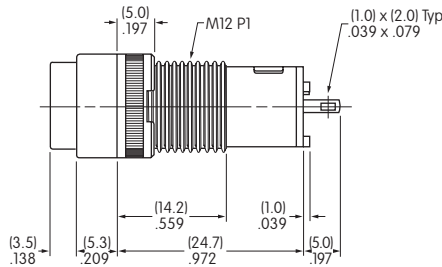
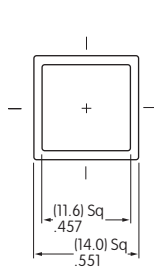
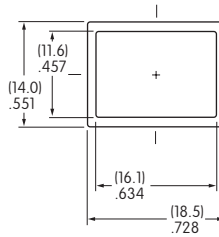
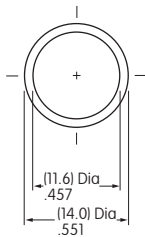
Translucent White Diffuser



Super Bright LEDs  
AT625, AT631, AT632

Material: Polycarbonate Finish: Glossy

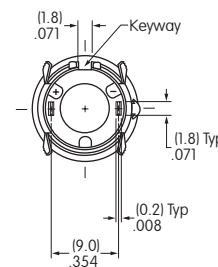
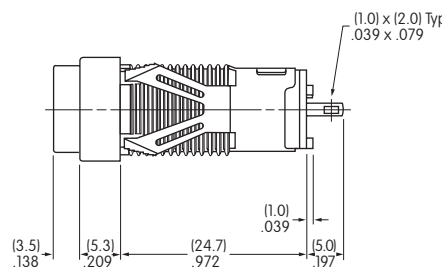
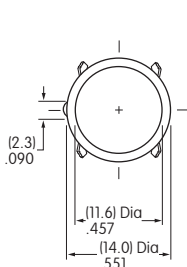
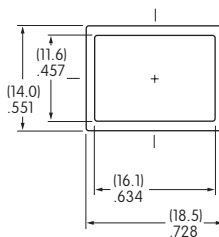
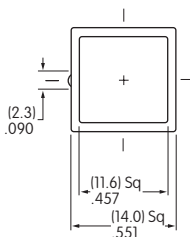
**TYPICAL INDICATOR DIMENSIONS**



**Bushing Mount**



**KB01KW01-05-GG**



**Snap-in Mount**



**KB05KW01-05-FF**

# Mouser Electronics

Authorized Distributor

Click to View Pricing, Inventory, Delivery & Lifecycle Information:

## NKK Switches:

[KB01KW01-5C-JC](#) [KB01KW01-6B-JB](#) [KB02KW01-5F24-JF](#) [KB02KW01-5C24-JC](#) [KB02KW01-5D24-JD](#)  
[KB02KW01-5F05-JF](#) [KB03KW01-6B-JB](#) [KB02KW01-5F-JB](#) [KB01KW01-5D12-JD](#) [KB03KW01-12-CC](#) [KB03KW01-5C12-JC](#) [KB03KW01-5D-JB](#) [KB03KW01-5C24-JC](#) [KB02KW01-6B-CC](#) [KB02KW01-6B-FF](#) [KB02KW01-6B-GG](#)  
[KB02KW01-28-FF](#) [KB01KW01-12-JC](#) [KB01KW01-12-JF](#) [KB01KW01-28-JC](#) [KB01KW01-28-JE](#) [KB01KW01-28-JF](#)  
[KB01KW01-6G-JB](#) [KB02KW01-6G-JB](#) [KB03KW01-6G-JB](#) [KB05KW01-6B-JB](#) [KB05KW01-6F-JB](#) [KB01KW01-5C05-JC](#)  
[KB01KW01-5D05-JD](#) [KB02KW01-6B-JB](#) [KB01KW01-12-JE](#) [KB01KW01-12-CC](#) [KB02KW01-12-FF](#) [KB02KW01-28-FB](#) [KB02KW01-5D12-JB](#) [KB06KW01-05-JC](#) [KB03KW01-12-EB](#) [KB03KW01-5C-JB](#) [KB01KW01-5D-JB](#)  
[KB01KW01-5F-JF](#) [KB02KW01-5D24-JF](#) [KB02KW01-12-JF](#) [KB01KW01-5F24-JF](#) [KB03KW01-5C-JC](#) [KB01KW01-5F12-JF](#) [KB02KW01-05-CC](#) [KB02KW01-28-BB](#) [KB06KW01-12-JB](#) [KB01KW01-12-JB](#) [KB02KW01-5F-JF](#)  
[KB02KW01-05-JC](#) [KB05KW01-01-JC](#) [KB05KW01-05-GG](#) [KB02KW01-28-JG](#) [KB01KW01-12-CB](#) [KB02KW01-01-JE](#)  
[KB01KW01-5D24-JD](#) [KB03KW01-28-BB](#) [KB01KW01-5C24-JC](#) [KB01KW01-5C12-JB](#) [KB03KW01-5D-JD](#) [KB02KW01-12-CC](#) [KB02KW01-01-JB](#) [KB02KW01-5F12-JB](#) [KB04KW01-5D05-JB](#) [KB02KW01-12-GG](#) [KB02KW01-28-GG](#)  
[KB03KW01-5F24-JF](#) [KB01KW01-5D-JD](#) [KB02KW01-28-JE](#) [KB01KW01-01-JB](#) [KB01KW01-12-FB](#) [KB02KW01-12-CB](#)  
[KB02KW01-5C-JB](#) [KB02KW01-5C12-JB](#) [KB01KW01-5D12-JB](#) [KB01KW01-01-JC](#) [KB02KW01-01-JC](#) [KB02KW01-5D05-JD](#) [KB01KW01-5F-JB](#) [KB02KW01-5C05-JC](#) [KB02KW01-5C12-JC](#) [KB01KW01-05-EB](#) [KB02KW01-28-CB](#)  
[KB03KW01-12-JF](#) [KB01KW01-5C-JB](#) [KB02KW01-5D12-JD](#) [KB01KW01-01-AB](#) [KB01KW01-12-EB](#) [KB02KW01-5D-JD](#) [KB01KW01-12-FF](#) [KB02KW01-28-EB](#) [KB01KW01-12-BB](#) [KB02KW01-5F12-JF](#) [KB02KW01-5C-JC](#) [KB03KW01-5F-JF](#) [KB02KW01-05-FF](#) [KB02KW01-5D-JB](#) [KB02KW01-28-JC](#)